

OCE-2 Expandable Formulate Display Case

OCE-2

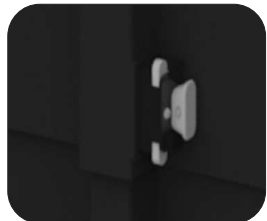
This adjustable roto-molded expandable display case is the perfect protective shipping and/or storage case for all Formulate™ exhibit kits, hanging structures and many more display products. With an adjustable lid and heavy-duty latch, you can adjust the height from 41.25" in increments to 65.5". Built-in wheels and a sturdy handle make the case portable and easy to transport.



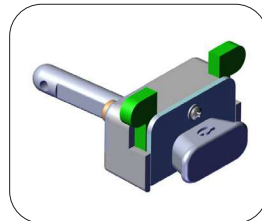
Case fits with Formulate tubes and graphics



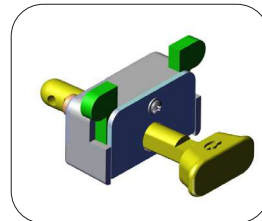
Handle and wheels



Close up of latch



To open: Pull up on lock (green)



Step 2: Pull out pin (yellow)

We are continually improving and modifying our product range and reserve the right to vary the specifications without prior notice. All dimensions and weights quoted are approximate and we accept no responsibility for variance. E&OE. See Graphic Templates for graphic bleed specifications.

features and benefits:

- Roto-molded expandable display case
- Expands from 41.25" - 65.5" in height
- Heavy-duty lock ensures display material is secure during transport
- Improved locking mechanism, allowing for easier telescopic height adjustments
- Built-in wheels and handle
- Stretch graphic wrap allows easy conversion to a counter
- One year limited hardware warranty against manufacturer defects

dimensions:

Hardware

Interior:

14"w x 40.75 - 65"h x 13.375"d
356mm(w) x 1036 - 1651mm(h) x 340mm(d)

Exterior:

16.75"w x 41.25 - 65.5"h x 16.75"d
426mm(w) x 1048 - 1664mm(h) x 426mm(d)

Weight:

25 lbs / 12 kg

Shipping

Shipping dimensions (collapsed in box, case only; not expanded):

41"l x 18"h x 17"d
1042mm(l) x 458mm(h) x 432mm(d)

Shipping weight (empty):

28 lbs / 13 kg

Maximum shipping weight:

58 lbs / 27 kg

*Please note that larger case heights will increase shipping dimensional weight and in turn increase shipping cost.

