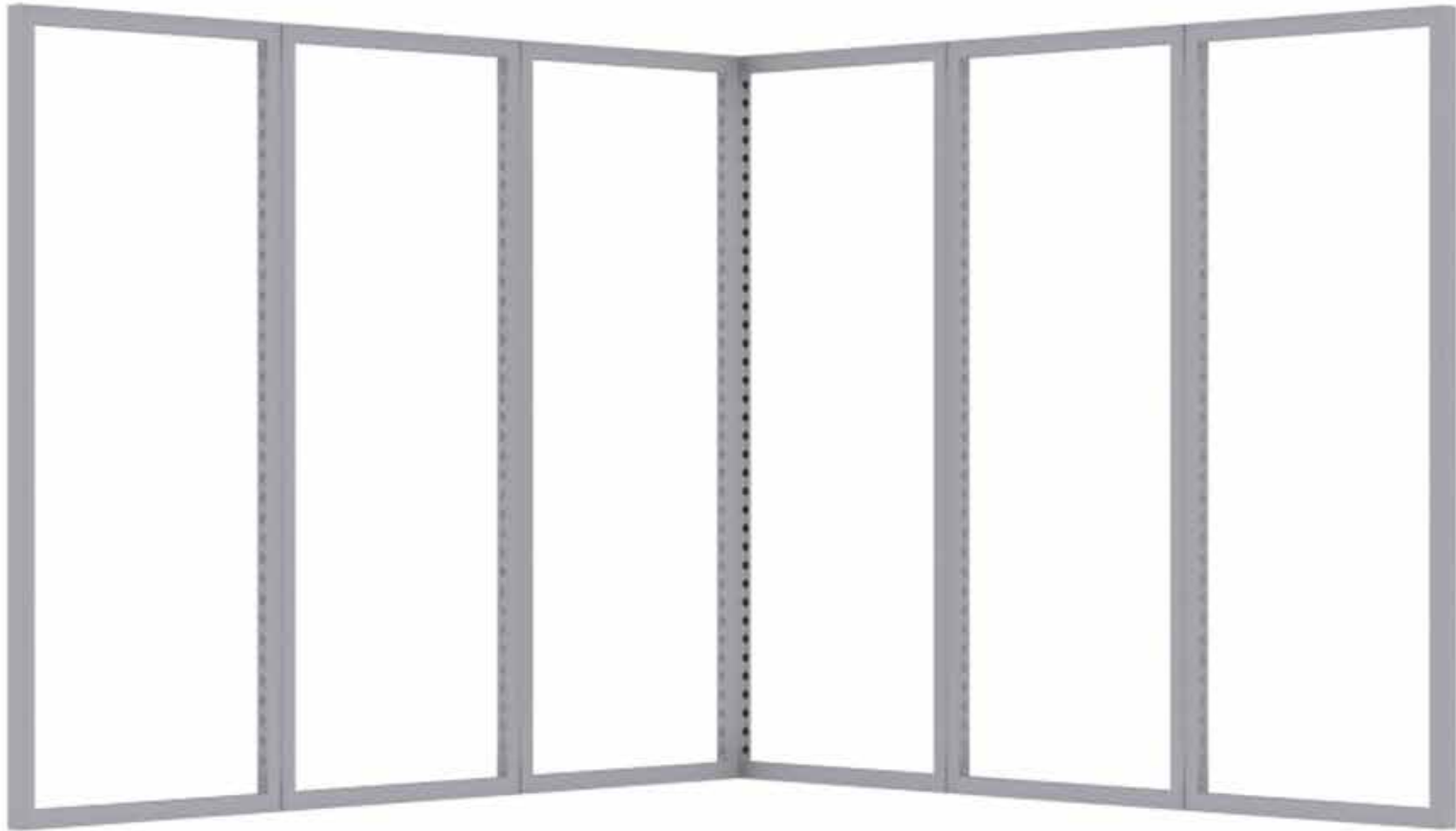
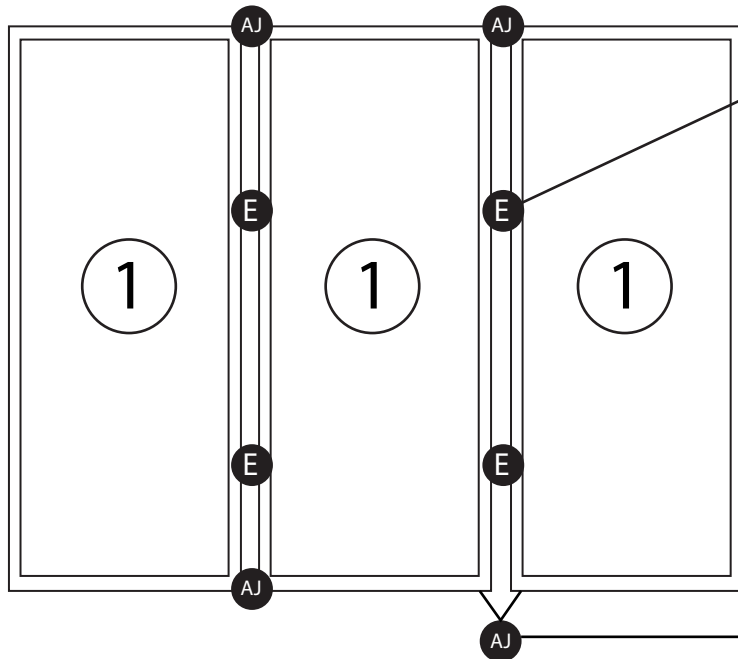


MODCO 13 - 10X10



MODCO 13 - 10X10

- Use PARTS LIST to reference parts. Repeat twice for two walls.



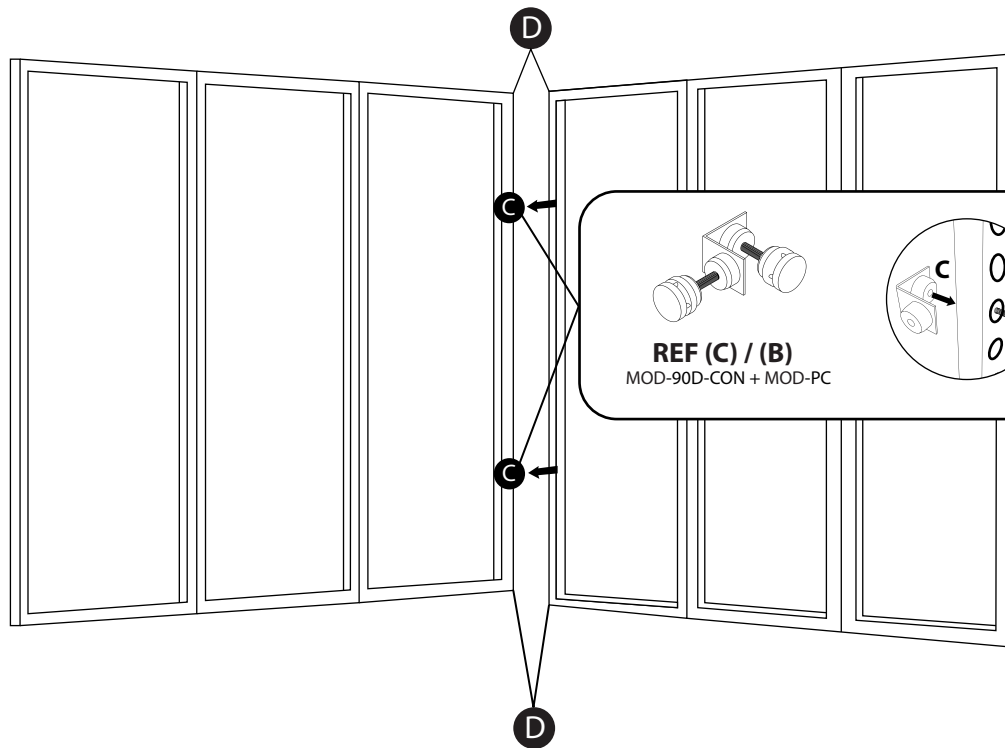
REF (E)
MOD-CLA-CON

REF (AJ) / (B)
MOD-180D-CON / MOD-PC

PARTS LIST			
REF	QTY	PART NO.	DESCRIPTION
1	6	MOD-FRM-992x2418	Straight Frame, Corner Screw Connect 992mm x 2418mm
B	24	MOD-PC	Pin Connector
C	2	MOD-90D-CON	90° Connector
D	2	MOD-SM90D-CON	90° Connector
E	8	MOD-CLA-CON	Clamp Connector
AJ	8	MOD-180D-CON	180 Degree Connector

MODCO 13 - 10X10

- Connect each wall to make a 90° corner.



REF (C) / (B)
MOD-90D-CON + MOD-PC

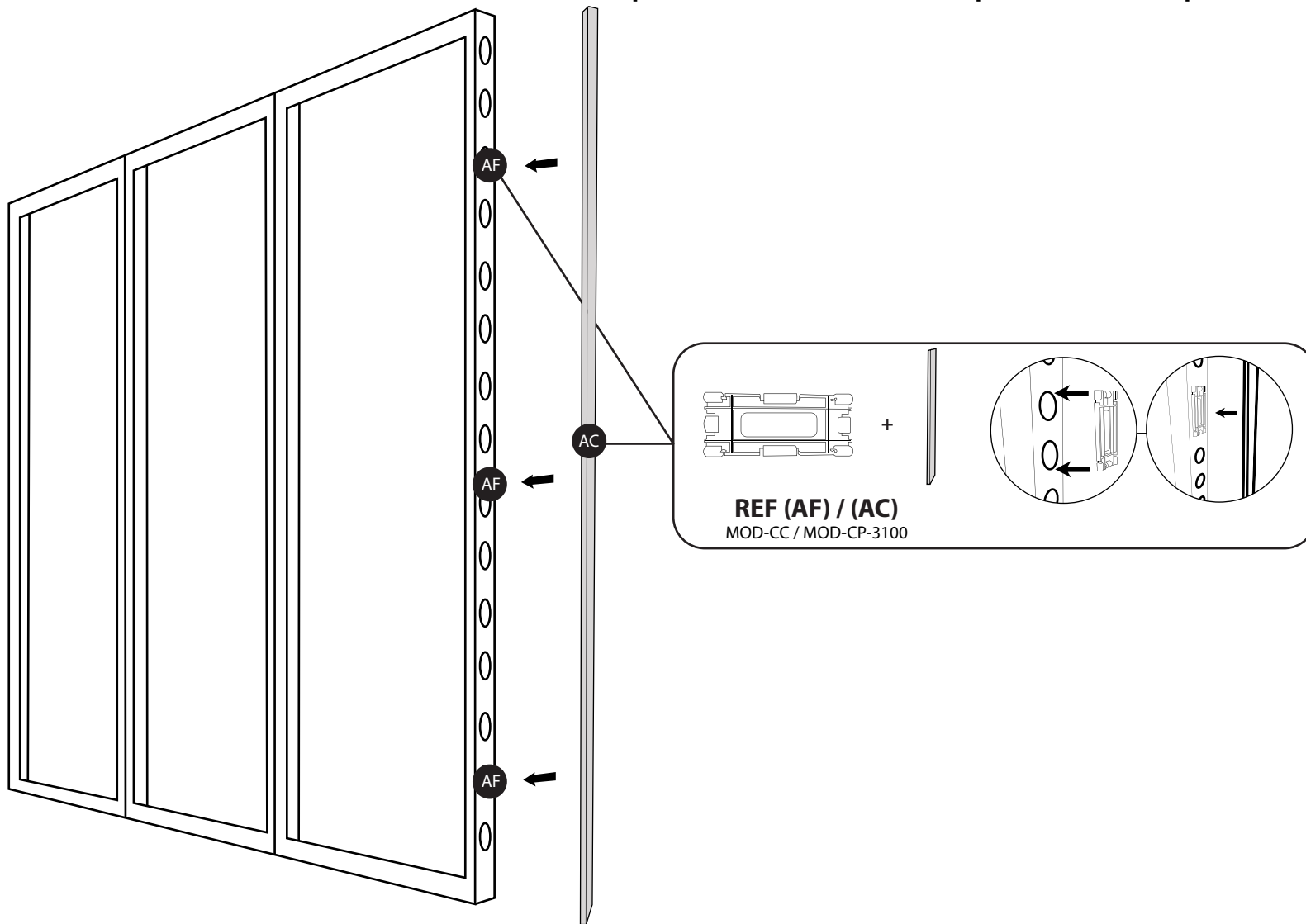
This inset diagram shows the assembly of a 90-degree corner between two vertical walls. It includes a 3D exploded view of the corner connector and two circular callouts showing the step-by-step installation of the connector into the wall profiles. A QR code is located to the right of the callouts.

REF (D) / (B)
MOD-SM90D-CON / MOD-PC

This inset diagram shows the assembly of a 90-degree corner between a vertical wall and a horizontal wall. It includes a 3D exploded view of the corner connector and two circular callouts showing the step-by-step installation of the connector into the wall profiles. A QR code is located to the right of the callouts.

MODCO 13 - 10X10

- Insert clip connector into holes (exposed side). Attach cover profile to each exposed side (3 sides total). Cover profile locks into clip connectors.



REF (AF) / (AC)
MOD-CC / MOD-CP-3100

COVER PROFILES & ACCESSORIES

REF	QTY	PART NO.	DESCRIPTION
AC	3	MOD-CP-992x2418	Cover Profile for Frame 992x2418. Flat Model. Anodized
AF	9	MOD-CC	Clip Connector Cover Connects Cover Profile

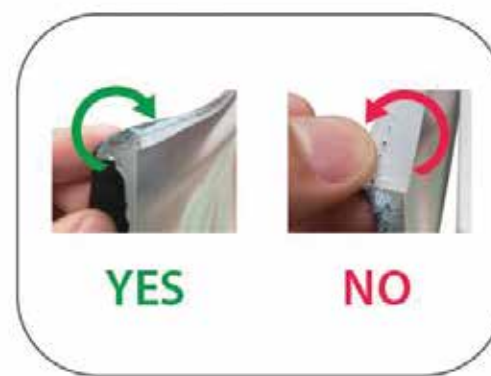
GRAPHIC INSTALL



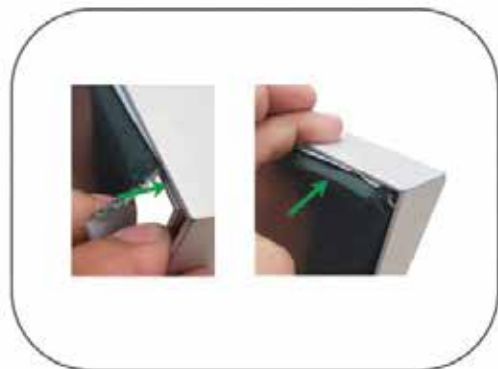
Place graphic over the front of the frame.



Begin inserting SEG beading at each corner.



Insert the silicone beading with the fabric folded over. The silicone beading should not be exposed.



Using your fingers, push both fabric and silicone beading completely into the extrusions channel.



Continue to push in the remaining silicone beading on each side.



Check the perimeter of the frame for any excess beading that hasn't been pushed in. Graphic should be taut.