

Hybrid Pro 20FT Modular Backwall Kit 31

HP-K-31

Hybrid Pro™ Modular Kit 31 is a dynamic modular exhibit that features an 8' tall backwall, six shelves for small product display with laminate soffit with puck lights and a central monitor mount that holds a large sized monitor. Push-fit SEG fabric graphics are easy to apply to the backwall and two Hybrid Pro Counters.



features and benefits:

- Silver aluminum extrusion frames (3)
- SEG push-fit fabric graphics (5)
- Shelf color options: Silver, Black, Mahogany, Natural
- Large monitor bracket holds 40-65" LCD*, max weight: 80 lbs
- Ships freight in a roto-molded protective shipping case
- Foreground counter and LCD monitor not included*
- Each shelf can hold 15lbs
- Lifetime hardware warranty against manufacturer defects

dimensions:

Hardware

Graphic

Assembled unit:
236.47" w x 95.45" h x 33.58" d
6006.34mm(w) x 2424.43mm(h) x
852.94mm(d)

Refer to related graphic template for more information.

Approximate weight:
525.83 lbs / 238.4 kg

Shipping

additional information:

Packing case(s):
SCRATE

Graphic material:
Dye-sublimation SEG push-fit fabric

Shipping dimensions:
57" l x 59" h x 34" d
1448mm(l) x 1499mm(h) x 864mm(d)

When included in a larger kit, a different packaging solution will be listed to accommodate all contents of the kit. Individual packaging no longer provided.

Approximate total shipping weight:
644.83 lbs / 292.49 kg

Tabletop Colors:



silver black mahogany natural

3 person assembly recommended:



Setup notes

1. Redesign of this exhibit without approval by manufacture may result in dangerous and unsafe structures. Manufacture disclaims any responsibility for redesigned exhibits it does not approve in writing.

2. Parts and components such as panels and extrusions are manufactured to metric sizing. Where ever possible sizes have been noted in feet and inches as well as in metric. Below is the imperial to metric sizing table as a reference. 'Nominal' refers to approximate sizes.

IMPERIAL TO METRIC SIZES

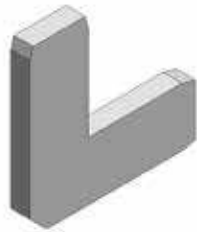
8' Nominal = 94 1/2" or 2400mm Actual
4' Nominal = 47 1/4" or 1200mm Actual
3' Nominal = 35 7/16" or 900mm Actual
2' Nominal = 23 5/8" or 600mm Actual
1' Nominal = 11 13/16" or 300mm Actual

Included In Your Kit

Tools, Components, & Connectors



HEX KEY SET x1



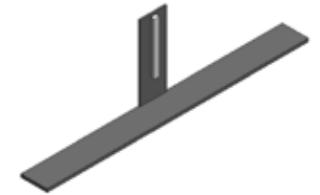
CB9 x20



IB2 x13



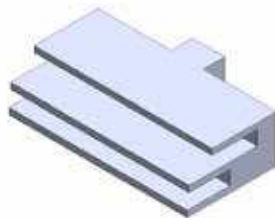
WOOD-SOFFET x4



SW-FOOT-500-LNx2



CUS-PHFC2-750-MCB9-MCB9x4



FC-50-SPACER x8



CUS-PHFC4-725-L1-MCB9 -x2



PHFC2-1000-L-MCB9-SIDE x4



PHFC2-1200-L-MCB9-SIDEx4



PHFC4-1200-L-MCB9x4



PHFC2-750-L-MCB9x4



CODEPH1-1155-L-L1x2



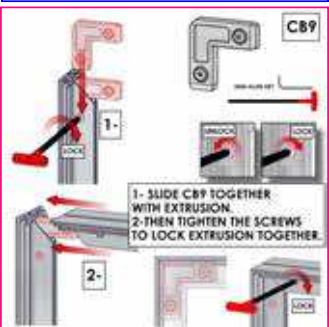
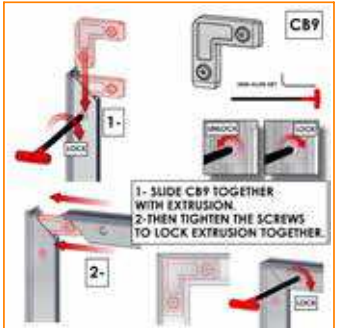
PH4-300-TGx2



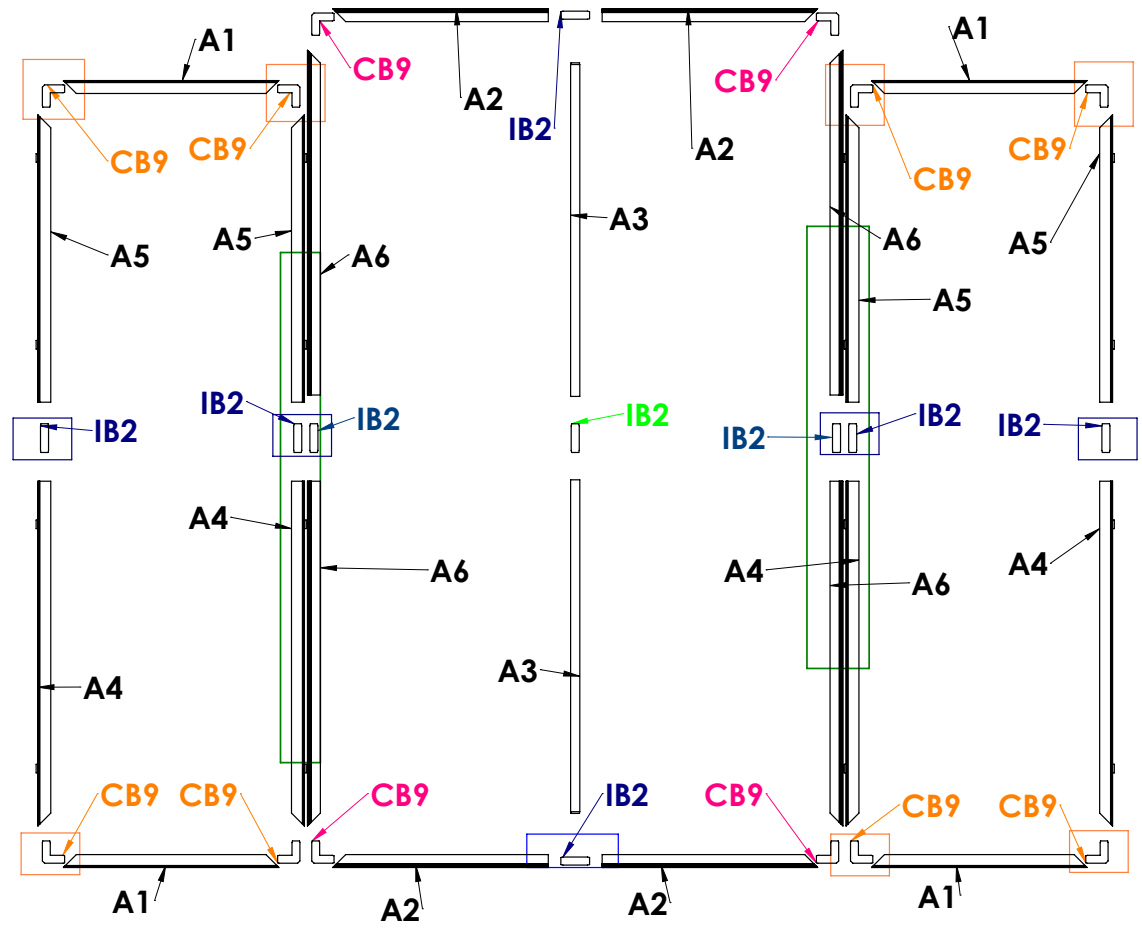
PM2S2-A165-Nx4

Code	#	Description
A4	4	PHFC2-1200 EXTRUSION-WITH IB2 LOCK HOLE-WITH MITRE CUT FOR CB9-SIDE LOCKS
CB9	12	90 DEGREE JOINER
A1	4	750MM CUT DOWN FROM 900MM LENGTH OF PHFC2 EXTRUSION-WITH MITRE CUT FOR CB9-WITH MITRE CUT FOR CB9
IB2	9	JOINER BAR(NEW DESIGN)
A5	4	PHFC2-1000 EXTRUSION-WITH MITRE CUT FOR CB9-WITH LOCK HOLE-SIDE LOCKS
A3	2	1155MM PH1 EXTRUSION-WITH IB2 LOCK HOLE-CAM LOCK
A6	4	PHFC4-1200 EXTRUSION-WITH IB2 LOCK HOLE-WITH MITRE CUT FOR CB9
A2	4	750MM CUT DOWN FROM 900MM LENGTH OF PHFC4 EXTRUSION-WITH IB2 LOCK HOLE-WITH MITRE CUT FOR CB9

CENTER VECTOR FRAME

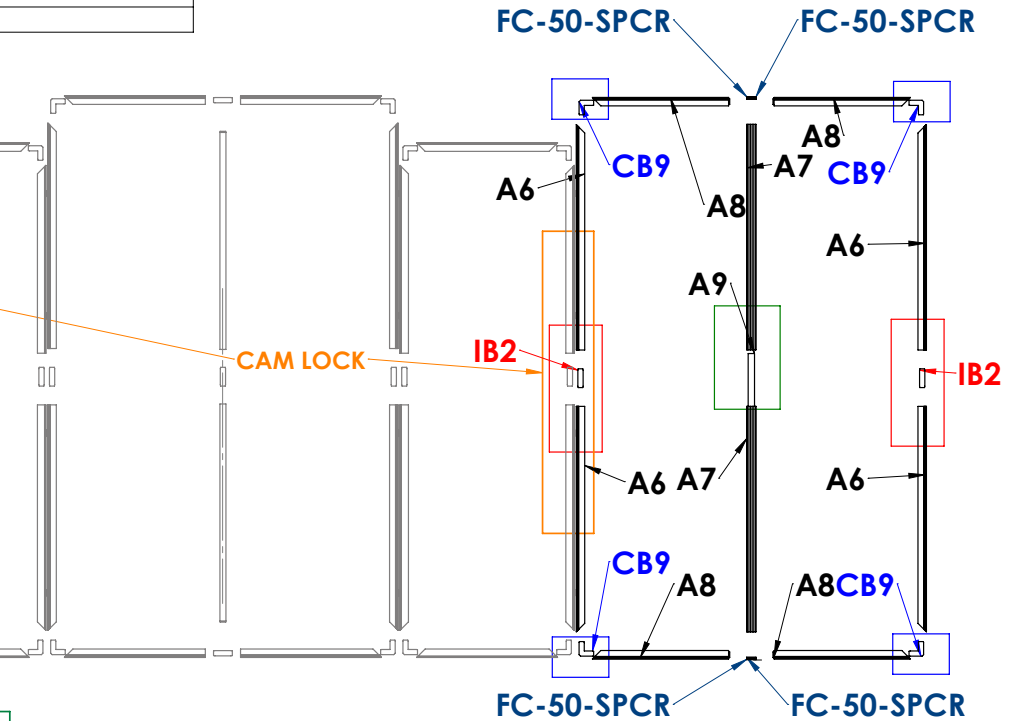
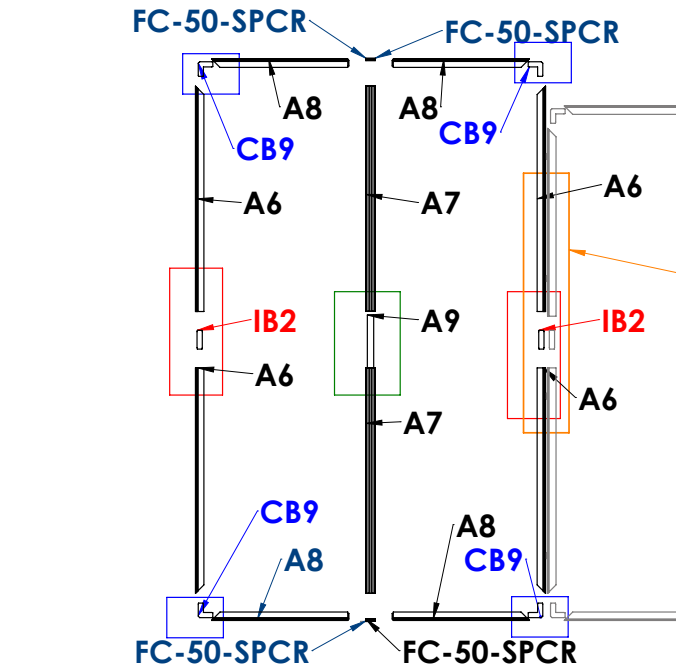
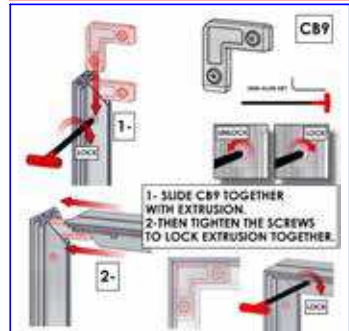


ASSEMBLY LAYING DOWN



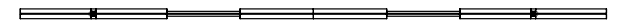
Code	#	Description
A8	8	725MM CUT DOWN FROM 900MM LENGTH OF PHFC4 EXTRUSION-WITH CAM LOCKS-WITH MITRE CUT FOR CB9
CB9	8	90 DEGREE JOINER
IB2	4	JOINER BAR(NEW DESIGN)
A6	8	PHFC4-1200 EXTRUSION-WITH IB2 LOCK HOLE-WITH MITRE CUT FOR CB9
FC-50-SPCR	8	FC-50-SPCR - FRAME CHANNEL SPACER IN ABS
A7	2	PM2S2-1200 EXTRUSION-WITH STOP AT 165MM-WITH NUT INSERT
A9	2	300MM PH4 EXTRUSION WITH TENSION GLIDES
A7	2	PM2S2-1200 EXTRUSION-WITH NUT INSERT-WITH STOP AT 165MM

RIGHT AND LEFT VECTOR FRAMES

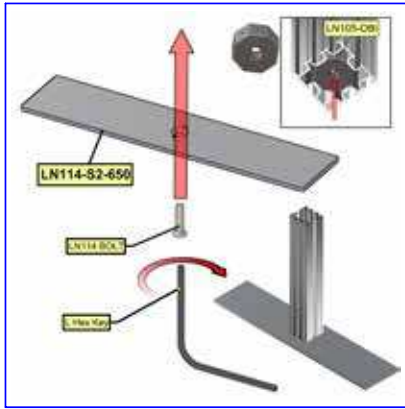


ASSEMBLY LAYING DOWN

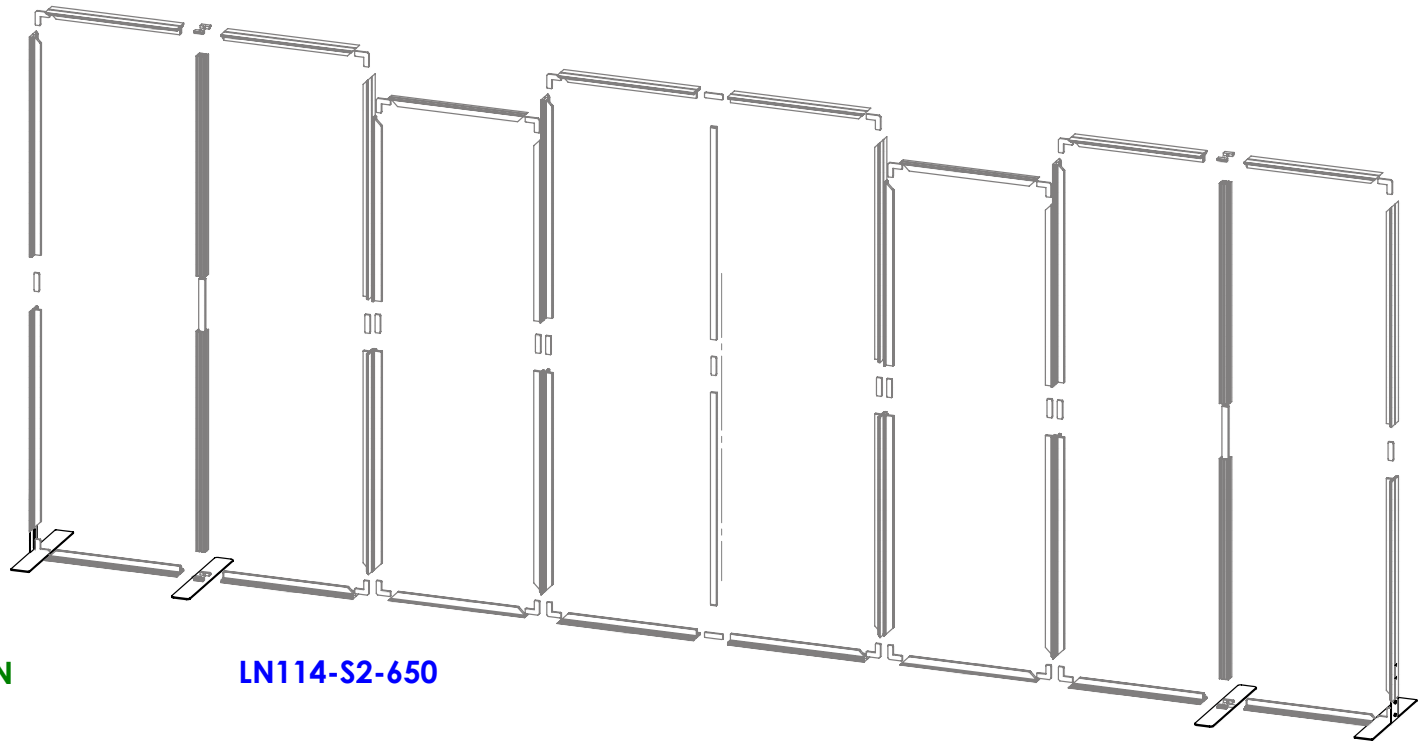
TOP VIEW



Code	#	Description
SW-FOOT-650-LN	2	SMART WALL FOOT 650MM LENGTH, WITH LN100 & M5 THUMBSCREWS
LN114-S2-650	2	FOOT PLATE , 650MM LENGTH



SW-FOOT-650-LN

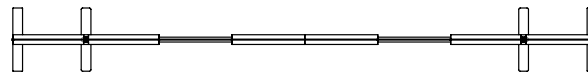


LN114-S2-650

LN114-S2-650

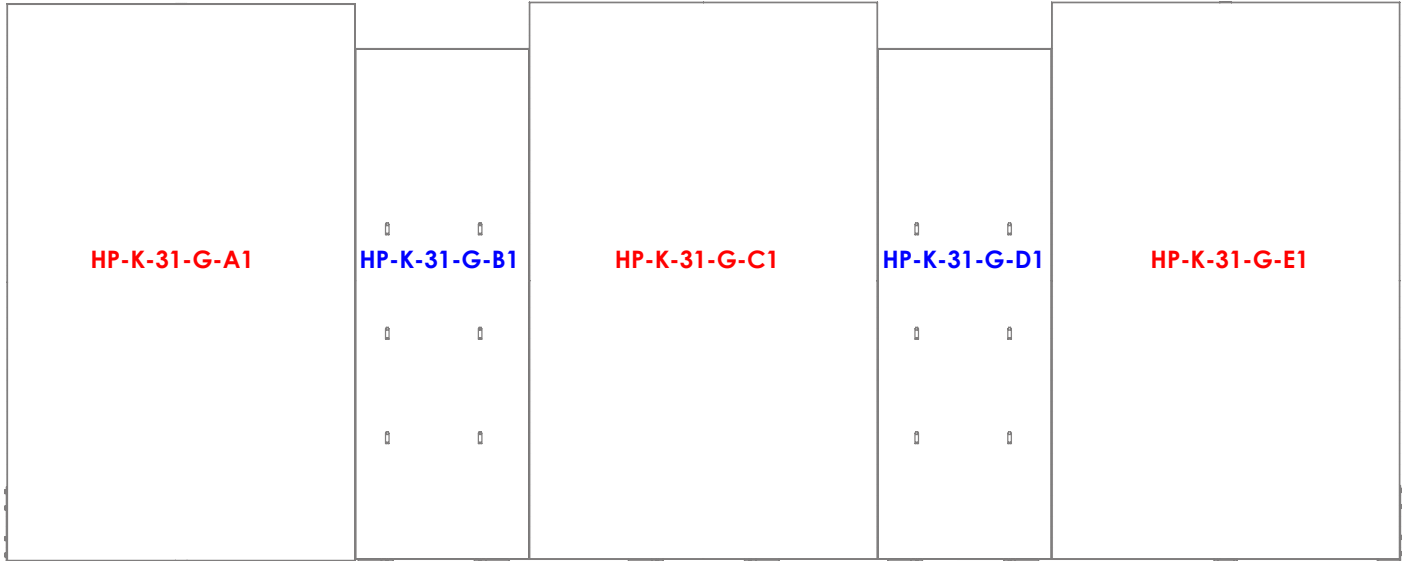
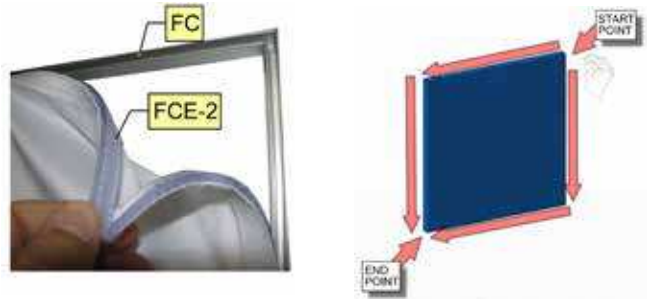
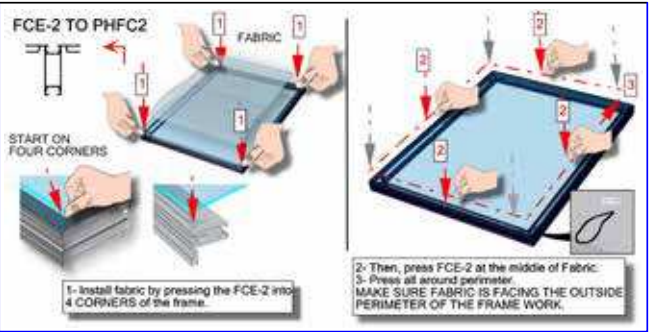
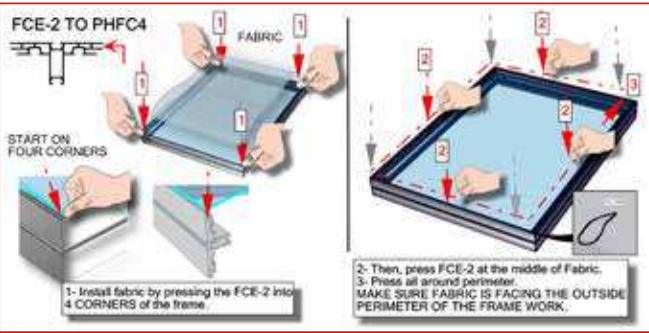
SW-FOOT-650-LN

TOP VIEW



GRAPHICS

Code	#	Description
HP-K-31-G-C1	1	GRAPHIC(C1) 58.94 w X 94.37 h finished size Dye-sub print on 8oz. Power Stretch, with FCE-2 silicone beading sewn to back perimeter, corner pull sewn in bottom right corner
HP-K-31-G-B1	1	GRAPHIC(B1) 29.41 w X 86.5 h finished size Dye-sub print on 8oz. Power Stretch, with FCE-2 silicone beading sewn to back perimeter, corner pull sewn in bottom right corner
HP-K-31-G-D1	1	GRAPHIC(D1) 29.41 w X 86.5 h finished size Dye-sub print on 8oz. Power Stretch, with FCE-2 silicone beading sewn to back perimeter, corner pull sewn in bottom right corner
HP-K-31-G-A1	1	GRAPHIC(A1) 58.94 w X 94.37 h finished size Dye-sub print on 8oz. Power Stretch, with FCE-2 silicone beading sewn to back perimeter, corner pull sewn in bottom right corner
HP-K-31-G-E1	1	GRAPHIC(E1) 58.94 w X 94.37 h finished size Dye-sub print on 8oz. Power Stretch, with FCE-2 silicone beading sewn to back perimeter, corner pull sewn in bottom right corner

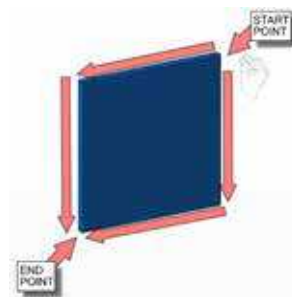
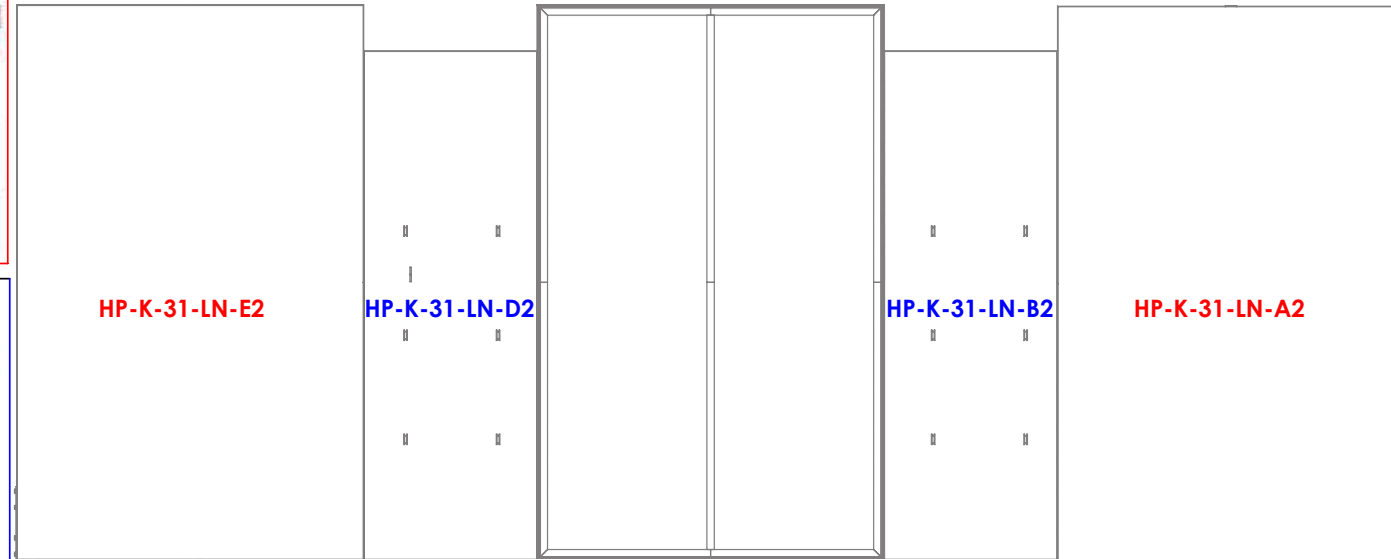
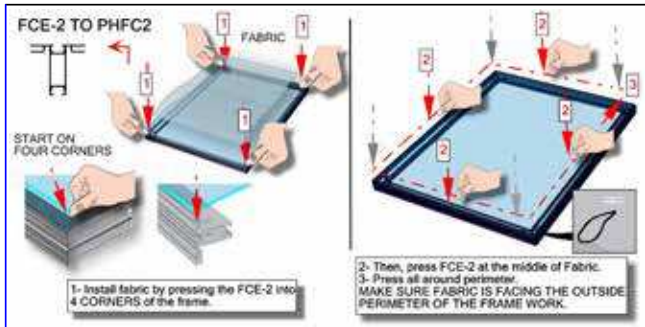
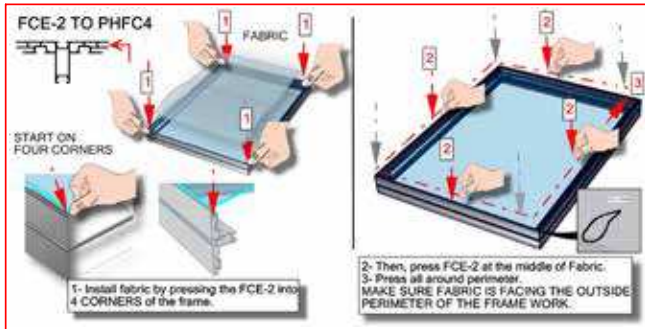


**AFTER THE GRAPHICS ARE INSTALLED
HAVE THREE PEOPLE HELP STAND THE
FRAME UP**



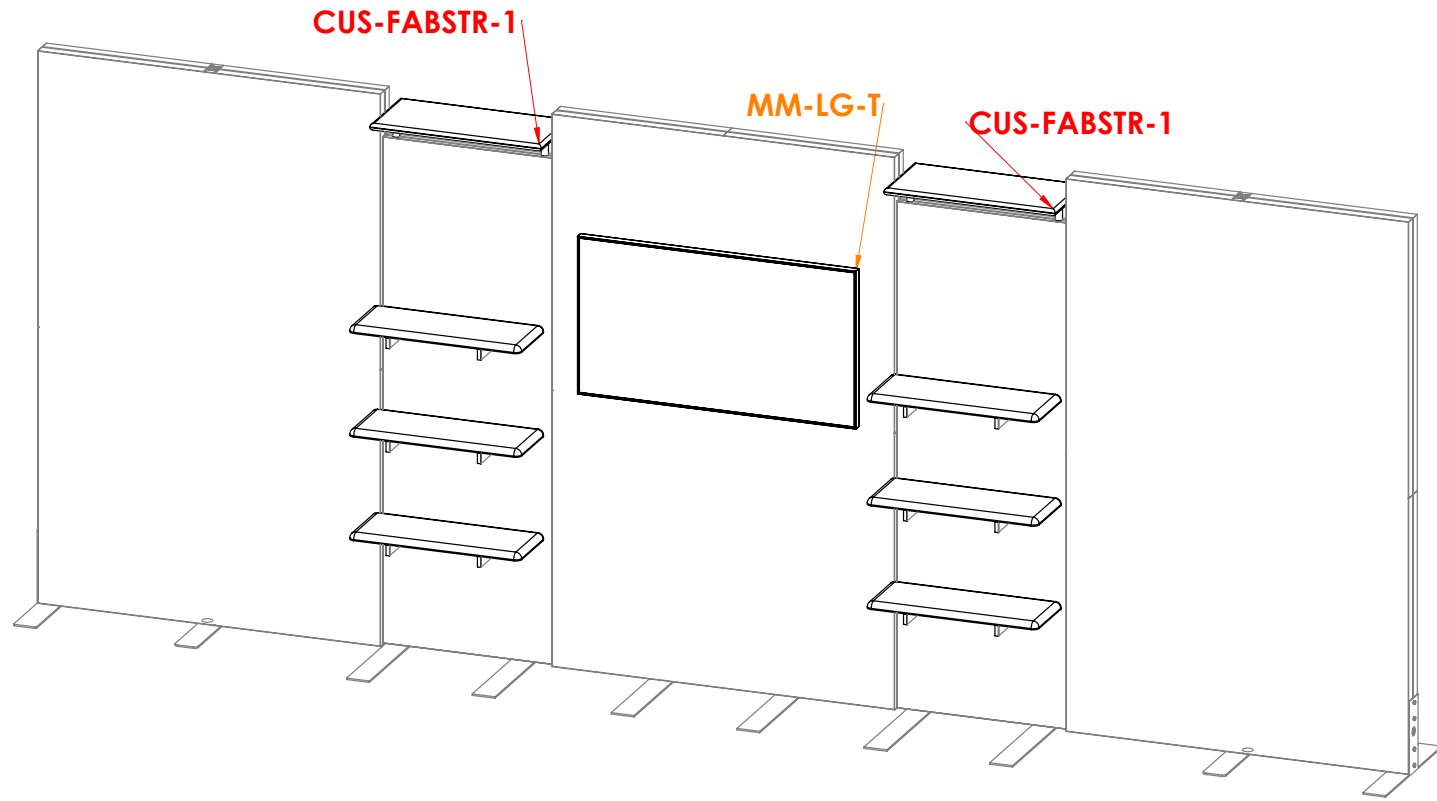
BACK LINER

Code	#	Description
HP-K-31-LN-B2	1	LINER(B2) 29.41 w X 86.5 h finished size Opaque liner, with FCE-2 silicone beading sewn to back perimeter, corner pull sewn in bottom right corner
HP-K-31-LN-D2	1	LINER(D2) 29.41 w X 86.5 h finished size Opaque liner, with FCE-2 silicone beading sewn to back perimeter, corner pull sewn in bottom right corner
HP-K-31-LN-E2	1	LINER(E2) 58.94 w X 94.37 h finished size Opaque liner, with FCE-2 silicone beading sewn to back perimeter, corner pull sewn in bottom right corner
HP-K-31-LN-A2	1	LINER(A2) 58.94 w X 94.37 h finished size Opaque liner, with FCE-2 silicone beading sewn to back perimeter, corner pull sewn in bottom right corner



Code	#	Description
CUS-FABSTR-1	2	350MM X 750MM X 30MM CUSTOM FABRIC SOFFET WITH LED LIGHTS
MM-LG-T	1	LARGE LCD MONITOR MOUNT, 40" - 65" SIZE, 80 LB. MAX. WEIGHT

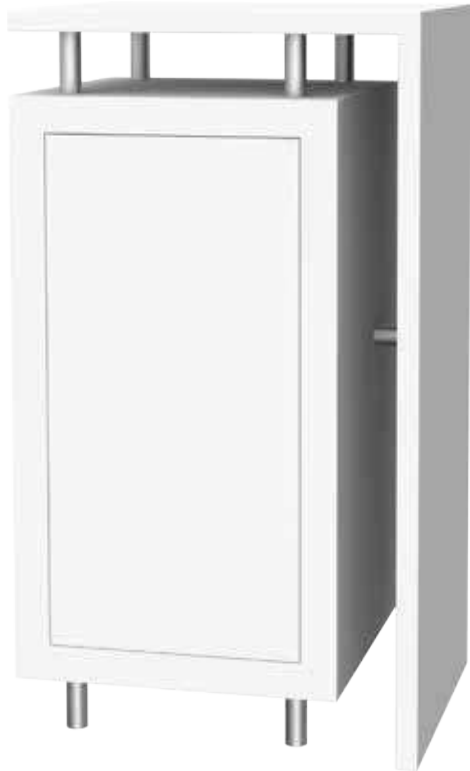
MONITOR MOUNT AND WOOD SOFFET LED



Hybrid Pro Counter 01-B

HPC-01-B

All Hybrid Pro™ Modular counters feature accessible storage and locking doors. Purchased magnet applied graphic panel allows for your messaging and branding.



features and benefits:

- 30mm aluminum stand offs
- Laminated cabinet with locking doors
- Laminated adjustable counter top
- 2 T-handle allen key tools included
- Kit includes an adjustable counter top and one wood crate
- Lifetime hardware warranty against manufacturer defects

dimensions:

Hardware

Graphic

Assembled unit:
21.9" w x 38.24" h x 17.72" d
557mm(w) x 971mm(h) x 450mm(d)

Refer to related graphic template for more information.

Approximate weight:
44 lbs / 20 kgs

Shipping

additional information:

Packing case(s):
1 HPC-01-B-CRATE

Recommended tools:
1/2" hex head wrench keys, not included

Shipping dimensions:
48" l x 31" h x 27" d
1220mm(l) x 787mm(h) x 686mm(d)

Panel Colors:



grey

black

white

Approximate total shipping weight:
182 lbs / 83 kgs

Included In Your Kit

Tools, Components, & Connectors



5MM ALLEN-T x1



T-HANDLE-5-32 x1



5/16" - 18 X 2"
SET SCREWS x9



5/16" - 18 X 2"
HEX BOLTS x4



CAM LOCK x4



5/16" - 1 1/4" OD
FENDER WASHERS x4



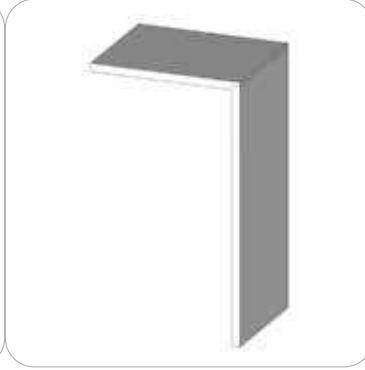
TUBE-30-ASY-1 x5



TUBE-30-ASY-2 x4



HPC-01-B-CAB x1



HPC-01-B-CT x1



HPC-01-B-INT x1

Connection Methods

Connection Method 1: CAM LOCK



First, with the cam lock disengaged, place the cam lock teeth into the extrusion channel. Second, use the allen key tool to lock it in place. Make half turns clock-wise to engage the cam lock. Do not over tighten the lock buttons.

Connection Method 2: TUBE-30-ASY-1 / TUBE-30-ASY-2

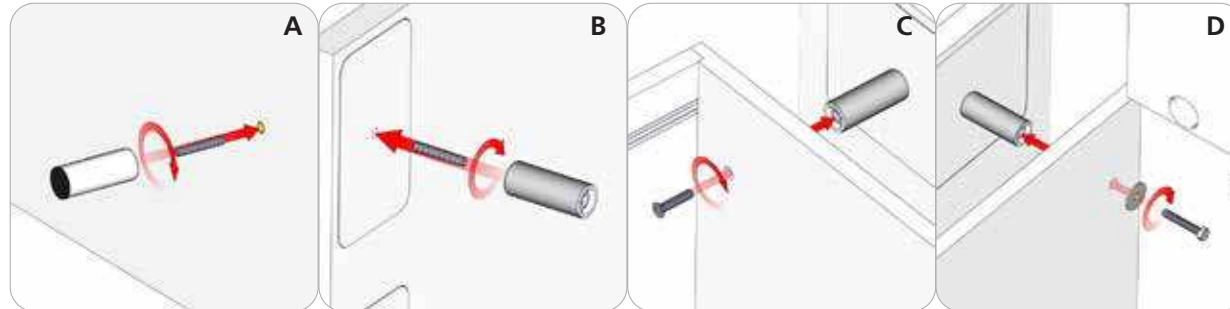


Image A. Use the hex key tool to drive the 2" set screw into the panel. Then, hand tighten the 30mm tube assembly 1 onto the set screw.

Image B. Use the hex key tool, to drive the 2" set screw into the panel. Then, hand tighten the 30mm tube assembly 2 onto the set screw.

Image C. Drive the countersink screws into the 30mm tube assembly 2.

Image D. Use a 1/2" hex wrench (tool not included) to drive the hex bolt and washer into the 30mm tube assembly 2.

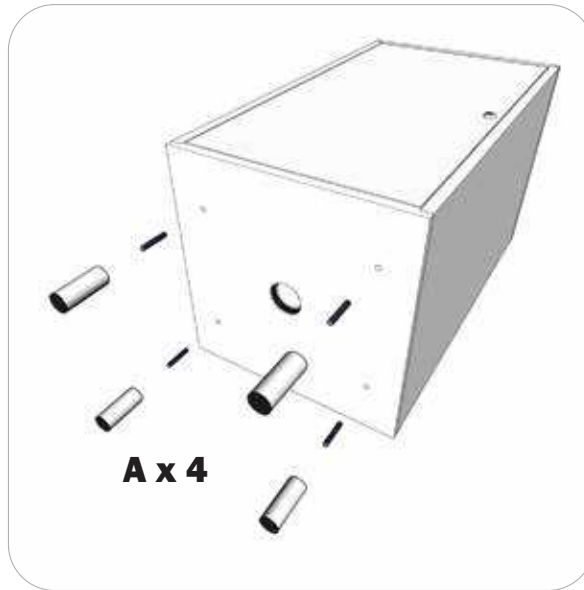
Kit Assembly

Step by Step

Step 1.

Use the provided hex key tool for attaching the 4 set screws. Make sure the set screws are flush to the inside surface and do not protrude into the cabinet. Next, hand tighten the 30mm tube feet onto the set screws.

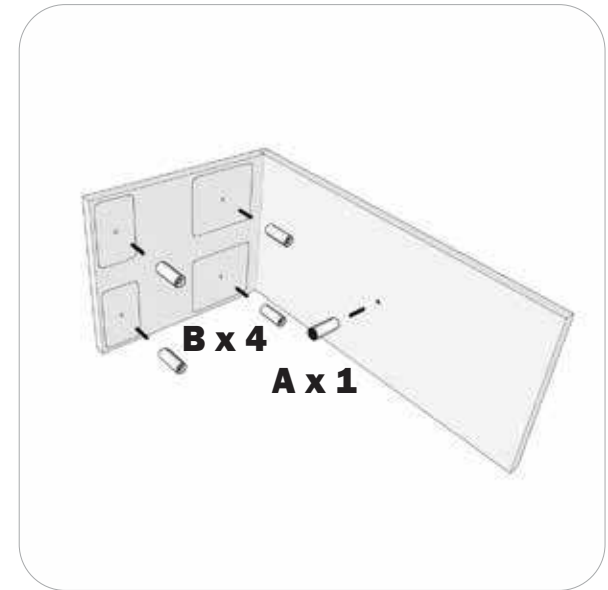
Reference Connection Method 3 Image A for more details.



Step 2.

Use the provided hex key tool for attaching the 5 set screws onto the counter top. Next, hand tighten the 30mm tube posts onto the set screws.

Reference Connection Method 3 Image A and B for more details.



Step 3.

Use a 1/2" hex wrench (tools not included) for attaching the four 30mm tube posts of the countertop onto the cabinet.

Reference Connection Method 3 Image D for more details.

This counter top can be assembled on the left or right.



Step 4.

Using the provided allen key tool, attach the 4 camlocks into the cabinets inside extrusion channels. Make sure they are all at the same height and level for the internal shelf.

