

Hybrid Pro 10FT Modular Backwall Kit 30

HP-K-30

Hybrid Pro™ Modular Kit 30 is a dynamic modular exhibit that features an 8' tall backwall, six shelves for small product display with two laminate soffit with puck lights and a central monitor mount that holds a large sized monitor. Push-fit SEG fabric graphics are easy to apply to the backwall.



Hybrid pro counter is optional
not included at base price

features and benefits:

- Silver aluminum extrusion frames (3)
- SEG push-fit fabric graphics (5)
- Shelf color options: Silver, Black, Mahogany, Natural
- Large monitor bracket holds 40-65" LCD*, max weight: 80 lbs

- Ships freight in a roto-molded protective shipping case
- Foreground counter and LCD monitor not included"
- Each shelf can hold 15lbs
- Lifetime hardware warranty against manufacturer defects

- dimensions:

Hardware

Graphic

Assembled unit:
118.36" w x 95.45" h x 30.2" d
3006.35mm(w) x 2424.43mm(h) x
767.08mm(d)

Approximate weight:
300lbs / 136.08 kg

Refer to related graphic template for more information.

Shipping

additional information:

Packing case(s):
OCF2

Shipping dimensions:
51" l x 51" h x 24" d
1296mm(l) x 1296mm(h) x 609mm(d)

Approximate total shipping weight:
370lbs / 168kg

Graphic material:
c Dye-sublimation SEG push-fit fabric

When included in a larger kit, a different packaging solution will be listed to accommodate all contents of the kit. Individual packaging no longer provided.

Tabletop Colors:



silver black mahogany natural

2 person assembly recommended:



Setup notes

1. Redesign of this exhibit without approval by manufacture may result in dangerous and unsafe structures. Manufacture disclaims any responsibility for redesigned exhibits it does not approve in writing.

2.Parts and components such as panels and extrusions are manufactured to metric sizing.Where ever possible sizes have been noted in feet and inches as well as in metric.Below is the imperial to metric sizing table as a reference. 'Nominal' refers to approximate sizes.

IMPERIAL TO METRIC SIZES

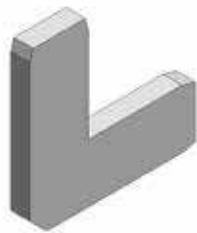
8' Nominal = 94 1/2" or 2400mm Actual
4' Nominal = 47 1/4" or 1200mm Actual
3' Nominal = 35 7/16" or 900mm Actual
2' Nominal = 23 5/8" or 600mm Actual
1' Nominal = 11 13/16" or 300mm Actual

Included In Your Kit

Tools, Components, & Connectors



HEX KEY SET x1



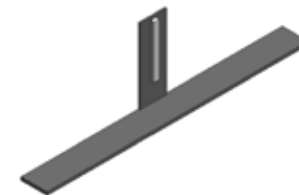
CB9 x12



IB2 x8



WOOD-SOFFET x2



SW-FOOT-500-LNx2



CUS-PHFC2-750-MCB9-MCB9x4



PHFC2-1200-L1-MCB9 x2



PHFC2-1000-L1-MCB9 -x2



PHFC2-1000-L-MCB9-SIDE x2



PHFC2-1200-L-MCB9-SIDEx2



PHFC4-1200-L-MCB9-x4



PHFC2-750-L-MCB9x4

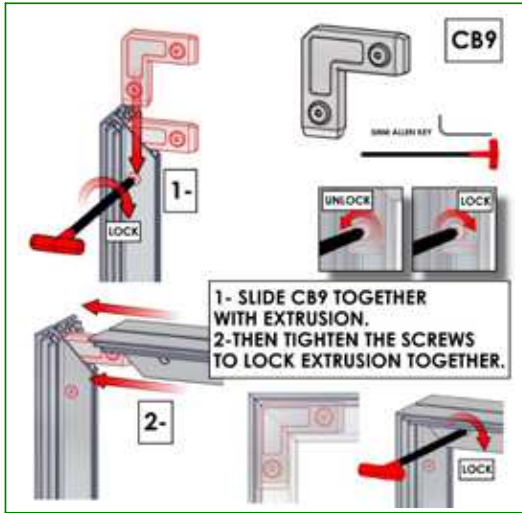
CODEx0

CODE x0

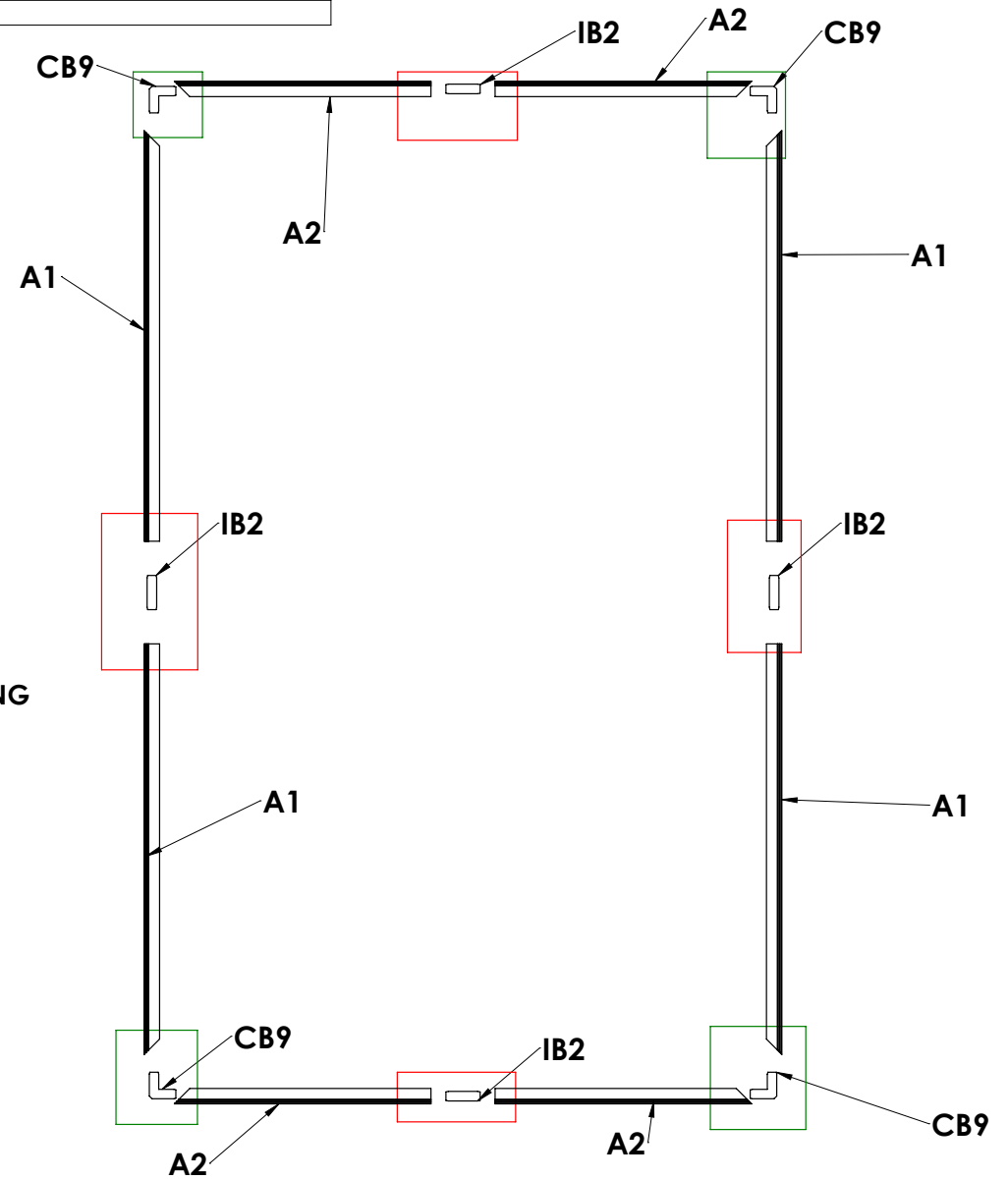
CODEx0

Code	#	Description
A2	4	750MM CUT DOWN FROM 900MM LENGTH OF PHFC4 EXTRUSION-WITH IB2 LOCK HOLE-WITH MITRE CUT FOR CB9
CB9	4	90 DEGREE JOINER
A1	4	PHFC4-1200 EXTRUSION-WITH IB2 LOCK HOLE-WITH MITRE CUT FOR CB9
IB2	4	JOINER BAR(NEW DESIGN)

CENTER VECTOR FRAME

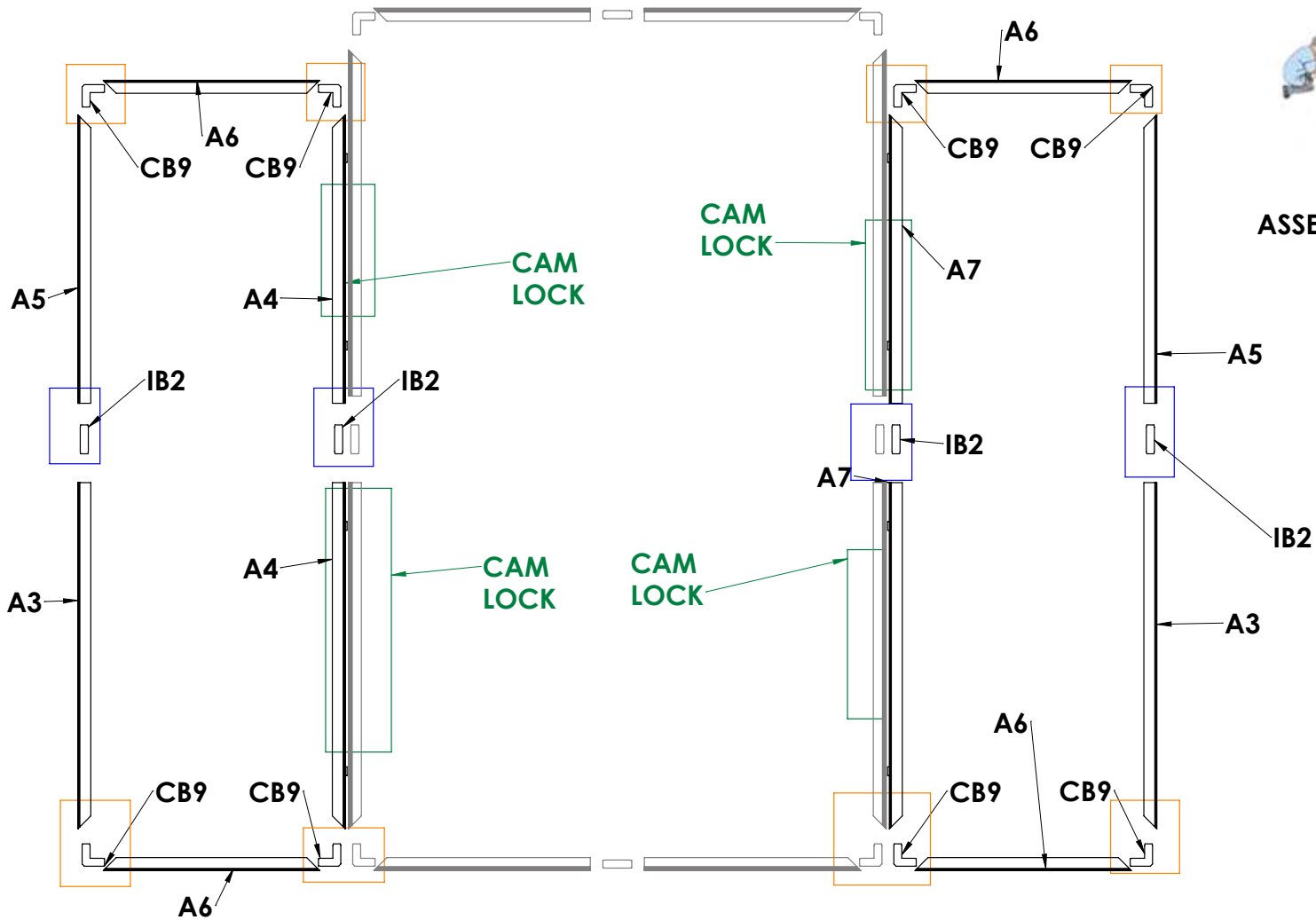
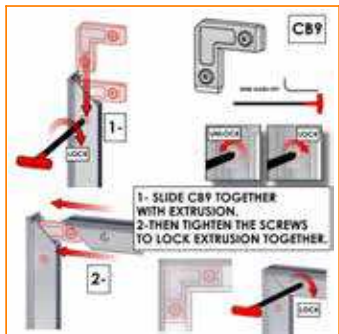


ASSEMBLE FRAME LAYING DOWN



Code	#	Description
CB9	8	90 DEGREE JOINER
A3	2	PHFC2-1200 EXTRUSION-WITH IB2 LOCK HOLE-WITH MITRE CUT FOR CB9
A4	2	PHFC2-1200 EXTRUSION-WITH IB2 LOCK HOLE-WITH MITRE CUT FOR CB9-SIDE LOCKS
A6	4	750MM CUT DOWN FROM 900MM LENGTH OF PHFC2 EXTRUSION-WITH MITRE CUT FOR CB9-WITH MITRE CUT FOR CB9
IB2	4	JOINER BAR(NEW DESIGN)
A7	2	PHFC2-1000 EXTRUSION-WITH MITRE CUT FOR CB9-WITH IB2 LOCK HOLE-SIDE LOCKS
A5	2	PHFC2-1000 EXTRUSION-WITH MITRE CUT FOR CB9-WITH IB2 LOCK HOLE

LEFT&RIGHT VECTOR FRAME



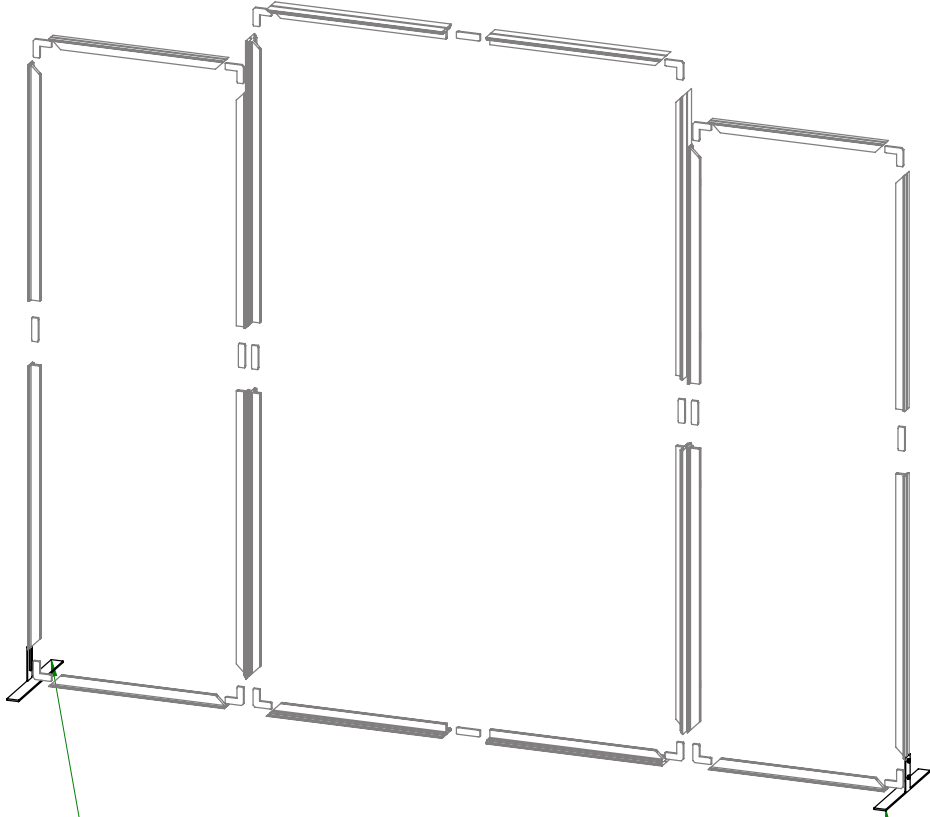
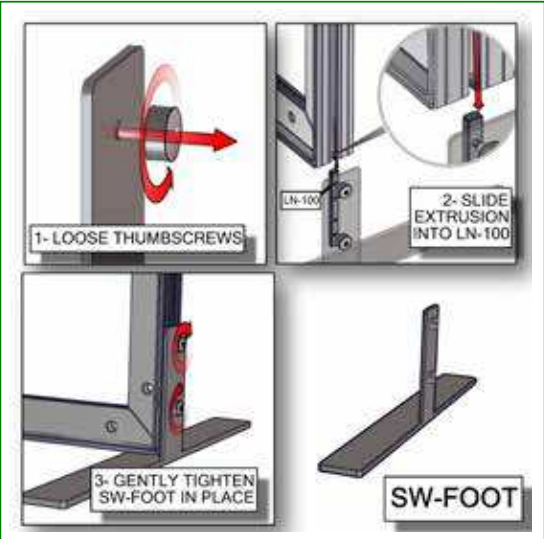
ASSEMBLY LAYING DOWN

Code	#	Description
SW-FOOT-500-LN	2	SMART WALL FOOT 500MM LENGTH, WITH LN100 & M5 THUMBSCREWS

SMART WALL FOOT INSTALLATION



**ASSEMBLE FEET WHILE FRAME
IS LAYING DOWN**



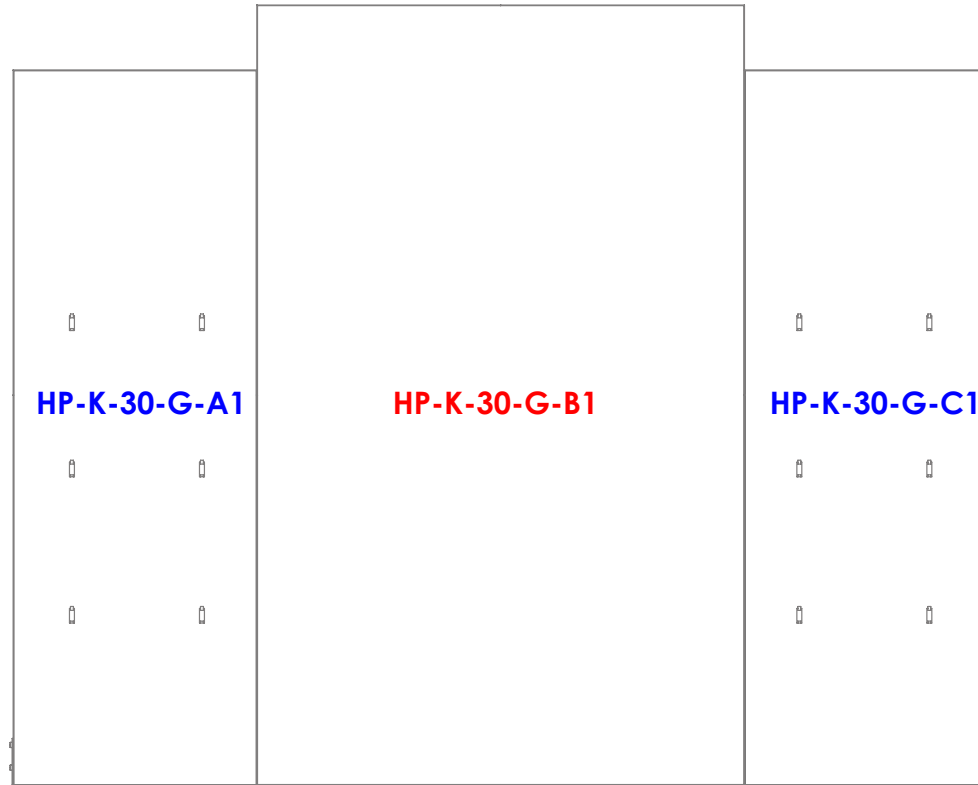
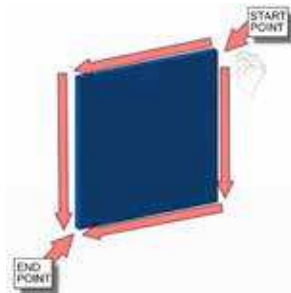
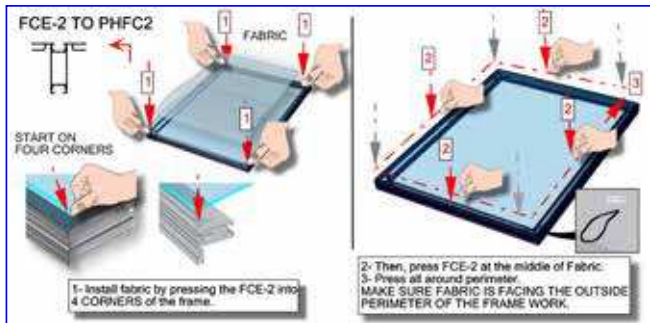
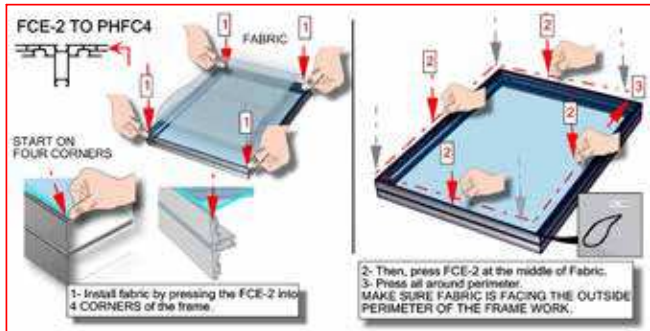
SW-FOOT-500-LN

SW-FOOT-500-LN

BOM Table

Code	#	Description
HP-K-30-G-A1	1	GRAPHIC(A1) 29.41 w X 86.5 h finished size Dye-sub print on 8oz. Power Stretch, with FCE-2 silicone beading sewn to back perimeter, corner pull sewn in bottom right corner
HP-K-30-G-C1	1	GRAPHIC(C1) 29.41 w X 86.5 h finished size Dye-sub print on 8oz. Power Stretch, with FCE-2 silicone beading sewn to back perimeter, corner pull sewn in bottom right corner
HP-K-30-G-B1	1	GRAPHIC(B1) 58.94 w X 94.37 h finished size Dye-sub print on 8oz. Power Stretch, with FCE-2 silicone beading sewn to back perimeter, corner pull sewn in bottom right corner

GRAPHICS

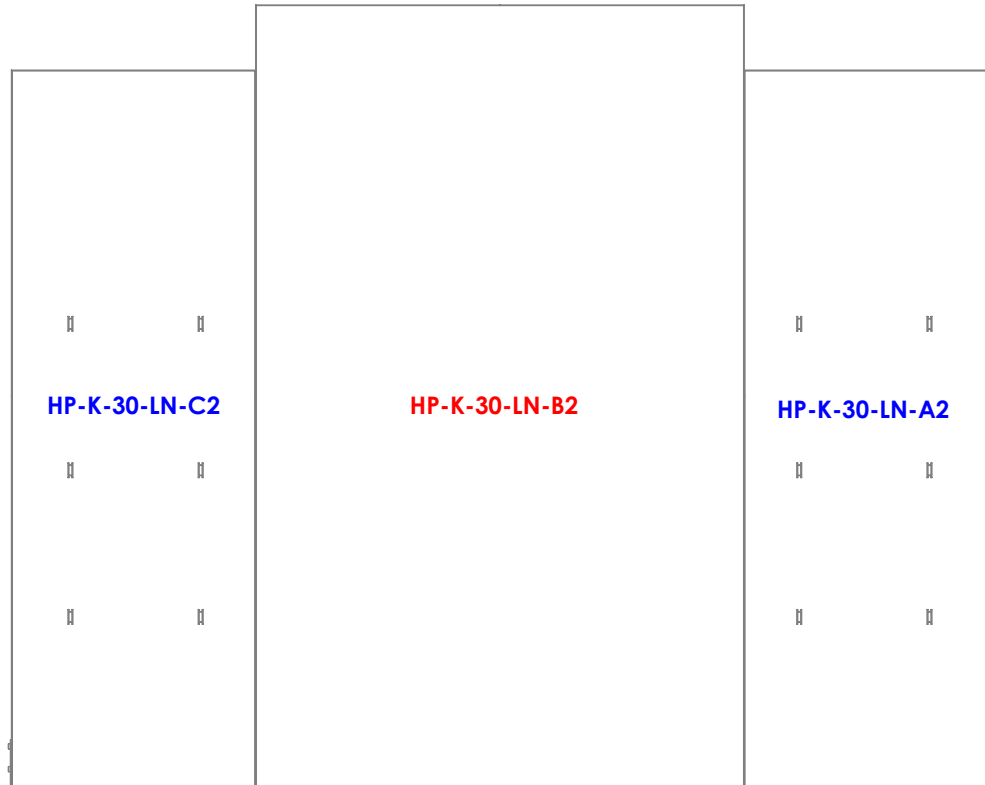
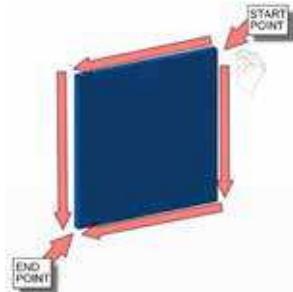
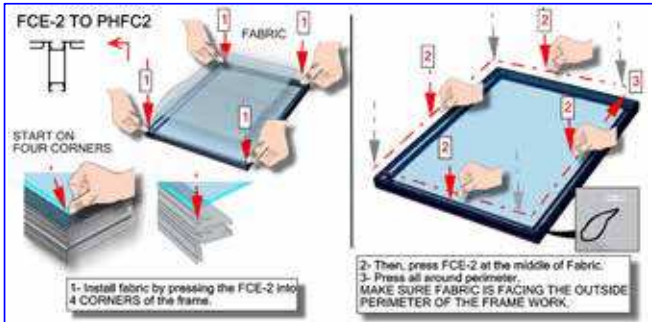
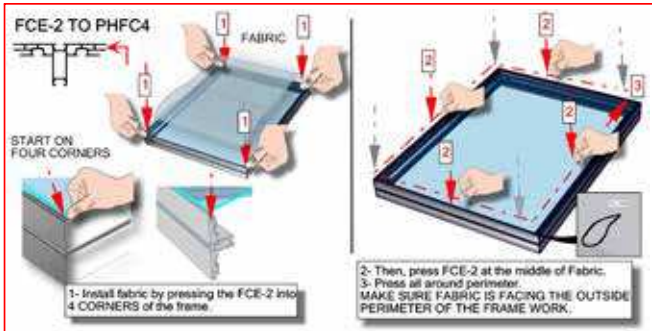


**STAND UP AFTER YOU INSTALL THE GRAPHICS
HAVE TWO OR MORE PEOPLE HELP**



Code	#	Description
CUS-OP-LN	1	LINER(A2) 29.41 w X 86.5 h finished size Opaque liner, with FCE-2 silicone beading sewn to back perimeter, corner pull sewn in bottom right corner
CUS-OP-LN	1	LINER(C2) 29.41 w X 86.5 h finished size Opaque liner, with FCE-2 silicone beading sewn to back perimeter, corner pull sewn in bottom right corner
CUS-OP-LN	1	LINER(B2) 58.94 w X 94.37 h finished size Opaque liner, with FCE-2 silicone beading sewn to back perimeter, corner pull sewn in bottom right corner

BACK LINER



Code	#	Description
CUS-FABSTR-1	2	350MM X 750MM X 30MM CUSTOM FABRIC SOFFET WITH LED LIGHTS
MM-LG-T	1	LARGE LCD MONITOR MOUNT, 40" - 65" SIZE, 80 LB. MAX. WEIGHT

MONITOR AND LED MOUNT INSTALL

