

# Hybrid Pro Modular Backwall Kit 28

## HP-K-28

Hybrid Pro™ Modular Kit 28 is a dynamic modular exhibit that features an 8' tall backwall, six shelves for small product display and a Push-fit SEG fabric graphics are easy to apply to the backwall and the interior and exterior facing side walls.



Hybrid Pro counter not included in base price

## features and benefits:

- Silver aluminum extrusion frame (1)
- SEG push-fit fabric graphics (1)
- six shelves for small product display; each shelf holds max 15lbs
- Shelf color options: Silver, Black, Mahogany, Natural
- Ships freight in a protective plastic freight case
- Foreground counter not included"
- Lifetime hardware warranty against manufacturer defects

## dimensions:

Hardware

Graphic

Assembled unit:

231.69"w x 95.45"h x 32.48"d

5882.64mm(w) x 2424.43mm(h) x 825mm(d)

Refer to related graphic template for more information.

Approximate weight:

274.58lbs / 124.55 kg

Shipping

## additional information:

Packing case(s):

OCF2

Graphic material:  
Dye-sublimation zipper pillowcase fabric  
Dye-sublimation SEG push-fit fabric

Shipping dimensions:

When included in a larger kit, a different packaging solution will be listed to accommodate all contents of the kit.  
Individual packaging no longer provided.

OCF2:

51"l x 51"h x 24"d

1321mm(l) x 737mm(h) x 381mm(d)

### Panel Colors:



grey



black



white

### Tabletop Colors:



silver



black



mahogany



natural

3 person assembly recommended:



# Setup notes

1. Redesign of this exhibit without approval by manufacture may result in dangerous and unsafe structures. Manufacture disclaims any responsibility for redesigned exhibits it does not approve in writing.

2. Parts and components such as panels and extrusions are manufactured to metric sizing. Where ever possible sizes have been noted in feet and inches as well as in metric. Below is the imperial to metric sizing table as a reference. 'Nominal' refers to approximate sizes.

## IMPERIAL TO METRIC SIZES

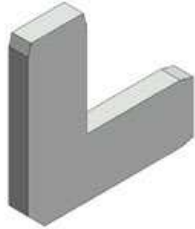
8' Nominal = 94 1/2" or 2400mm Actual  
4' Nominal = 47 1/4" or 1200mm Actual  
3' Nominal = 35 7/16" or 900mm Actual  
2' Nominal = 23 5/8" or 600mm Actual  
1' Nominal = 11 13/16" or 300mm Actual

# Included In Your Kit

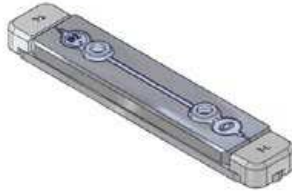
Tools, Components, & Connectors



HEX KEY SET x1



CB9 x8



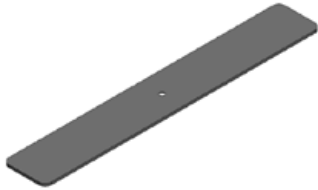
IB2 x10



PH2-300-TG x4



PM453-1200-A165x4



LN114-S2-650x4



PH1-1155-L-L1 x4



PM453-1200-A165-N-x4



PHFC4-1200-L-MCB9-SIDE x8



PHFC4-1200-L-MCB9x8

CODE-x0

CODEx0

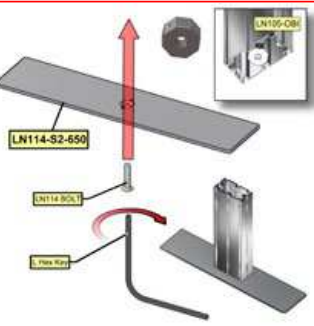
CODEx0

CODE x0

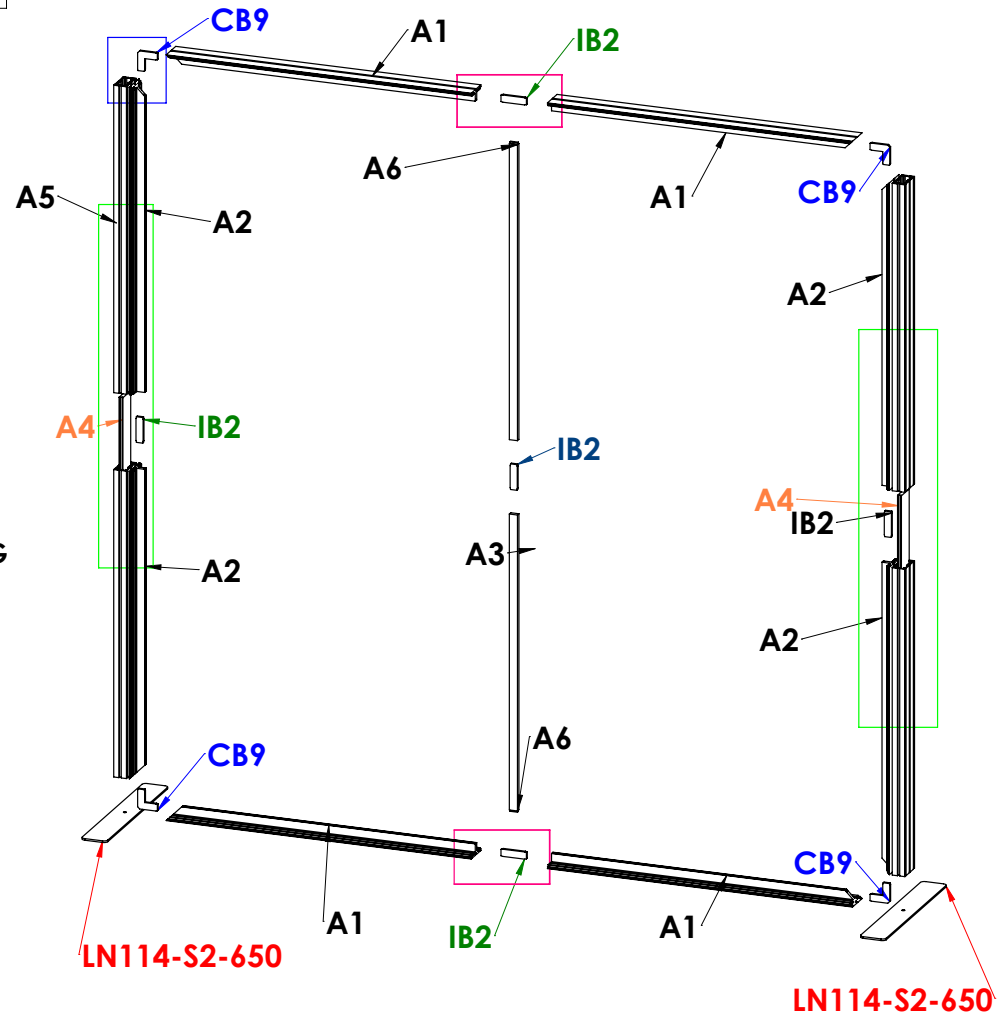
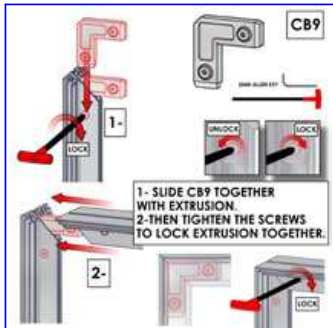
CODEx0

| Code         | #  | Description   |
|--------------|----|---|
| IB2          | 10 | JOINER BAR(NEW DESIGN)  |
| A1           | 8  | PHFC4-1200 EXTRUSION-WITH IB2 LOCK HOLE-WITH MITRE CUT FOR CB9      |
| A2           | 8  | PHFC4-1200 EXTRUSION-WITH IB2 LOCK HOLE-WITH MITRE CUT FOR CB9-SIDE |
| CB9          | 8  | 90 DEGREE JOINER  |
| A5           | 4  | 1200MM PM4S3-1200 EXTRUSION-WITH STOP AT 165MM                      |
| A4           | 4  | 300MM PH2-TG EXTRUSION  |
| A3           | 4  | 1200MM PM4S3-1200 EXTRUSION-WITH STOP AT 165MM-WITH NUT INSERT      |
| A6           | 4  | 1155MM PH1 EXTRUSION-WITH IB2 LOCK HOLE-CAM LOCK                    |
| LN114-S2-650 | 4  | FOOT PLATE , 650MM LENGTH   |

# VECTOR FRAME X 2

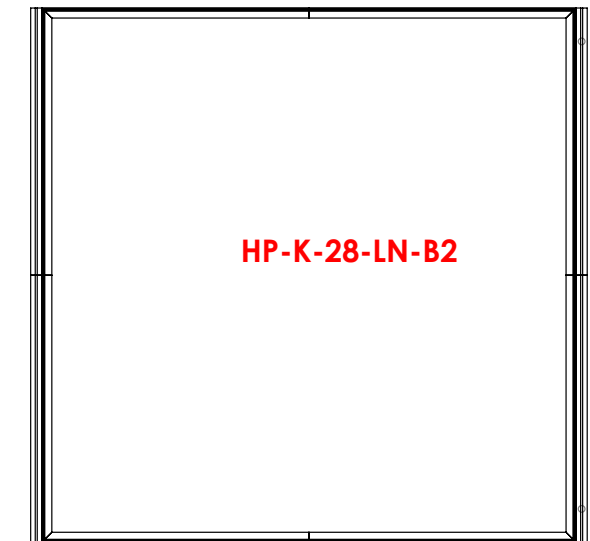
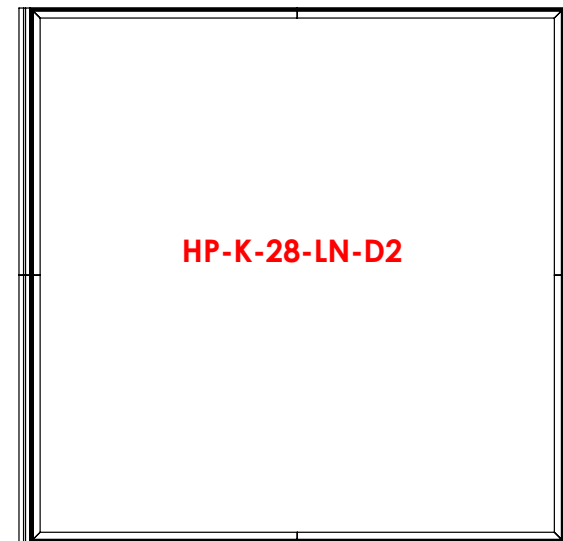
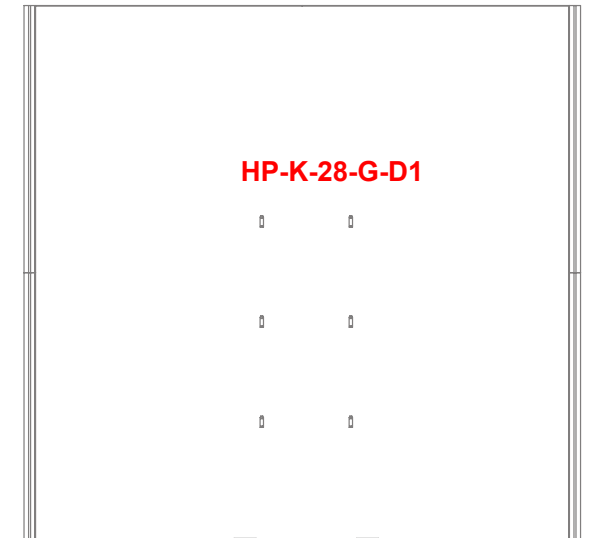
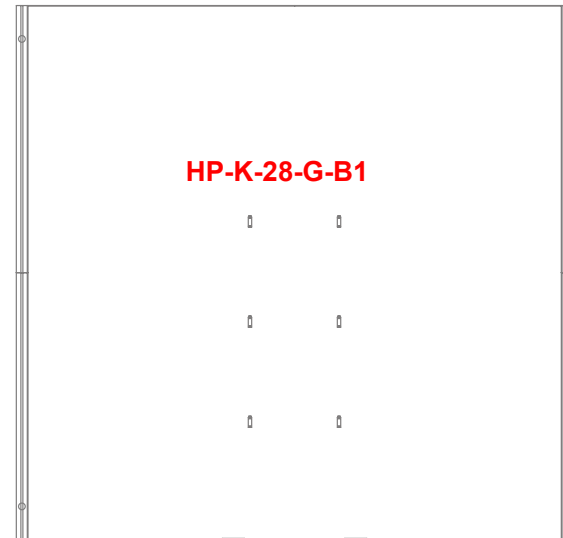
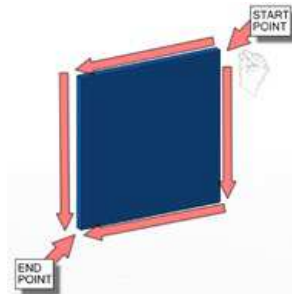
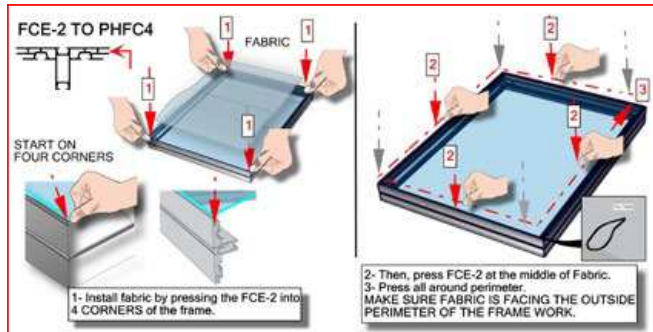


**ASSEMBLE FRAMES LAYING DOWN STAND UP AFTER ATTACHING GRAPHICS**



# GRAPHICS 1

| Code          | # | Description  |
|---------------|---|--|
| HP-K-28-G-D1  | 1 | GRAPHIC( D1 ) 94.37 w X 94.37 h finished size Dye-sub print on 8oz. Power Stretch, with FCE-2 silicone beading sewn to back perimeter, corner pull sewn in bottom right corner |
| HP-K-28-LN-D2 | 1 | LINER( D2 ) 94.37 w X 94.37 h finished size Opaque liner, with FCE-2 silicone beading sewn to back perimeter, corner pull sewn in bottom right corner                          |
| HP-K-28-LN-B2 | 1 | LINER( B2 ) 94.37 w X 94.37 h finished size Opaque liner, with FCE-2 silicone beading sewn to back perimeter, corner pull sewn in bottom right corner                          |
| HP-K-28-G-B1  | 1 | GRAPHIC( B1 ) 94.37 w X 94.37 h finished size Dye-sub print on 8oz. Power Stretch, with FCE-2 silicone beading sewn to back perimeter, corner pull sewn in bottom right corner |



SET UP INSTRUCTIONS:

1. CONNECT BOTTOM AND TOP TUBES FOLLOWING THE LABELS
2. CONNECT SIDE TUBES
3. CLEAN THE FRAME AND PLACE THEM ON CLEAN PLACE
4. CAREFULLY REMOVE FABRIC COVER FROM BAG
5. PLACE COVER AROUND THE BOTTOM OF THE FRAME
6. PULL COVER CAREFULLY UP TO THE TOP
7. CLOSE ALL ZIPPERS
8. ADJUST FABRIC AROUND THE FRAME
9. CONNECT CABLE HARNESS TO THE EYEBOLTS
10. COMPLETELY TIGHTEN THREADED CONNECTORS

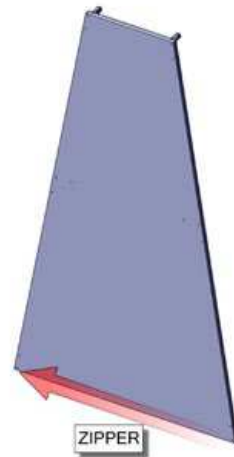
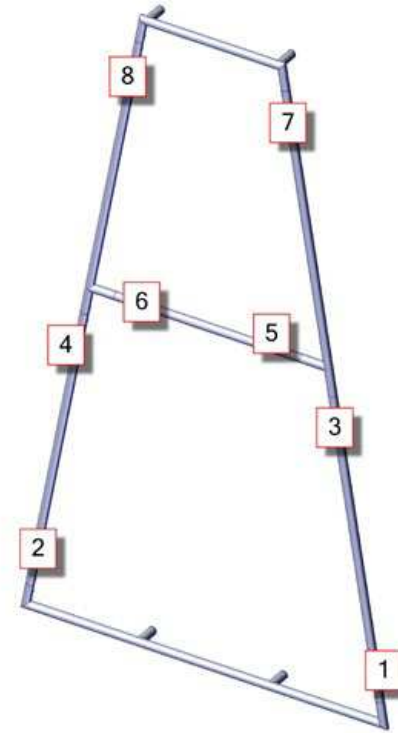
BREAK DOWN INSTRUCTIONS:

REVERSE SET-UP STEPS TO BREAKDOWN FRAME

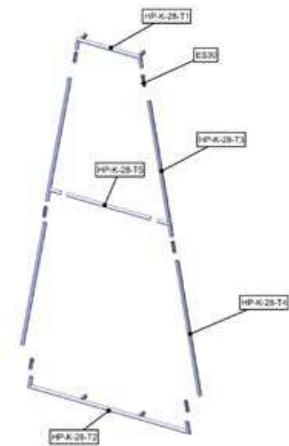
FABRIC CARE INSTRUCTIONS:

1. UNZIP COVER ZIPPERS
2. CAREFULLY REMOVE FABRIC COVER
3. CLOSE ALL ZIPPERS
4. FOLD OR ROLL NEATLY
5. PLACE FABRIC IN COVER BAG

# LABELING DIAGRAM FOR HP-K-28-SQU



**PARTS DIAGRAM**



# LABELING DIAGRAM FOR HP-K-28-A&B-SQU

## SET UP INSTRUCTIONS:

1. CONNECT BOTTOM AND TOP TUBES FOLLOWING THE LABELS
2. CONNECT SIDE TUBES
3. CLEAN THE FRAME AND PLACE THEM ON CLEAN PLACE
4. CAREFULLY REMOVE FABRIC COVER FROM BAG
5. PLACE COVER AROUND THE BOTTOM OF THE FRAME
6. PULL COVER CAREFULLY UP TO THE TOP
7. CLOSE ALL ZIPPERS
8. ADJUST FABRIC AROUND THE FRAME
9. CONNECT CABLE HARNESS TO THE EYEBOLTS
10. COMPLETELY TIGHTEN THREADED CONNECTORS

**ZIPPER ON BOTTOM OF BOTH**

**HP-K-28-A  
HP-K-28-B**



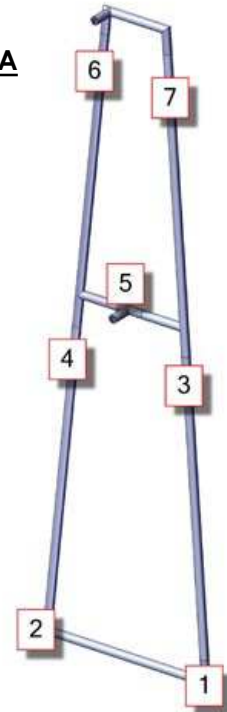
## BREAK DOWN INSTRUCTIONS:

REVERSE SET-UP STEPS TO BREAKDOWN FRAME

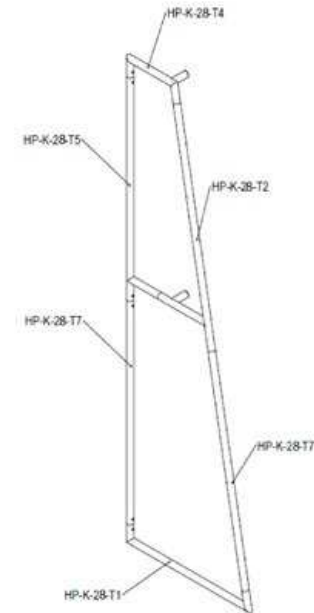
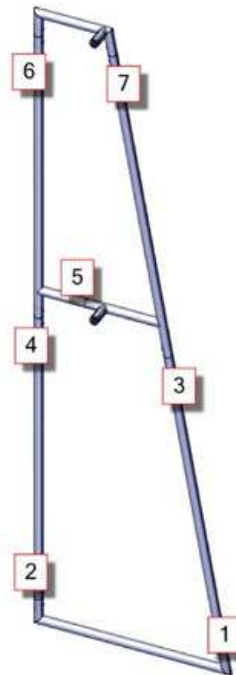
## FABRIC CARE INSTRUCTIONS:

1. UNZIP COVER ZIPPERS
2. CAREFULLY REMOVE FABRIC COVER
3. CLOSE ALL ZIPPERS
4. FOLD OR ROLL NEATLY
5. PLACE FABRIC IN COVER BAG

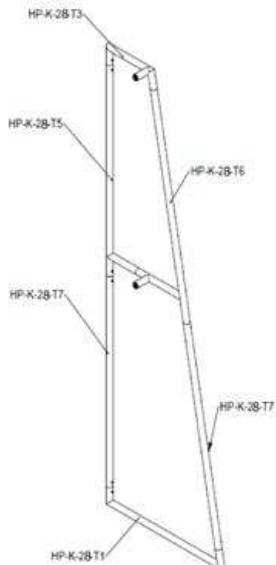
**HP-K-28-A**



**HP-K-28-B**



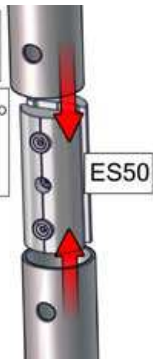
**PARTS DIAGRAM**



**PARTS DIAGRAM**

STEP #1:  
SLIDE THE JOINER INTO THE TUBING SO THE THE HEX SCREW SITS IN THE HOLE ON THE TUBINGER

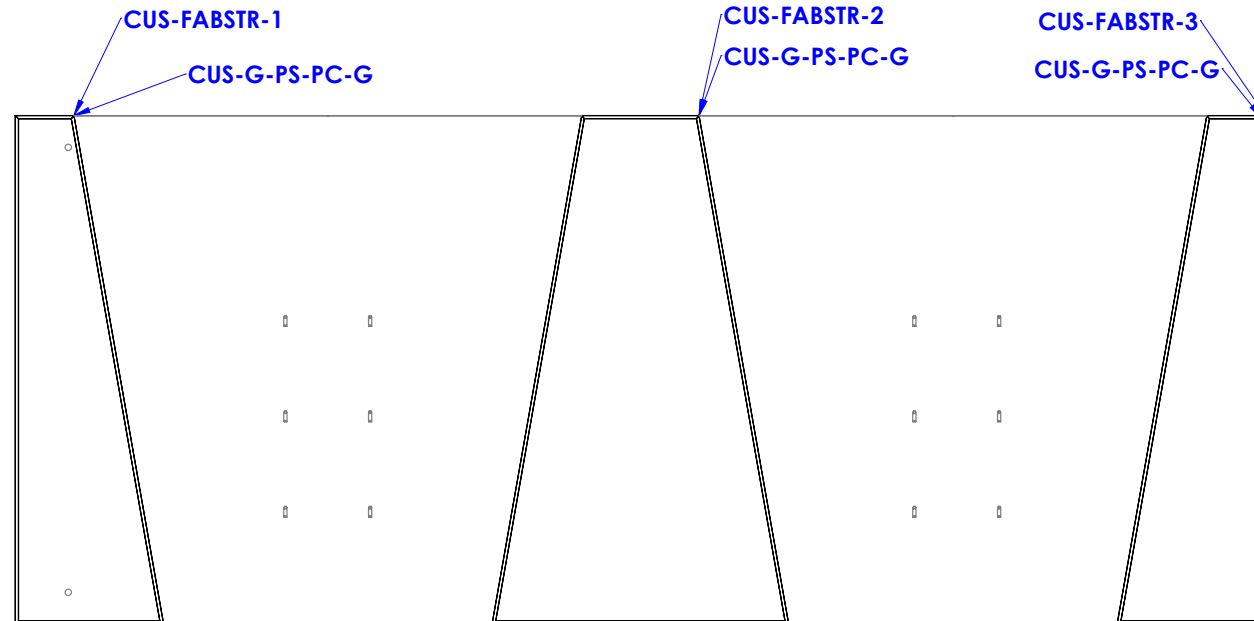
STEP #2:  
TIGHTEN THE HEX SCREW SO THE JOINER SEPERATES AND TIGHTENS AGAINST THE INSIDE OF THE TUBING, LOCKING THE JOINER AND TUBING TOGETHER



| Code          | # | Description  |
|---------------|---|--|
| CUS-FABSTR-2  | 1 | 1200MM X 2400MM, 30MM CUSTOM FABRIC STRUCTURE  |
| CUS-G-PS-PC-G | 1 | GRAPHIC( C1 ) 47.25 w x 94.50 h Pillowcase Graphic, dye-sub print on 8oz. Power Stretch, single sided, sewn with zipper. |
| CUS-FABSTR-1  | 1 | 600MM X 2400MM, 30MM CUSTOM FABRIC STRUCTURE   |
| CUS-G-PS-PC-G | 1 | GRAPHIC( A1 ) 23.62 w x 94.50 h Pillowcase Graphic, dye-sub print on 8oz. Power Stretch, single sided, sewn with zipper. |
| CUS-FABSTR-3  | 1 | 600MM X 2400MM, 30MM CUSTOM FABRIC STRUCTURE   |
| CUS-G-PS-PC-G | 1 | GRAPHIC( E1 ) 23.62 w x 94.50 h Pillowcase Graphic, dye-sub print on 8oz. Power Stretch, single sided, sewn with zipper. |

# FABRIC STRUCTURE GRAPHICS

**HAVE TWO PEOPLE HELP WITH MOUNTING THE FABRIC STRUCTURE**



**TOP VIEW**

