

Hybrid Pro 10FT Modular Backwall Kit 27

HP-K-27

Hybrid Pro™ Modular Kit 27 is a minimal, yet sophisticated modular exhibit that features a seamless fabric backwall with three shelves for small product display. Experience how less is more with this simple and sophisticated modular display.



Hybrid pro counter is optional not included at base price

features and benefits:

- Silver aluminum extrusion frame (1)
- SEG push-fit fabric graphics (1)
- Three shelves for small product display; each shelf holds max 15lbs
- Shelf color options: Silver, Black, Mahogany, Natural
- Ships freight in a protective plastic freight case
- Foreground counter not included
- Lifetime hardware warranty against manufacturer defects

dimensions:

Hardware

Graphic

Assembled unit:
221.19" w x 95.45" h x 68.92" d
5618.23mm(w) x 2424.43mm(h) x 1750.57mm(d)

Refer to related graphic template for more information.

Approximate weight:
428 lbs / 194.14kg

Shipping

additional information:

Packing case(s):
OFC

Graphic material:
Dye-sublimation zipper pillowcase fabric
Dye-sublimation SEG push-fit fabric

Shipping dimensions:

When included in a larger kit, a different packaging solution will be listed to accommodate all contents of the kit. Individual packaging no longer provided.

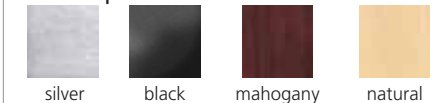
49" l x 39" h x 15" d
1245mm(l) x 1991mm(h) x 381mm(d)

Approximate total shipping weight:
543.65 lbs / 246.6 kg

Panel Colors:



Tabletop Colors:



3 person assembly recommended:



Setup notes

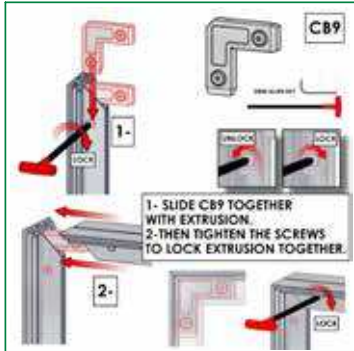
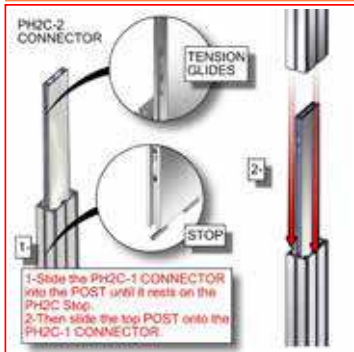
1. Redesign of this exhibit without approval by manufacture may result in dangerous and unsafe structures. Manufacture disclaims any responsibility for redesigned exhibits it does not approve in writing.

2. Parts and components such as panels and extrusions are manufactured to metric sizing. Where ever possible sizes have been noted in feet and inches as well as in metric. Below is the imperial to metric sizing table as a reference. 'Nominal' refers to approximate sizes.

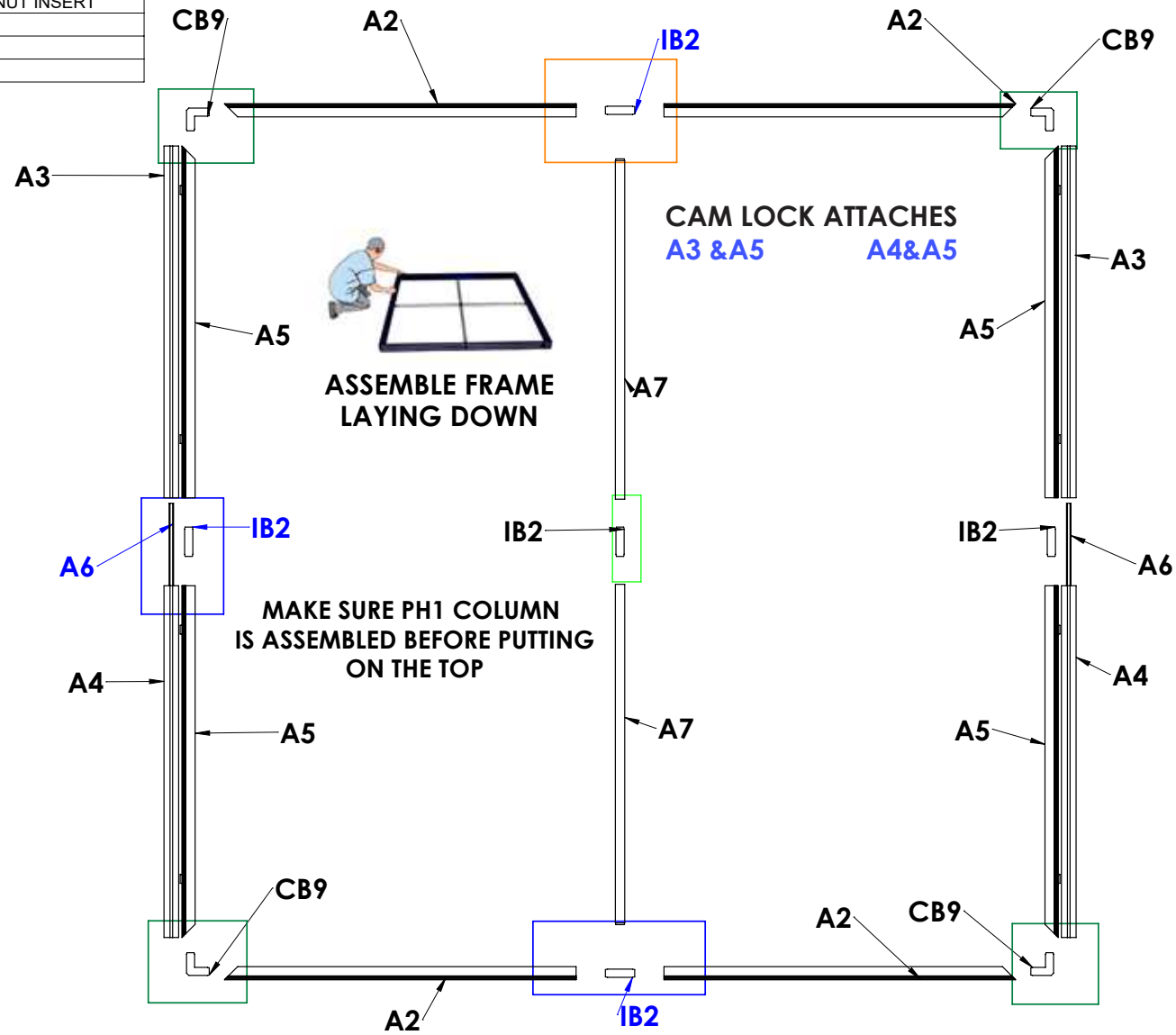
IMPERIAL TO METRIC SIZES

8' Nominal = 94 1/2" or 2400mm Actual
4' Nominal = 47 1/4" or 1200mm Actual
3' Nominal = 35 7/16" or 900mm Actual
2' Nominal = 23 5/8" or 600mm Actual
1' Nominal = 11 13/16" or 300mm Actual

Code	#	Description
A5	4	PHFC4-1200 EXTRUSION-WITH IB2 LOCK HOLE-WITH MITRE CUT FOR CB9-SIDE
A2	4	PHFC4-1200 EXTRUSION-WITH IB2 LOCK HOLE-WITH MITRE CUT FOR CB9
CB9	4	90 DEGREE JOINER
IB2	5	JOINER BAR(NEW DESIGN)
A4	2	1200MM PM4S3-1200 EXTRUSION-WITH STOP AT 165MM-WITH NUT INSERT
A3	2	1200MM PM4S3-1200 EXTRUSION-WITH STOP AT 165MM
A6	2	300MM PH2-TG EXTRUSION
A7	2	1155MM PH1 EXTRUSION-WITH IB2 LOCK HOLE-CAM LOCK



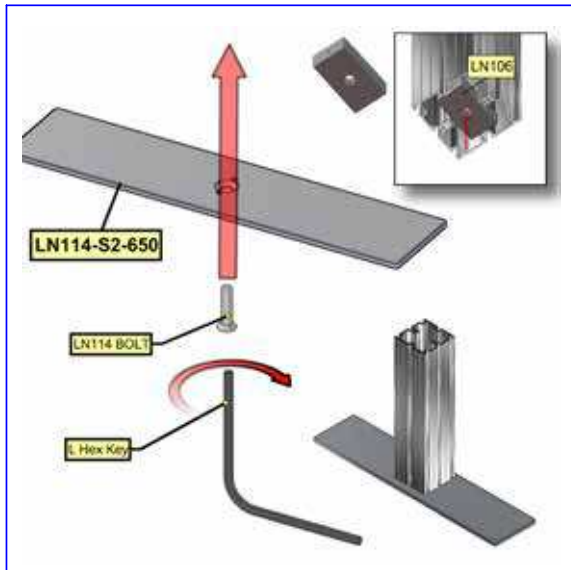
VECTOR FRAME



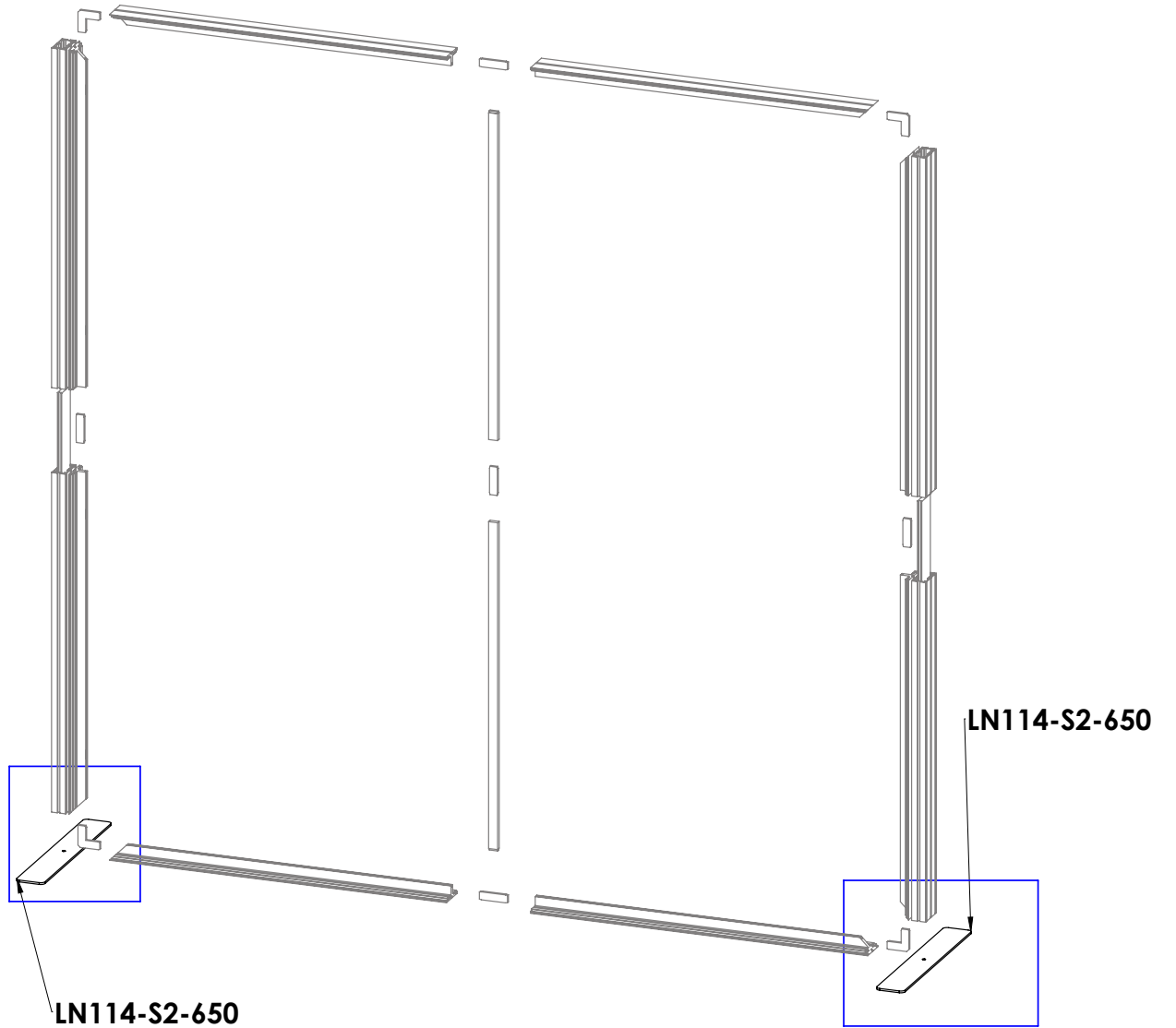
Code	#	Description
LN114-S2-650	2	FOOT PLATE , 650MM LENGTH



INSTALL FEET WHILE THE FRAME IS LAYING DOWN DO NOT STAND UP TILL AFTER GRAPHICS ARE INSTALLED

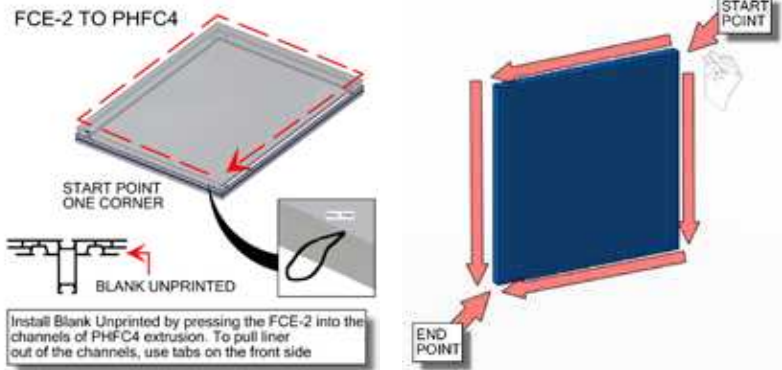
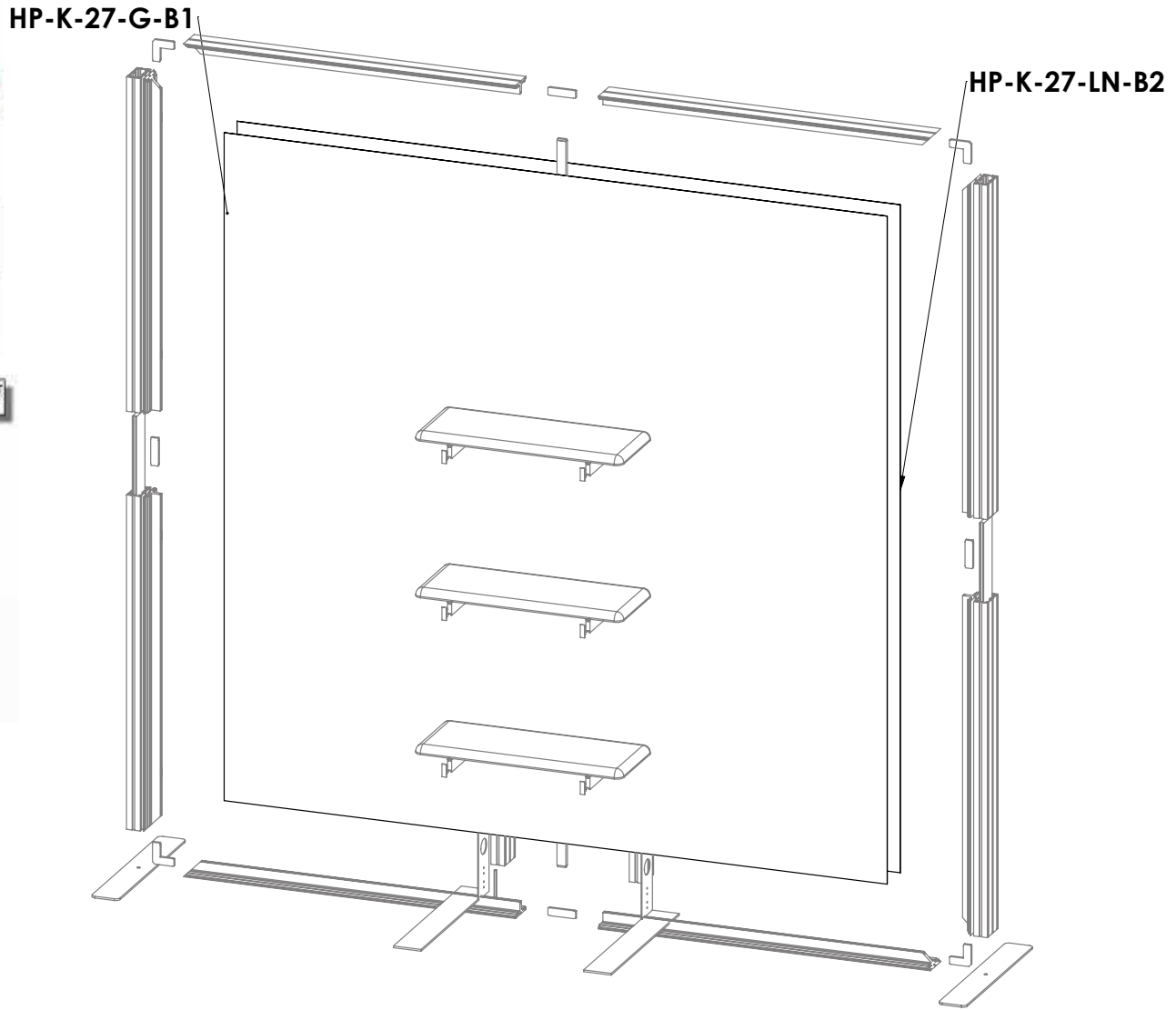
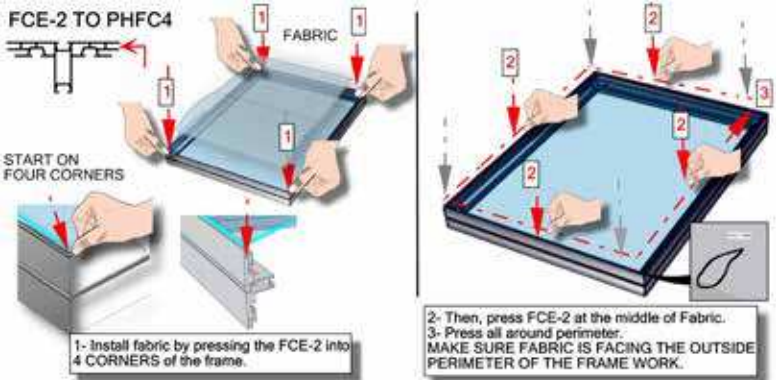


VECTOR FRAME FEET INSTALL



Code	#	Description
HP-K-27-G-B1	1	GRAPHIC(B1) 94.37 w X 94.37 h finished size Dye-sub print on 8oz. Power Stretch, with FCE-2 silicone beading sewn to back perimeter, corner pull sewn in bottom right corner
HP-K-27-LN-B2	1	LINER(B2) 94.37 w X 94.37 h finished size Opaque liner, with FCE-2 silicone beading sewn to back perimeter, corner pull sewn in bottom right corner

GRAPHICS 1



**STAND UP AFTER
THE FRONT
GRAPHIC
IS INSTALLED**



LABELING DIAGRAM FOR HP-K-27-A&B-SQU

SET UP INSTRUCTIONS:

1. CONNECT BOTTOM AND TOP TUBES FOLLOWING THE LABELS
2. CONNECT SIDE TUBES
3. CLEAN THE FRAME AND PLACE THEM ON CLEAN PLACE
4. CAREFULLY REMOVE FABRIC COVER FROM BAG
5. PLACE COVER AROUND THE BOTTOM OF THE FRAME
6. PULL COVER CAREFULLY UP TO THE TOP
7. CLOSE ALL ZIPPERS
8. ADJUST FABRIC AROUND THE FRAME
9. CONNECT CABLE HARNESS TO THE EYEBOLTS
10. COMPLETELY TIGHTEN THREADED CONNECTORS

ZIPPER ON BOTTOM OF BOTH

**HP-K-27-A
HP-K-27-B**



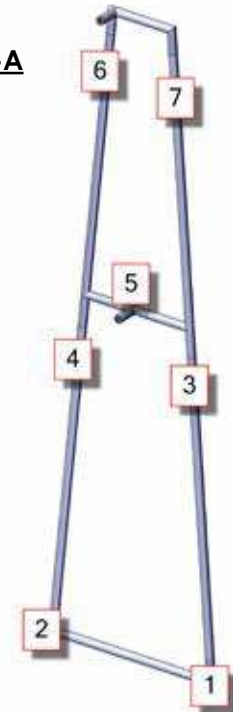
BREAK DOWN INSTRUCTIONS:

REVERSE SET-UP STEPS TO BREAKDOWN FRAME

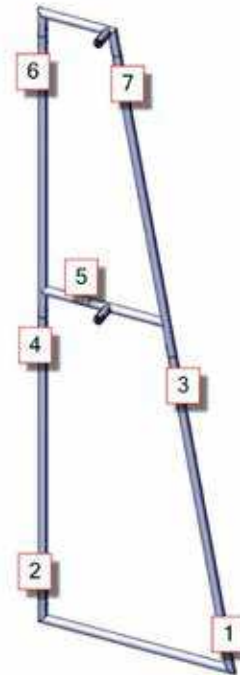
FABRIC CARE INSTRUCTIONS:

1. UNZIP COVER ZIPPERS
2. CAREFULLY REMOVE FABRIC COVER
3. CLOSE ALL ZIPPERS
4. FOLD OR ROLL NEATLY
5. PLACE FABRIC IN COVER BAG

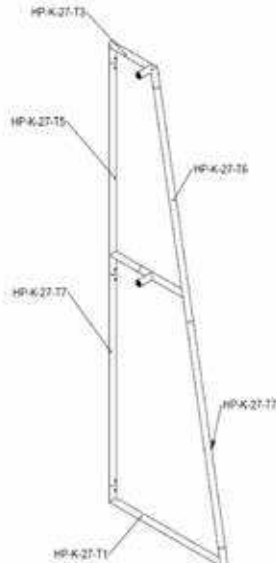
HP-K-27-A



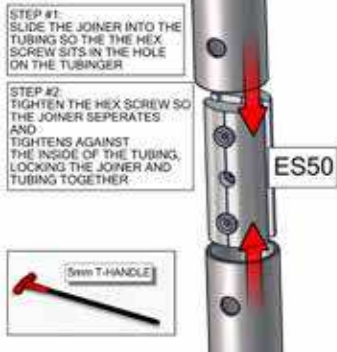
HP-K-27-B



PARTS DIAGRAM



PARTS DIAGRAM



Code	#	Description
CUS-FABSTR-2	1	600MM X 2400MM, 30MM CUSTOM FABRIC STRUCTURE
CUS-G-PS-PC-G	1	GRAPHIC(C1) 23.62 w x 94.50 h Pillowcase Graphic, dye-sub print on 8oz. Power Stretch, single sided, sewn with zipper.
CUS-FABSTR-1	1	600MM X 2400MM, 30MM CUSTOM FABRIC STRUCTURE
CUS-G-PS-PC-G	1	GRAPHIC(A1) 23.62 w x 94.50 h Pillowcase Graphic, dye-sub print on 8oz. Power Stretch, single sided, sewn with zipper.

FABRIC STRUCTURE GRAPHICS

HAVE TWO PEOPLE HELP WHILE YOU INSTALL THE FABRIC STRUCTURE

