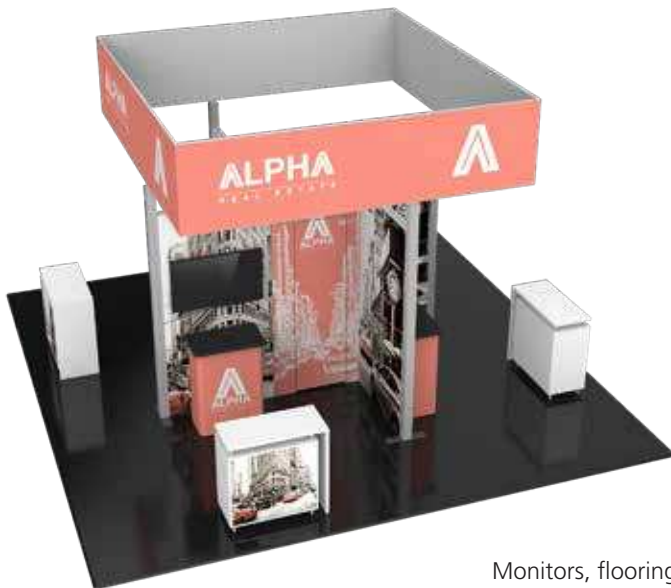


Hbrid Pro 20x20 Modular Island Kit 26

HP-K-26

Hybrid Pro™ Modular Kit 26 is a simple, yet stylish modular 20ft x 20ft island exhibit, ideal for services and software demonstrations. Kit 26 features a heavy-duty aluminum extrusion center frame that supports a 12ft wide by 3ft high square-shaped fabric structure.

The top fabric structure is a tube structure with pillowcase fabric graphics and is meant to display your company logo so all in the exhibit hall can see it from afar! In the center of the display is a storage closet, perfect to store promotional items, personal belongings, equipment and more. This modular exhibit incorporates four back-to-back displays designed to provide an areas for semi-private demonstrations. The four display sections include medium monitor mounts for multimedia and counters for reception and storage. This modular booth was designed with a software company in mind!



Monitors, flooring and foreground counters not included

features and benefits:

- 12'6" tall island display
- No rigging required
- Features 12'w x 3'h square fabric structure up high to draw visitors to the booth
- Four sections / floor-based displays feature push-fit fabric graphics, medium monitor

- Four counters near backwalls offer storage space and a shelf
 - Center closet offers lockable storage
 - Ships freight
 - Medium monitor bracket on center wall holds 32-55" LCD*, max weight: 80 lbs
- *Monitors, flooring and foreground counters not included"

dimensions:

Hardware

Assembled unit:
146.22"w x 143.41"h x 168"d
3713.99mm(w) x 3642.62mm(h) x 4267.2mm(d)

Approximate weight:
1672lbs / 758.41 kg

Graphic

Refer to related graphic template for more information.

Shipping

Packing case(s):
NCRATE,4 OCH2

Shipping dimensions:

NCRATE
60"w x 57"h x 48"d
1524mm(w) x 1448mm(h) x 1220mm(d)

OCH2:
52"l x 29"h x 15"d
1321mm(l) x 737mm(h) x 381mm(d)

Approximate total shipping weight:
2017 lbs / 915kg

additional information:

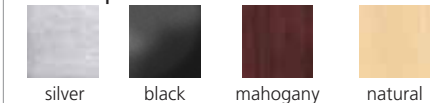
Graphic material:
Dye-sublimation zipper pillowcase fabric
Dye-sublimation SEG push-fit fabric

When included in a larger kit, a different packaging solution will be listed to accommodate all contents of the kit. Individual packaging no longer provided.

Panel Colors:



Tabletop Colors:



4 person assembly recommended:

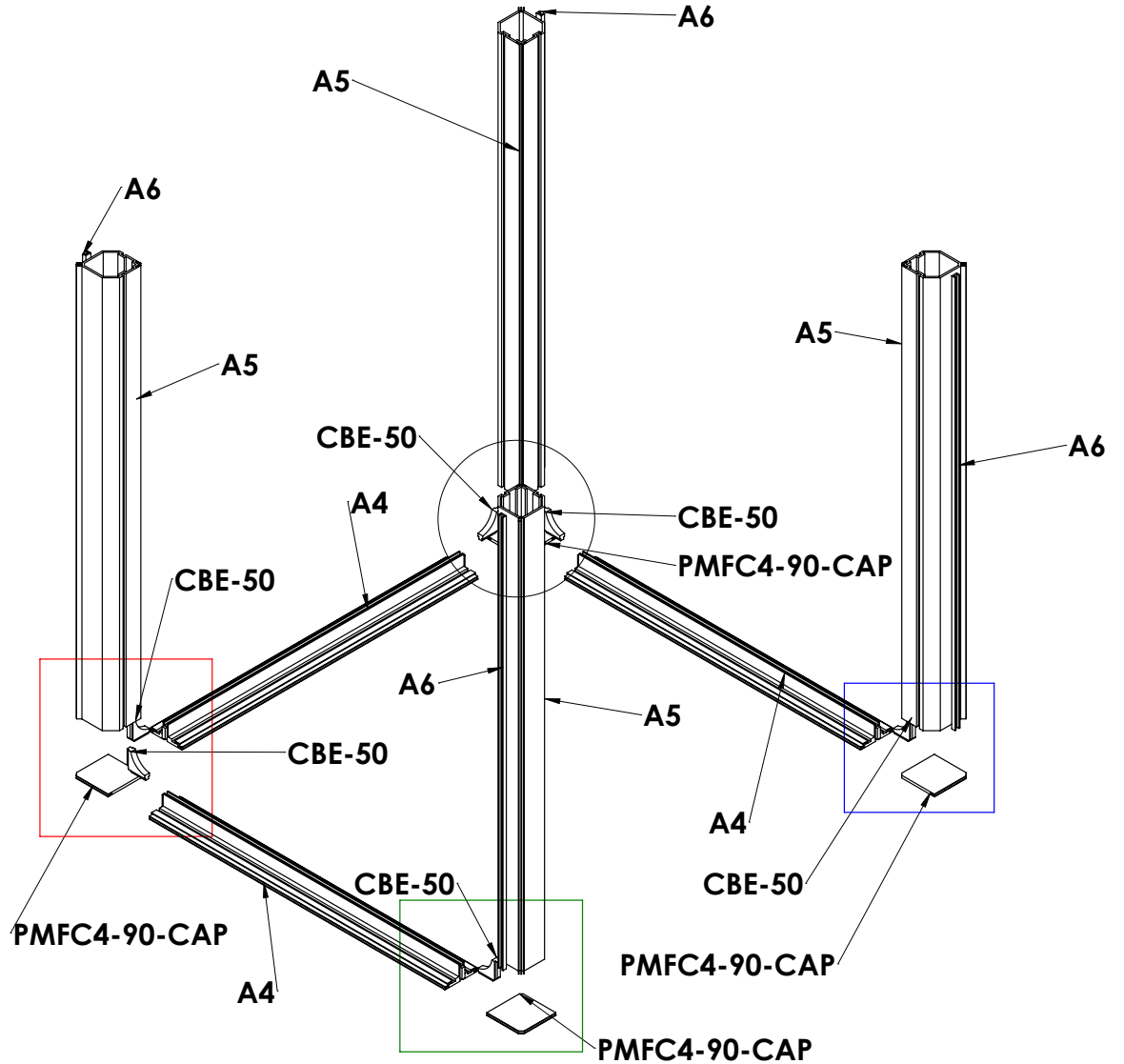
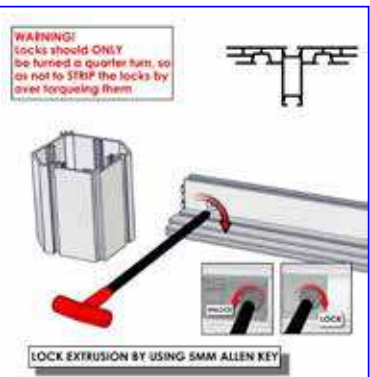
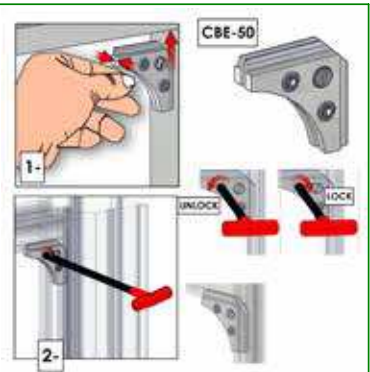
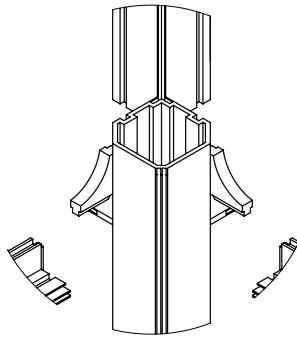


Code	#	Description
CBE-50	6	CORNER PRESSURE FIT CONNECTOR
PMFC4-90-CAP	4	INJECTION MOLDED PLASTIC END CAP FOR PMFC4-90
A5	4	1193MM LENGTH OF PMFC4-90 EXTRUSION-WITH STOP AT 315MM
A4	3	PHFC4-900 EXTRUSION-WITH CAM LOCKS-WITH CAM LOCKS
A6	4	1193MM CUT DOWN FROM 1200MM LENGTH OF PE EXTRUSION

BASE OF STORAGE CLOSET



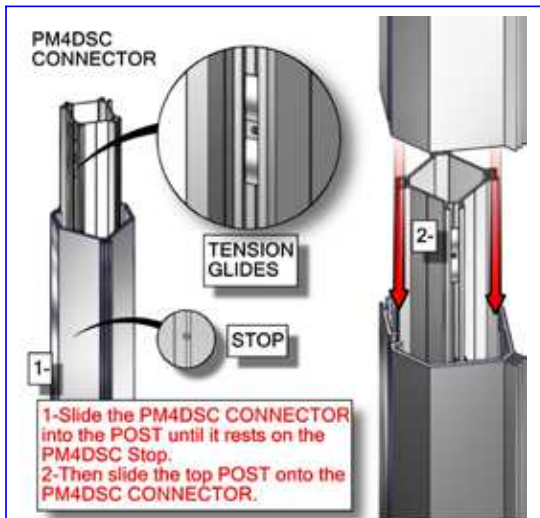
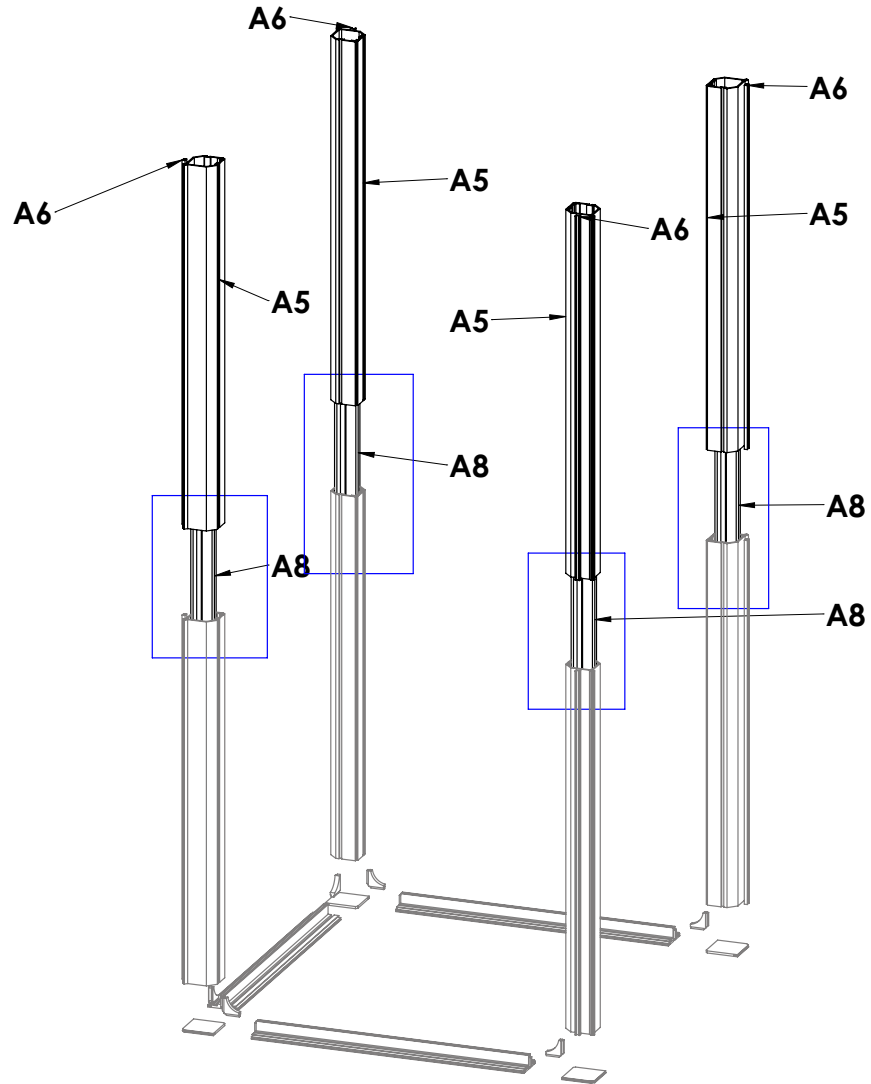
PE AND PMFC4-90 ARE ATTACHED TO EACH OTHER



Code	#	Description
A8	4	PM4DSC-600 - 600MM 4-WAY INTERNAL CONNECTION EXTRUSION W/ 8 TENSION GLIDE
A5	4	1193MM LENGTH OF PMF4-90 EXTRUSION"
A6	4	1193MM CUT DOWN FROM 1200MM LENGTH OF PE EXTRUSION

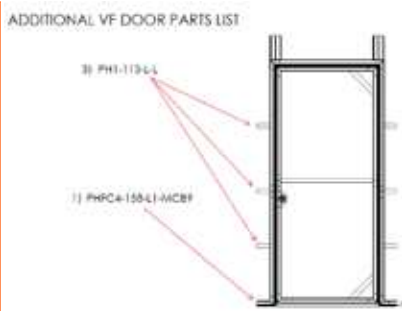
MID LEVEL STORAGE CLOSET

PE AND PMFC4-90 ARE ATTACHED TO EACH OTHER

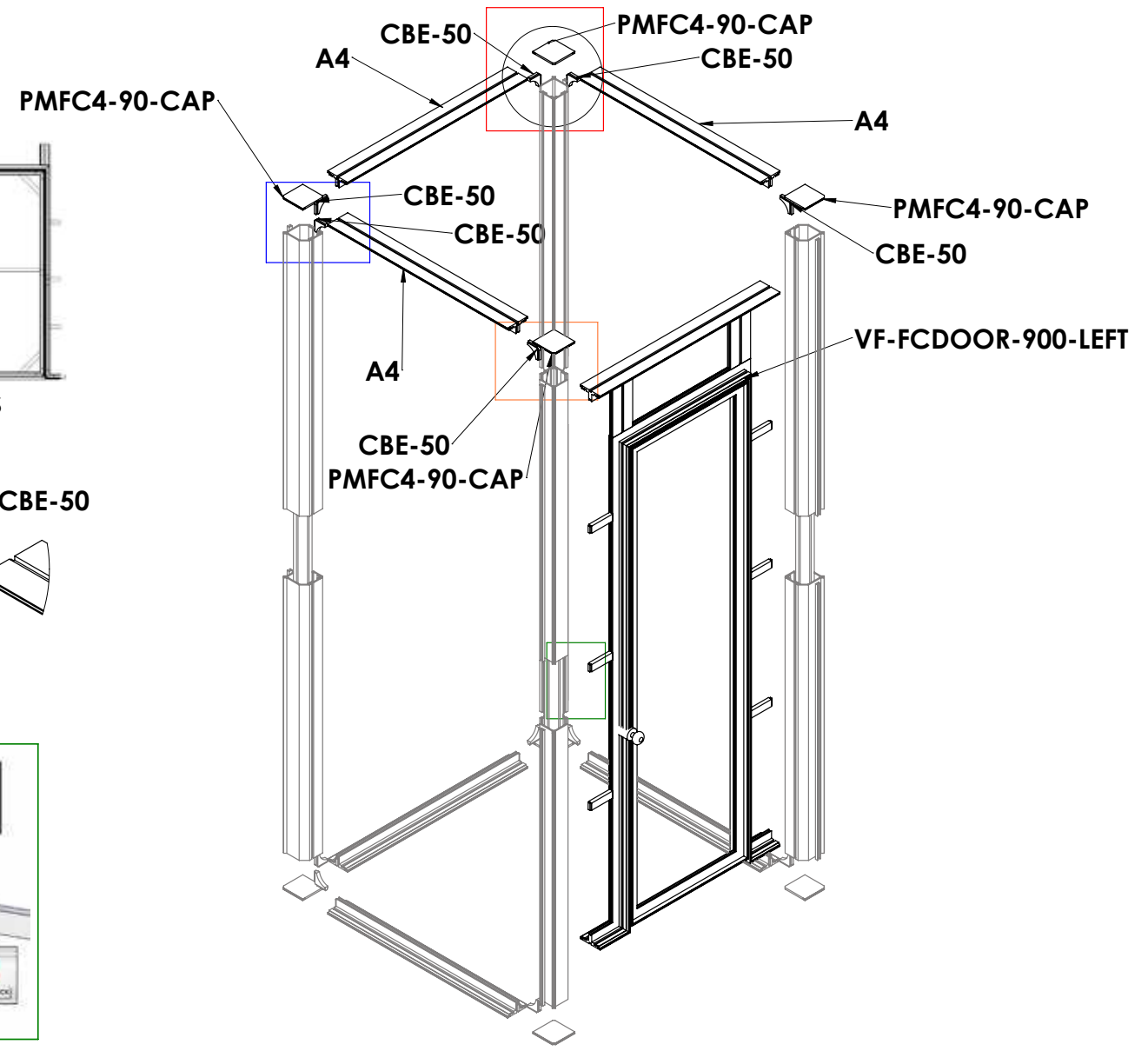
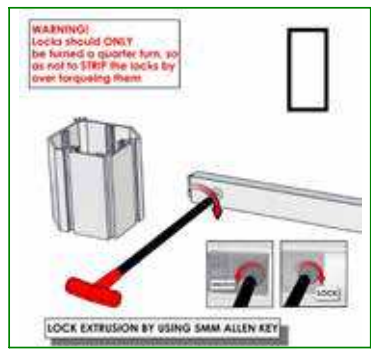
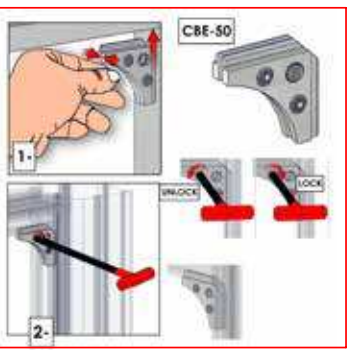
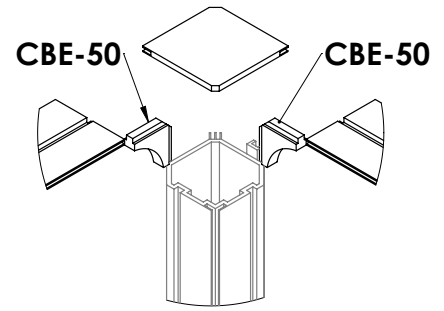
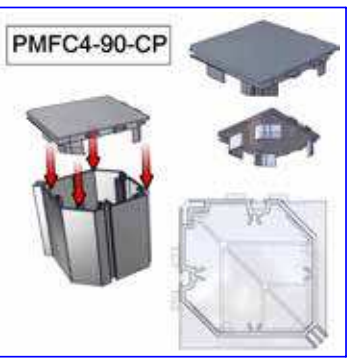


Code	#	Description
PMFC4-90-CAP	4	INJECTION MOLDED PLASTIC END CAP FOR PMFC4-90
A4	3	PHFC4-900 EXTRUSION-WITH CAM LOCKS-WITH CAM LOCKS
CBE-50	6	CORNER PRESSURE FIT CONNECTOR
VF-FCDOOR-900-LEFT	1	VECTOR FRAME FABRIC CHANNEL DOOR, 900MM W X 2400MM H FRAME, LEFT

TOP OF STORAGE CLOSET



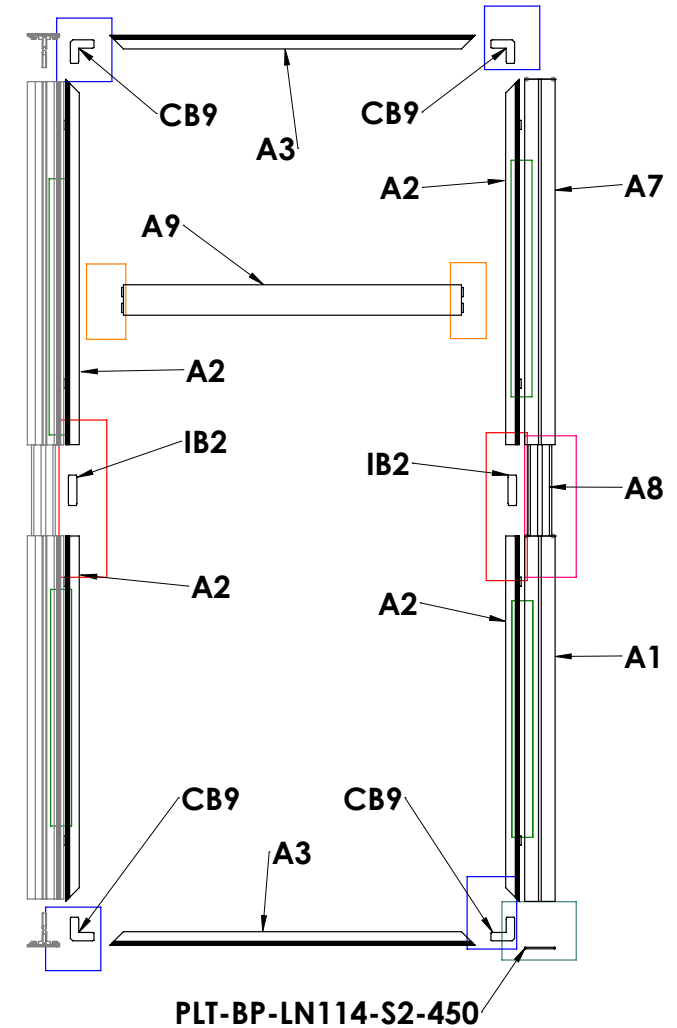
THE DOOR COMES PREASSEMBLED



Code	#	Description
A2	4	PHFC4-1200 EXTRUSION-WITH IB2 LOCK HOLE-WITH MITRE CUT FOR CB9-SIDE
A3	2	PHFC4-1200 EXTRUSION-WITH MITRE CUT FOR CB9-WITH MITRE CUT FOR CB9
IB2	2	JOINER BAR(NEW DESIGN)
CB9	4	90 DEGREE JOINER
PLT-BP-LN114-S2-450	1	LINEAR FOOT WITH COUNTERSUNK HOLES, NIKE HAMMERTONE SILVER
A8	1	PM4DSC-600 - 600MM 4-WAY INTERNAL CONNECTION EXTRUSION W/ 8 TENSION GLIDE
A1	1	1200MM PM4S2-1200 EXTRUSION-WITH STOP AT 315MM-WITH NUT INSERT
A9	1	1110MM CUT DOWN FROM 1000MM LENGTH OF PS2 EXTRUSION-WITH CAM LOCKS-WITH CAM LOCKS
A7	1	1200MM PM4S2-1200 EXTRUSION-WITH STOP AT 315MM-WITH STOP AT 315MM

VECTOR FRAM SIDEWALL X 4

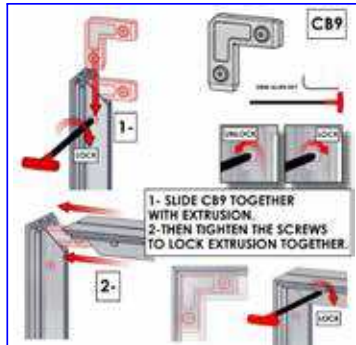
REPEAT FOR THE OTHER THREE WALLS



ADD BOLT FOR
MONITOR MOUNT
INTO THE PS2

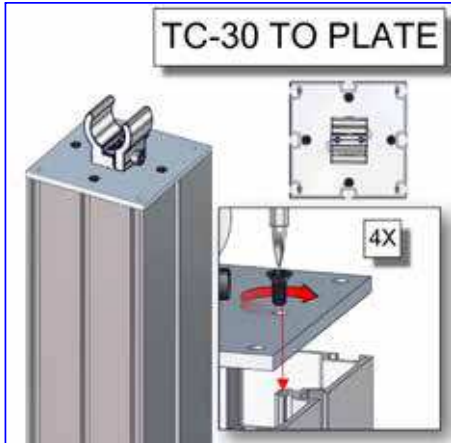


ASSEMBLE FRAME
LAYING DOWN
ATTACH TO CLOSET
AFTER STANDING UP

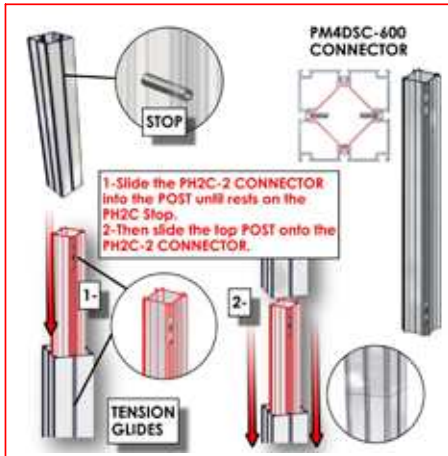
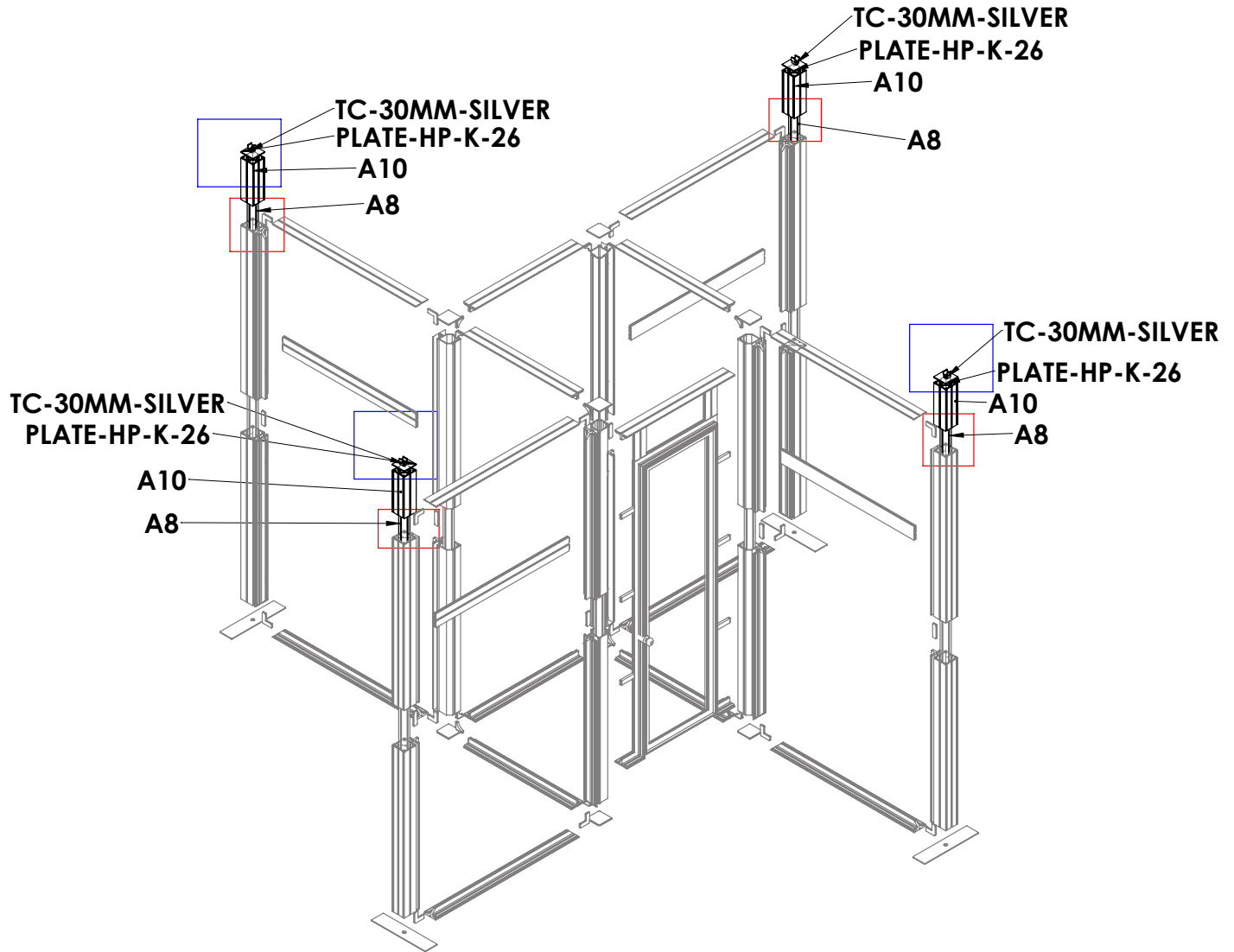


Code	#	Description
A10	4	300MM PM4S2-300 EXTRUSION-WITH NUT INSERT-WITH STOP AT 315MM
PLATE-HP-K-26	4	100MM X 100MM FABRIC STRUCTURE CONNECTION PLATE
A8	4	PM4DSC-600 - 600MM 4-WAY INTERNAL CONNECTION EXTRUSION W/ 8 TENSION GLIDE
TC-30MM-SILVER	4	30MM SILVER ANODIZED TUBE CLAMP

SQUARE FRAME SUPPORT

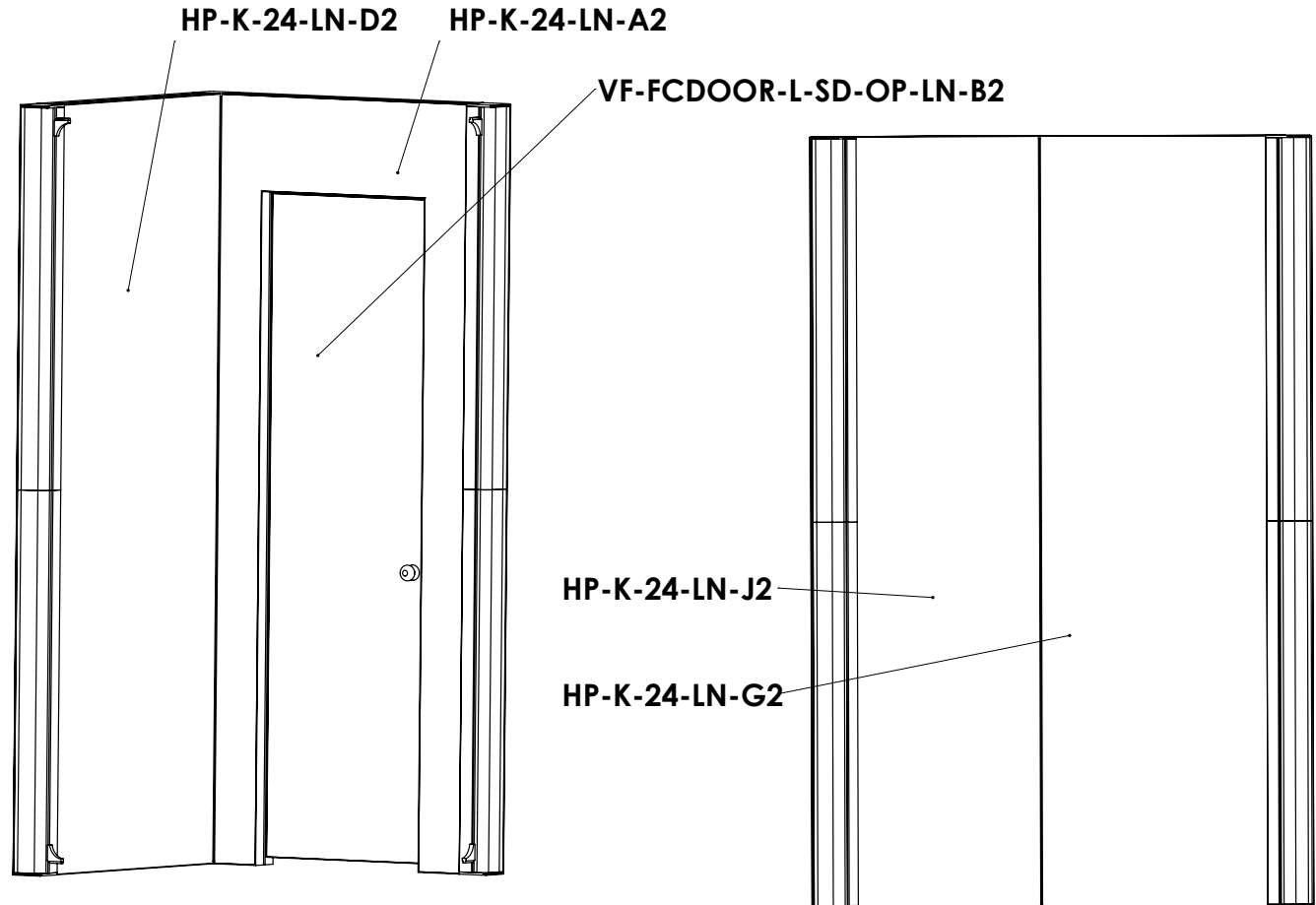
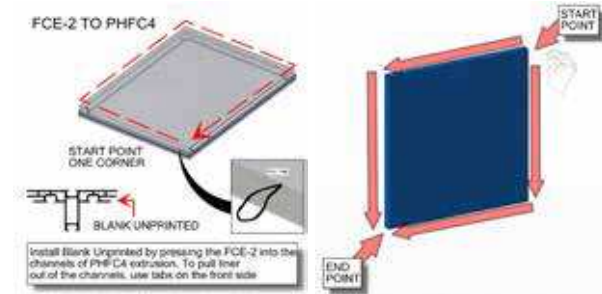
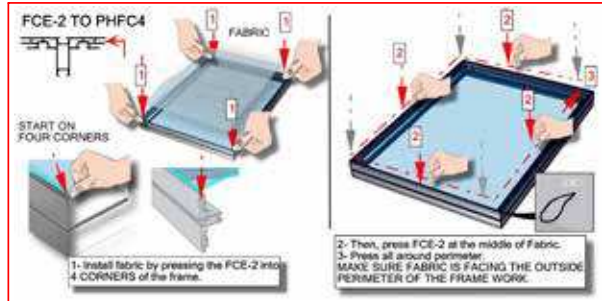
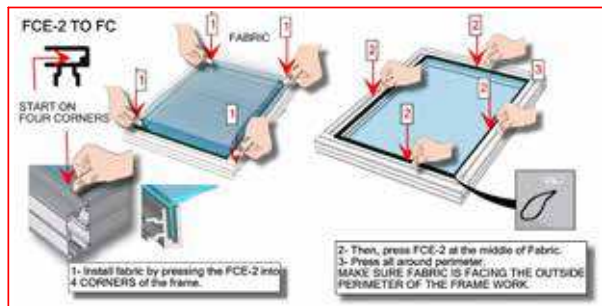


ATTACH TC30 TO PM4S2 BEFORE ATTACHING IT TO THE MAIN FRAME



GRAPHICS/LINER

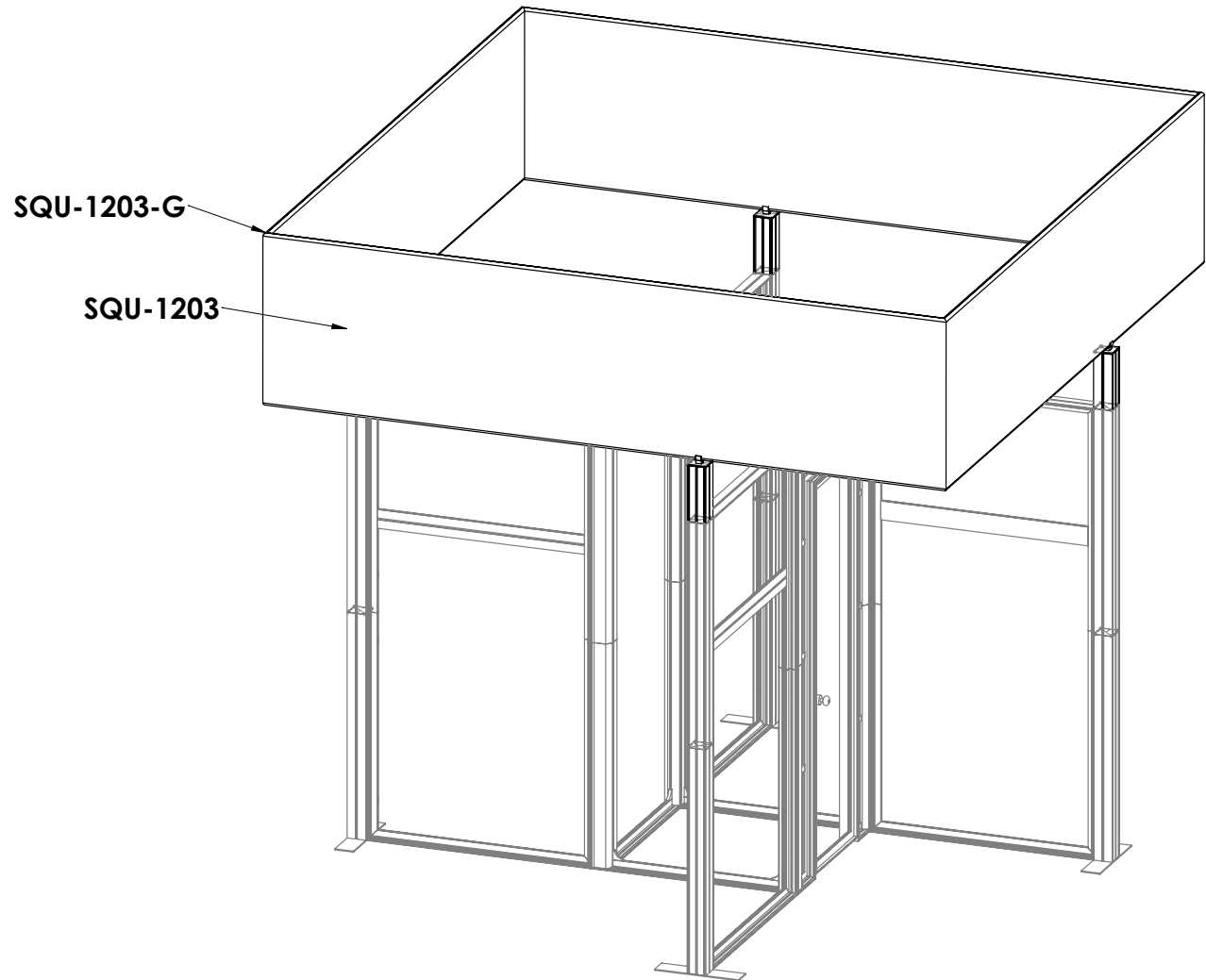
Code	#	Description
HP-K-24-LN-G2	1	LINER(G2) 35.55 w X 94.37 h finished size Opaque liner, with FCE-2 silicone beading sewn to back perimeter, corner pull sewn in bottom right corner
VF-FCDOOR-L-SD-OP-LN-B	1	LINER(B2) 22.95" (583MM) W X 81.38" (2067MM) H Visual Size Opaque Liner, with FCE-2 silicone beading sewn to back perimeter, corner pull sewn in bottom right corner.
HP-K-24-LN-A2	1	LINER(A2) 35.59" X 94.33" Opaque Liner, with FCE-2 silicone beading sewn to back perimeter, corner pull sewn in bottom right corner.
HP-K-24-LN-D2	1	LINER(D2) 35.55 w X 94.37 h finished size Opaque liner, with FCE-2 silicone beading sewn to back perimeter, corner pull sewn in bottom right corner
HP-K-24-LN-J2	1	LINER(J2) 35.55 w X 94.37 h finished size Opaque liner, with FCE-2 silicone beading sewn to back perimeter, corner pull sewn in bottom right corner



Code	#	Description
SQU-1203	1	12'W X 3'H HANGING SQUARE STRUCTURE HARDWARE
SQU-1203-G	1	GRAPHIC(S1) 12'W X 3'H HANGING SQUARE STRUCTURE SINGLE SIDED GRAPHIC

SQUARE FRAME & GRAPHICS

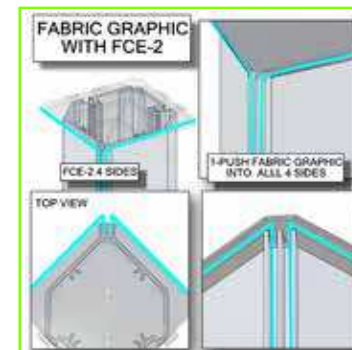
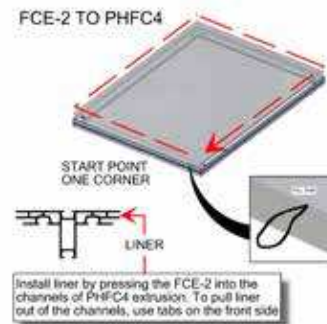
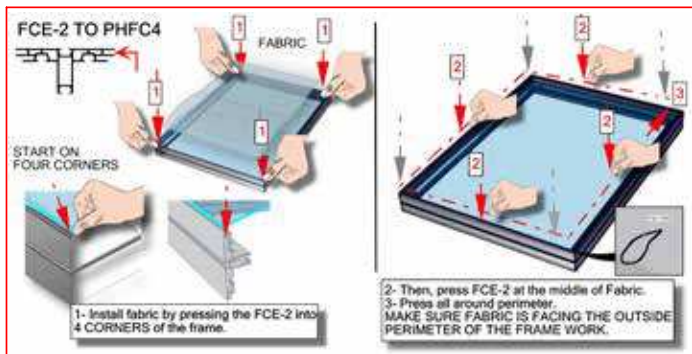
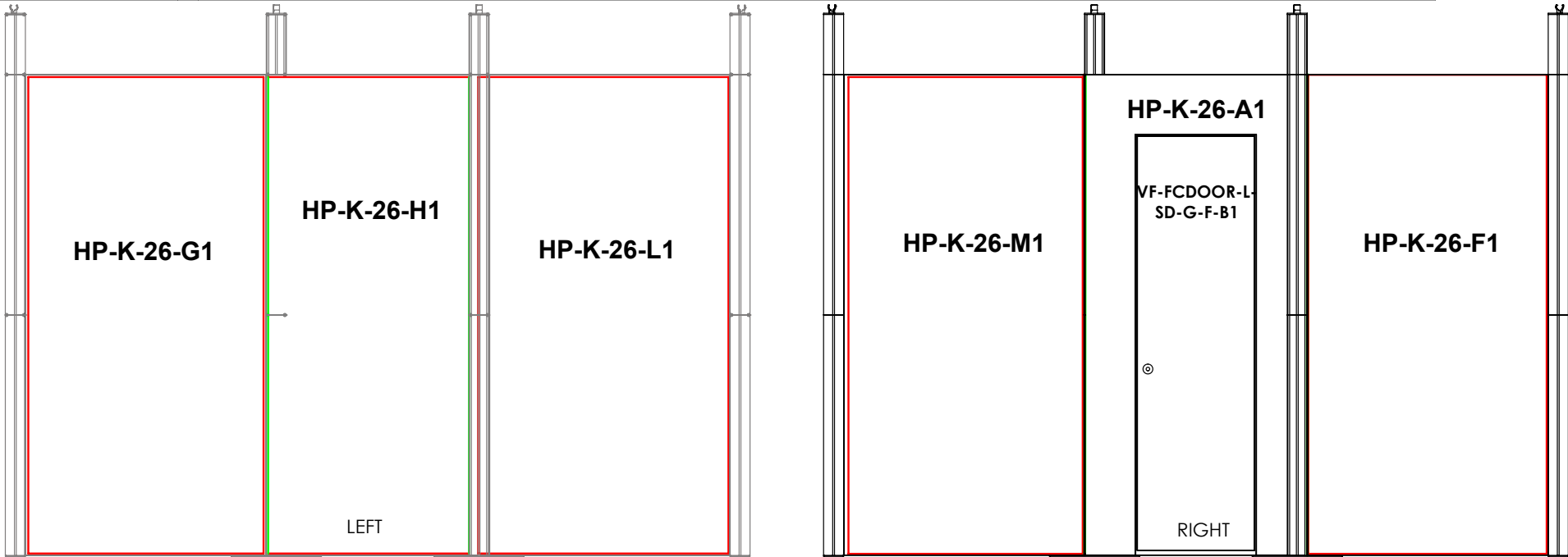
**ATTACH GRAPHIC BEFORE LIFTING
AND CLIPPING IN PLACE
HAVE THREE OR MORE PEOPLE
HELP WITH THIS STEP**



GRAPHICS1

**ATTACH GRAPHICS
WHILE
THE FRAME IS
STANDING UP**

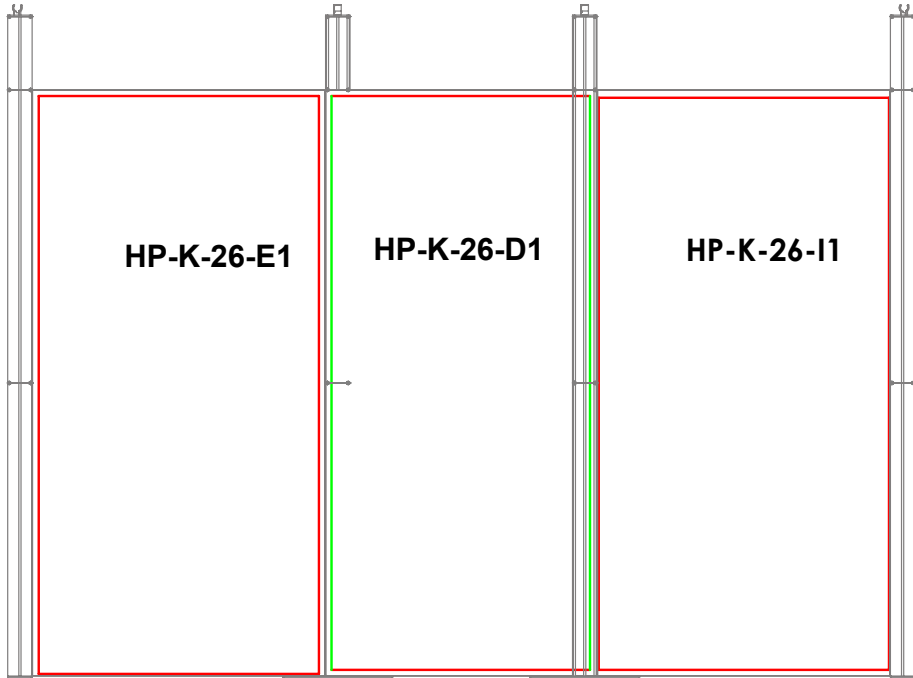
Code	#	Description
HP-K-26-G-F1	1	GRAPHIC(F1) 47.13 w X 94.37 h finished size Dye-sub print on 8oz. Power Stretch, with FCE-2 silicone beading sewn to back perimeter, corner pull sewn in bottom right corner
HP-K-26-G-G1	1	GRAPHIC(G1) 47.13 w X 94.37 h finished size Dye-sub print on 8oz. Power Stretch, with FCE-2 silicone beading sewn to back perimeter, corner pull sewn in bottom right corner
HP-K-26-G-M1	1	GRAPHIC(M1) 47.13 w X 94.37 h finished size Dye-sub print on 8oz. Power Stretch, with FCE-2 silicone beading sewn to back perimeter, corner pull sewn in bottom right corner
HP-K-26-G-L1	1	GRAPHIC(L1) 47.13 w X 94.37 h finished size Dye-sub print on 8oz. Power Stretch, with FCE-2 silicone beading sewn to back perimeter, corner pull sewn in bottom right corner
VF-FCDOOR-L-SD-G-F	1	GRAPHIC(B1) (FRONT DOOR) 22.95" (583MM) W X 81.38" (2067MM) H Visual Size Dye Sub Print On Power Stretch, with FCE-2 silicone beading sewn to back perimeter, corner pull sewn in bottom right corner.
HP-K-26-G-A1	1	GRAPHIC(A1) (FRONT) 43.77" X 94.33" Power Stretch, Custom Silicone Edge Graphic, with FCE-2 silicone beading sewn to back perimeter, corner pull sewn in bottom right corner.
HP-K-26-G-H1	1	GRAPHIC(H1) 43.66 w X 94.37 h finished size Dye-sub print on 8oz. Power Stretch, with FCE-2 silicone beading sewn to back perimeter, corner pull sewn in bottom right corner



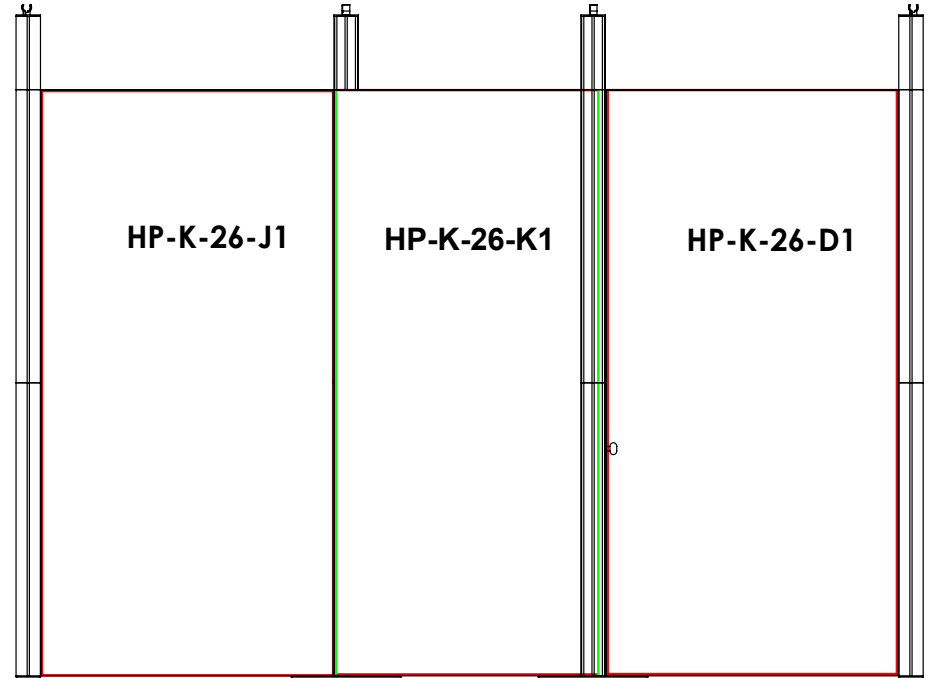
Code	#	Description
HP-K-26-D1	1	GRAPHIC(D1) 47.13 w X 94.37 h finished size Dye-sub print on 8oz. Power Stretch, with FCE-2 silicone beading sewn to back perimeter, corner pull sewn in bottom right corner
HP-K-26-E1	1	GRAPHIC(E1) 47.13 w X 94.37 h finished size Dye-sub print on 8oz. Power Stretch, with FCE-2 silicone beading sewn to back perimeter, corner pull sewn in bottom right corner
HP-K-26-J1	1	GRAPHIC(J1) 47.13 w X 94.37 h finished size Dye-sub print on 8oz. Power Stretch, with FCE-2 silicone beading sewn to back perimeter, corner pull sewn in bottom right corner
HP-K-26-G-I1	1	GRAPHIC(I1) 47.13 w X 94.37 h finished size Dye-sub print on 8oz. Power Stretch, with FCE-2 silicone beading sewn to back perimeter, corner pull sewn in bottom right corner
HP-K-26-G-K1	1	GRAPHIC(K1) 43.66 w X 94.37 h finished size Dye-sub print on 8oz. Power Stretch, with FCE-2 silicone beading sewn to back perimeter, corner pull sewn in bottom right corner
CUS-G-PS-SEG	1	GRAPHIC(D1) 43.66 w X 94.37 h finished size Dye-sub print on 8oz. Power Stretch, with FCE-2 silicone beading sewn to back perimeter, corner pull sewn in bottom right corner

GRAPHICS2

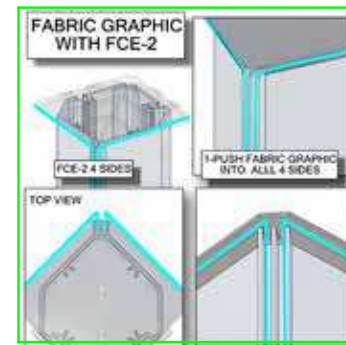
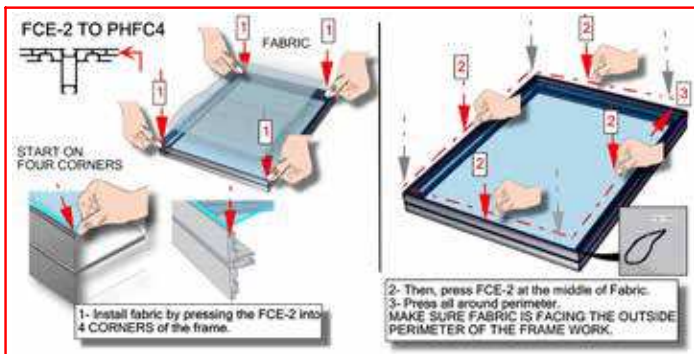
**ATTACH GRAPHICS
WHILE
THE FRAME IS
STANDING UP**



BACK



FRONT



Code	#	Description
EXT-M-MB	4	EXTRUSION MOUNTED MEDIUM MONITOR BRACKET AND MOUNTING HARDWARE

MONITOR MOUNT

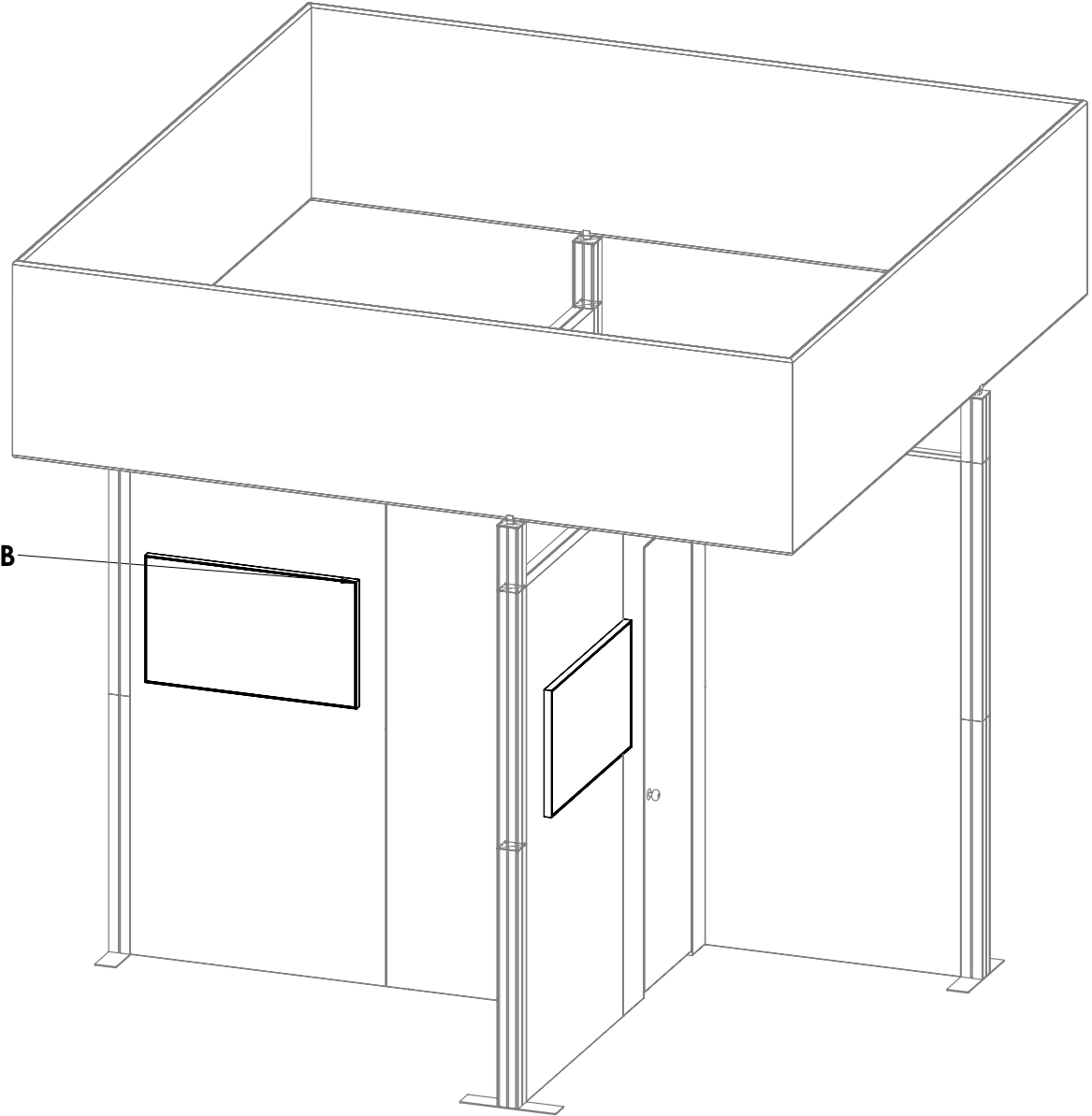
**MEDIUM
MONITOR MOUNT**



1- INSERT BOLTS INTO
PROPER CHANNEL,
THEN SECURE MONITOR
MOUNT WITH WASHER
& WING NUT.

2- ATTACH MONITOR
TO BRACKETS SEE
NB MANUAL FOR
MORE INFO

**ATTACH THE MOUNT
TO THE BOLTS IT THE PS2
ON THE SIDE WALLS**



Vector Frame Counter 04

VFC-04





Vector Frame™ counters compliment the Vector Frame series of exhibit kits, but are also ideal for any stand-alone event or display. Vector Frame counters couple simple extrusion-based frames with push-fit graphics or rigid sintra graphics. Countertops are available in four colored finishes. Custom sizes also available.



features and benefits:

- Feature push-fit fabric graphics and simple extrusion based frames
- Choose from four countertop finishes
- Easy step-by-step instructions
- Wheeled portable shipping case
- Lifetime limited warranty against manufacturer defects

dimensions:

Hardware	Graphic
<p>Assembled unit: 31" w x 40.5" h x 19" d 1400mm(w) x 1029mm(h) x 572mm(d)</p> <p>Approximate unit weight: 52 lbs / 24 kgs</p>	Refer to related graphic template for more information
Shipping	
<p>Packing case(s) 1 OCH2</p> <p>Shipping dimensions: 52" l x 29" h x 15" d 1321mm(l) x 737mm(h) x 381mm(d)</p> <p>Approximate shipping weight: 82 lbs / 37 kgs</p>	
additional information:	
<p>Graphic material: Dye-sublimated fabric</p> <p>Counter holds max weight 100 lbs / 46 kgs</p>	
<p>Tabletop Colors:</p> <div style="display: flex; justify-content: space-around; align-items: center;"> <div style="text-align: center;">  silver </div> <div style="text-align: center;">  black </div> <div style="text-align: center;">  mahogany </div> <div style="text-align: center;">  natural </div> </div>	

Included In Your Kit

Tools, Components, & Connectors



5MM ALLEN-T x1



CB10-R x8



PMFC2-90-CAP x4



PMFC2-90-986-L1-L1 x2



PHFC2-600-L-L x2



PHFC2-300-L-L x4



TUBE-30-910 x4



PHFC2-100-L-L x4



VFC-04-CT-S x1



VFC-04-CT x1

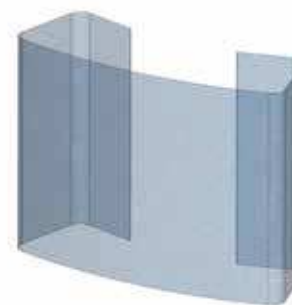


PE-1000 x2



PH1-288-L-L x4

Graphics



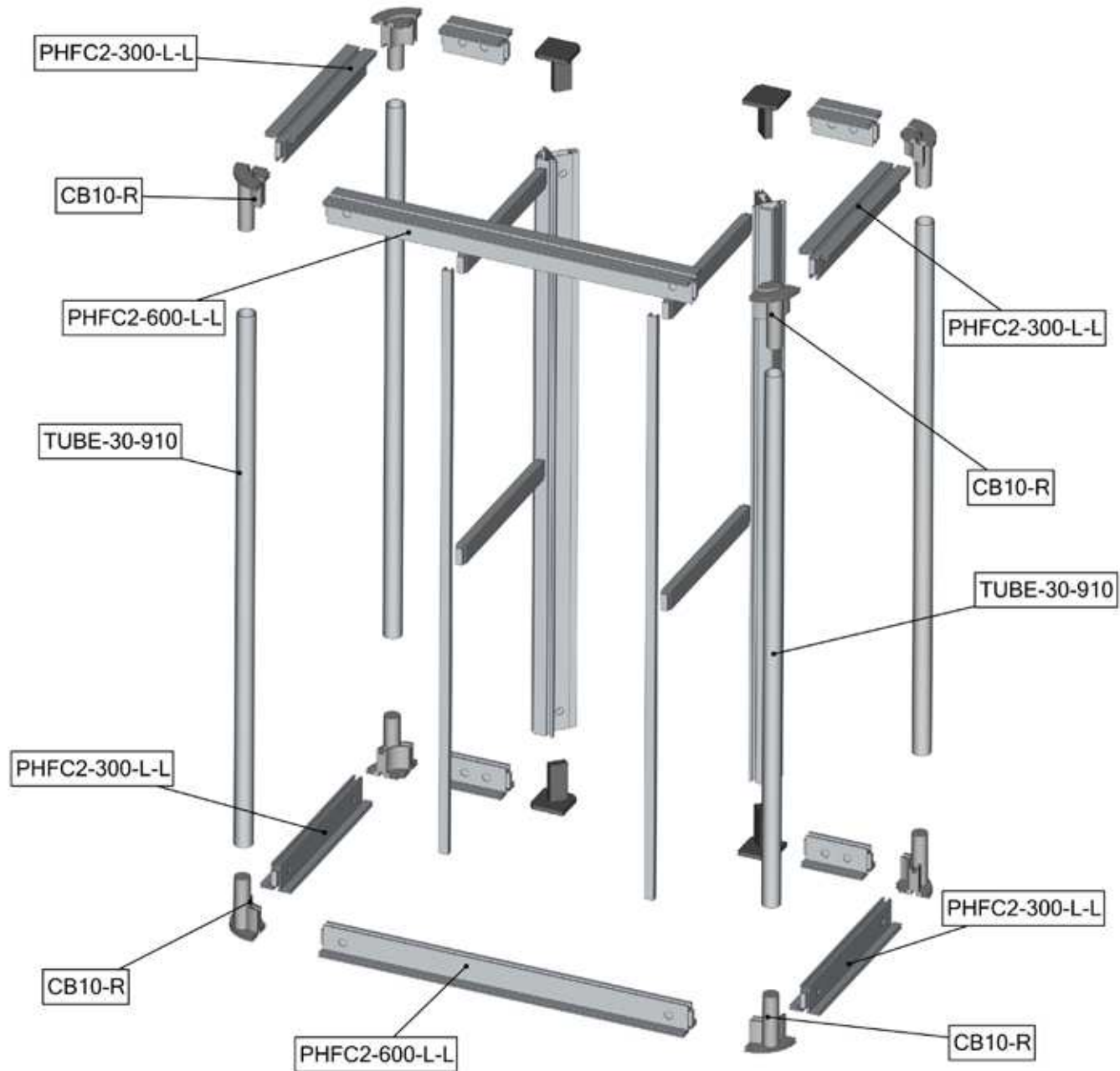
VFC-04-A-G x1



VFC-04-B-G x1

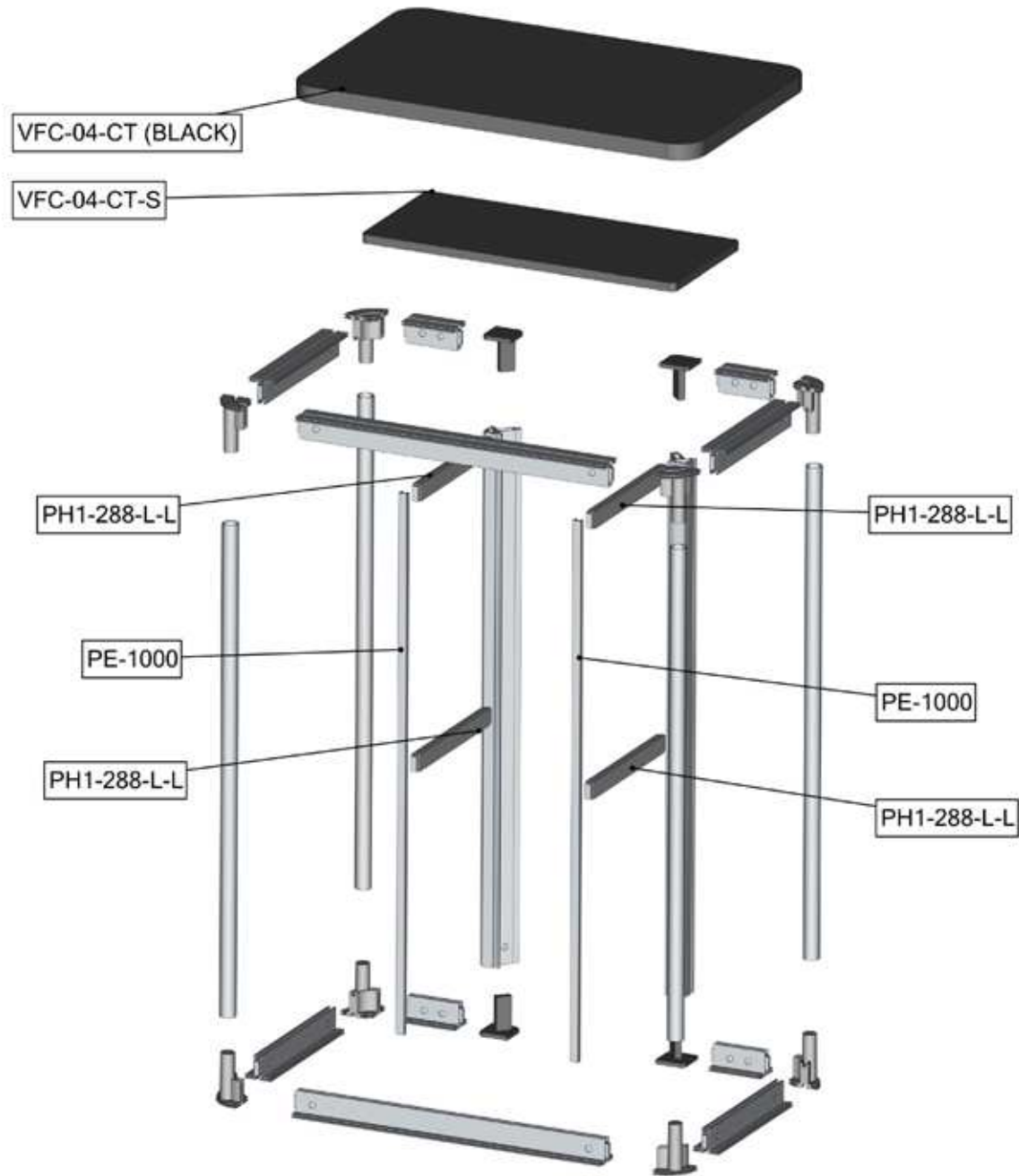
Exploded View

VFC-04
Section 1



Exploded View

VFC-04
Section 3



Connection Methods

Connection Method 1: PMFC2-90-CAP



First, press button to insert the cap into the extrusion. The button will snap in place.

Connection Method 2: PMFC2 / PHFC2



First, with the cam lock disengaged, place the cam lock teeth into the extrusion channel. Second, use the allen key tool to lock it in place. Make half turns clock-wise to engage the cam lock. Do not over tighten the lock buttons.

Connection Method 3: CB10-R / PHFC2



First, press and hold the snap button while you slide it into the tube. The snap button connection is secure when it protrudes through the tube hole. Second, using the allen key tool, disengage the cam lock in the extrusion end and place its teeth into the CB10-R channel. Third, with the cam lock teeth in the channel, use the allen key tool to engage the cam lock. Make a half turn to lock, do not over tighten. Repeat for opposite end.

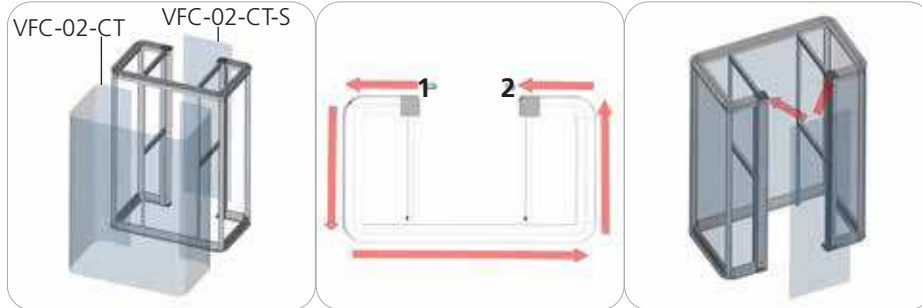
Connection Method 4: CAM LOCK / PE



First, with the cam lock disengaged, place the cam lock teeth into the extrusion channel. Second, use the allen key tool to lock it in place. Make half turns clock-wise to engage the cam lock. Do not over tighten the lock buttons.

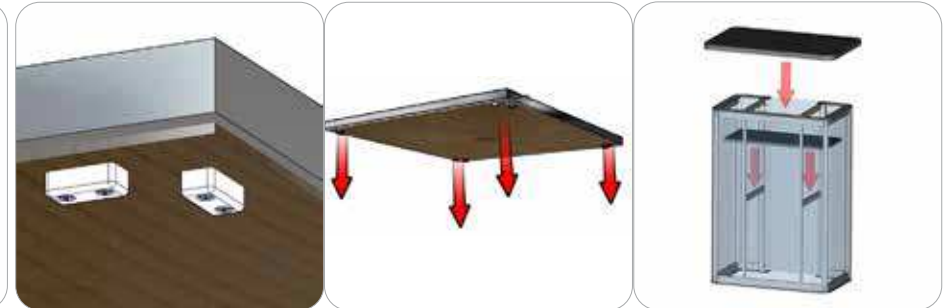
Connection Methods

Connection Method 5: Silicon Edge (SEG)



First, at START point 1, start pressing VFC-04-A-G fabric SEG from top to bottom of the counter fabric channels. Second, work the SEG across the rest of the top and bottom counter fabric channels to END point 2. At END point 2, start pressing the fabric SEG from top to bottom of the counter fabric channel. Third, apply VFC-04-B-G fabric SEG from top to bottom of the counter fabric channels.

Connection Method 6: Counter Top



Counter top is held into place by the blocks seen about.

Kit Assembly

Step by Step

Step 1.

Gather the components to build the counter frame sections 1 and 2. Use the Exploded View section 1 and 2 for part labels.

Reference Connection Method(s) 1, 2 and 3 for more details.



Step 2.

Gather the components to build the counter frame section 3. Use the Exploded View section 3 for part labels. Use section 3 to merge sections 1 and 2.

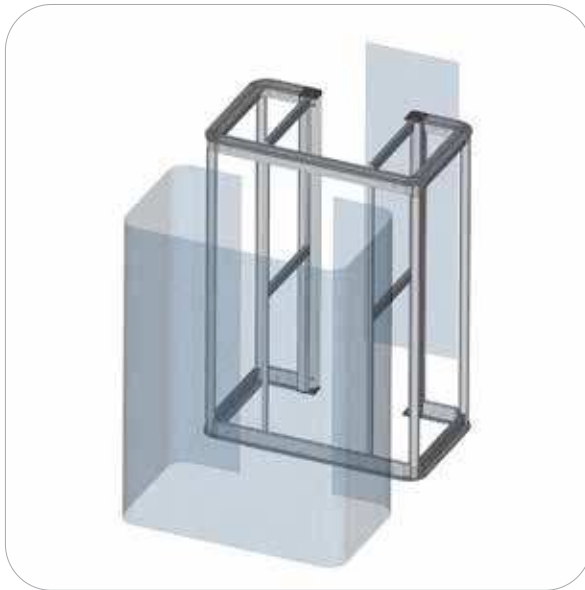
Reference Connection Method(s) 2, 3 and 4 for more details.



Step 3.

Apply the counter fabric graphics by pressing the edges of the graphic into the extrusion fabric channel.

Reference Connection Method 5 for more details.



Step 4.

Gather the components to build the counter top and shelf. Use the Exploded View section 3 for part labels.

Reference Connection Method 6 for more details.

Setup is complete.

