

Hybrid Pro 10FT Modular Backwall Kit 24

HP-K-24

Hybrid Pro™ Modular Kit 24 is a stylish and functional modular exhibit that offers a locked storage closet, ample real estate for branding, as well a display counter and multi-media display. This exhibit kit has it all! Push-fit SEG fabric graphics are coupled with extrusion frames for a seamless, sleek look.



Hybrid pro countre are optional not incncluded at base price

features and benefits:

- Silver aluminum extrusion frames (4)
- SEG push-fit fabric graphics (4)
- Locked storgage closet with fabric graphics
- Backwall counter color options: Silver, Black, Mahogany, Natural
- Medium monitor bracket holds 32-55" LCD*, max weight: 80 lbs
- Ships freight in a protective woodcrate
- Lifetime hardware warranty against manufacturer defects

dimensions:

Hardware

Assembled unit:
114.76" w x 95.45" h x 70.2" d 2914.9mm(w)
x 2424.43mm(h) x 1783.08mm(d)

Approximate weight:
249 lbs / 112.95kg

Graphic

Refer to related graphic template for more information.

Shipping

Packing case(s):3
3 OCH2

Shipping dimensions:

OCH2:
52" l x 29" h x 15" d
1321mm(l) x 737mm(h) x 381mm(d)

Approximate total shipping weight:
349lbs / 159kg

additional information:

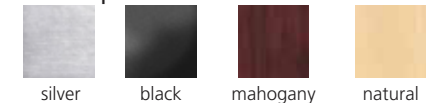
Graphic material:
Dye-sublimation SEG push-fit fabric

When included in a larger kit, a different packaging solution will be listed to accommodate all contents of the kit. Individual packaging no longer provided.

Panel Colors:



Tabletop Colors:



3 person assembly recommended:



Setup notes

1. Redesign of this exhibit without approval by manufacture may result in dangerous and unsafe structures. Manufacture disclaims any responsibility for redesigned exhibits it does not approve in writing.

2. Parts and components such as panels and extrusions are manufactured to metric sizing. Where ever possible sizes have been noted in feet and inches as well as in metric. Below is the imperial to metric sizing table as a reference. 'Nominal' refers to approximate sizes.

IMPERIAL TO METRIC SIZES

8' Nominal = 94 1/2" or 2400mm Actual
4' Nominal = 47 1/4" or 1200mm Actual
3' Nominal = 35 7/16" or 900mm Actual
2' Nominal = 23 5/8" or 600mm Actual
1' Nominal = 11 13/16" or 300mm Actual

Included In Your Kit

Tools, Components, & Connectors



HEX KEY SET x1



CB9 x4



CBE-50 x12



VF-FCDOOR-900-LEFT x1



AF16-300-MCB4-SIDEx



SW-FOOT-500x2



PH1-1155-L-L1 x1



PHFC4-900-L-MCB9-x4



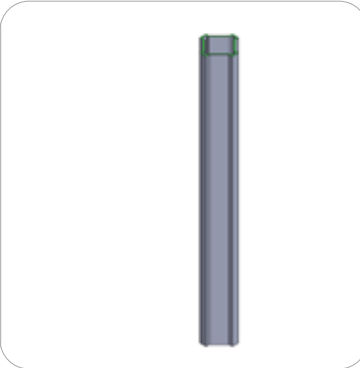
PHFC4-900-L-L x6



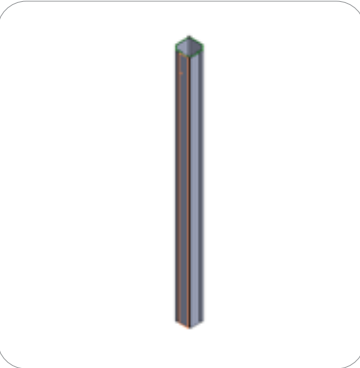
PHFC4-1200-L-MCB9x4



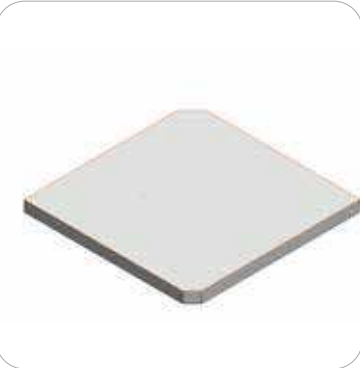
IB2-x5



PM4DSC-600x4



PMFC4-90-1193-A315x8



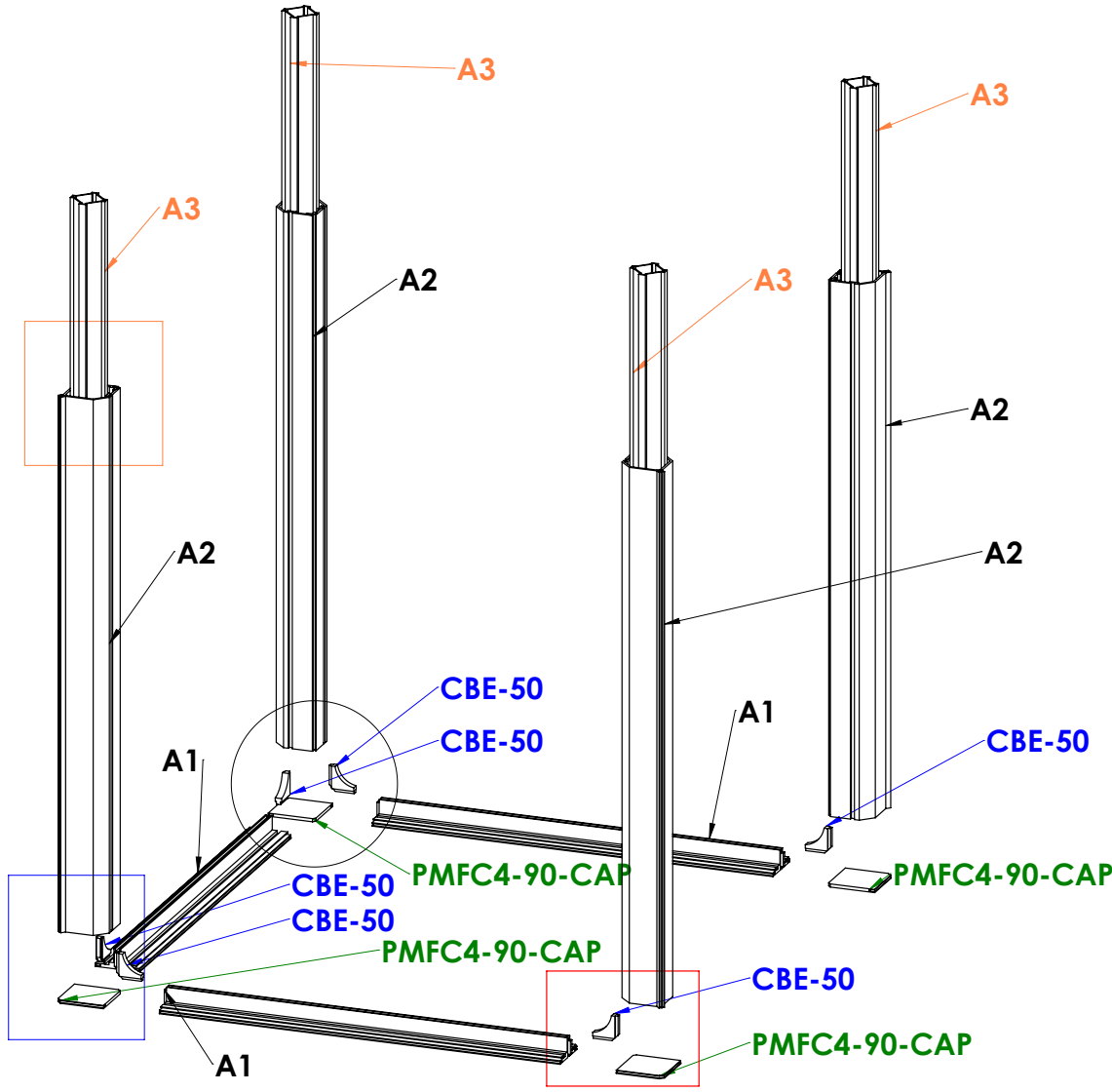
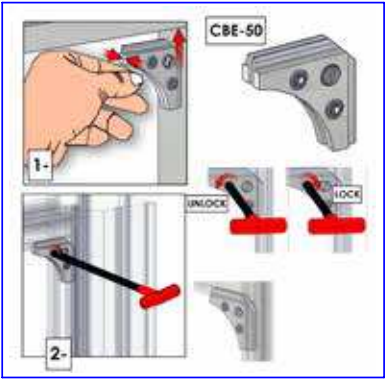
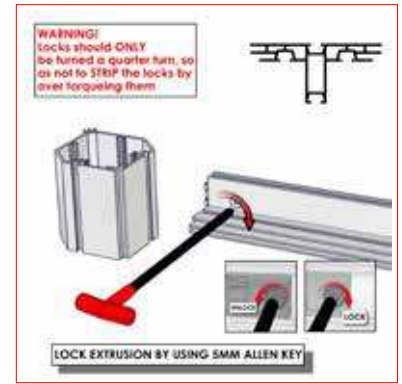
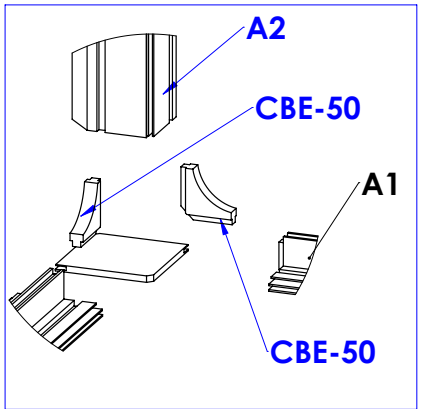
PMFC4-90-CAP x8



PS2-900-L-Lx1

Code	#	Description
A2	4	1193MM LENGTH OF PMF4-90 EXTRUSION-WITH STOP AT 315MM
A3	4	PM4DSC-600 - 600MM 4-WAY INTERNAL CONNECTION EXTRUSION W/ 8 TENSION GLIDE
PMFC4-90-CAP	4	INJECTION MOLDED PLASTIC END CAP FOR PMF4-90
A1	3	PHFC4-900 EXTRUSION-WITH CAM LOCKS-WITH CAM LOCKS
CBE-50	6	CORNER PRESSURE FIT CONNECTOR

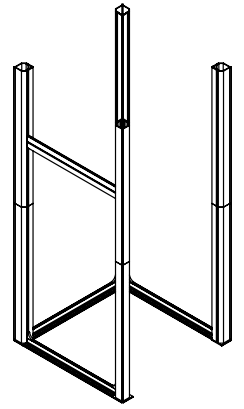
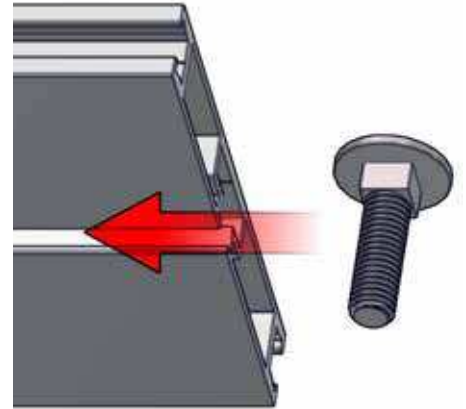
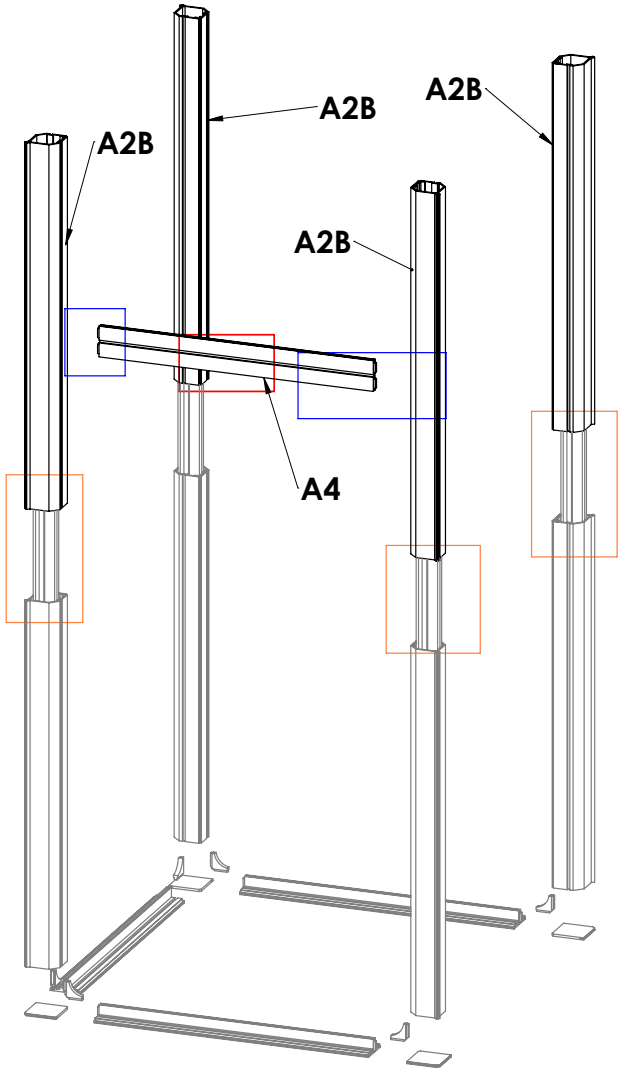
BOOTH STORAGE CLOSET BASE



Code	#	Description
A2B	4	1193MM LENGTH OF PMF4-90 EXTRUSION""
A4	1	900MM LENGTH OF PS2 EXTRUSION-WITH CAM LOCKS-WITH CAM LOCKS

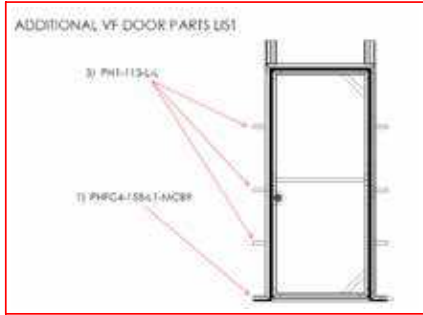
MID LEVEL SETUP FOR STORAGE CLOSET

PUT BOLTS FOR MONITOR MOUNT ON BEFORE LOCKING THE PS2 IN PLACE

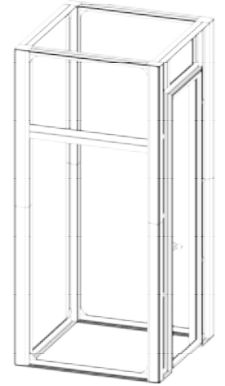
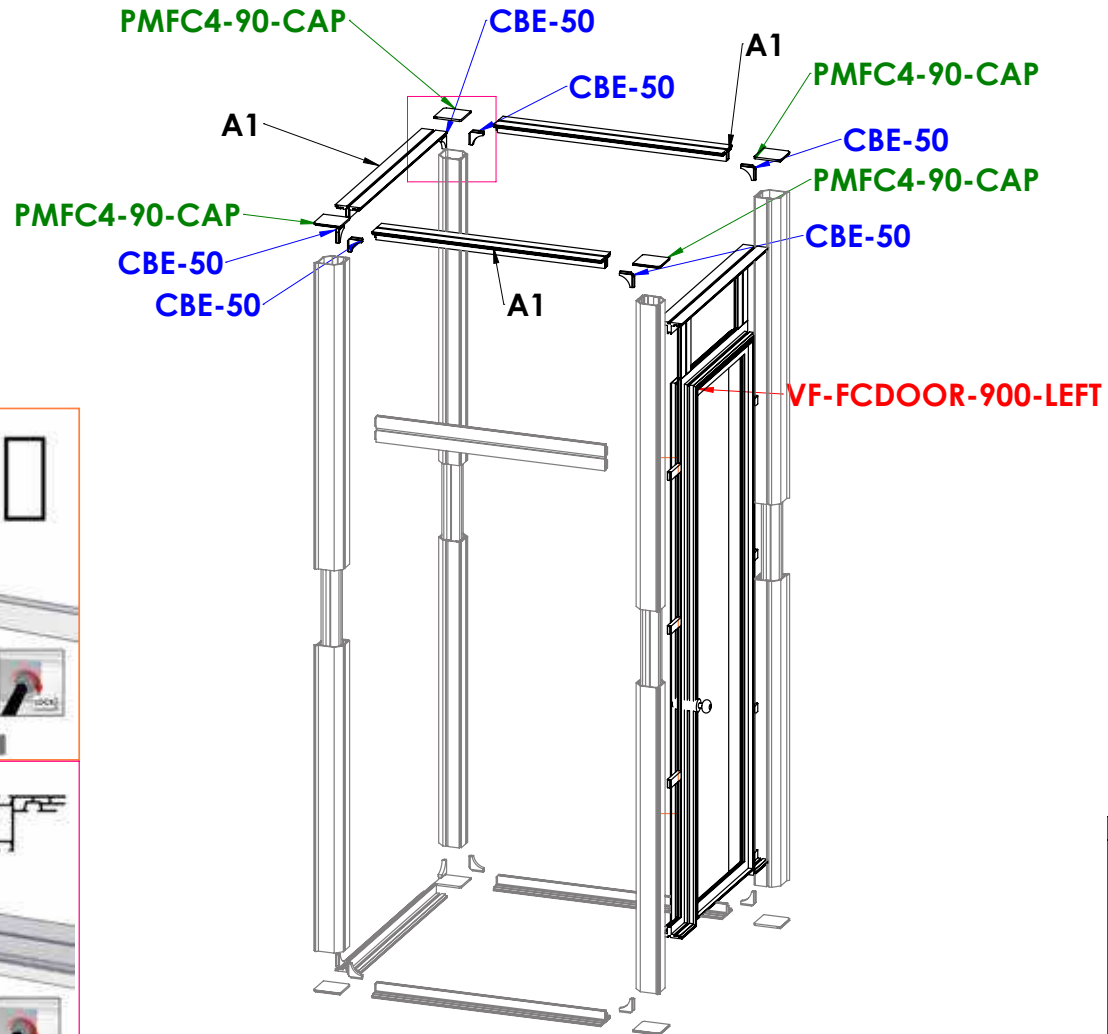
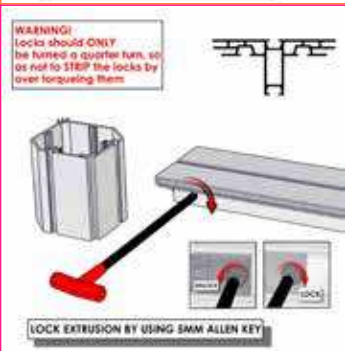
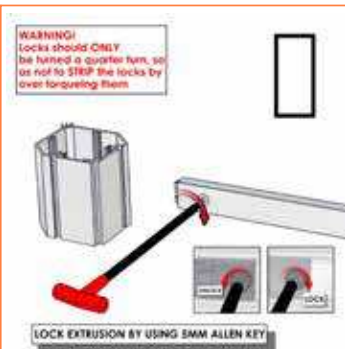
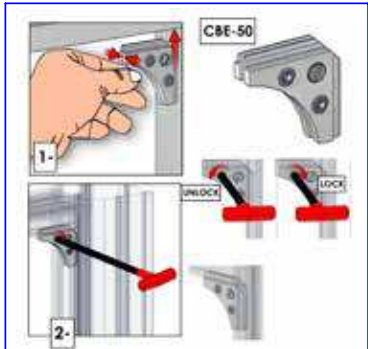


Code	#	Description
PMFC4-90-CAP	4	INJECTION MOLDED PLASTIC END CAP FOR PMFC4-90
A1	3	PHFC4-900 EXTRUSION-WITH CAM LOCKS-WITH CAM LOCKS
CBE-50	6	CORNER PRESSURE FIT CONNECTOR
VF-FCDOOR-900-LEFT	1	VECTOR FRAME FABRIC CHANNEL DOOR, 900MM W X 2400MM H FRAME, LEFT

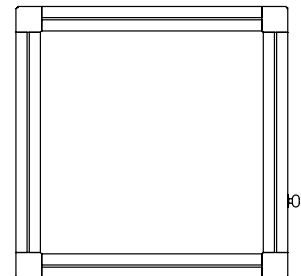
TOP LEVEL STORAGE CLOSET



**VF-FCDOOR-900-LEFT
COMES PRE ASSEMBLED**

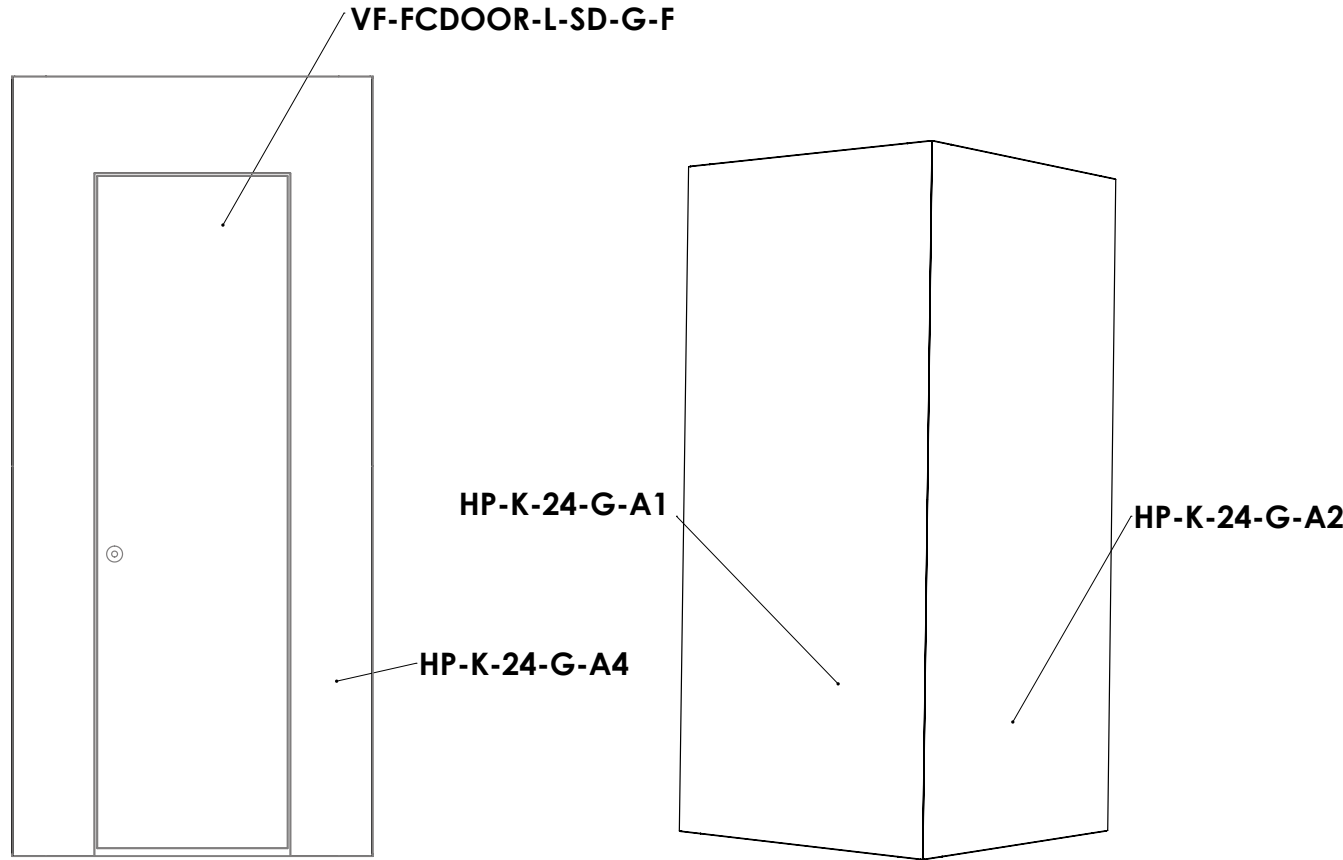
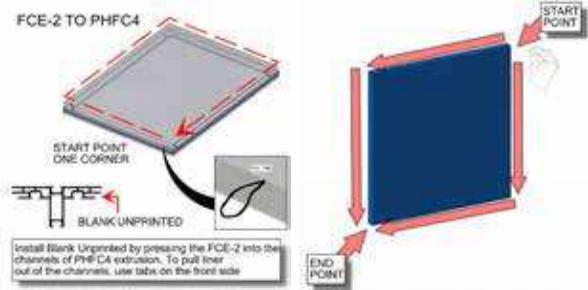
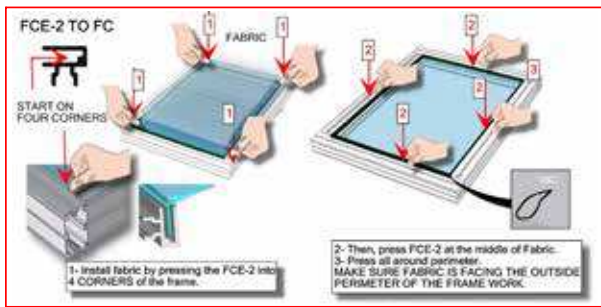


TOP VIEW



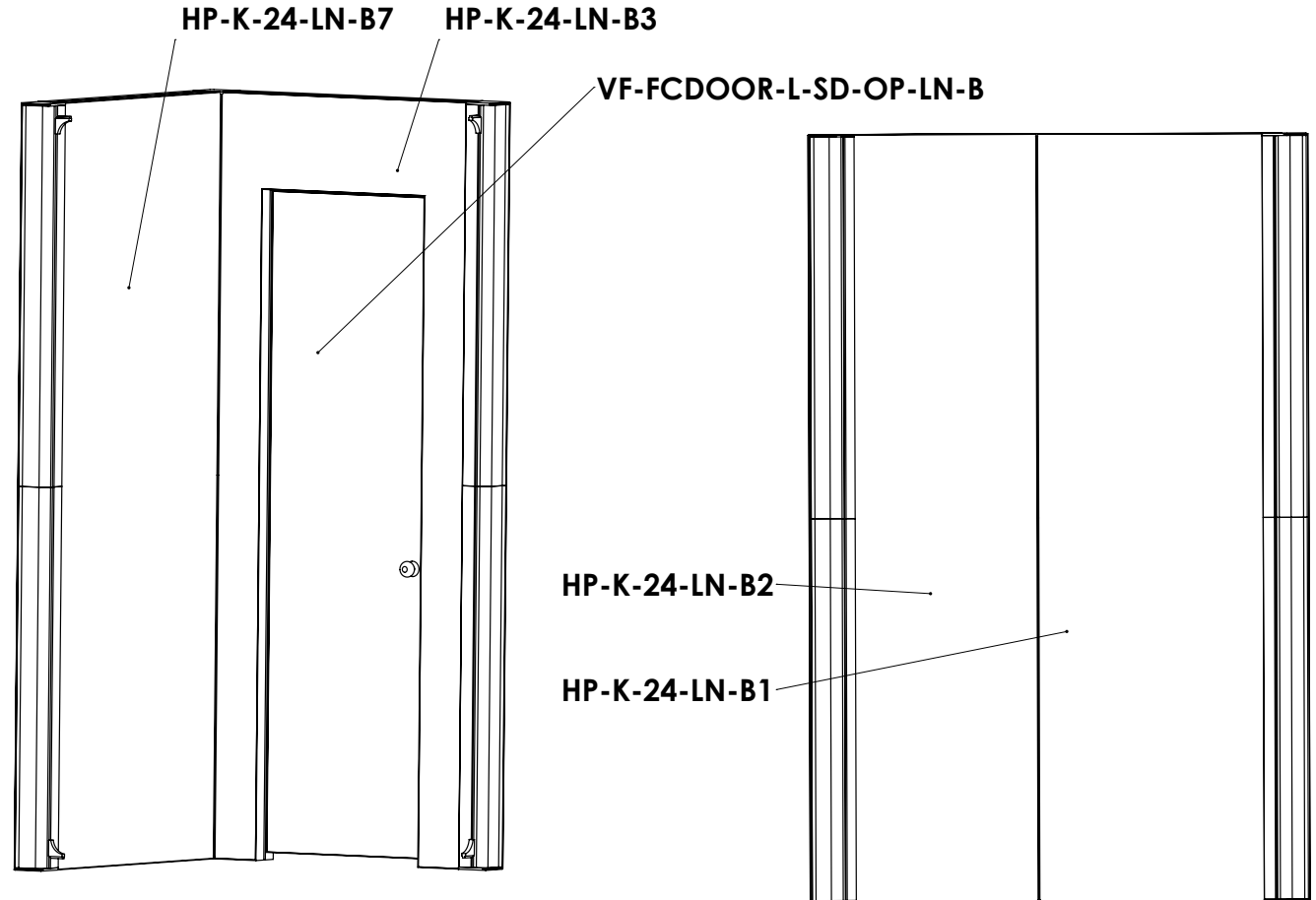
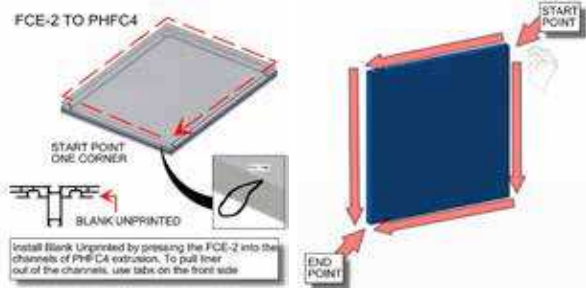
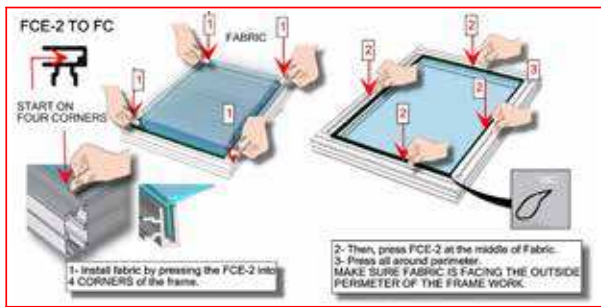
GRAPHICS 1

Code	#	Description
HP-K-24-G-A2	1	GRAPHIC(A2) 43.66 w X 94.37 h finished size Dye-sub print on 8oz. Power Stretch, with FCE-2 silicone beading sewn to back perimeter, corner pull sewn in bottom right corner
HP-K-24-G-A1	1	GRAPHIC(A1) 43.66 w X 94.37 h finished size Dye-sub print on 8oz. Power Stretch, with FCE-2 silicone beading sewn to back perimeter, corner pull sewn in bottom right corner
VF-FCDOOR-L-SD-G-F	1	GRAPHIC(A4) 22.95" (583MM) W X 81.38" (2067MM) H Visual Size Dye Sub Print On Power Stretch, with FCE-2 silicone beading sewn to back perimeter, corner pull sewn in bottom right corner.
HP-K-24-G-A3	1	GRAPHIC(A3) 43.66" X 94.33" Power Stretch, Custom Silicone Edge Graphic, with FCE-2 silicone beading sewn to back perimeter, corner pull sewn in bottom right corner.



Code	#	Description
HP-K-24-LN-B1	1	LINER(B1) 35.55 w X 94.37 h finished size Opaque liner, with FCE-2 silicone beading sewn to back perimeter, corner pull sewn in bottom right corner
VF-FCDOOR-L-SD-OP-LN-B	1	LINER(B4) 22.95" (583MM) W X 81.38" (2067MM) H Visual Size Opaque Liner, with FCE-2 silicone beading sewn to back perimeter, corner pull sewn in bottom right corner.
HP-K-24-LN-B3	1	LINER(B3) 35.59" X 94.33" Opaque Liner, with FCE-2 silicone beading sewn to back perimeter, corner pull sewn in bottom right corner.
HP-K-24-LN-B2	1	LINER(B2) 35.55 w X 94.37 h finished size Opaque liner, with FCE-2 silicone beading sewn to back perimeter, corner pull sewn in bottom right corner
HP-K-24-LN-B7	1	LINER(B7) 35.55 w X 94.37 h finished size Opaque liner, with FCE-2 silicone beading sewn to back perimeter, corner pull sewn in bottom right corner

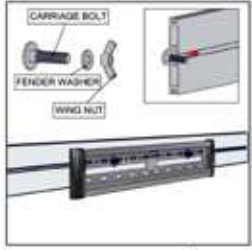
GRAPHICS/LINER



Code	#	Description
EXT-M-MB	1	EXTRUSION MOUNTED MEDIUM MONITOR BRACKET AND MOUNTING HARDWARE

MONITOR MOUNT

MEDIUM MONITOR MOUNT

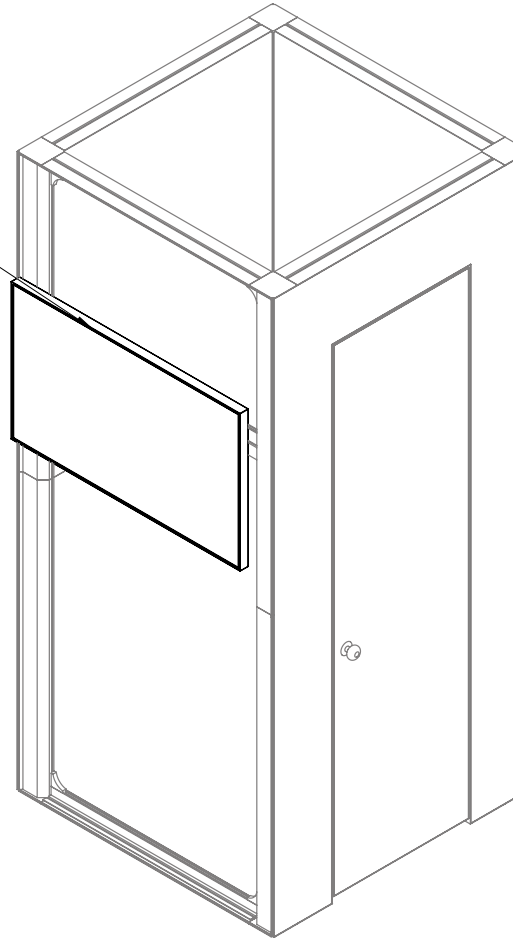


1- INSERT BOLTS INTO PROPER CHANNEL. THEN SECURE MONITOR MOUNT WITH WASHER & WING NUT.

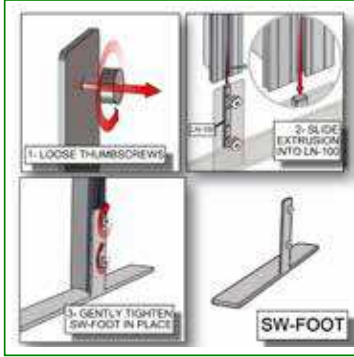
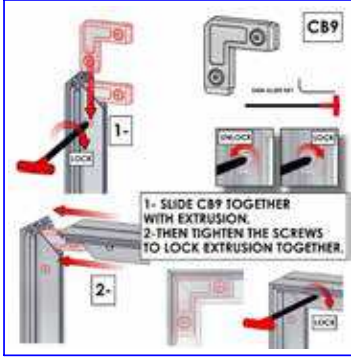
2- ATTACH MONITOR TO BRACKETS SEE NB MANUAL FOR MORE INFO



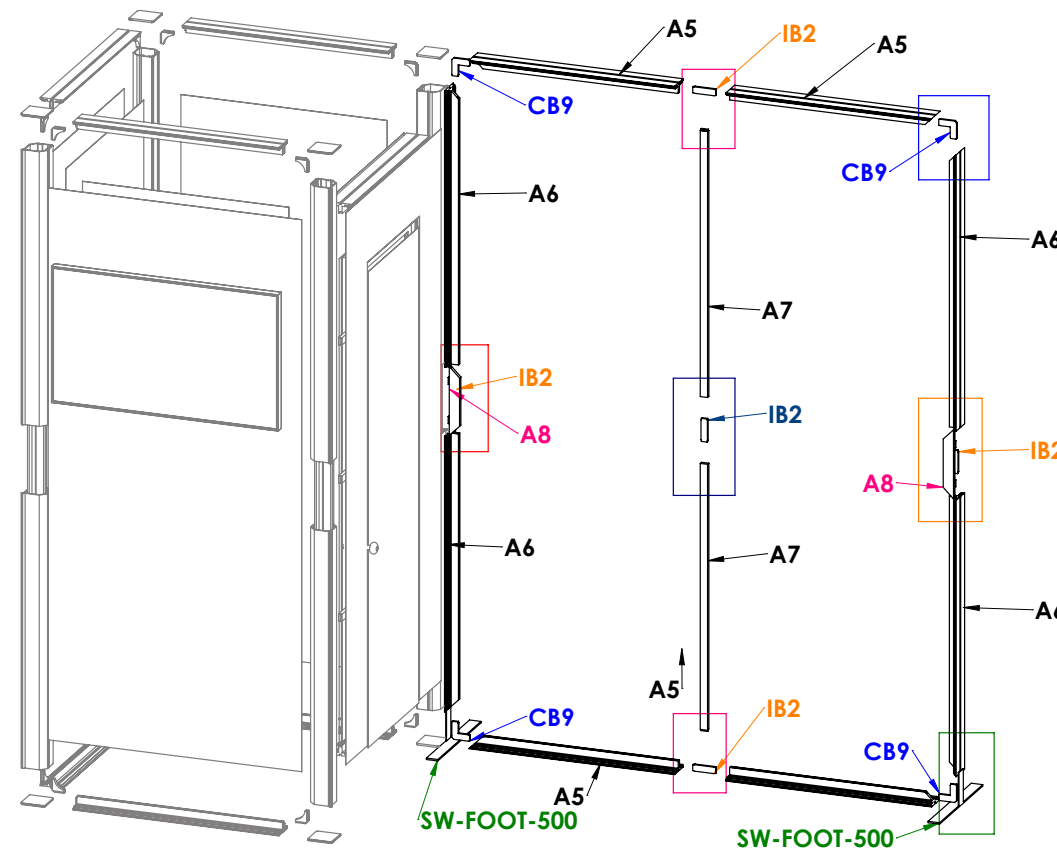
EXT-M-MB



Code	#	Description
A5	4	PHFC4-900 EXTRUSION-WITH IB2 LOCK HOLE-WITH MITRE CUT FOR CB9
IB2	5	JOINER BAR(NEW DESIGN)
A8	2	300MM AF16 EXTRUSION-WITH SIDE LOCKS
A7	2	1155MM PH1 EXTRUSION-WITH IB2 LOCK HOLE-CAM LOCK
CB9	4	90 DEGREE JOINER
A6	4	PHFC4-1200 EXTRUSION-WITH IB2 LOCK HOLE-WITH MITRE CUT FOR CB9
SW-FOOT-500	2	SMART WALL FOOT 500MM LENGTH



VECTOR FRAME BACK WALL

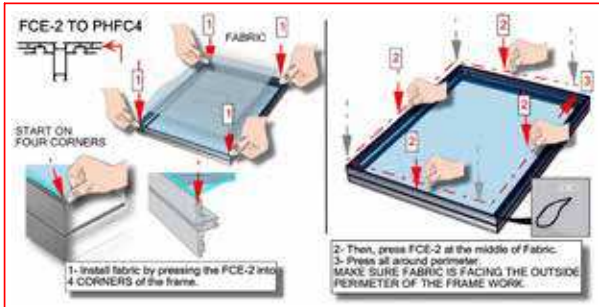


ASSEMBLE LAYING DOWN STAND UP AFTER GRAPHICS IS ATTACHED

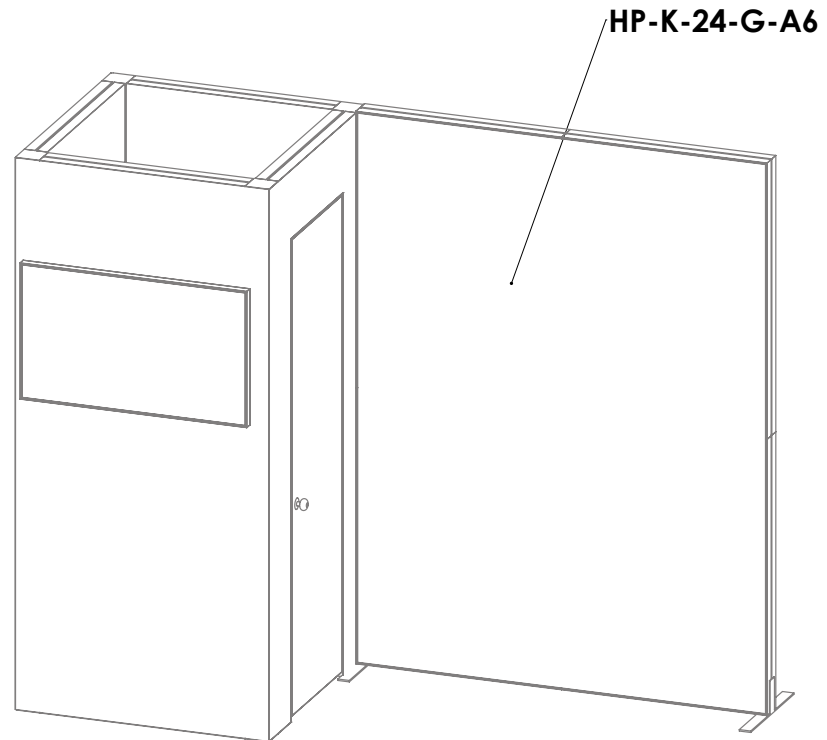
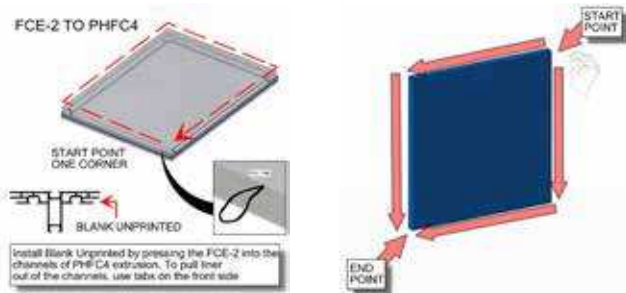
ASSEMBLE PH1 CENTER POST BEFORE LOCKING THE TOP IN PLACE



Code	#	Description
HP-K-24-G-A6	1	GRAPHIC(A6) 70.75 w X 94.37 h finished size Dye-sub print on 8oz. Power Stretch, with FCE-2 silicone beading sewn to back perimeter, corner pull sewn in bottom right corner



**PUT GRAPHIC ON WHILE IT IS STILL ON THE GROUND
HAVE TWO PEOPLE STAND UP THE FRAME ONCE
THE GRAPHIC IS INSTALLED**



Vector Frame Counter 04

VFC-04





Vector Frame™ counters compliment the Vector Frame series of exhibit kits, but are also ideal for any stand-alone event or display. Vector Frame counters couple simple extrusion-based frames with push-fit graphics or rigid sintra graphics. Countertops are available in four colored finishes. Custom sizes also available.



features and benefits:

- Feature push-fit fabric graphics and simple extrusion based frames
- Choose from four countertop finishes
- Easy step-by-step instructions
- Wheeled portable shipping case
- Lifetime limited warranty against manufacturer defects

dimensions:

Hardware	Graphic
<p>Assembled unit: 31" w x 40.5" h x 19" d 1400mm(w) x 1029mm(h) x 572mm(d)</p> <p>Approximate unit weight: 52 lbs / 24 kgs</p>	Refer to related graphic template for more information
Shipping	
<p>Packing case(s) 1 OCH2</p> <p>Shipping dimensions: 52" l x 29" h x 15" d 1321mm(l) x 737mm(h) x 381mm(d)</p> <p>Approximate shipping weight: 82 lbs / 37 kgs</p>	
additional information:	
<p>Graphic material: Dye-sublimated fabric</p> <p>Counter holds max weight 100 lbs / 46 kgs</p>	
<p>Tabletop Colors:</p> <div style="display: flex; justify-content: space-around; align-items: center;"> <div style="text-align: center;">  silver </div> <div style="text-align: center;">  black </div> <div style="text-align: center;">  mahogany </div> <div style="text-align: center;">  natural </div> </div>	

Included In Your Kit

Tools, Components, & Connectors



5MM ALLEN-T x1



CB10-R x8



PMFC2-90-CAP x4



PMFC2-90-986-L1-L1 x2



PHFC2-600-L-L x2



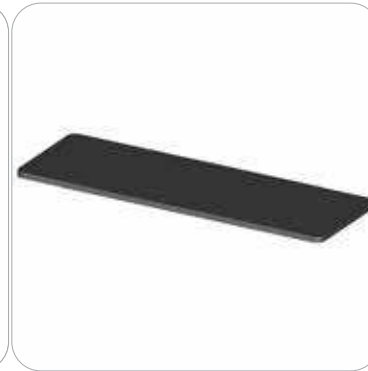
PHFC2-300-L-L x4



TUBE-30-910 x4



PHFC2-100-L-L x4



VFC-04-CT-S x1



VFC-04-CT x1

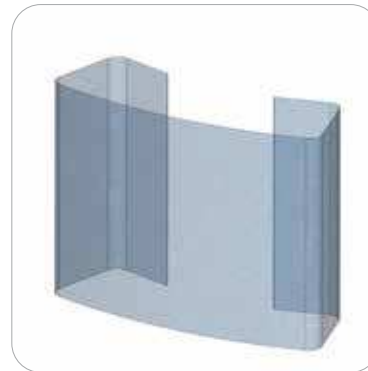


PE-1000 x2

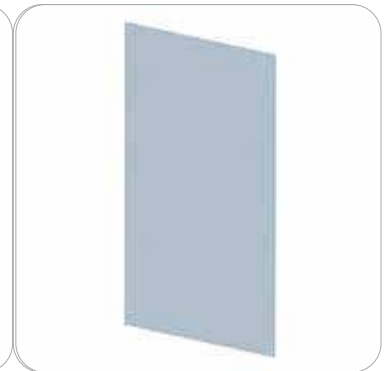


PH1-288-L-L x4

Graphics



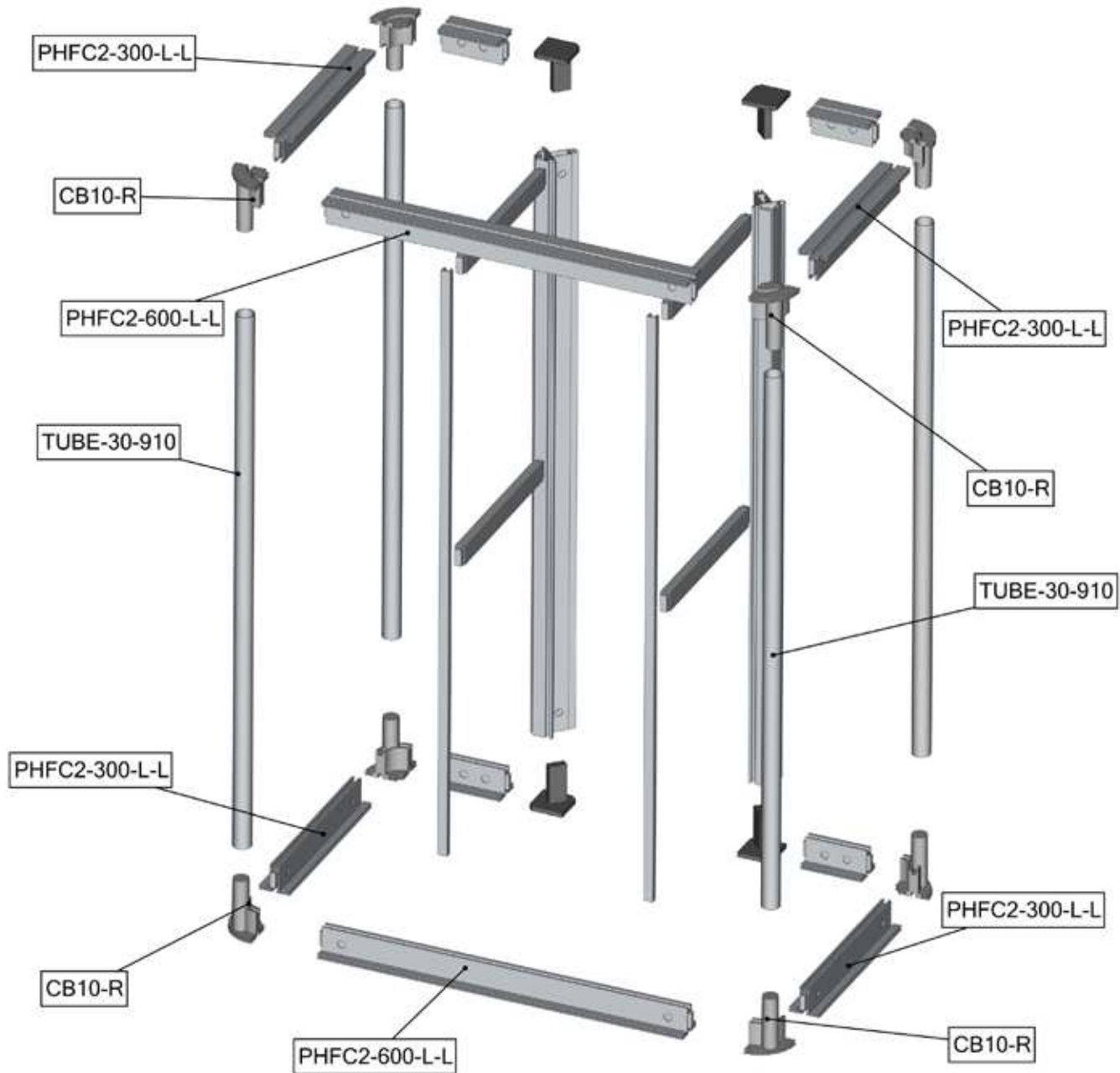
VFC-04-A-G x1



VFC-04-B-G x1

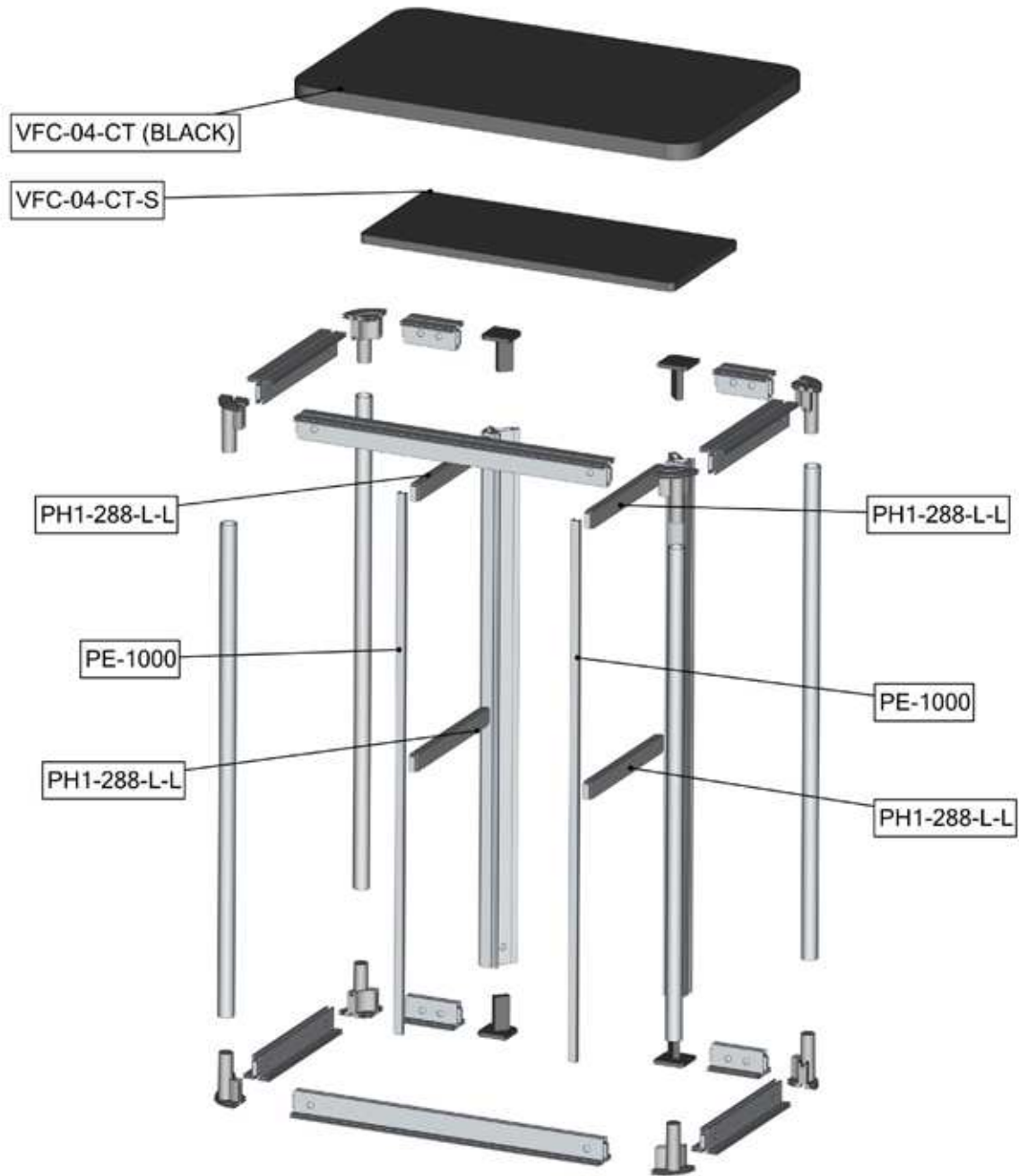
Exploded View

VFC-04
Section 1



Exploded View

VFC-04
Section 3



Connection Methods

Connection Method 1: PMFC2-90-CAP



First, press button to insert the cap into the extrusion. The button will snap in place.

Connection Method 2: PMFC2 / PHFC2



First, with the cam lock disengaged, place the cam lock teeth into the extrusion channel. Second, use the allen key tool to lock it in place. Make half turns clock-wise to engage the cam lock. Do not over tighten the lock buttons.

Connection Method 3: CB10-R / PHFC2



First, press and hold the snap button while you slide it into the tube. The snap button connection is secure when it protrudes through the tube hole. Second, using the allen key tool, disengage the cam lock in the extrusion end and place its teeth into the CB10-R channel. Third, with the cam lock teeth in the channel, use the allen key tool to engage the cam lock. Make a half turn to lock, do not over tighten. Repeat for opposite end.

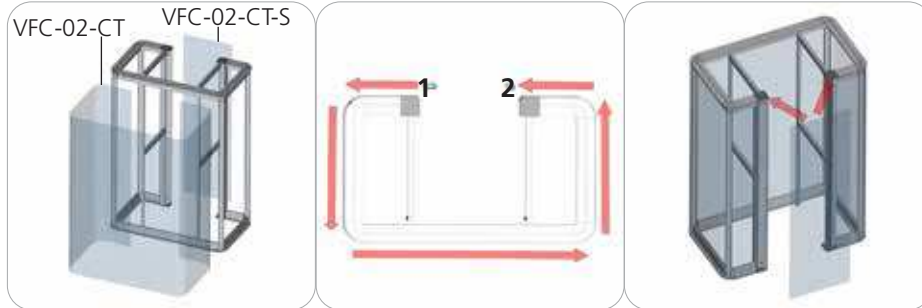
Connection Method 4: CAM LOCK / PE



First, with the cam lock disengaged, place the cam lock teeth into the extrusion channel. Second, use the allen key tool to lock it in place. Make half turns clock-wise to engage the cam lock. Do not over tighten the lock buttons.

Connection Methods

Connection Method 5: Silicon Edge (SEG)



First, at START point 1, start pressing VFC-04-A-G fabric SEG from top to bottom of the counter fabric channels. Second, work the SEG across the rest of the top and bottom counter fabric channels to END point . At END point 2, start pressing the fabric SEG from top to bottom of the counter fabric channel. Third, apply VFC-04-B-G fabric SEG from top to bottom of the counter fabric channels.

Connection Method 6: Counter Top



Counter top is held into place by the blocks seen about.

Kit Assembly

Step by Step

Step 1.

Gather the components to build the counter frame sections 1 and 2. Use the Exploded View section 1 and 2 for part labels.

Reference Connection Method(s) 1, 2 and 3 for more details.



Step 2.

Gather the components to build the counter frame section 3. Use the Exploded View section 3 for part labels. Use section 3 to merge sections 1 and 2.

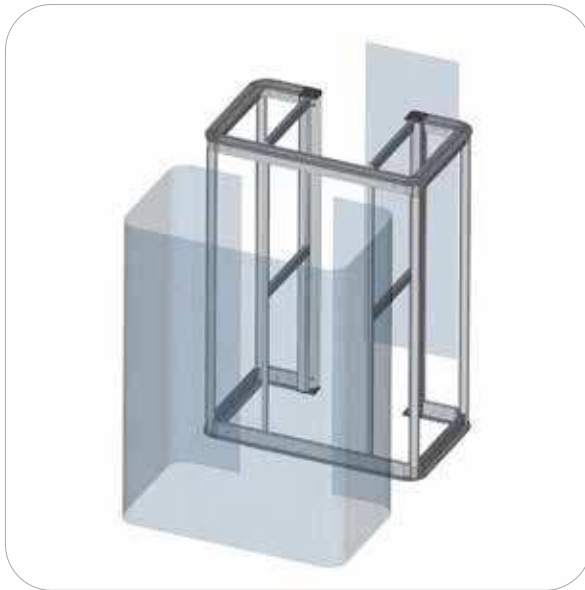
Reference Connection Method(s) 2, 3 and 4 for more details.



Step 3.

Apply the counter fabric graphics by pressing the edges of the graphic into the extrusion fabric channel.

Reference Connection Method 5 for more details.



Step 4.

Gather the components to build the counter top and shelf. Use the Exploded View section 3 for part labels.

Reference Connection Method 6 for more details.

Setup is complete.

