

# Hbrid Pro 20x20 Modular Island Kit 23

## HP-K-23

Hybrid Pro™ Modular Kit 23 is a sophisticated and symmetrical 20ft x 20ft island exhibit, perfect for an exhibitor looking for features and functionality. Kit 23 features a heavy-duty aluminum extrusion center frame that supports two square-shaped fabric structures.

The top fabric structure is a tube structure with pillowcase fabric graphics and is meant to display your company logo so all in the exhibit hall can see it from afar! The center square utilizes the extrusion posts to create an additional area for branding and messaging above eye-level. Two 8ft tall floor displays add features and functionality. With medium monitor mounts and three shelves for small product display on each, the floor-based displays are designed to show and communicate your service offering in digital form and your product in physical form. Counters near the center posts add areas for storage and reception.



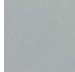










## features and benefits:

- 14'4" tall island display
  - No rigging required
  - Features two square fabric structures up high to draw visitors to the booth
  - Floor based backwalls feature push-fit fabric graphics; monitor mounts and shelves
- Center counters add storage and reception areas
  - Ships freight in a woodcrate
  - Medium monitor bracket on center wall holds 32-55" LCD\*, max weight: 80 lbs
- \*Monitors, flooring and foreground counters not included"

## dimensions:

Hardware	Graphic
Assembled unit: 244.33"w x 171.5"h x 168"d 6206mm(w) x 4356.1mm(h) x 4267.2mm(d)  Approximate weight: 1130 lbs / 512.56kg	Refer to related graphic template for more information.

Shipping	additional information:
Packing case(s): WOODCRATE-V  Shipping dimensions: WOODCRATE-V 48"l x 101"h x 53"d 1220mm(l) x 2566mm(h) x 1347mm(d)  Approximate total shipping weight: 1440 lbs / 654kg	Graphic material: Dye-sublimation zipper pillowcase fabric Dye-sublimation SEG push-fit fabric  When included in a larger kit, a different packaging solution will be listed to accommodate all contents of the kit. Individual packaging no longer provided.  <b>Panel Colors:</b> <div></div> <div>grey      black      white</div> <b>Tabletop Colors:</b> <div></div> <div>silver      black      mahogany      natural</div> <b>4 person assembly recommended:</b> <div></div>

## Setup notes

1. Redesign of this exhibit without approval by manufacture may result in dangerous and unsafe structures. Manufacture disclaims any responsibility for redesigned exhibits it does not approve in writing.

2.Parts and components such as panels and extrusions are manufactured to metric sizing.Where ever possible sizes have been noted in feet and inches as well as in metric.Below is the imperial to metric sizing table as a reference. 'Nominal' refers to approximate sizes.

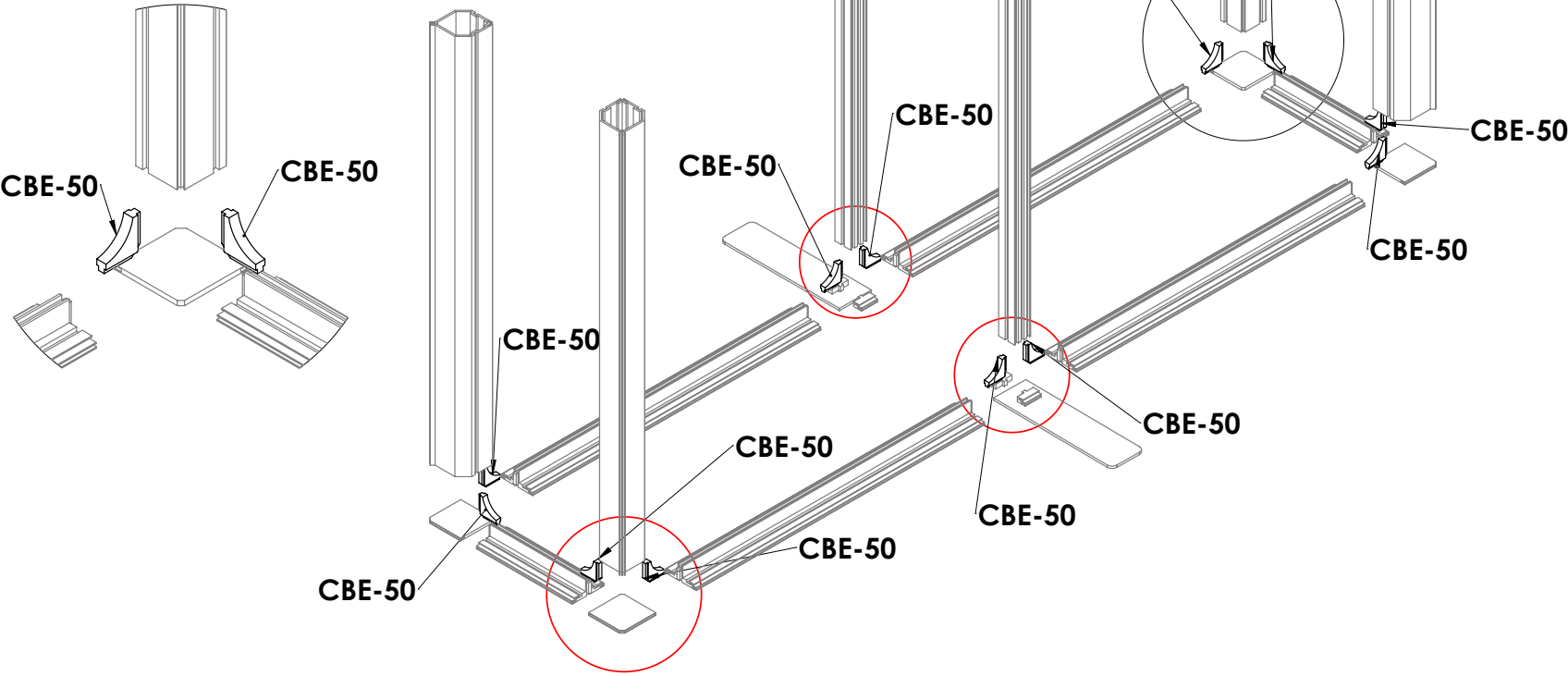
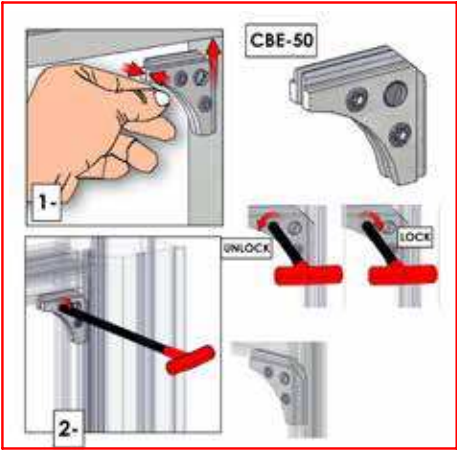
### IMPERIAL TO METRIC SIZES

8' Nominal = 94 1/2" or 2400mm Actual  
4' Nominal = 47 1/4" or 1200mm Actual  
3' Nominal = 35 7/16" or 900mm Actual  
2' Nominal = 23 5/8" or 600mm Actual  
1' Nominal = 11 13/16" or 300mm Actual



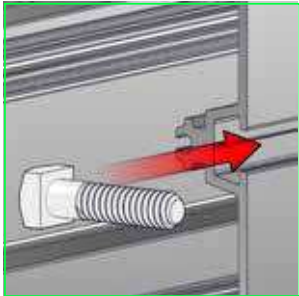
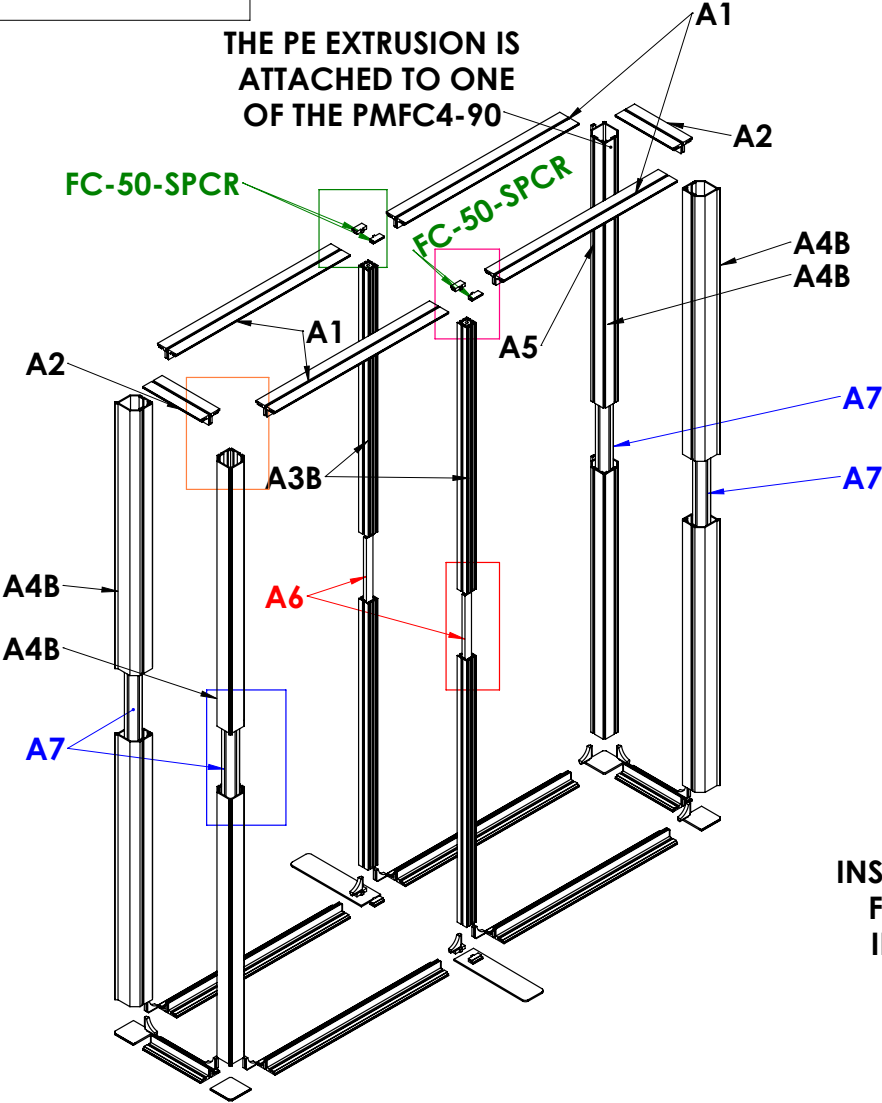
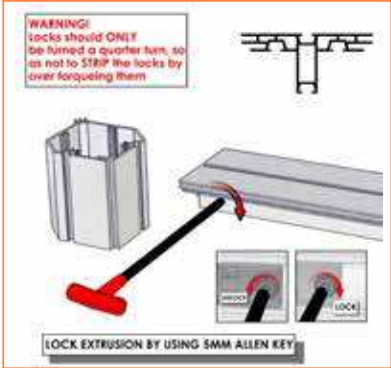
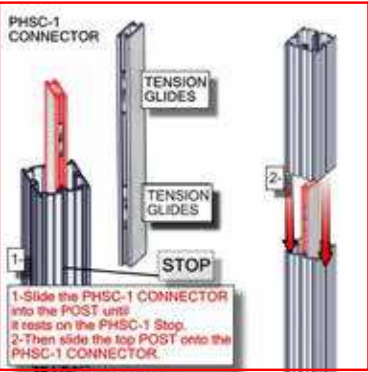
Code	#	Description
CBE-50	12	CORNER PRESSURE FIT CONNECTOR

CORNER HARDWARE X 2



Code	#	Description
A6	2	300MM PH4 EXTRUSION WITH TENSION GLIDES
A3B	2	PM2S2-1200 EXTRUSION-WITH NUT INSERT-WITH STOP AT 165MM
FC-50-SPCR	4	FC-50-SPCR - FRAME CHANNEL SPACER IN ABS
A1	4	PHFC4-900 EXTRUSION-WITH CAM LOCKS-WITH CAM LOCKS
A5	1	1193MM CUT DOWN FROM 1200MM LENGTH OF PE EXTRUSION
A4B	4	1193MM LENGTH OF PMF4-90 EXTRUSION"
A7	4	PM4DSC-600 - 600MM 4-WAY INTERNAL CONNECTION EXTRUSION W/ 8 TENSION GLIDE
A2	2	PHFC4-300 EXTRUSION-WITH CAM LOCKS-WITH CAM LOCKS

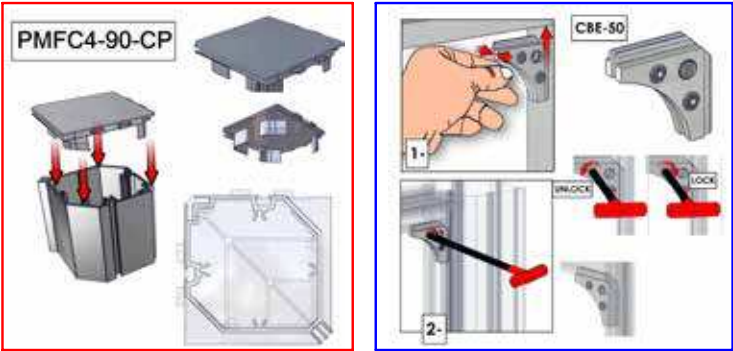
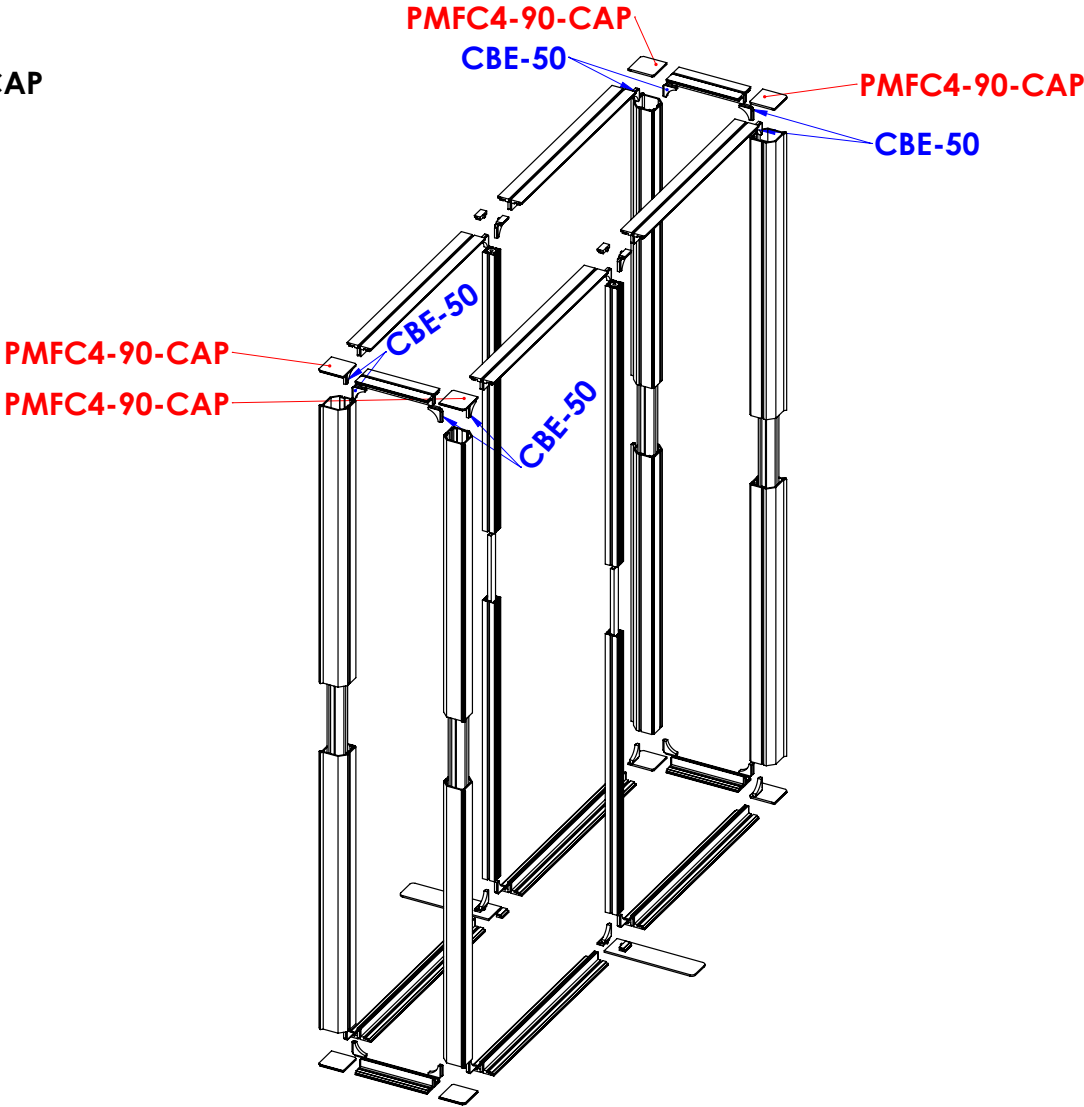
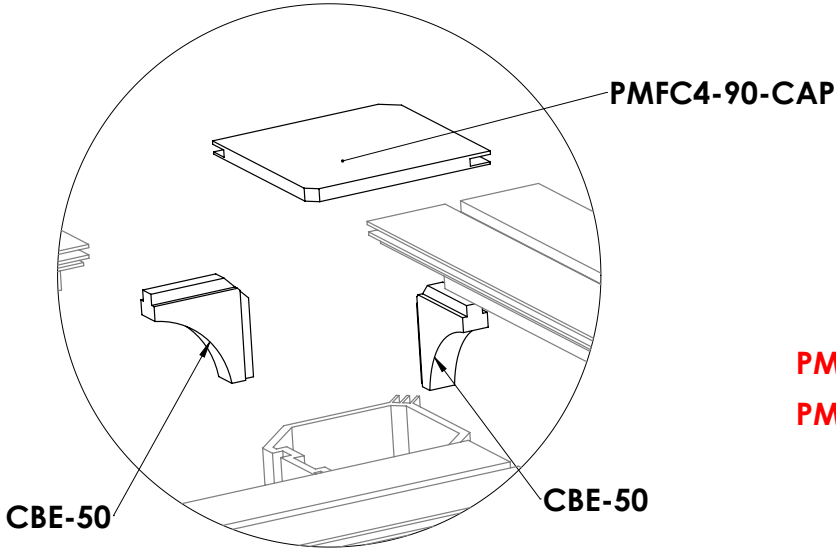
TOP OF COLUMN X 2



INSERT THE BOLT HARDWARE FROM THE MONITOR KIT IN ONE OF THE CENTER POSTS

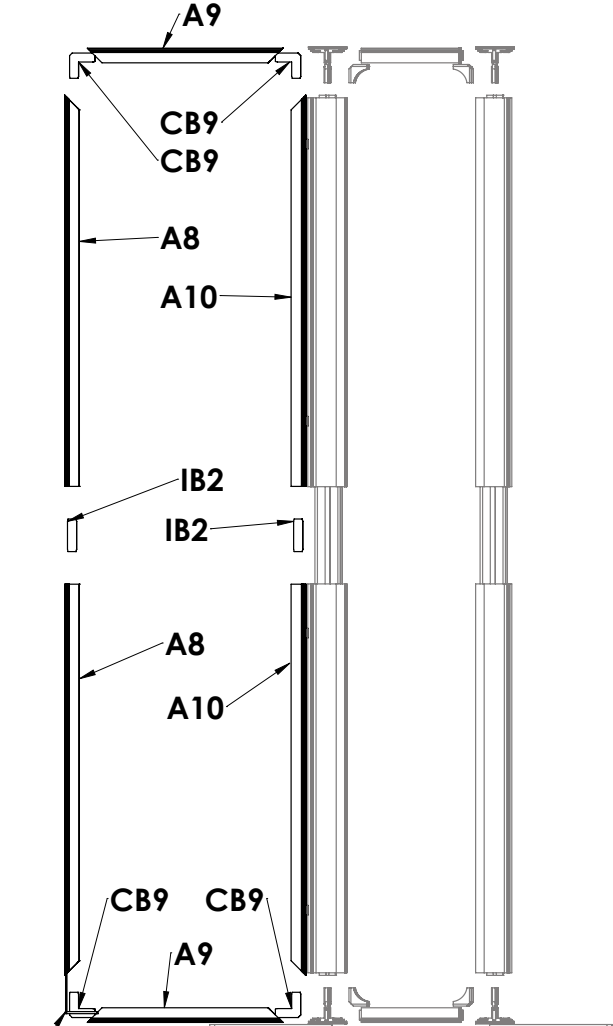
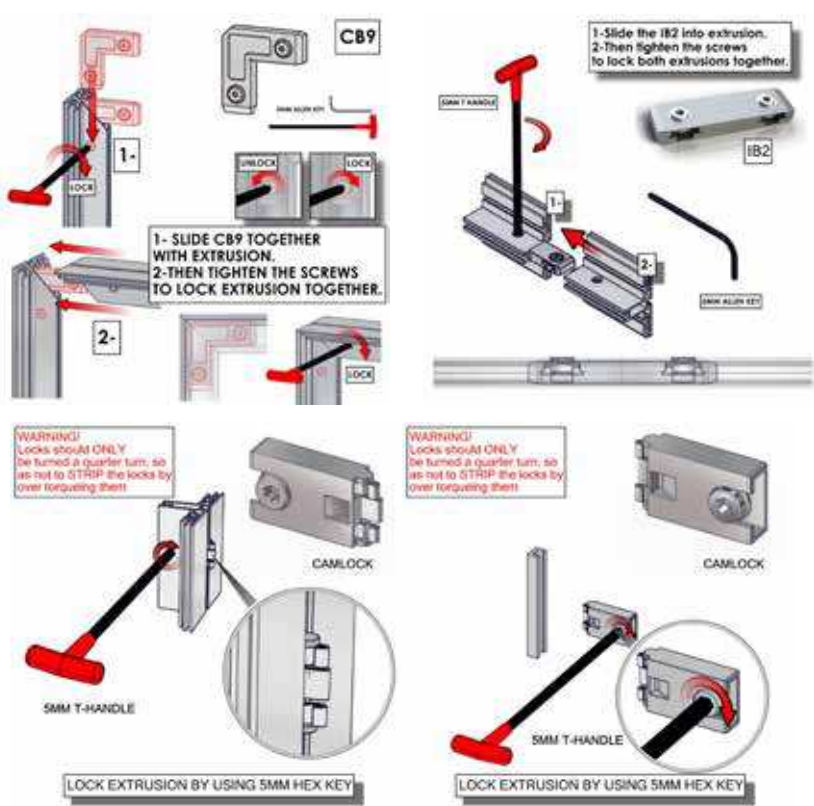
Code	#	Description
CBE-50	12	CORNER PRESSURE FIT CONNECTOR
PMFC4-90-CAP	4	INJECTION MOLDED PLASTIC END CAP FOR PMFC4-90

# CORNER AND CAP HARDWARE





Code	#	Description
A9	2	PHFC4-600 EXTRUSION-WITH MITRE CUT FOR CB9-WITH MITRE CUT FOR CB9
CB9	4	90 degree joiner
A8	2	PHFC4-1200 EXTRUSION-WITH IB2 LOCK HOLE-WITH MITRE CUT FOR CB9
IB2	2	JOINER BAR(NEW DESIGN)
A10	2	PHFC4-1200 EXTRUSION-WITH IB2 LOCK HOLE-WITH MITRE CUT FOR CB9-SIDE
CUS-SW-FOOT-650-LN	1	SMART WALL FOOT , CUT DOWN TO 425MM

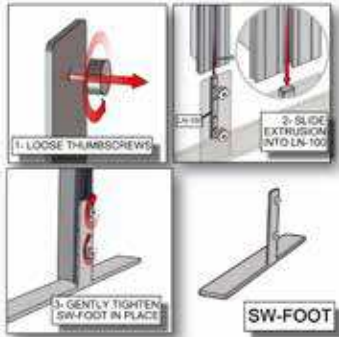


CUS-SW-FOOT-650-LN

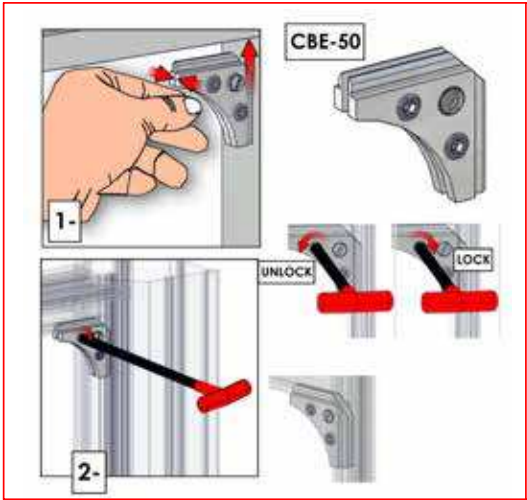
COLUMN  
SIDEWALL X2



ASSEMBLE SIDEWALL  
LAYING DOWN  
STAND UP AND LOCK  
THE CAM IN PLACE



Code	#	Description
CBE-50	4	CORNER PRESSURE FIT CONNECTOR



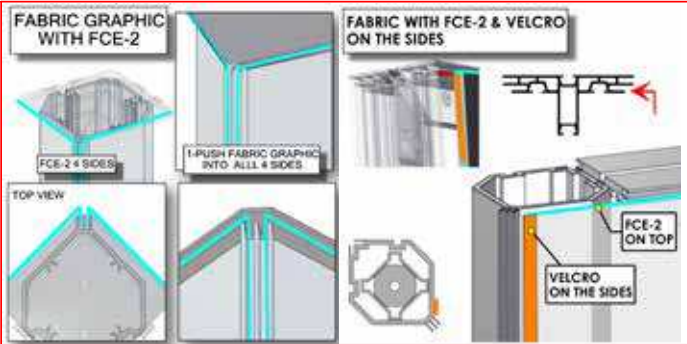
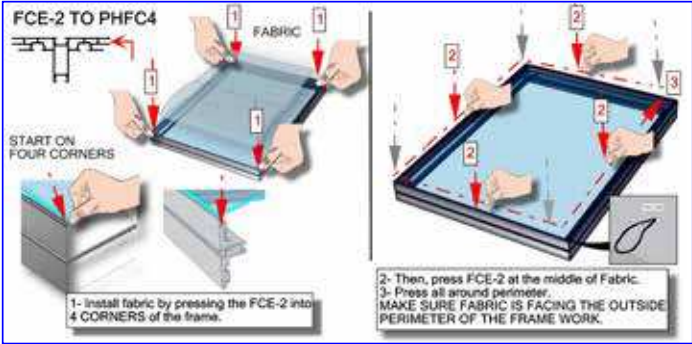
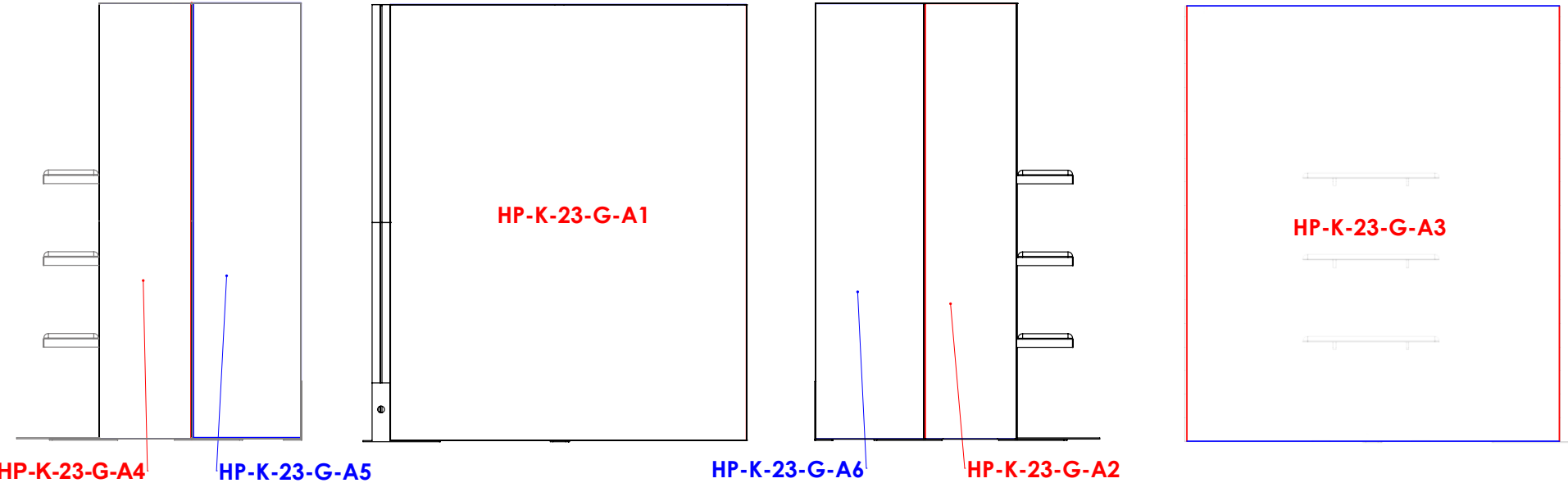
**SIDEWALL CORNER  
HARDWARE X 2**



# COLUMN GRAPHICS 1

Code	#	Description
HP-K-23-G-A3	1	GRAPHIC( A3 ) 81.06 w X 94.37 h finished size Dye-sub print on 8oz. Power Stretch, with FCE-2 silicone beading sewn to back perimeter, corner pull sewn in bottom right corner
HP-K-23-G-A5	1	GRAPHIC( A5 ) 23.5 w X 94.37 h finished size Dye-sub print on 8oz. Power Stretch, with FCE-2 silicone beading sewn to back perimeter, corner pull sewn in bottom right corner
HP-K-23-G-A1	1	GRAPHIC( A1 ) 81.06 w X 94.37 h finished size Dye-sub print on 8oz. Power Stretch, with FCE-2 silicone beading sewn to back perimeter, corner pull sewn in bottom right corner
HP-K-23-G-A2	1	GRAPHIC( A2 ) 20.04 w X 94.37 h finished size Dye-sub print on 8oz. Power Stretch, with FCE-2 silicone beading sewn to back perimeter, corner pull sewn in bottom right corner
HP-K-23-G-A6	1	GRAPHIC( A6 ) 23.5 w X 94.37 h finished size Dye-sub print on 8oz. Power Stretch, with FCE-2 silicone beading sewn to back perimeter, corner pull sewn in bottom right corner
HP-K-23-G-A4	1	GRAPHIC( A4 ) 20.04 w X 94.37 h finished size Dye-sub print on 8oz. Power Stretch, with FCE-2 silicone beading sewn to back perimeter, corner pull sewn in bottom right corner

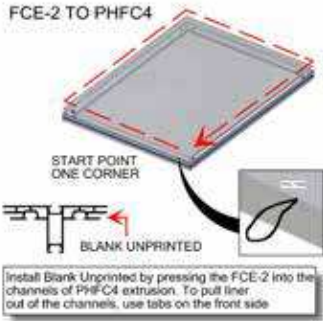
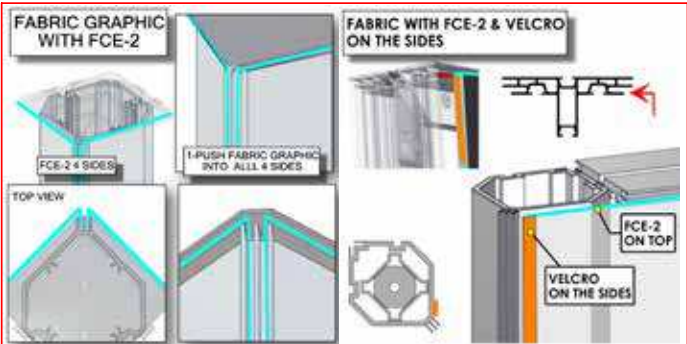
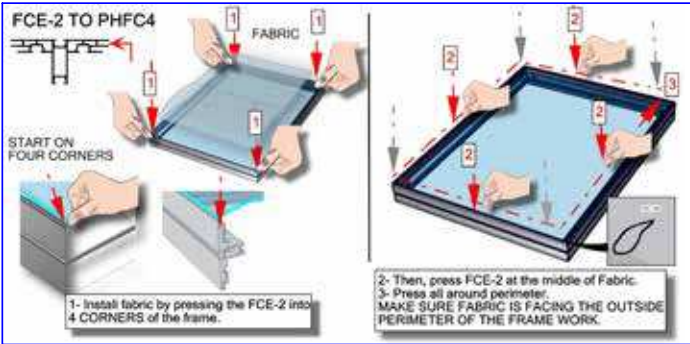
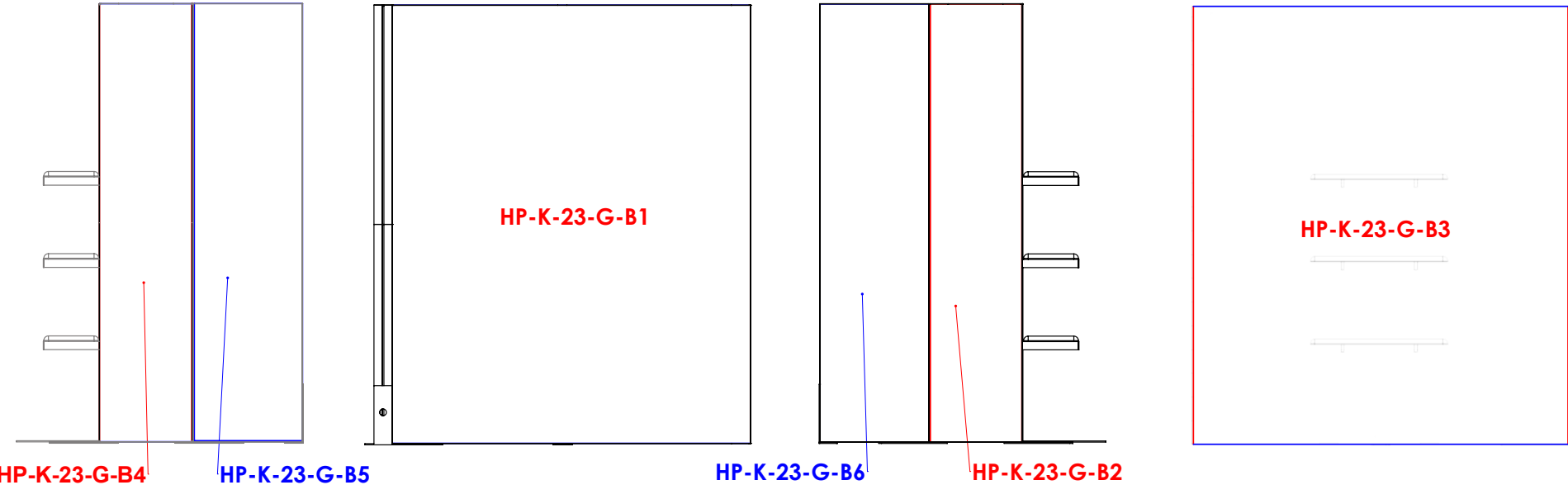
LEAVE A1 OFF TELL AFTER  
THE SHELF UNIT IS IN PLEASE



# COLUMN GRAPHICS 2

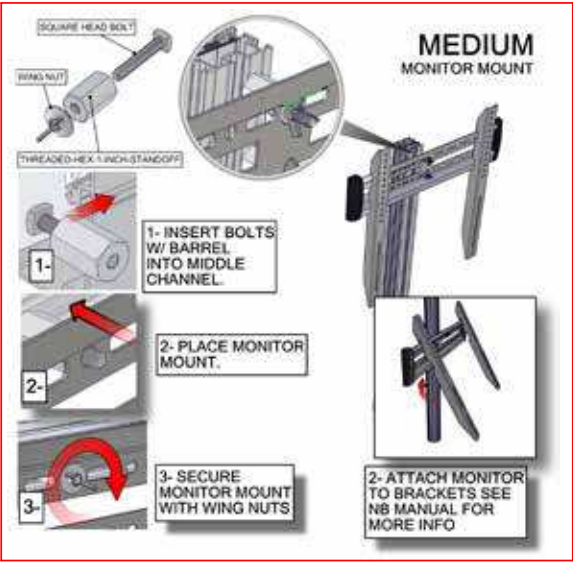
BOM Table		
Code	#	Description
HP-K-23-G-B1	1	GRAPHIC( B1 ) 81.06 w X 94.37 h finished size Dye-sub print on 8oz. Power Stretch, with FCE-2 silicone beading sewn to back perimeter, corner pull sewn in bottom right corner
HP-K-23-G-B2	1	GRAPHIC( B2 ) 20.04 w X 94.37 h finished size Dye-sub print on 8oz. Power Stretch, with FCE-2 silicone beading sewn to back perimeter, corner pull sewn in bottom right corner
HP-K-23-G-B3	1	GRAPHIC( B3 ) 81.06 w X 94.37 h finished size Dye-sub print on 8oz. Power Stretch, with FCE-2 silicone beading sewn to back perimeter, corner pull sewn in bottom right corner
HP-K-23-G-B4	1	GRAPHIC( B4 ) 20.04 w X 94.37 h finished size Dye-sub print on 8oz. Power Stretch, with FCE-2 silicone beading sewn to back perimeter, corner pull sewn in bottom right corner
HP-K-23-G-B5	1	GRAPHIC( B5 ) 23.5 w X 94.37 h finished size Dye-sub print on 8oz. Power Stretch, with FCE-2 silicone beading sewn to back perimeter, corner pull sewn in bottom right corner
HP-K-23-G-B6	1	GRAPHIC( B6 ) 23.5 w X 94.37 h finished size Dye-sub print on 8oz. Power Stretch, with FCE-2 silicone beading sewn to back perimeter, corner pull sewn in bottom right corner

LEAVE B1 OFF TELL AFTER  
THE SHELF UNIT IS IN PLEASE

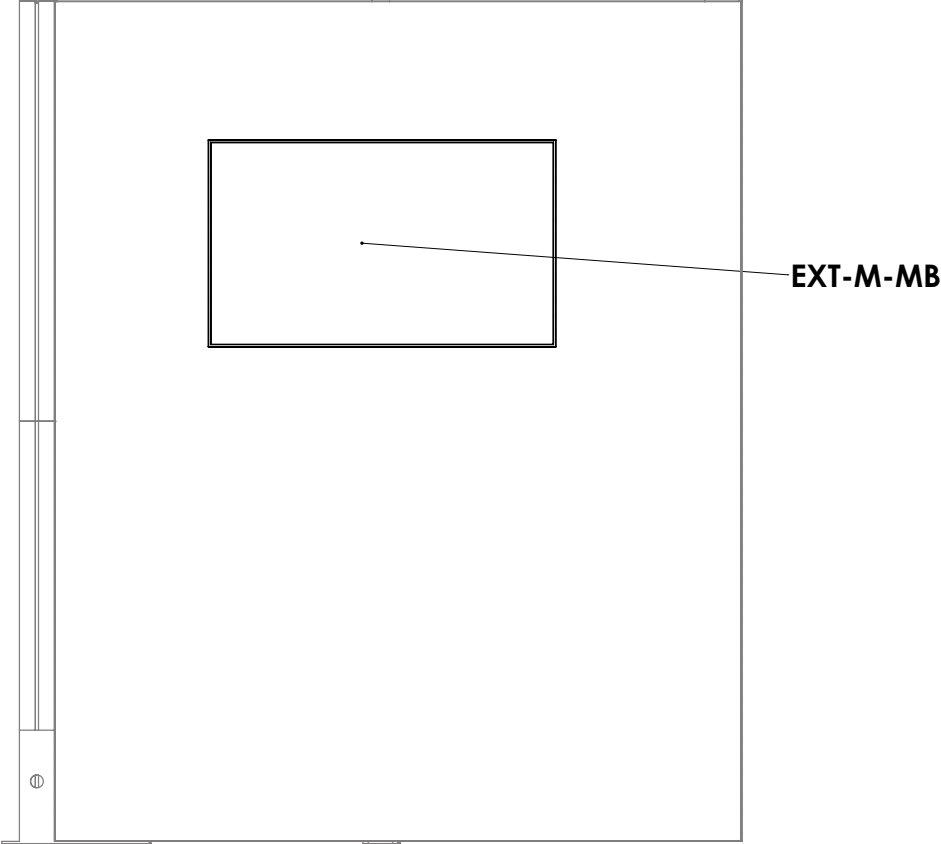


Code	#	Description
EXT-M-MB	1	EXTRUSION MOUNTED MEDIUM MONITOR BRACKET AND MOUNTING HARDWARE

# MONITOR MOUNT X 2

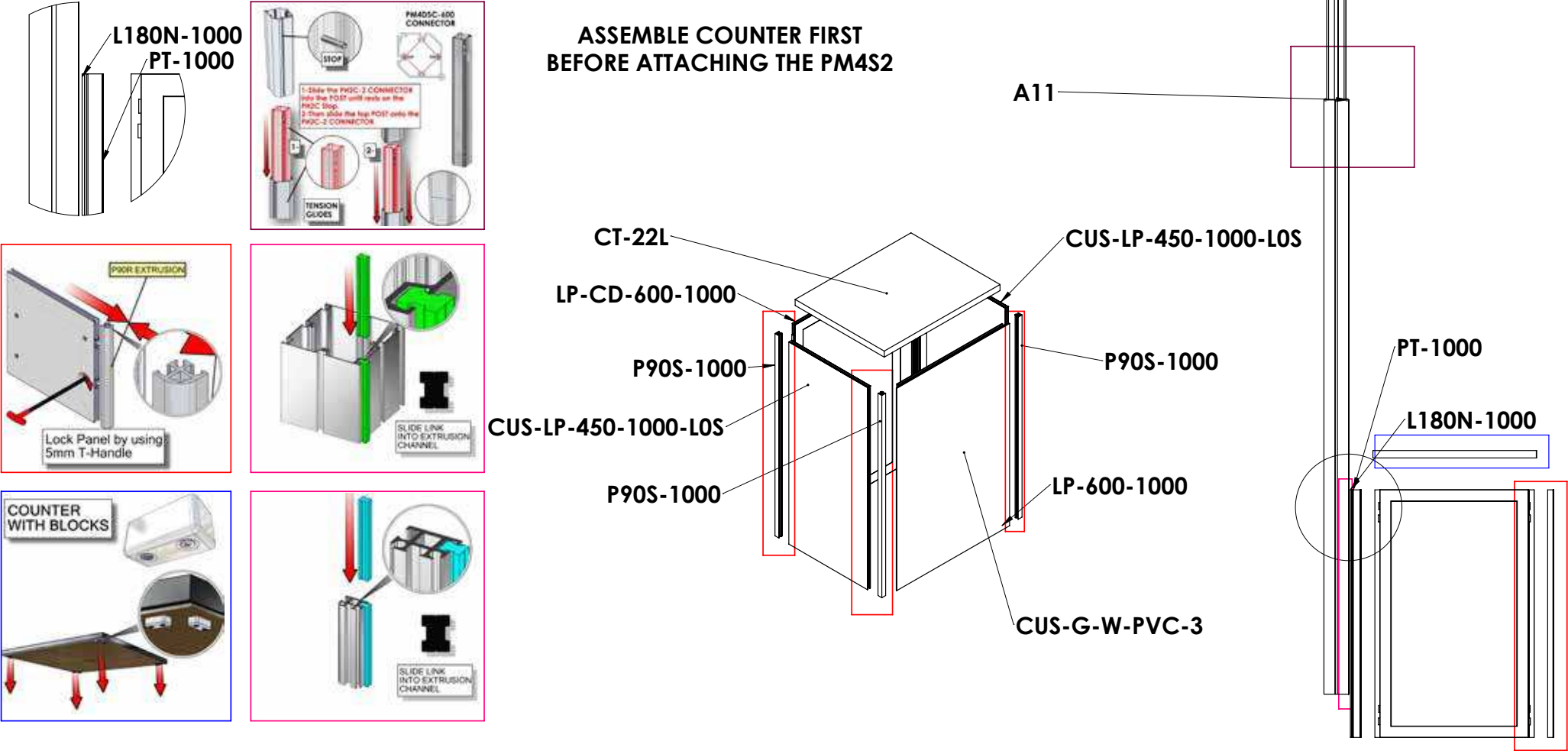


ATTACH THE MONITOR MOUNT  
TO THE HARDWARE THAT  
WAS INSTALLED EARLIER



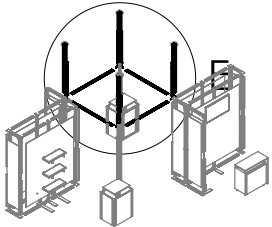
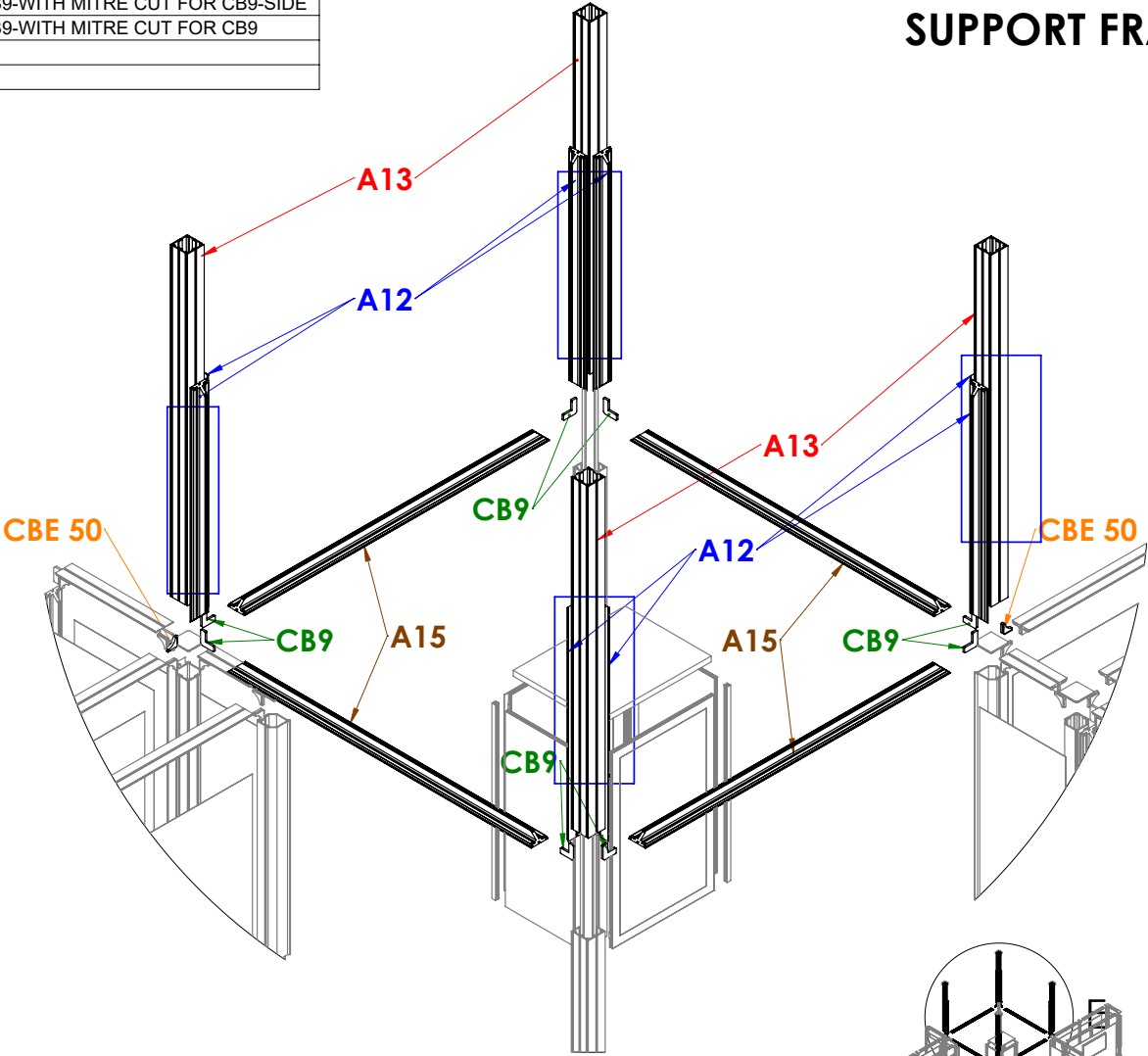
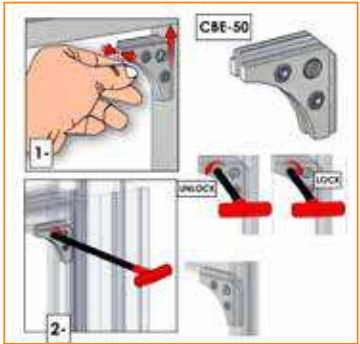
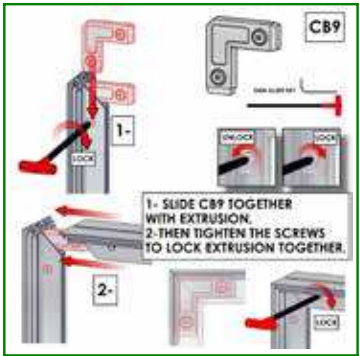
Code	#	Description
CUS-G-W-PVC-3	1	GRAPHIC( C1 ) 25.31 w X 39.37 h finished size, 24.84 w X 38.9 h visual size, UV printed on 3mm White PVC
A11	1	2400MM PM4S2-2400 EXTRUSION-WITH STOP AT 315MM-WITH STOP AT 315MM
A7	1	PM4DSC-600 - 600MM 4-WAY INTERNAL CONNECTION EXTRUSION W/ 8 TENSION GLIDE
CUS-LP-450-1000-L0S	2	450MM X 1000MM LOCK PANEL (Color TBD)
L180N-1000	1	1000MM LENGTH OF L180N EXTRUSION
P90S-1000	3	1000MM LENGTH OF P90S EXTRUSION
PT-1000	1	1000MM LENGTH OF PT EXTRUSION
CT-22L	1	660MM X 510MM 30MM LAMINATED ULTRALIGHT COUNTER TOP
LP-CD-600-1000	1	600MM(W) X 1000MM(V) LOCK CABINET DOOR PANEL (COLOR TBD)
LP-600-1000	1	600MM X 1000MM LOCK PANEL-WITH LOCKS 2 SIDES (Color TBD)

# CORNER COUNTER X 2



Code	#	Description
A13	4	1800MM PM4S2-1800 EXTRUSION-WITH STOP AT 315MM-WITH STOP AT 315MM
A12	8	PHFC4-1200 EXTRUSION-WITH MITRE CUT FOR CB9-WITH MITRE CUT FOR CB9-SIDE
A15	4	PHFC4-1800 EXTRUSION-WITH MITRE CUT FOR CB9-WITH MITRE CUT FOR CB9
CB9	8	90 DEGREE JOINER
CBE-50	2	CORNER PRESSURE FIT CONNECTOR

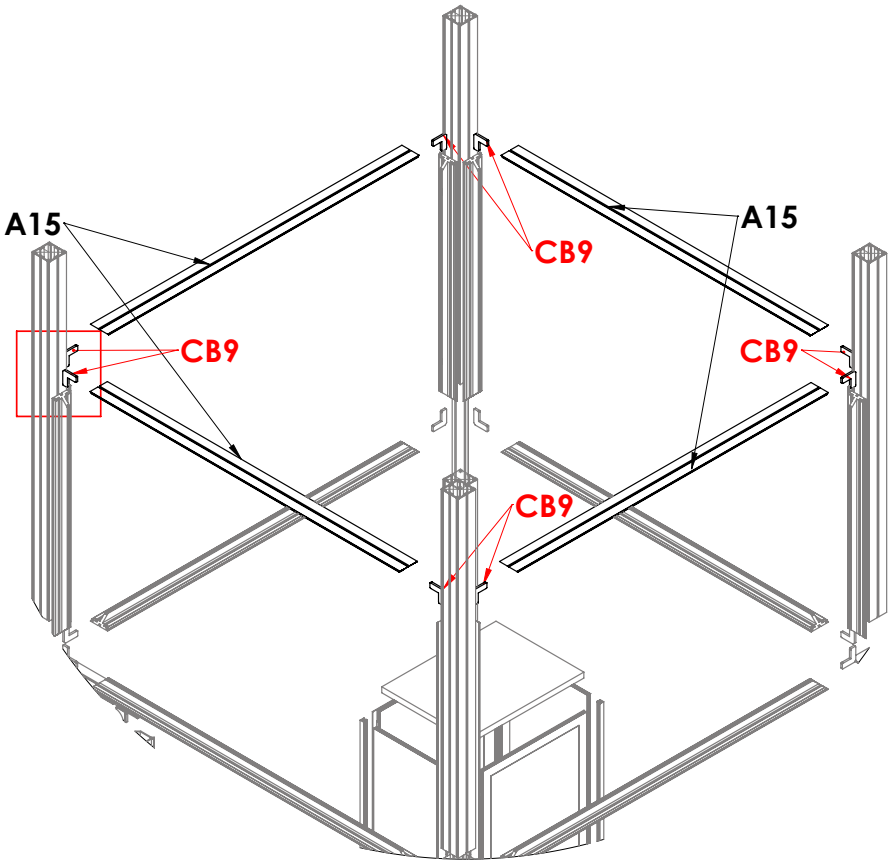
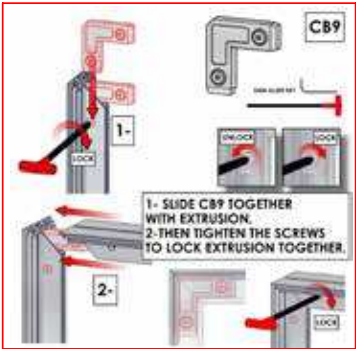
# TOP GRAPHICS SUPPORT FRAME



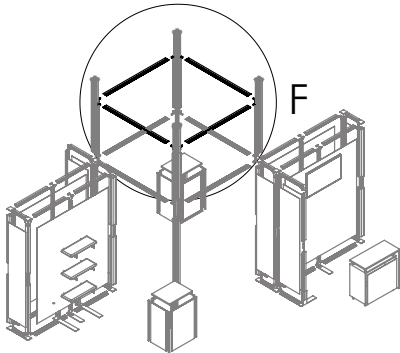
HAVE SOMEONE HAND UP PARTS  
AS SOME ONE ASSEMBLE THE FRAME

Code	#	Description
CB9	8	90 DEGREE JOINER
A15	4	PHFC4-1800 EXTRUSION-WITH MITRE CUT FOR CB9-WITH MITRE CUT FOR CB9

TOP OF GRAPHIC FRAME



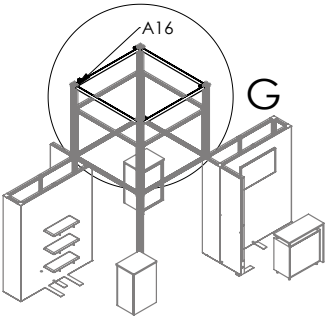
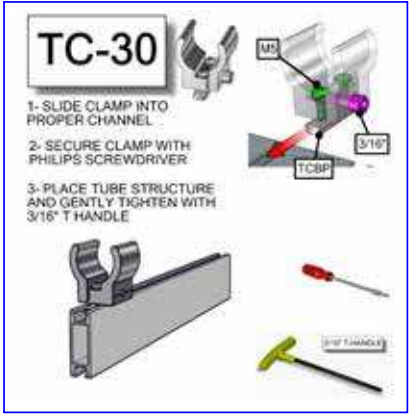
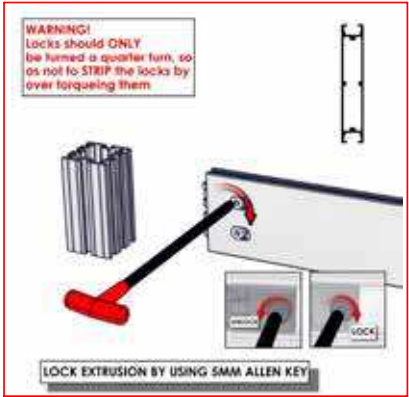
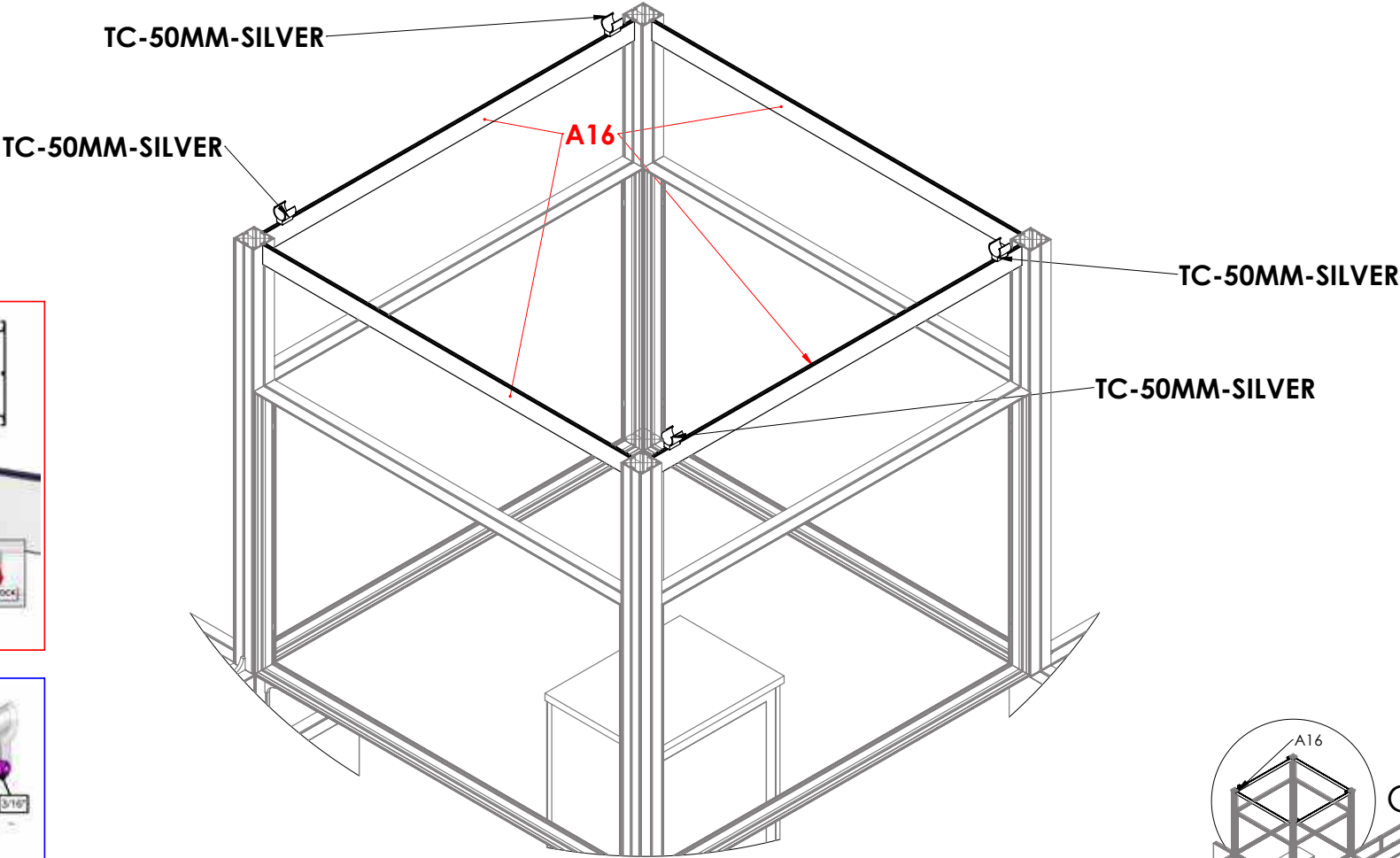
HAVE SOMEONE HAND UP PARTS  
AS SOME ONE ASSEMBLE THE FRAME





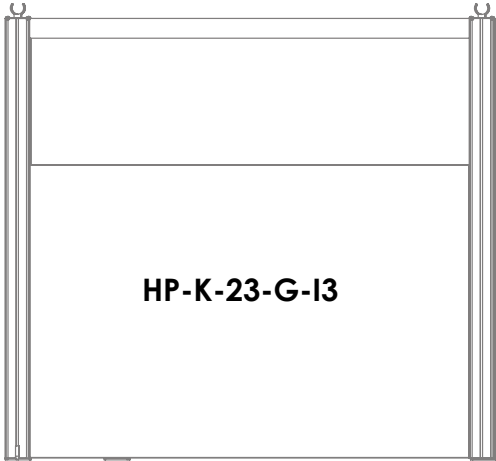
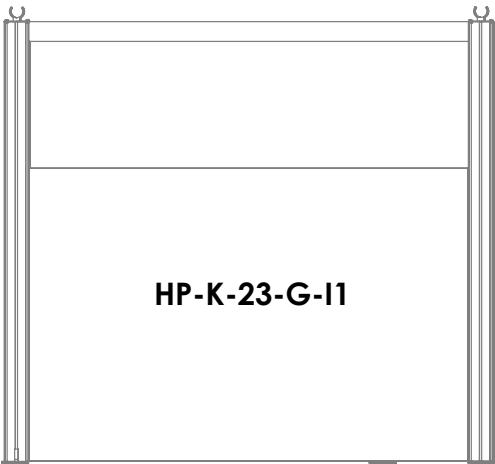
Code	#	Description
TC-50MM-SILVER	4	SILVER ANODIZED FINISH 50MM TUBE CLAMP
A16	4	1800MM LENGTH OF PH2 EXTRUSION-WITH CAM LOCKS-WITH CAM LOCKS

SQUARE FRAME  
SUPPORT

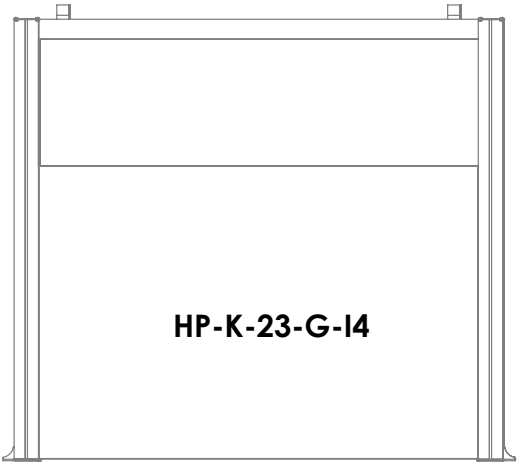
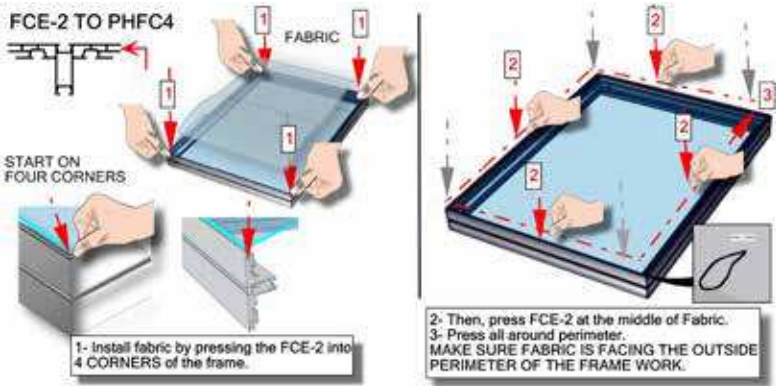


Code	#	Description
HP-K-23-G-I1	1	GRAPHIC( I1 ) 70.75 w X 47.13 h finished size Dye-sub print on 8oz. Power Stretch, with FCE-2 silicone beading sewn to back perimeter, corner pull sewn in bottom right corner
HP-K-23-G-I2	1	GRAPHIC( I2 ) 70.75 w X 47.13 h finished size Dye-sub print on 8oz. Power Stretch, with FCE-2 silicone beading sewn to back perimeter, corner pull sewn in bottom right corner
HP-K-23-G-I3	1	GRAPHIC( I3 ) 70.75 w X 47.13 h finished size Dye-sub print on 8oz. Power Stretch, with FCE-2 silicone beading sewn to back perimeter, corner pull sewn in bottom right corner
HP-K-23-G-I4	1	GRAPHIC( I4 ) 70.75 w X 47.13 h finished size Dye-sub print on 8oz. Power Stretch, with FCE-2 silicone beading sewn to back perimeter, corner pull sewn in bottom right corner

**UPPER  
GRAPHICS  
INSIDE**



**HAVE TWO PEOPLE INSTALL THE GRAPHICS**

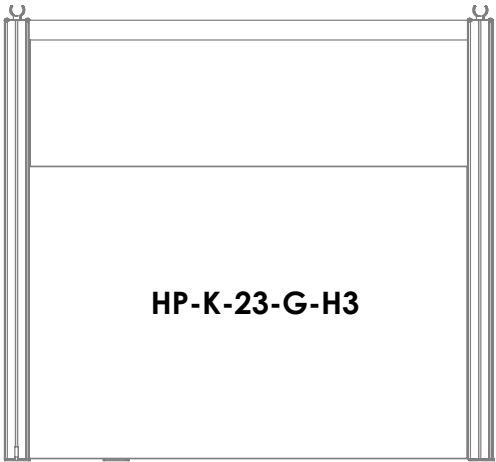
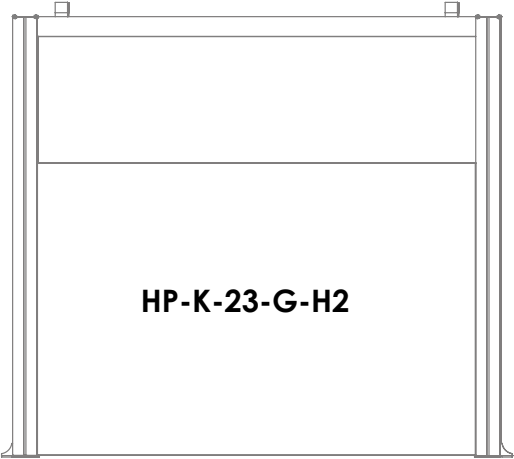
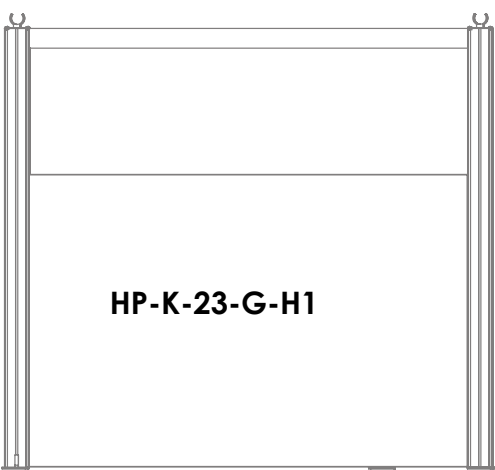


Code	#	Description
HP-K-23-G-H1	1	GRAPHIC( H1 ) 70.75 w X 47.13 h finished size Dye-sub print on 8oz. Power Stretch, with FCE-2 silicone beading sewn to back perimeter, corner pull sewn in bottom right corner
HP-K-23-G-H2	1	GRAPHIC( H2 ) 70.75 w X 47.13 h finished size Dye-sub print on 8oz. Power Stretch, with FCE-2 silicone beading sewn to back perimeter, corner pull sewn in bottom right corner
HP-K-23-G-H3	1	GRAPHIC( H3 ) 70.75 w X 47.13 h finished size Dye-sub print on 8oz. Power Stretch, with FCE-2 silicone beading sewn to back perimeter, corner pull sewn in bottom right corner
HP-K-23-G-H4	1	GRAPHIC( H4 ) 70.75 w X 47.13 h finished size Dye-sub print on 8oz. Power Stretch, with FCE-2 silicone beading sewn to back perimeter, corner pull sewn in bottom right corner

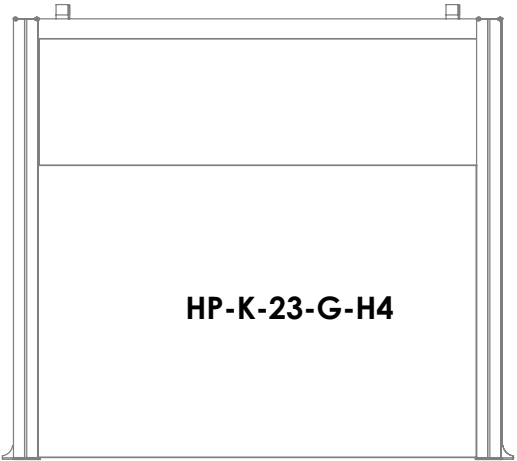
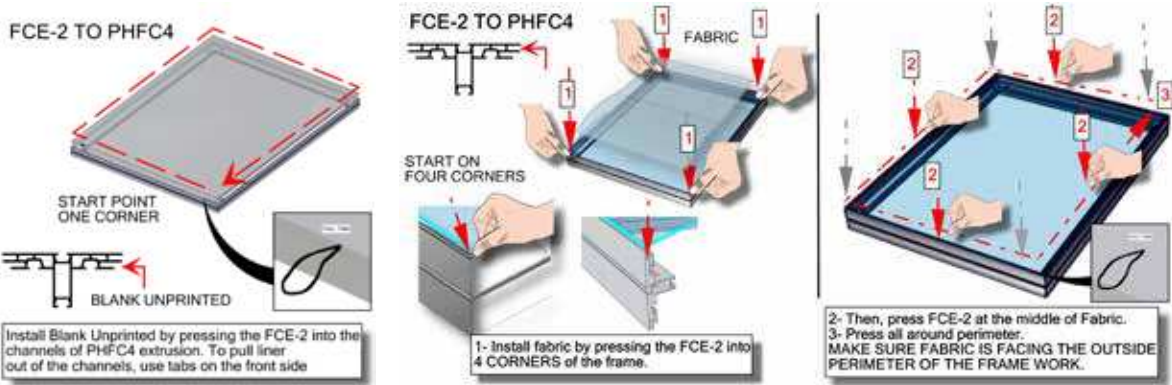
UPPER

GRAPHICS

OUTSIDE



HAVE TWO PEOPLE INSTALL THE GRAPHICS



# LABELING DIAGRAM FOR HP-K-23-SQU

## SET UP INSTRUCTIONS:

1. CONNECT BOTTOM AND TOP TUBES FOLLOWING THE LABELS
2. CONNECT SIDE TUBES
3. CLEAN THE FRAME AND PLACE THEM ON CLEAN PLACE
4. CAREFULLY REMOVE FABRIC COVER FROM BAG
5. PLACE COVER AROUND THE BOTTOM OF THE FRAME
6. PULL COVER CAREFULLY UP TO THE TOP
7. CLOSE ALL ZIPPERS
8. ADJUST FABRIC AROUND THE FRAME
9. CONNECT CABLE HARNESS TO THE EYEBOLTS
10. COMPLETELY TIGHTEN THREADED CONNECTORS

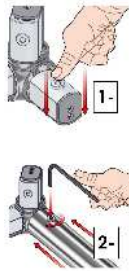
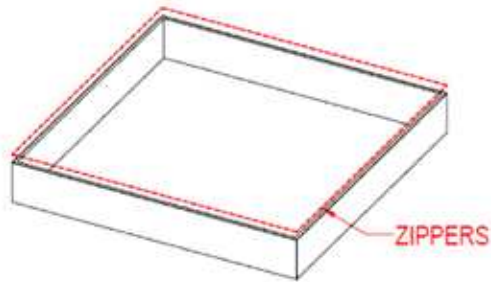
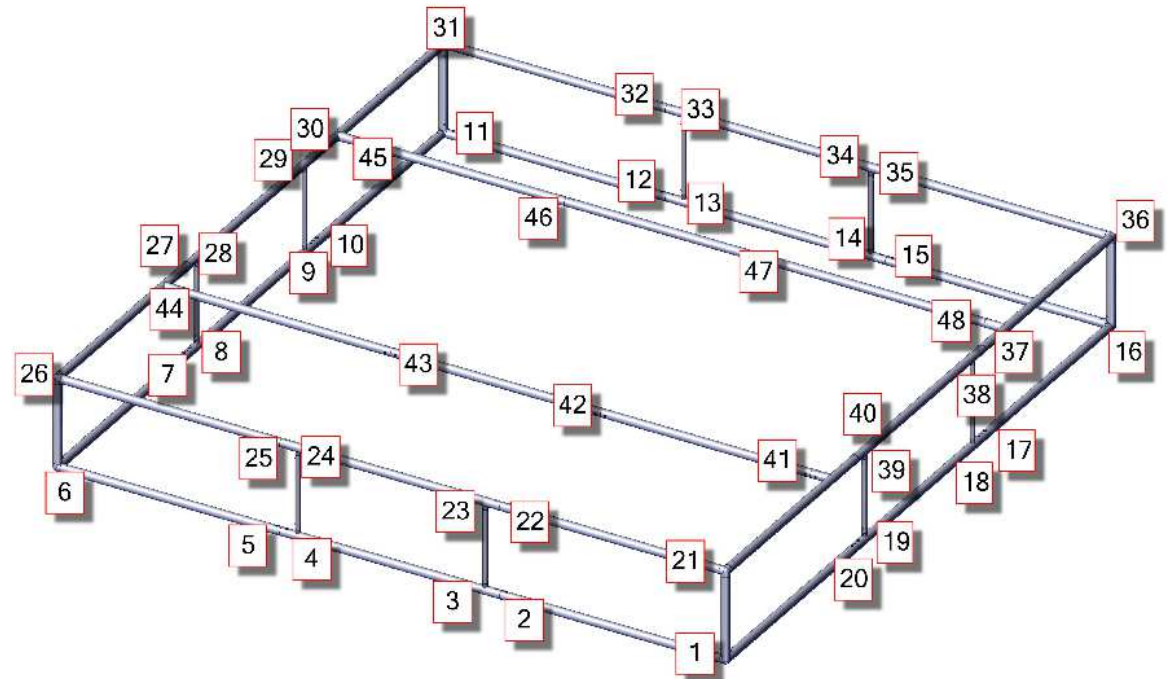
## BREAK DOWN INSTRUCTIONS:

REVERSE SET-UP STEPS TO BREAKDOWN FRAME

## FABRIC CARE INSTRUCTIONS:

1. UNZIP COVER ZIPPERS
2. CAREFULLY REMOVE FABRIC COVER
3. CLOSE ALL ZIPPERS
4. FOLD OR ROLL NEATLY
5. PLACE FABRIC IN COVER BAG

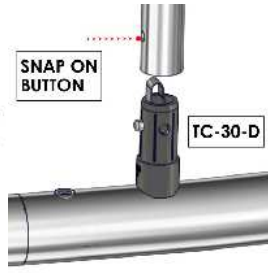
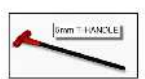
CONNECT SPLITS LABELED:  
HPK-23-T41 THROUGH HPK-23-T48  
AFTER GRAPHIC IS ON THE FRAME



ES50-3W

STEP 1:  
SLIDE TIE JOINER INTO THE  
TUBE AND SO THE HEX  
SCREW SITS IN THE HOLE  
ON THE JOINER

STEP 2:  
TIGHTEN THE HEX SCREW SO  
THE JOINER SEPARATES  
AND  
USE TIEING ALONG  
THE INNER OF THE TUBING  
LOCKING TIE JOINER AND  
TUBING TOGETHER



Code	#	Description
SQU-1402-G-HP-K-23	1	GRAPHIC( D1 ) 14'W X 2'H HANGING SQUARE STRUCTURE SINGLE SIDED GRAPHIC
SQU-1402-HP-K-23	1	14'W X 2'H HANGING SQUARE STRUCTURE HARDWARE

**SQUARE GRAPHICS STRUCTURE  
MOUNTING**

**HAVE 4 PEOPLE LIFT THE GRATHIC STRUCTURE  
INTO PLACE**



**PUT GRAPHIC ON  
BEFORE LIFTING  
INTO PLACE**

**SQU-1402-G-HP-K-23**

**SQU-1402-HP-K-23**

