

# Hybrid Pro 20ft Modular Backwall Kit 22

## HP-K-22

Hybrid Pro™ Modular Kit 22 is a dynamic modular exhibit that features an 8' tall backwall, two sidewalls, six shelves for small product display and three monitor mounts that holds a medium sized monitor. Push-fit SEG fabric graphics that are easy to apply to the backwall and the interior and exterior facing side walls.



Hybrid pro counters are optional  
not included at base price

## features and benefits:

- Silver aluminum extrusion frames (3)
- SEG push-fit fabric graphics (5)
- Shelf color options: Silver, Black, Mahogany, Natural
- Medium monitor bracket holds 32-55" LCD\*, max weight: 80 lbs

- Ships freight in a roto-molded protective shipping case
- Lifetime hardware warranty against manufacturer defects

## dimensions:

Hardware

Graphic

Assembled unit:  
234.69" w x 95.45" h x 37.94" d  
5961.13mm(w) x 2424.43mm(h) x  
983.68mm(d)

Refer to related graphic template for more information.

Approximate weight:  
348 lbs / 157.85kg

Shipping

## additional information:

Packing case(s):  
NCRATE

Graphic material:  
Dye-sublimation SEG push-fit fabric

Shipping dimensions:  
NCRATE  
60" l x 57" h x 48" d  
1524Mm(l) x 1448mm(h) x 1220mm(d)

When included in a larger kit, a different packaging solution will be listed to accommodate all contents of the kit. Individual packaging no longer provided.

Approximate total shipping weight: 573 lbs /  
260 kg

## Tabletop Colors:



silver black mahogany natural

3 person assembly recommended:



## Setup notes

1. Redesign of this exhibit without approval by manufacture may result in dangerous and unsafe structures. Manufacture disclaims any responsibility for redesigned exhibits it does not approve in writing.

2. Parts and components such as panels and extrusions are manufactured to metric sizing. Where ever possible sizes have been noted in feet and inches as well as in metric. Below is the imperial to metric sizing table as a reference. 'Nominal' refers to approximate sizes.

### IMPERIAL TO METRIC SIZES

8' Nominal = 94 1/2" or 2400mm Actual

4' Nominal = 47 1/4" or 1200mm Actual

3' Nominal = 35 7/16" or 900mm Actual

2' Nominal = 23 5/8" or 600mm Actual

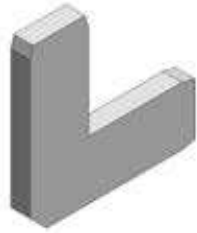
1' Nominal = 11 13/16" or 300mm Actual

# Included In Your Kit

Tools, Components, & Connectors



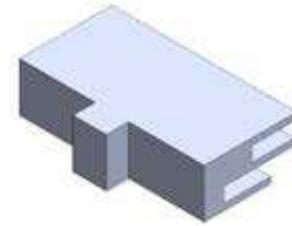
HEX KEY SET x1



CB9 x4



CBE-50 x32



FC-50-SPCR x20



LN114-S2-650 x5



SW-FOOT-650-LN x2



PH4-300-TG x5



PHFC4-600-L-MCB9-x2



PHFC4-900-L-L x12



PHFC4-1200-L-MCB9x4



IB2-x2



PM2S2-1200-A165-Nx10



PM4DSC-600x2

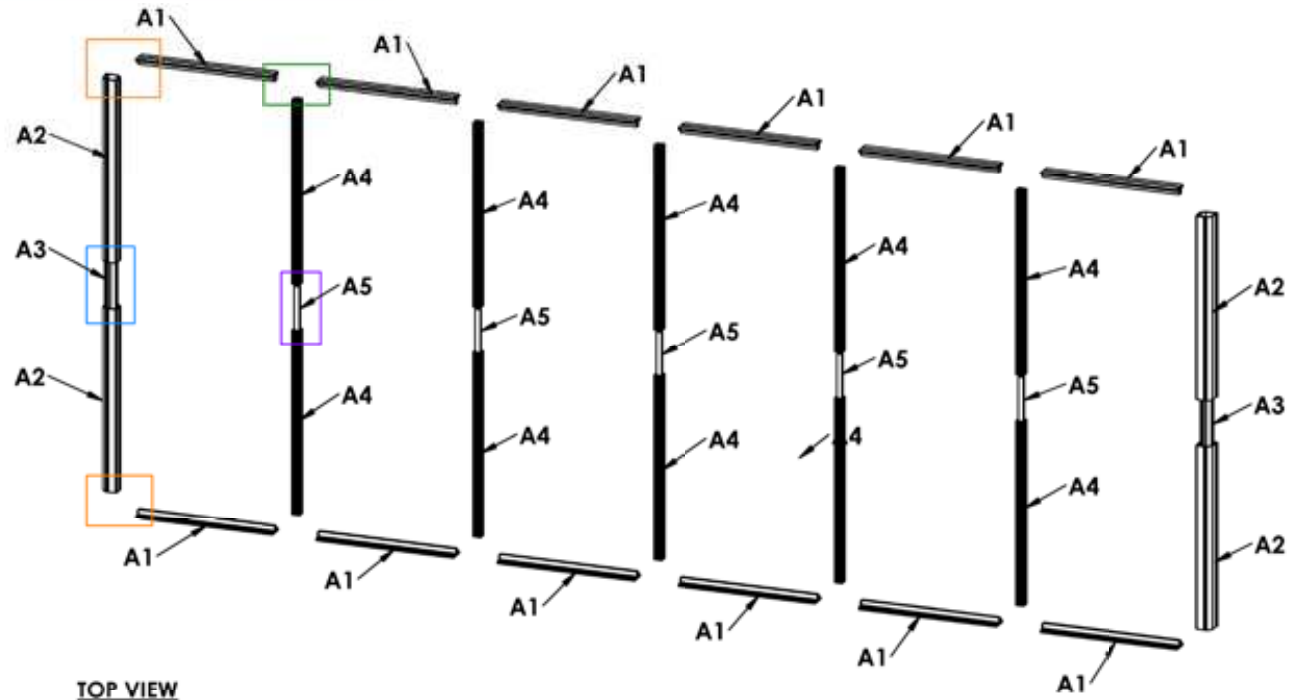
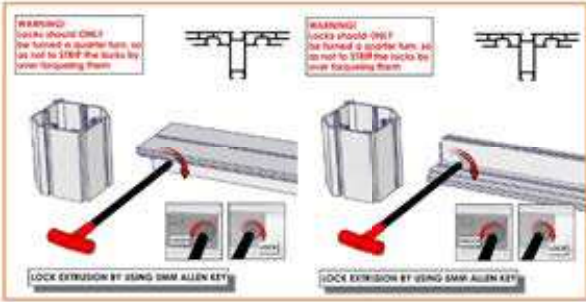


PMFC4-90-1193-A315x4



PMFC4-90-CAP x4

Code	#	Description
A4	10	PM2S2-1200 EXTRUSION-WITH NUT INSERT-WITH STOP AT 165MM
A1	12	PHFC4-900 EXTRUSION-WITH CAM LOCKS-WITH CAM LOCKS
A5	5	300MM PH4 EXTRUSION WITH TENSION GLIDES
A2	4	1193MM LENG-T OF PMF4-90 EXTRUSION-WITH STOP AT 315MM
A3	2	PM4DSC-600 - 600MM 4-WAY INTERNAL CONNECTION EXTRUSION W/ 8 TENSION GLIDE



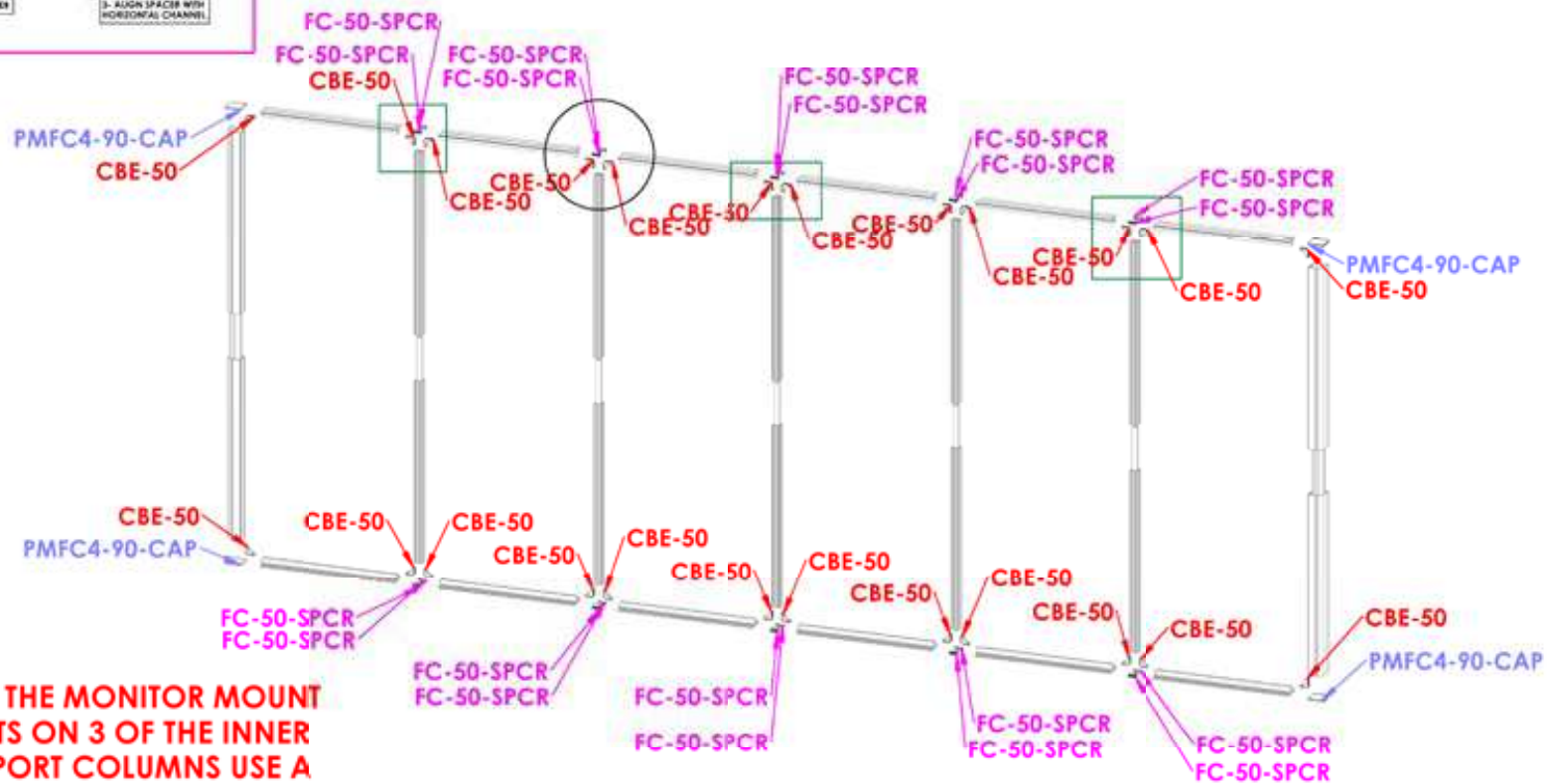
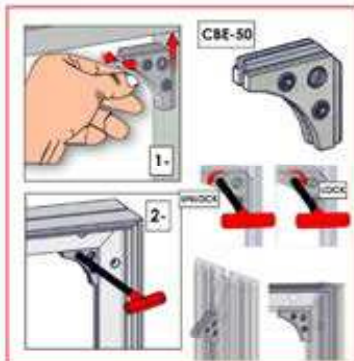
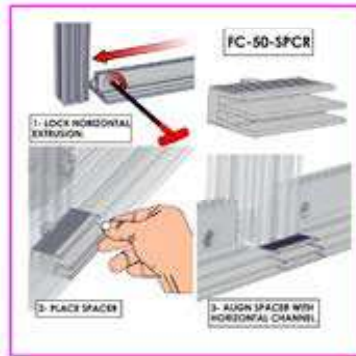
## ASSEMBLE MAIN FAME



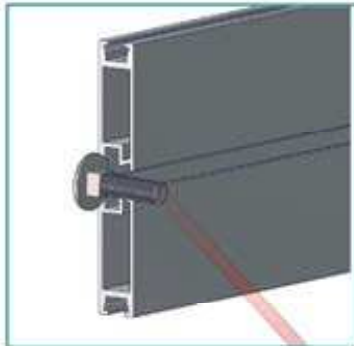
- BUILD FRAMES ON FLAT GROUND
- GATHER ALL PARTS NEEDED
- LAY THEM OUT IN PLACE BEFORE BUILDING

Code	#	Description
CBE-50	24	CORNER PRESSURE FIT CONNECTOR
FC-50-SPCR	20	FC-50-SPCR - FRAME CHANNEL SPACER IN ABS
PMFC4-90-CAP	4	INJECTION MOLDED PLASTIC END CAP FOR PMFC4-90

## ATTACH CORNER SUPPORTS & SPACERS

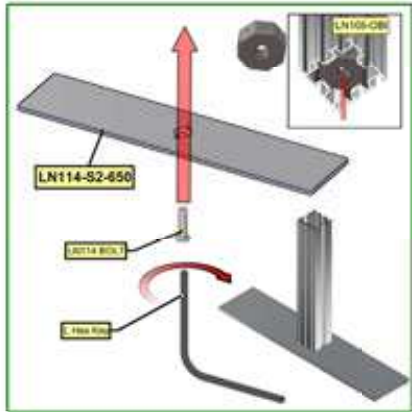


SLID THE MONITOR MOUNT BOLTS ON 3 OF THE INNER SUPPORT COLUMNS USE A NUT TO LOCK IN PLACE UNTIL MOUNTING THE MONITOR

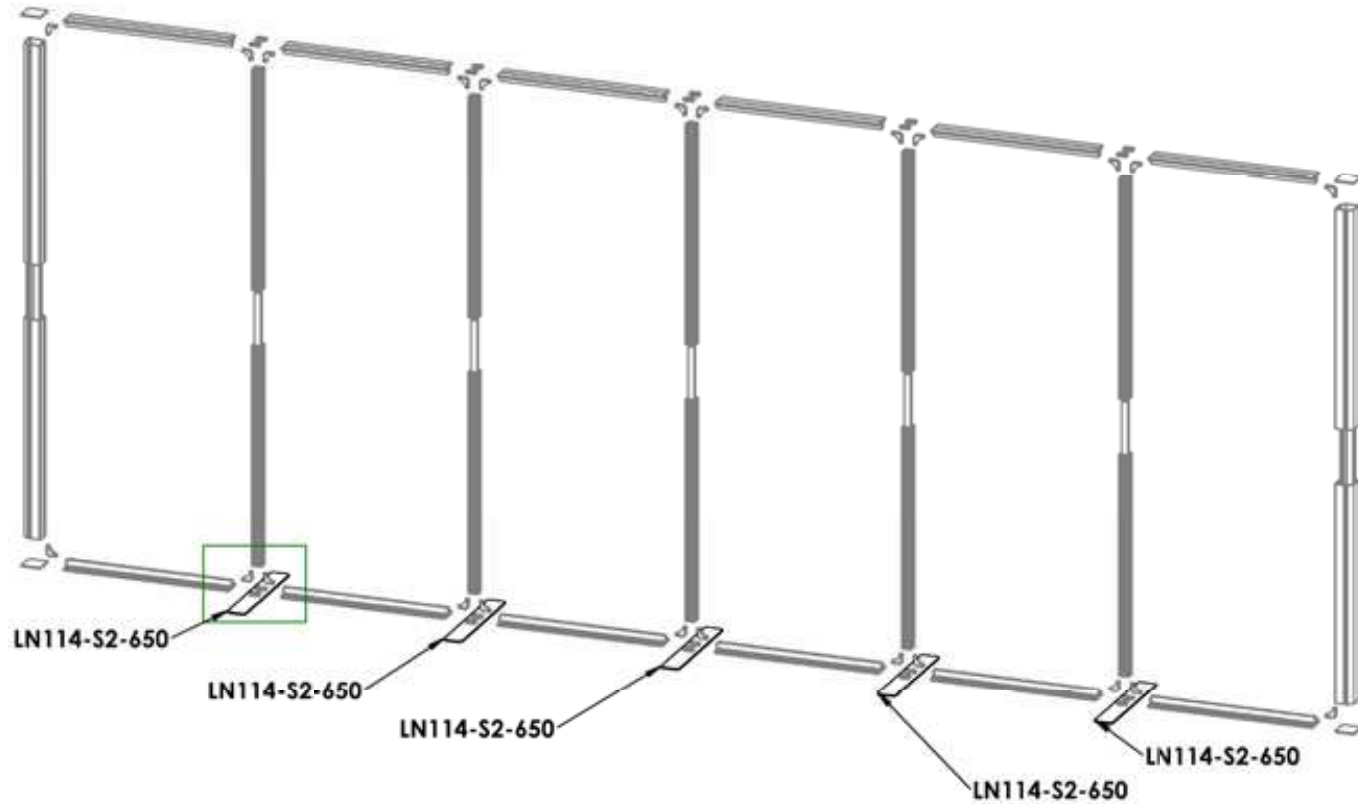


Code	#	Description
LN114-S2-650	5	FOOT PLATE , 650MM LENGTH

## ATTACH BASE PLATES



HAVE TWO OR MORE PEOPLE HELP  
STAND THIS UP AFTER FEET ARE INSTALLED

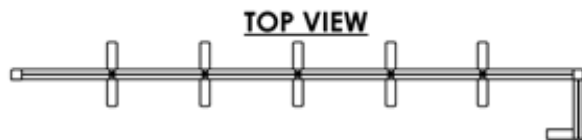
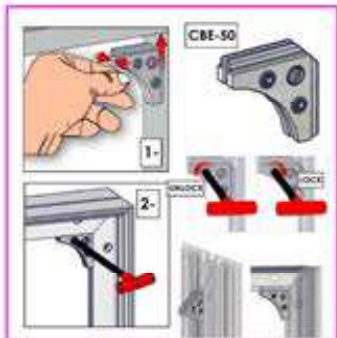
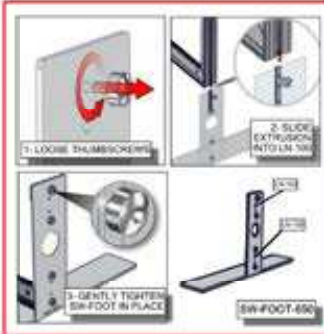
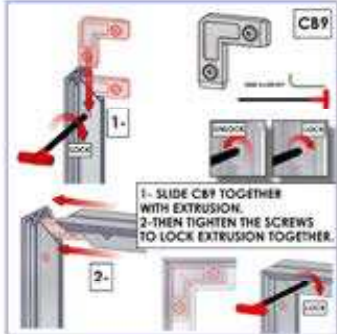
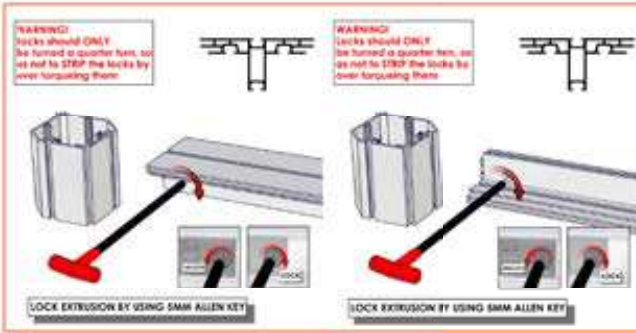


TOP VIEW

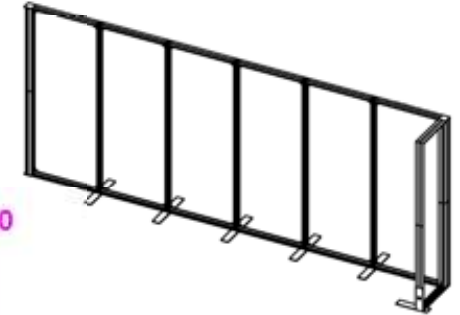
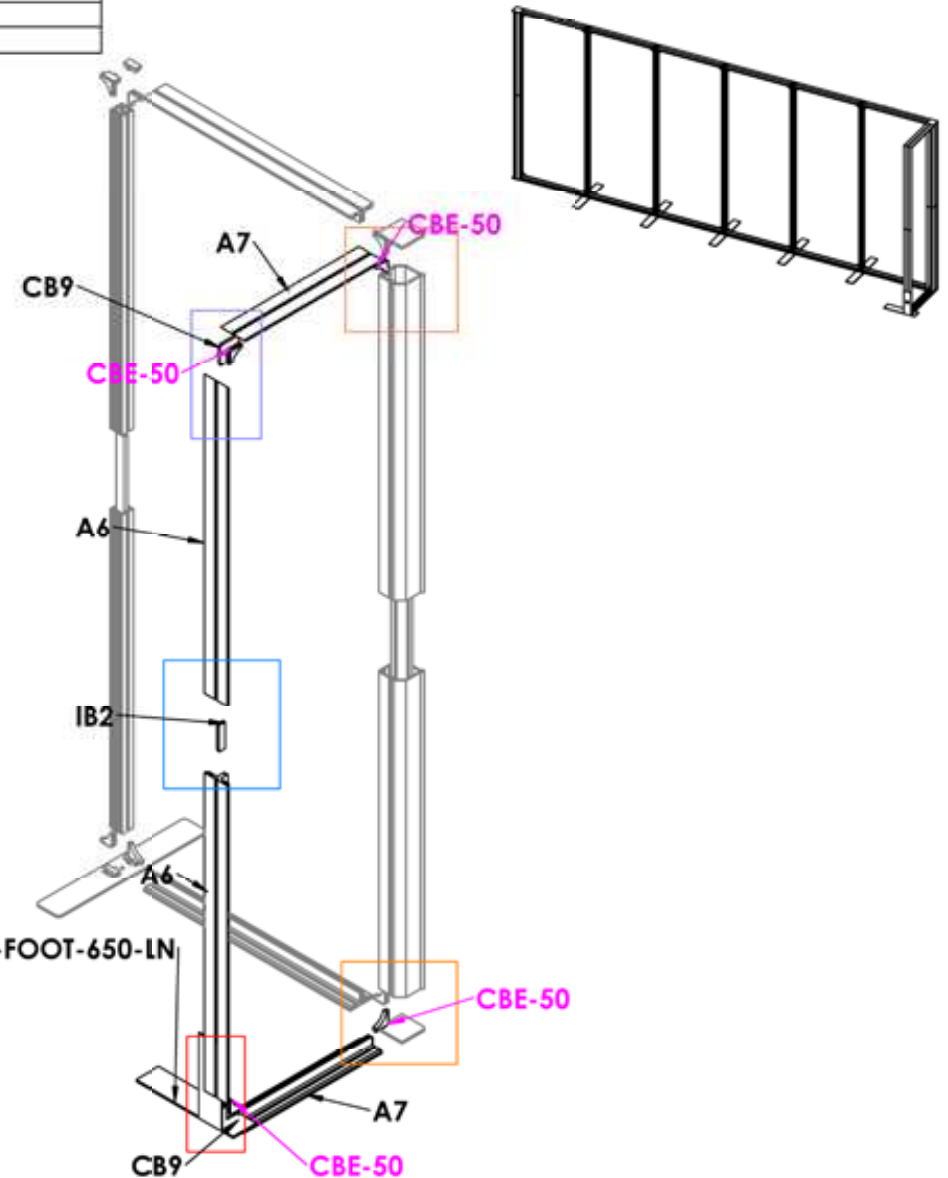




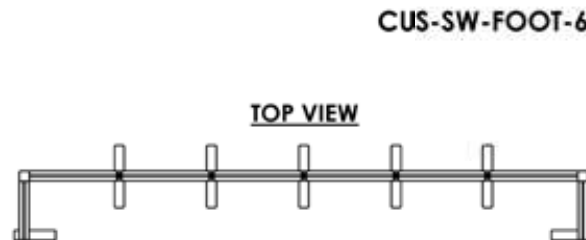
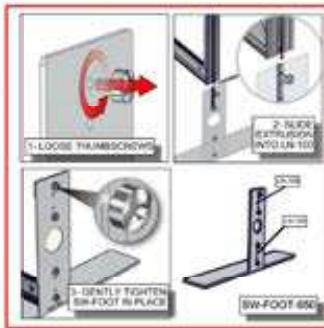
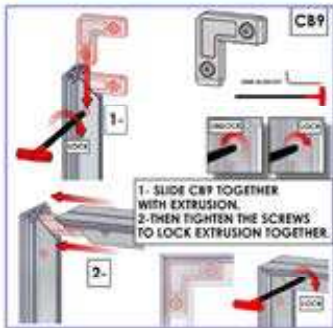
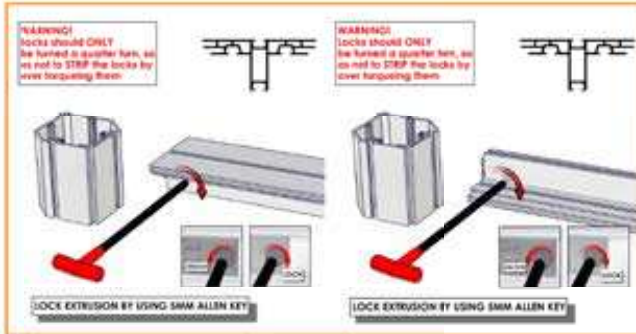
Code	#	Description
A7	2	PHFC4-630 EXTRUSION-WITH CAM LOCKS-WITH MITRE CUT FOR CB9
CB9	2	90 degree joiner
A6	2	PHFC4-1200 EXTRUSION-WITH IB2 LOCK HOLE-WITH MITRE CUT FOR CB9
CUS-SW-FOOT-650-LN	1	SMART WALL FOOT , CUT DOWN TO 425MM
IB2	1	JOINER BAR(NEW DESIGN)
CBE-50	4	CORNER PRESSURE FIT CONNECTOR



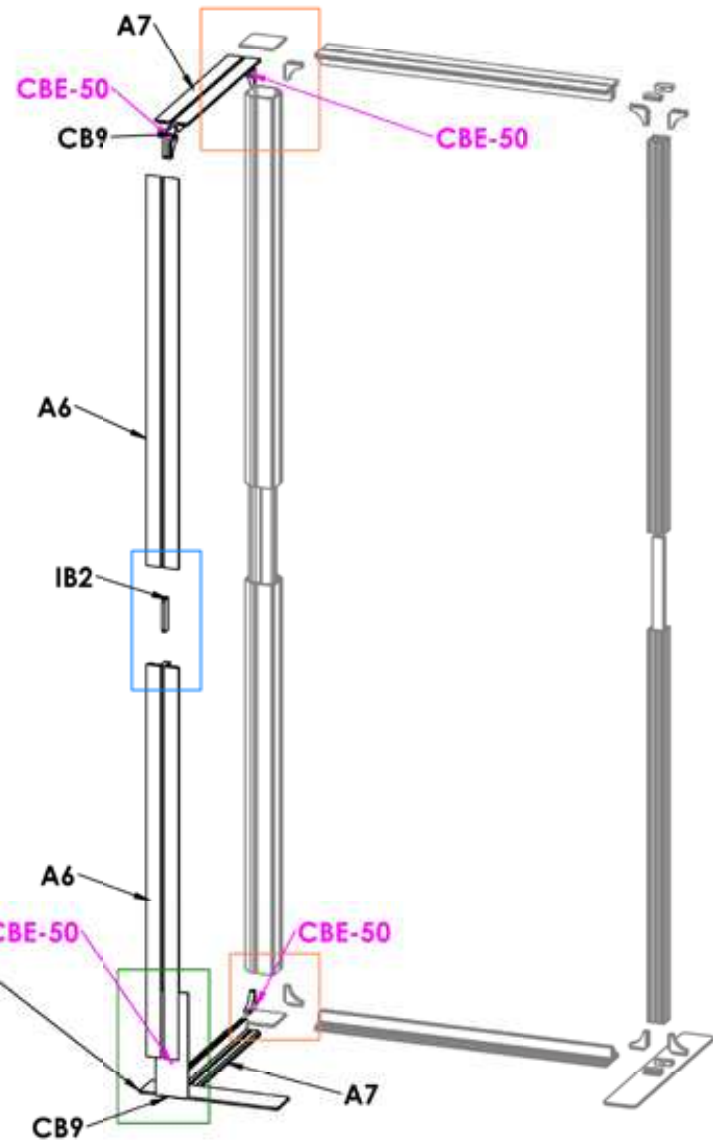
## ASSEMBLE RIGHT SIDE WALL



Code	#	Description
A6	2	PHFC4-1200 EXTRUSION-WITH IB2 LOCK HOLE-WITH MITRE CUT FOR CB9
A7	2	PHFC4-600 EXTRUSION-WITH CAM LOCKS-WITH MITRE CUT FOR CB9
IB2	1	JOINER BAR(NEW DESIGN)
CB9	2	90 degree joiner
CBE-50	4	CORNER PRESSURE FIT CONNECTOR
CUS-SW-FOOT-650-LN	1	SMART WALL FOOT , CUT DOWN TO 425MM

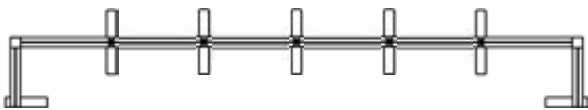
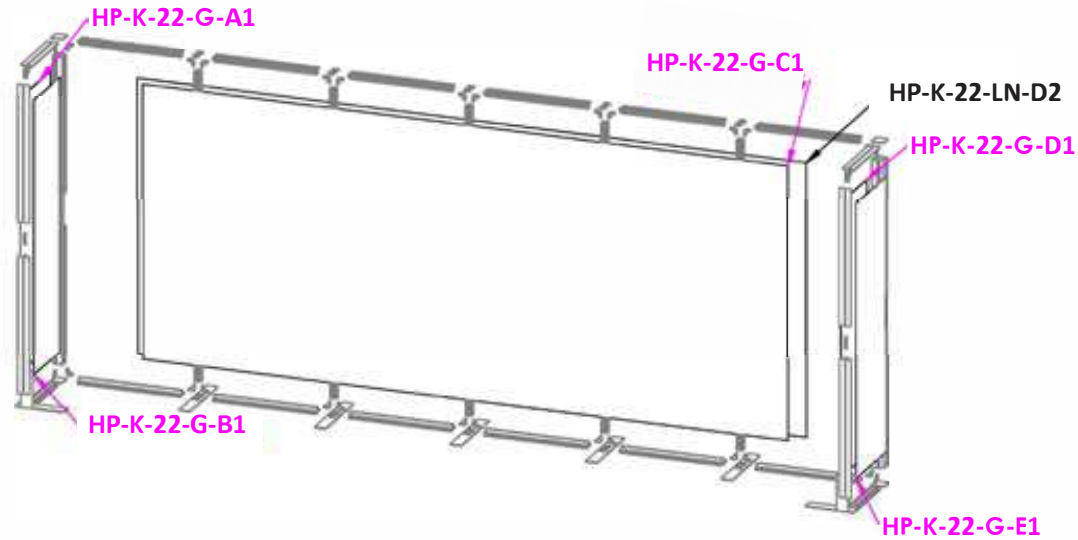
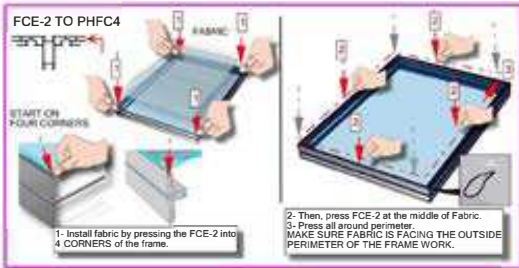
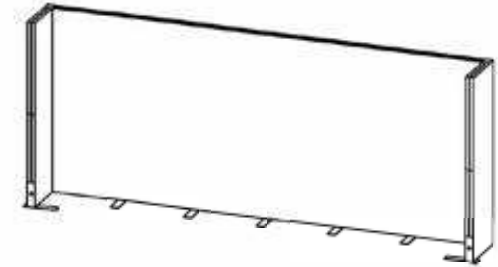


## ASSEMBLE LEFT SIDE WALL

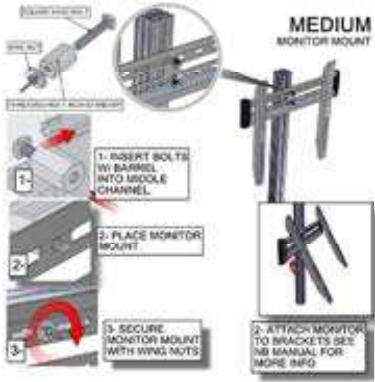




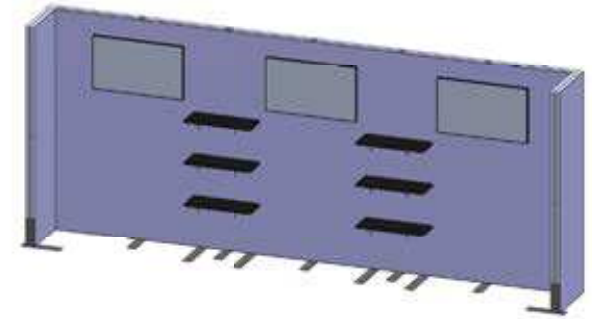
Code	#	Description
HP-K-22-LN-D2	1	LINER( D2 ) 230.67 w X 94.37 h finished size Opaque liner, with FCE-2 silicone beading sewn to back perimeter, corner pull sewn in bottom right corner
HP-K-22-G-A1	1	GRAPHIC( A1 ) 27.68 w X 94.37 h finished size Dye-sub print on 8oz. Power Stretch, with FCE-2 silicone beading sewn to back perimeter, corner pull sewn in bottom right corner
HP-K-22-G-B1	1	GRAPHIC( B1 ) 23.62 w X 94.37 h finished size Dye-sub print on 8oz. Power Stretch, with FCE-2 silicone beading sewn to back perimeter, corner pull sewn in bottom right corner
HP-K-22-G-C1	1	GRAPHIC( C1 ) 222.56 w X 94.37 h finished size Dye-sub print on 8oz. Power Stretch, with FCE-2 silicone beading sewn to back perimeter, corner pull sewn in bottom right corner
HP-K-22-G-D1	1	GRAPHIC( D1 ) 23.62 w X 94.37 h finished size Dye-sub print on 8oz. Power Stretch, with FCE-2 silicone beading sewn to back perimeter, corner pull sewn in bottom right corner
HP-K-22-G-E1	1	GRAPHIC( E1 ) 27.68 w X 94.37 h finished size Dye-sub print on 8oz. Power Stretch, with FCE-2 silicone beading sewn to back perimeter, corner pull sewn in bottom right corner



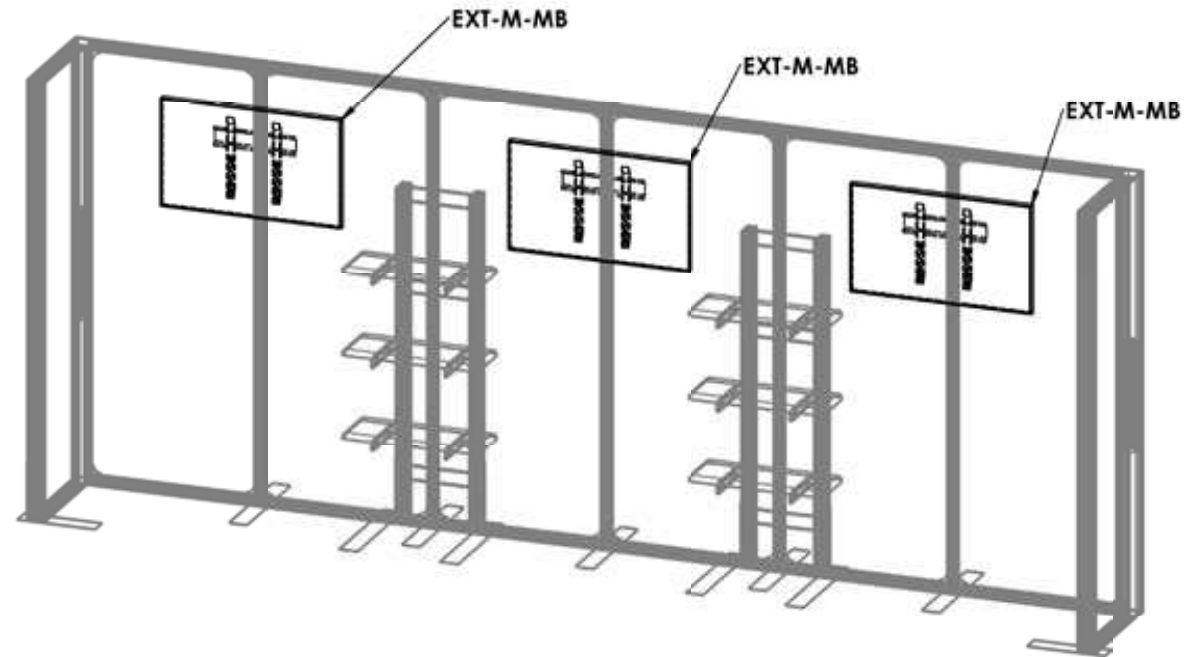
Code	#	Description
EXT-M-MB	3	EXTRUSION MOUNTED MEDIUM MONITOR BRACKET AND MOUNTING HARDWARE



## MONITOR MOUNT



THE BOLTS THAT WERE INSERTED IN THE 3 COLUMNS WILL ATTACH TO THE MONITOR MOUNTS THOUGH GRAPHICS



### TOP VIEW

