

Hybrid Pro 10ft Modular Backwall Kit 21

HP-K-21

Hybrid Pro™ Modular Kit 21 is a dynamic modular exhibit that features an 8' tall backwall, two sidewalls, six shelves for small product display and a central monitor mount that holds a medium sized monitor. Push-fit SEG fabric graphics that are easy to apply to the backwall and the interior and exterior facing side walls.



Hybrid pro counter is optional
not included at base price

features and benefits:

- Silver aluminum extrusion frames (3)
- SEG push-fit fabric graphics (5)
- Shelf color options: Silver, Black, Mahogany, Natural
- Medium monitor bracket holds 32-55" LCD*, max weight: 80 lbs

- Ships freight in a roto-molded protective shipping case
- Lifetime hardware warranty against manufacturer defects

dimensions:

Hardware

Graphic

Assembled unit:
118.6"w x 95.45"h x 27.68"d
2911mm(w) x 2424.5mm(h) x 703.1mm(D)

Refer to related graphic template for more information.

Approximate weight:
259 lbs / 117.49kg

Shipping

additional information:

Packing case(s):
SCRATE

Graphic material:
Dye-sublimation zipper pillowcase fabric
Dye-sublimation SEG push-fit fabric

Shipping dimensions: 57w x 59"h x 33"d

When included in a larger kit, a different packaging solution will be listed to accommodate all contents of the kit. Individual packaging no longer provided.

1448mm(l) x 1498mm(h) x 839mm(d)

Approximate total shipping weight: 358lbs / 162kg

Tabletop Colors:



silver black mahogany natural

2 person assembly recommended:



Setup notes

1. Redesign of this exhibit without approval by manufacture may result in dangerous and unsafe structures. Manufacture disclaims any responsibility for redesigned exhibits it does not approve in writing.

2. Parts and components such as panels and extrusions are manufactured to metric sizing. Where ever possible sizes have been noted in feet and inches as well as in metric. Below is the imperial to metric sizing table as a reference. 'Nominal' refers to approximate sizes.

IMPERIAL TO METRIC SIZES

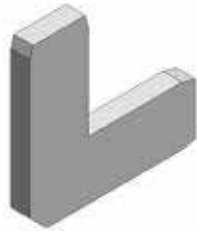
8' Nominal = 94 1/2" or 2400mm Actual
4' Nominal = 47 1/4" or 1200mm Actual
3' Nominal = 35 7/16" or 900mm Actual
2' Nominal = 23 5/8" or 600mm Actual
1' Nominal = 11 13/16" or 300mm Actual

Included In Your Kit

Tools, Components, & Connectors



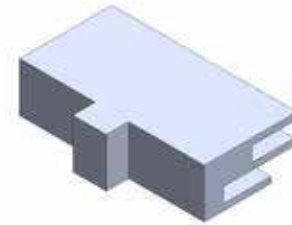
HEX KEY SET x1



CB9 x4



CBE-50 x20



FC-50-SPCR x8



LN114-S2-650 x2



SW-FOOT-650-LN x2



PH4-300-TG x2



PHFC4-800-L-Lx2



PHFC4-900-L-L x4



PHFC4-1200-L-MCB9x4



PHFC4-1200-x4



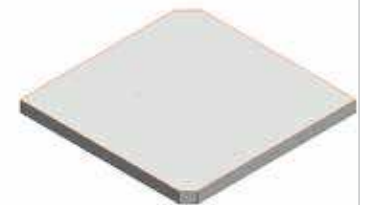
PM2S2-1200-A165-Nx4



PM4DSC-600x2



PMFC4-90-1193-A315x4



PMFC4-90-CAP x4

Included In Your Kit

Tools, Components, & Connectors



IB2 x2



CUS-PS2-800-L-L x1



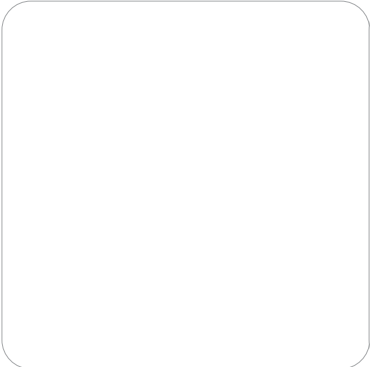
CODE x0



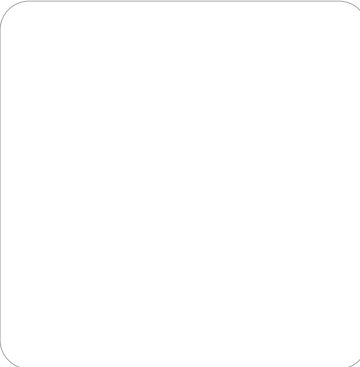
CODE x0



CODE x0



CODE x0



CODE x0



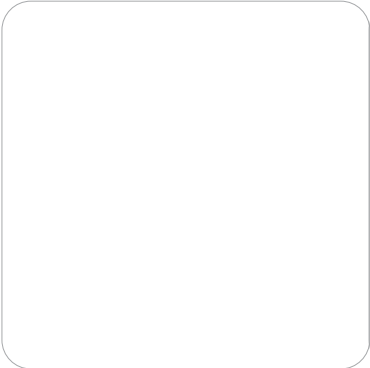
CODE x0



CODE x0



CODE x0



CODE x0



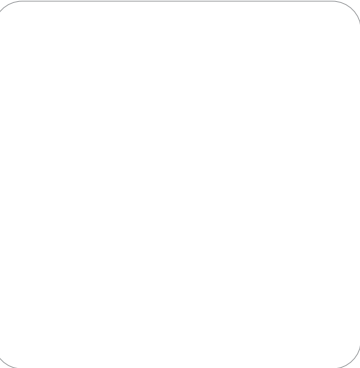
CODE x0



CODE x0



CODE x0

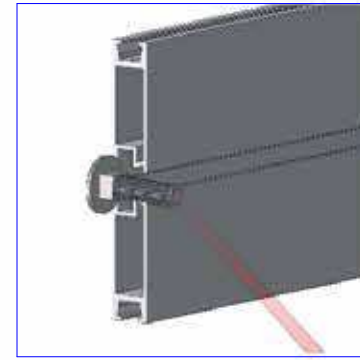


CODE x0

Code	#	Description
PMFC4-90-CAP	4	INJECTION MOLDED PLASTIC END CAP FOR PMFC4-90
A4	4	PHFC4-900 EXTRUSION-WITH CAM LOCKS-WITH CAM LOCKS
A2	2	1193MM LENGTH OF PMF4-90 EXTRUSION""
A1	2	1193MM LENGTH OF PMF4-90 EXTRUSION-WITH STOP AT 315MM
A3	2	PM4DSC-600 - 600MM 4-WAY INTERNAL CONNECTION EXTRUSION W/ 8 TENSION GLIDE
A5	2	800MM CUT DOWN FROM 900MM LENGTH OF PHFC4 EXTRUSION-WITH CAM LOCKS-WITH CAM LOCKS
A9	2	PM2S2-1200 EXTRUSION-WITH STOP AT 165MM-WITH NUT INSERT
A6	2	300MM PH4 EXTRUSION WITH TENSION GLIDES
A8	2	PM2S2-1200 EXTRUSION-WITH NUT INSERT-WITH STOP AT 165MM
A7	1	800MM CUT DOWN FROM 900MM LENGTH OF PS2 EXTRUSION-WITH CAM LOCKS-WITH CAM LOCKS

ASSEMBLE LAYING DOWN

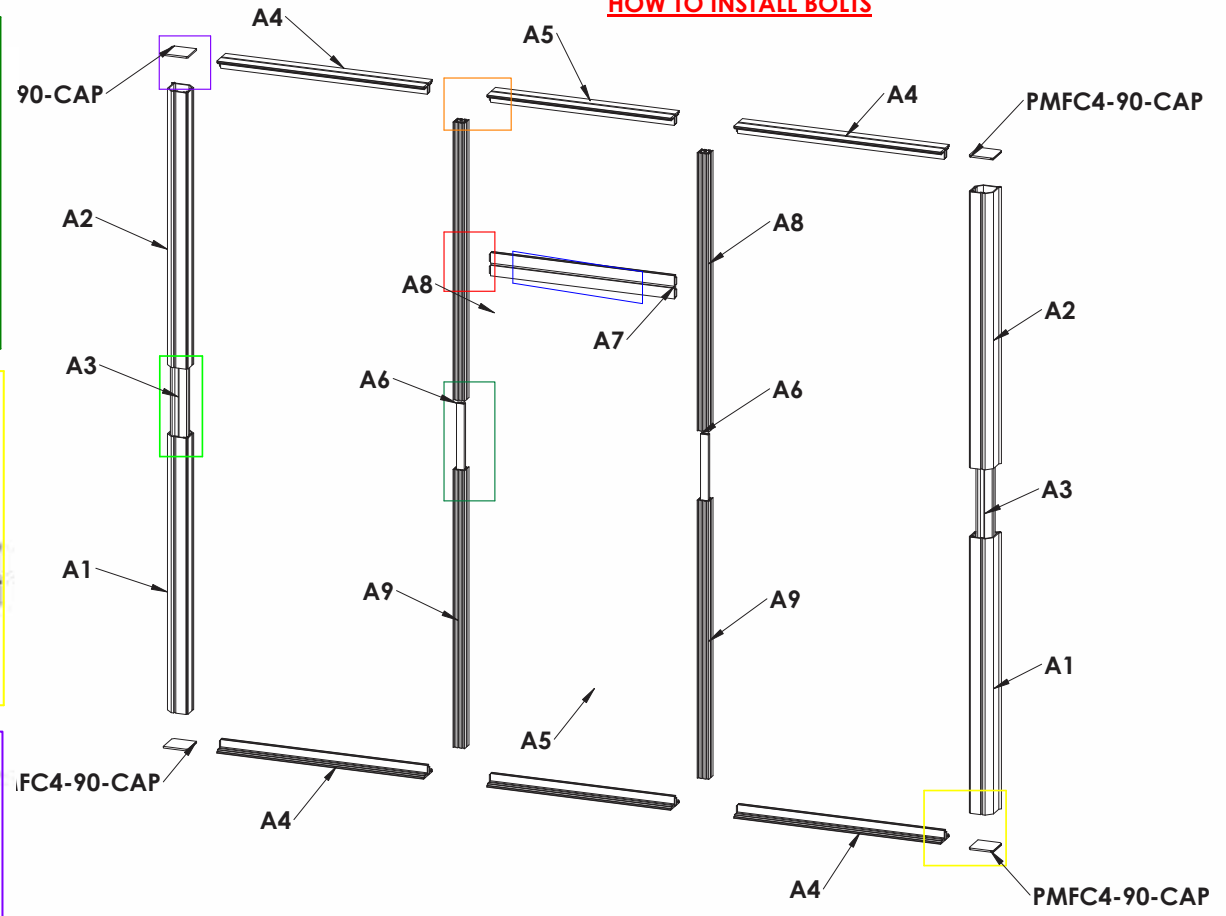
PUT MOUNTING BOLT IN PS2 BEFORE INSTALLING IT



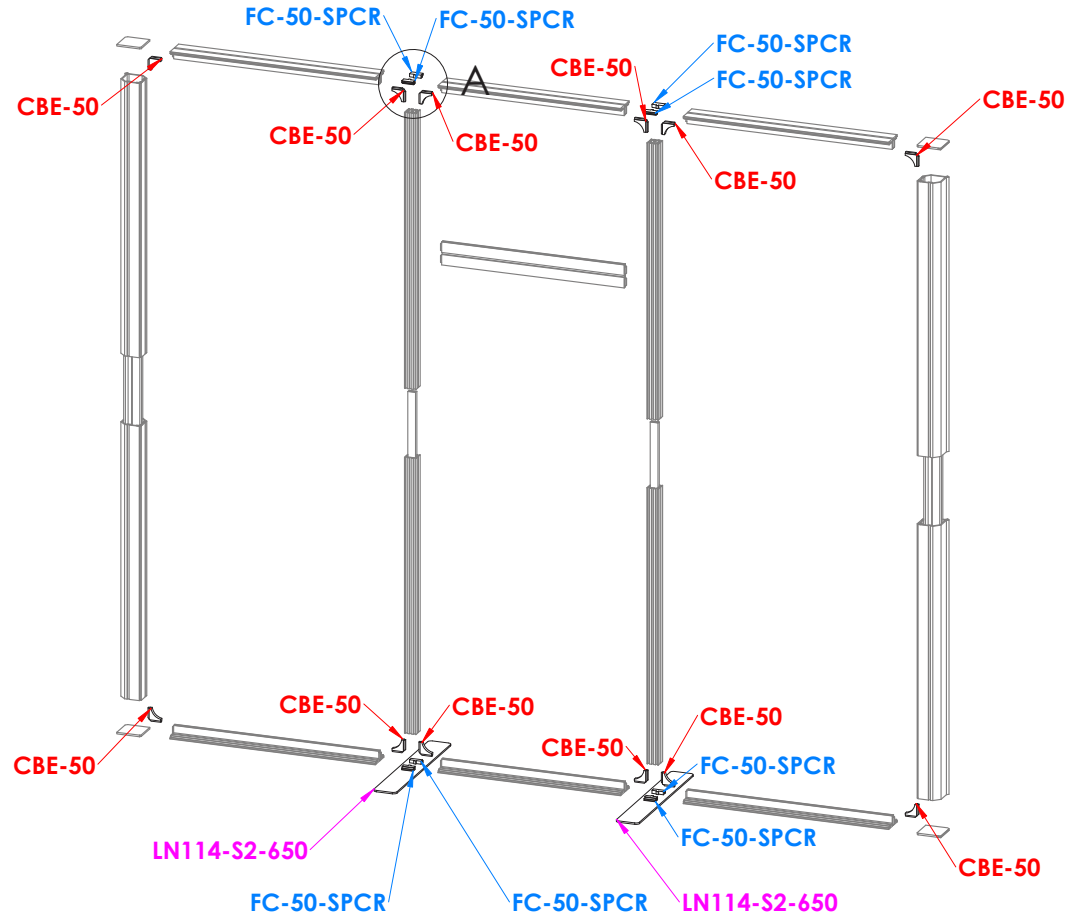
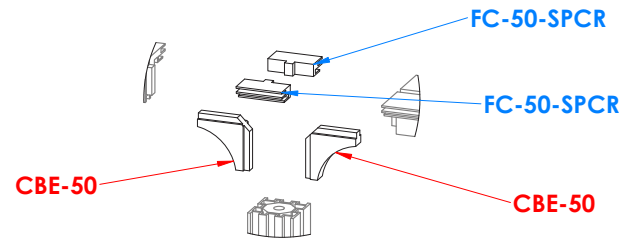
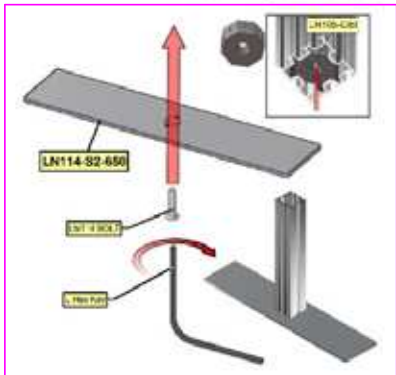
ASSEMBLE FRAME



HOW TO INSTALL BOLTS

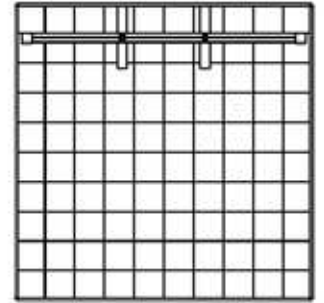


Code	#	Description
CBE-50	12	CORNER PRESSURE FIT CONNECTOR
FC-50-SPCR	8	FC-50-SPCR - FRAME CHANNEL SPACER IN ABS
LN114-S2-650	2	FOOT PLATE , 650MM LENGTH

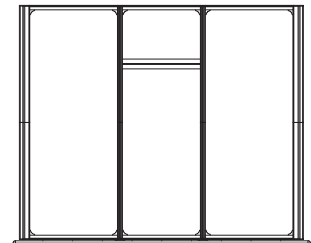


HAVE TWO PEOPLE HELP TO STAND THE FRAME UP TO PROCEED TO NEXT STEP

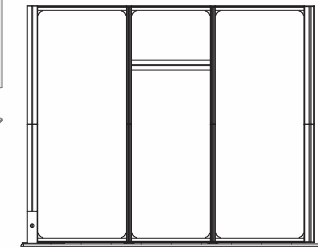
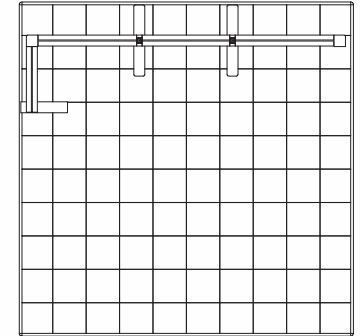
INSTALL CORNER AND SPACING HARDWARE



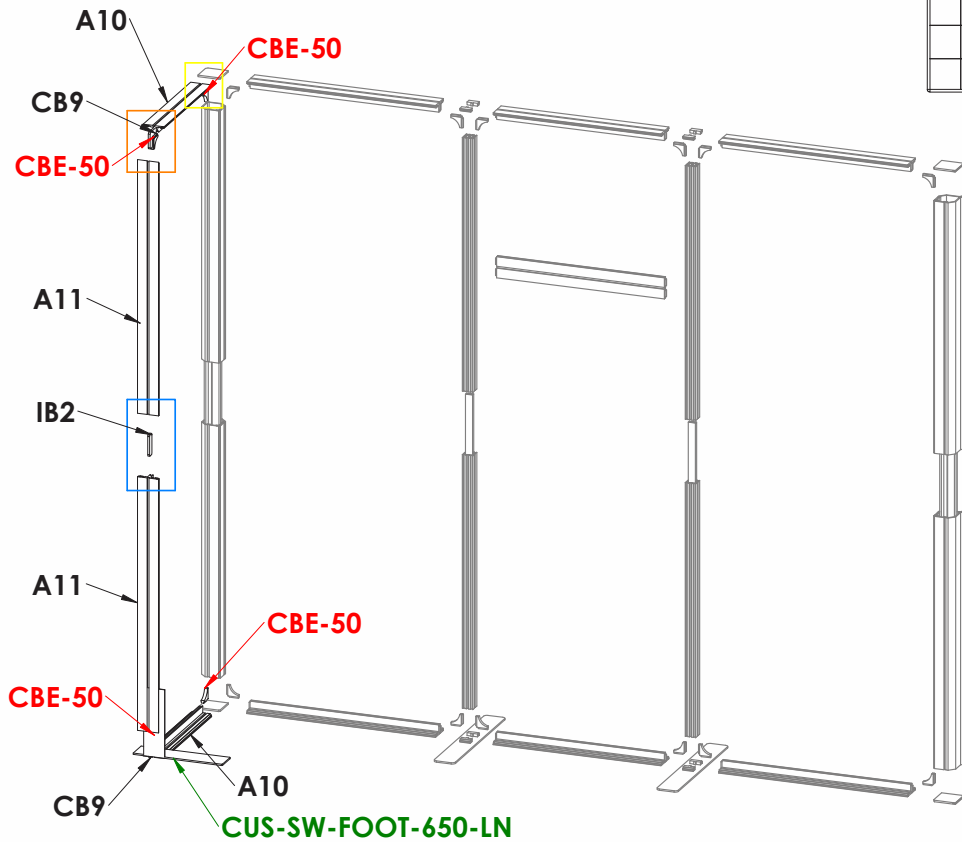
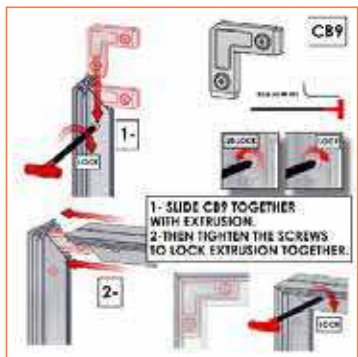
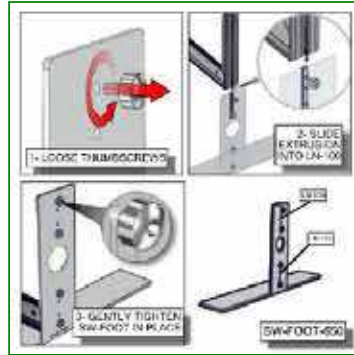
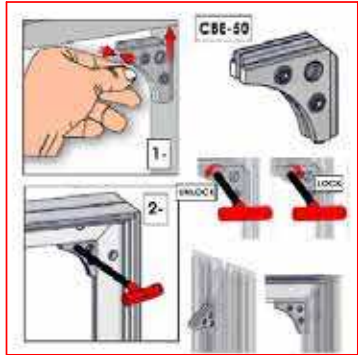
TWO PEOPLE SHOULD BE NEEDED FOR INSTALLING THE FEET ONE HOLDING THE FRAME AND ONE SCREWING IN THE FEET



ASSEMBLE LEFT WALL



Code	#	Description
A11	2	PHFC4-1200 EXTRUSION-WITH IB2 LOCK HOLE-WITH MITRE CUT FOR CB9
A10	2	PHFC4-600 EXTRUSION-WITH CAM LOCKS-WITH MITRE CUT FOR CB9
CB9	2	90 degree joiner
CBE-50	4	CORNER PRESSURE FIT CONNECTOR
CUS-SW-FOOT-650-LN	1	SMART WALL FOOT , CUT DOWN TO 425MM
IB2	1	JOINER BAR(NEW DESIGN)



WARNING!
Locks should ONLY be turned a quarter turn, so as not to STAMP the locks by over-torquing them

LOCK EXTRUSION BY USING 5MM ALLEN KEY

1- SLIDE CB9 TOGETHER WITH EXTRUSION.
2- THEN TIGHTEN THE SCREWS TO LOCK EXTRUSION TOGETHER.

1- Slide the IB2 into extrusion.
2- Then tighten the screws to lock both extrusions together.

1- LOOSEN THUMB SCREWS

2- SLIDE EXTRUSION INTO SW-FOOT

3- GENTLY TIGHTEN SCREW TO LOCK SW-FOOT IN PLACE

SW-FOOT-650

A10

CBE-50

CB9

CBE-50

A11

IB2

A11

CBE-50

CBE-50

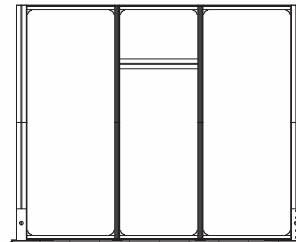
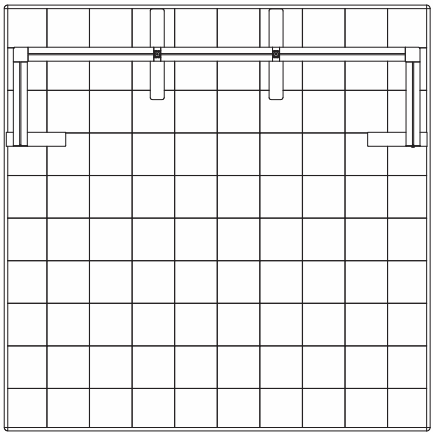
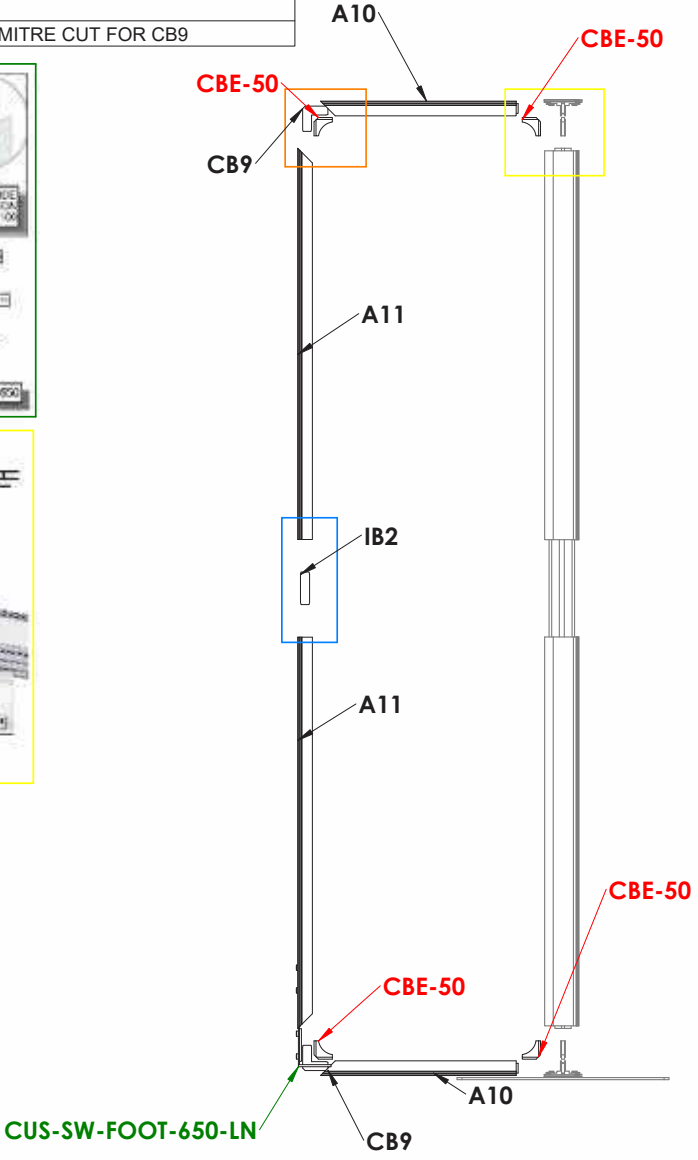
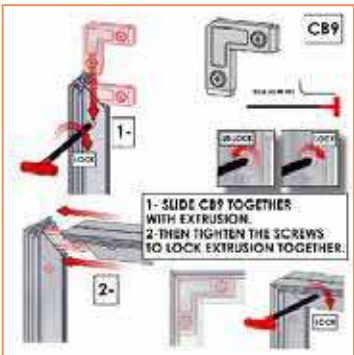
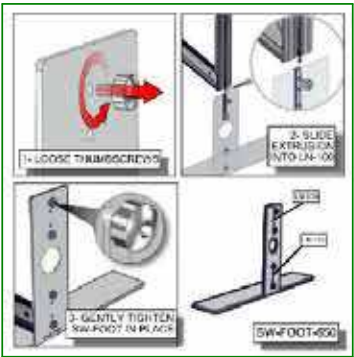
CB9

A10

CUS-SW-FOOT-650-LN

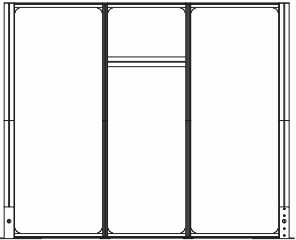
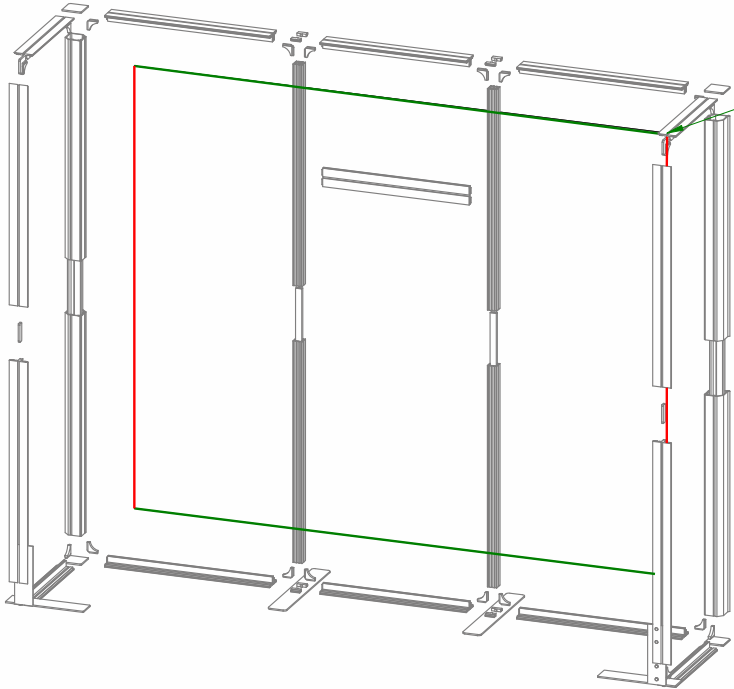
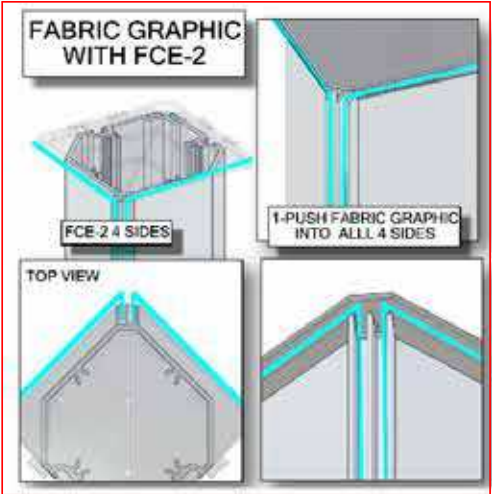
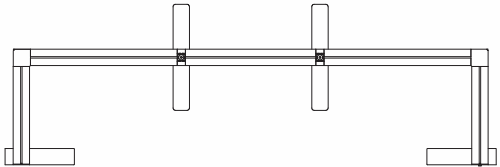
Code	#	Description
A11	2	PHFC4-1200 EXTRUSION-WITH IB2 LOCK HOLE-WITH MITRE CUT FOR CB9
CUS-SW-FOOT-650-LN	1	SMART WALL FOOT , CUT DOWN TO 650MM, WITH LN100 & M5 THUMBSCREWS
CBE-50	4	CORNER PRESSURE FIT CONNECTOR
CB9	2	90 DEGREE JOINER
IB2	1	JOINER BAR(NEW DESIGN)
A10	2	PHFC4-600 EXTRUSION-WITH CAM LOCKS-WITH MITRE CUT FOR CB9

ASSEMBLE RIGHT WALL



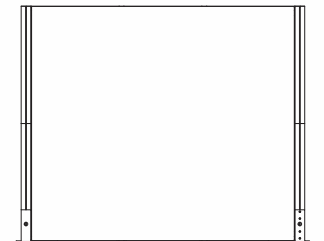
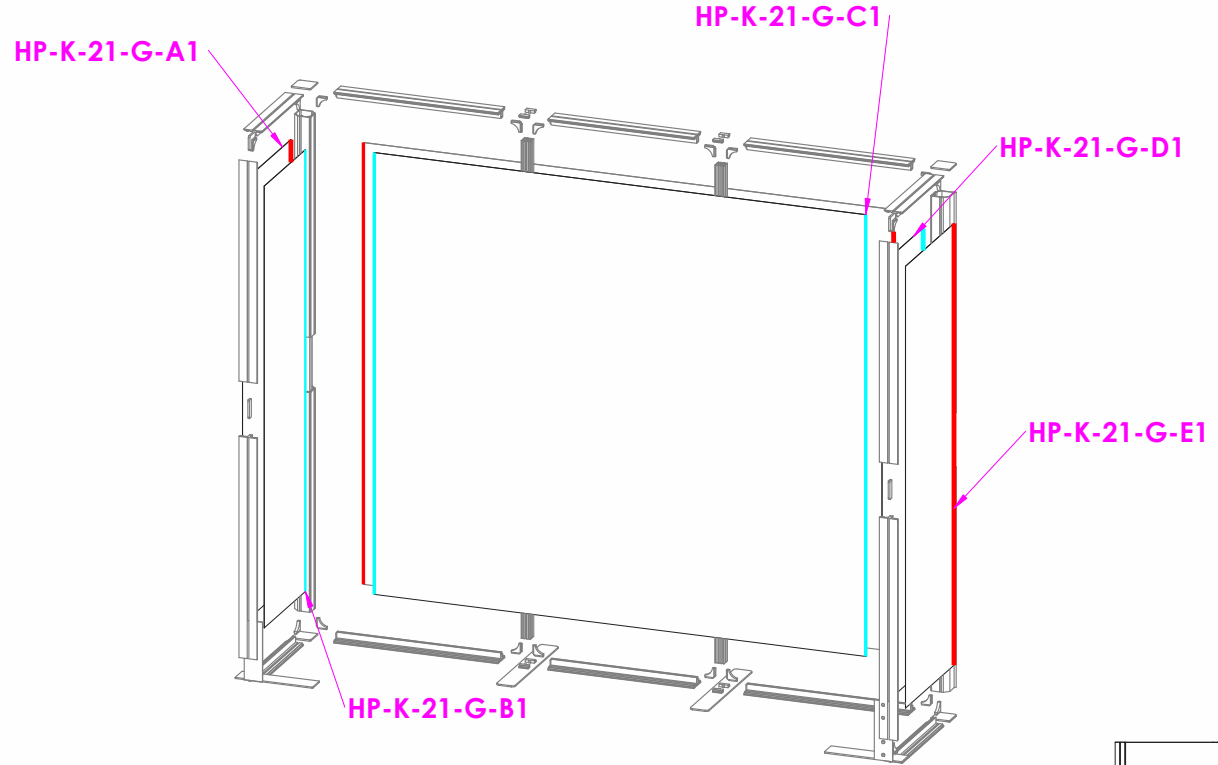
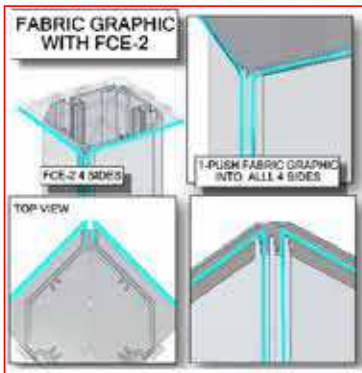
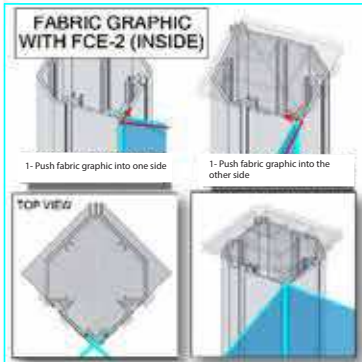
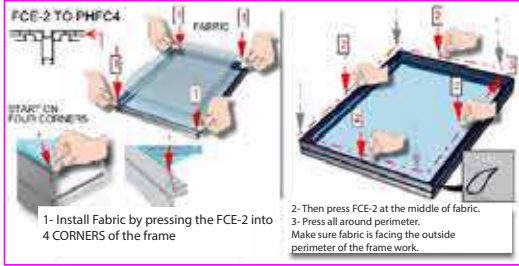
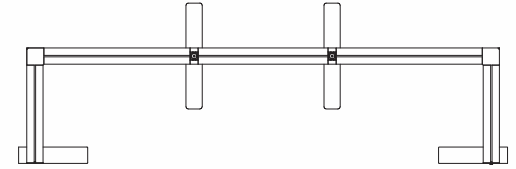
Code	#	Description
HP-K-21-LN-C2	1	LINER(C2) 114.53 w X 94.37 h finished size Opaque liner, with FCE-2 silicone beading sewn to back perimeter, corner pull sewn in bottom right corner

BACK LINER GRAPHICS



Code	#	Description
HP-K-21-G-E1	1	GRAPHIC(E1) 27.68 w X 94.37 h finished size Dye-sub print on 8oz. Power Stretch, with FCE-2 silicone beading sewn to back perimeter, corner pull sewn in bottom right corner
HP-K-21-G-A1	1	GRAPHIC(A1) 27.68 w X 94.37 h finished size Dye-sub print on 8oz. Power Stretch, with FCE-2 silicone beading sewn to back perimeter, corner pull sewn in bottom right corner
HP-K-21-G-C1	1	GRAPHIC(C1) 106.18 w X 94.37 h finished size Dye-sub print on 8oz. Power Stretch, with FCE-2 silicone beading sewn to back perimeter, corner pull sewn in bottom right corner
HP-K-21-G-B1	1	GRAPHIC(B1) 23.5 w X 94.37 h finished size Dye-sub print on 8oz. Power Stretch, with FCE-2 silicone beading sewn to back perimeter, corner pull sewn in bottom right corner
HP-K-21-G-D1	1	GRAPHIC(D1) 23.5 w X 94.37 h finished size Dye-sub print on 8oz. Power Stretch, with FCE-2 silicone beading sewn to back perimeter, corner pull sewn in bottom right corner

GRAPHICS



Code	#	Description
EXT-M-MB	1	EXTRUSION MOUNTED MEDIUM MONITOR BRACKET AND MOUNTING HARDWARE

MONITOR MOUNT INSTALLATION

