

Economy Retractor

Product Parts

- 1 - Base
- 2 - Banner Rail
- 3 - Shock Corded Pole*
- 4 - Pin

***Do Not Pull Pin Until Directed**



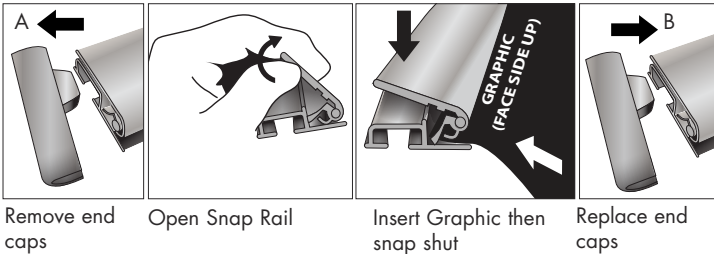
*24" model has a four piece Pole.

*31.5", 33.5", 36", 48" models have a three piece Pole. (48" includes two poles)

Display Set-Up

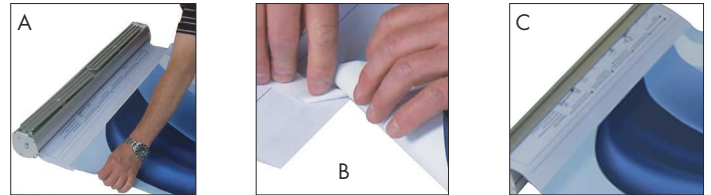
Step 1

Remove both End Caps (A) from the Banner Rail (2) and snap it open. Fully insert the top edge of the Banner into the groove of the Banner Rail (2) and snap it shut (B).



Step 2

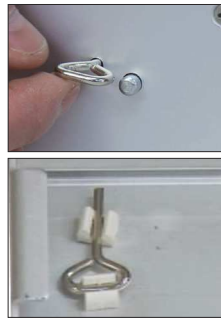
(A) Lay the banner flat, printed side up and align the banner to the top of the tape leader. (B) On the Base (1) remove the strip of protective paper to expose the adhesive while firmly and evenly pressing the bottom of the banner onto the adhesive. (C) Gently smooth out any bubbles or wrinkles where the banner and tape leader connect.



Step 3

Maintain tension on the banner while slowly removing the Pin (4). Allow the banner to gently roll into the canister.

****Store the Pin on the base for future graphic changes.**



Step 4

Flip the Base (1) upside down and rotate the feet to sit perpendicular to the Base.



Step 5

Insert the Shock Corded Pole (3) into the hole in the center of the base. Ensure the pole is seated completely into the bottom half circle cutout.



Step 6

Stand facing the back of the Base (1) and gently pull the Banner Rail (2) upwards. Slide the clip into the opening of the Banner Rail (2).



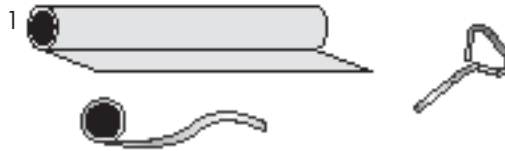
Storage & Care

Place all product parts into Carry Case and store in a cool dry location. To clean, wipe with damp cloth.

Replacement Graphic

What you will need before you start

- 1 - Graphic
- 2 - Two-Sided Banner Tape
- 3 - Tension Pin



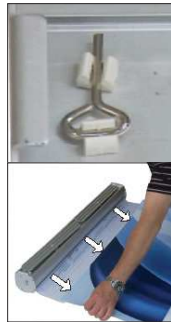
* For ease of graphic replacement, the use of a partner is recommended but not required.



Prep Instructions

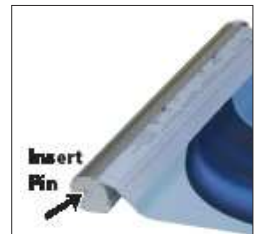
Step 1

Locate the Tension pin on your retractor. It is usually found on the bottom of the base. A two inch finishing nail can substitute for the pin. Hold the base firmly and have your partner carefully pull the banner completely out of the base exposing the leader beyond the original graphic. This is best done laying the unit on its backside.



Step 2

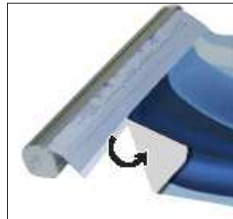
With the leader exposed and tension on the banner, fully insert the tension pin into the hole on the side of the unit preventing the axle from retracting the banner back inside. This may take your partner moving the banner slightly in or out to line the pin in its slot. If done correctly there will not be any tension on the banner and you can begin the graphic change out procedure.



Graphic Replacement

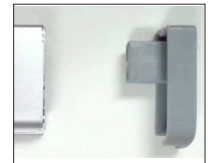
Step 1

Carefully peel the graphic from the leader. You don't want to damage or tear the leader.



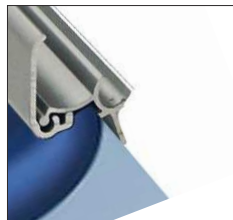
Step 2

Remove the plastic end caps from the ends of the snap rail. Snap the rail open. Note how the banner was installed in the rail so you can replicate that with the new graphic.



Step 3

Install the snap rail on the top of the banner. Make sure the banner is all the way inserted in the snap rail. Snap the rail shut and replace the end caps.



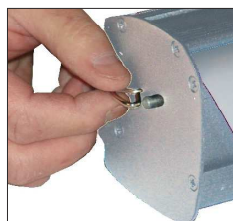
Step 4

Adhere the provided banner tape to the end of the leader. Remove backer from the tape and adhere the banner to the leader making sure it's completely straight. You can add a strip of packing tape for added precaution.



Step 5

Have your partner hold the top of the banner taut and then gently pull the tension pin out. Retract the new banner slowly into the base.



NOTE:

End Caps, Snap Rails, Tension Pins and other hardware may vary from your product, however the concept is the same.