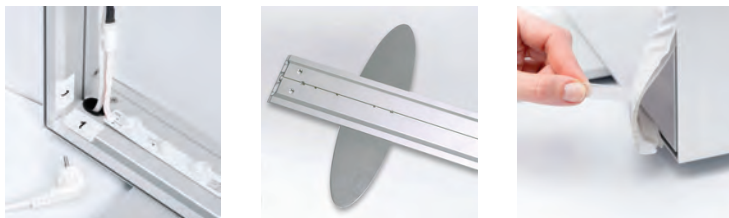
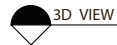




LUMIWALL LED Backlit fabric display

LUMIWALL is constructed of aluminum extrusion and features SEG press fit fabric graphics for hassle free set up. Heavy duty aluminum feet ensure maximum stability. Graphics are printed on premium fabric designed to provide maximum illumination while maintaining vibrant colors. The entire unit disassembles and packs flat in a single wheeled rotomolded case for unparalleled protection.

MODEL #: LW-44



Details

- Aluminum Extrusion Frame
- Single or double-sided SEG press fit dye-sublimated fabric graphics
- Easy assembly
- Packs in a single 4825 rotomolded, wheeled, flat transport case
- Limited Lifetime Warranty
- Made in the USA

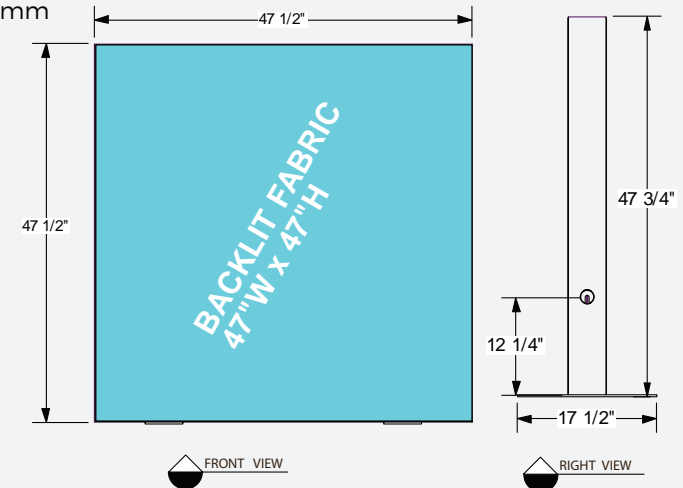
Includes

- 4' x 4' Lumiwall Frame
- Lumiwall Stabilizer Feet
- Backlit Front Fabric
- White Backing Fabric
- LED Backlighting Kit (800 Lumens, 6500k Daylight White)
- Lumiwall Tool Kit
- Rotomolded Case

Dimensions

Assembled unit:
47.5"w x 48.25"h x 17.5"d
1206mm x 1226mm x 444mm
50 lbs / 22.7 kgS

Graphic area:
47"w x 47"h
1194mm x 1194mm



Additional information

Power/Wattage Requirements: 60w
Set-Up Time: 15-20min
Lead Time: 10 Days
Warranty: Limited Lifetime Warranty

Shipping



Packs in (1) 4825-01 case
Shipping dimensions:
50"h x 27"w x 5"d
1270mm x 685mm x 127mm
50 lbs / 22.7 kgS