

TLIKIT1



SET-UP MANUAL

OVERVIEW

PG. 2-3

PARTS LIST

PG. 4

LARGE FRAME ASSEMBLY

PG. 5-8

CENTER FRAME ASSEMBLY

PG. 9-12

MOUNTOR MOUNT

PG. 13

SMALL FRAME ASSEMBLY

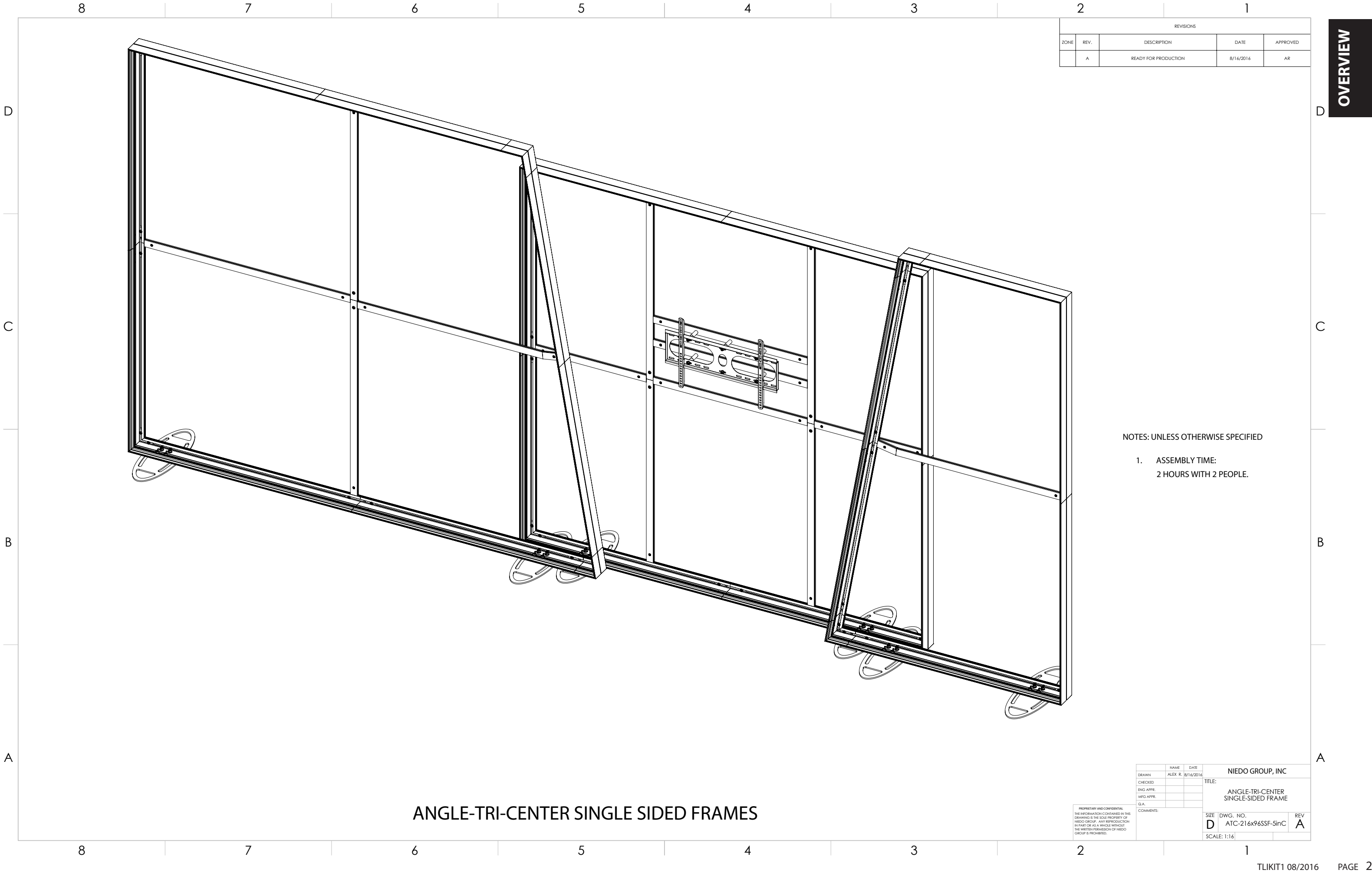
PG. 14-16

SEG ASSEMBLY / CARE

PG. 17

PACKING

PG. 18



REVISIONS				
ZONE	REV.	DESCRIPTION	DATE	APPROVED
	A	READY FOR PRODUCTION	8/16/2016	AR

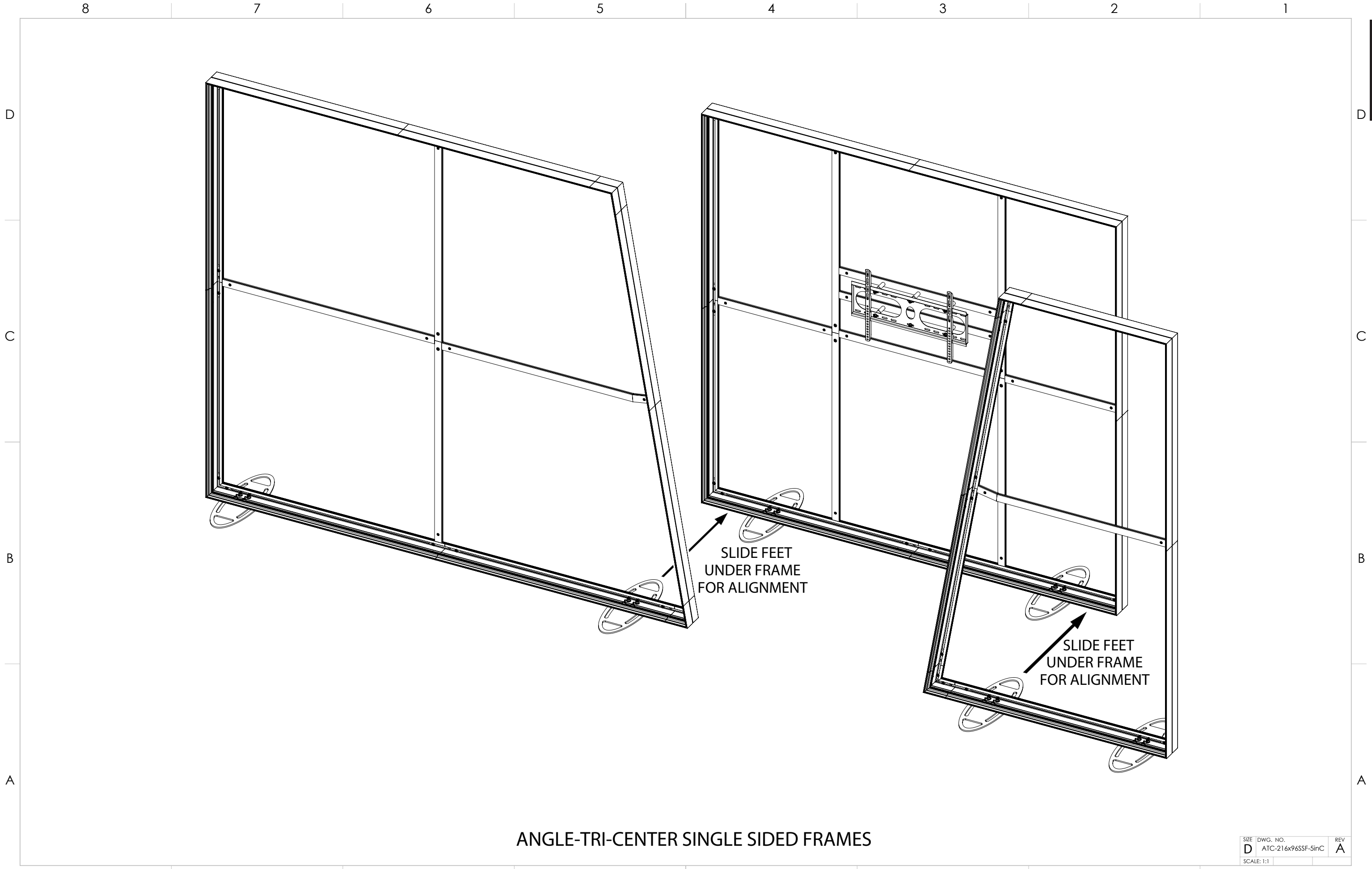
NOTES: UNLESS OTHERWISE SPECIFIED

- 1. ASSEMBLY TIME:
2 HOURS WITH 2 PEOPLE.

ANGLE-TRI-CENTER SINGLE SIDED FRAMES

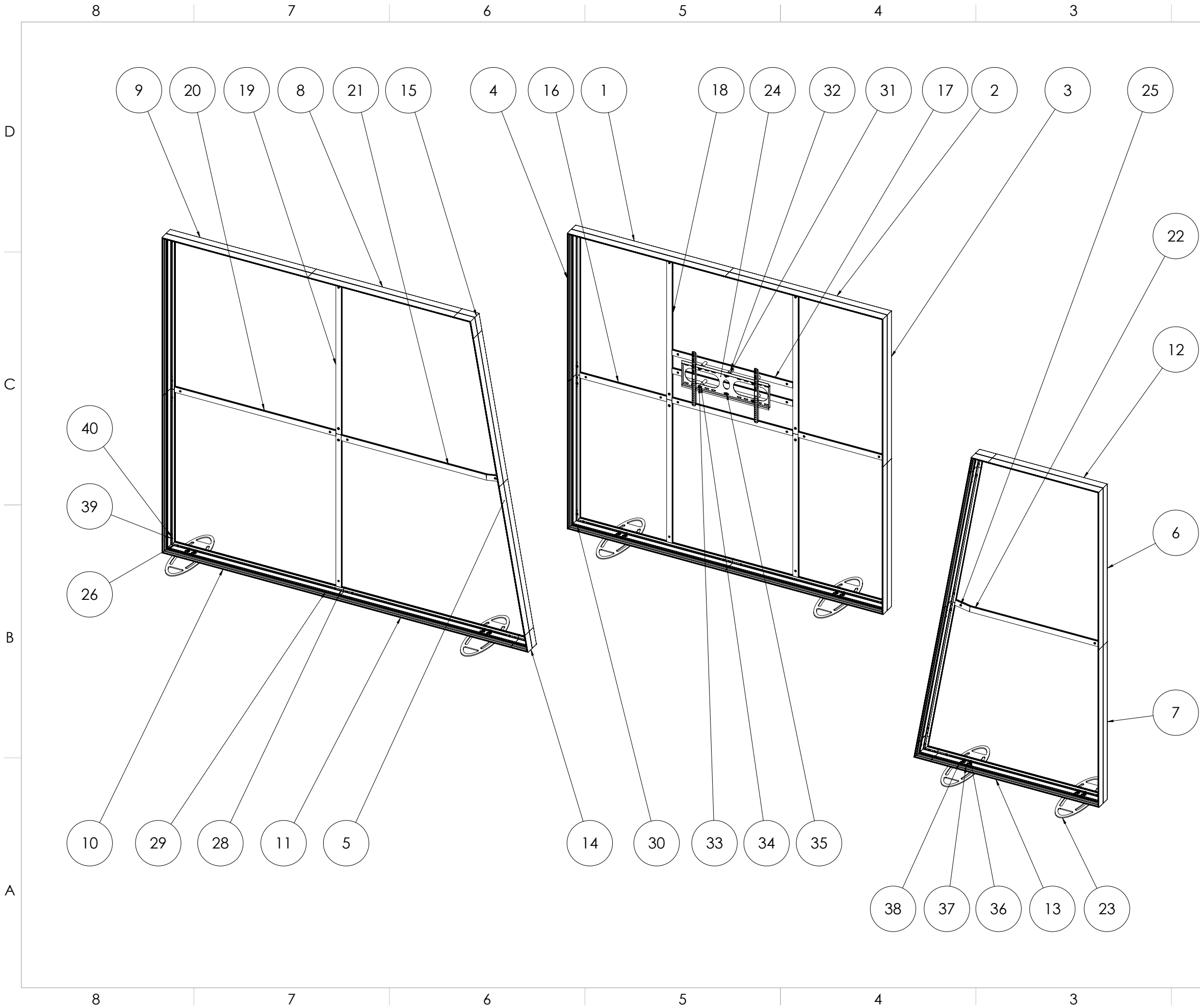
PROPRIETARY AND CONFIDENTIAL
THE INFORMATION CONTAINED IN THIS
DRAWING IS THE SOLE PROPERTY OF
NIEDO GROUP. ANY REPRODUCTION
IN PART OR AS A WHOLE WITHOUT
THE WRITTEN PERMISSION OF NIEDO
GROUP IS PROHIBITED.

DRAWN	NAME	DATE	NIEDO GROUP, INC	
CHECKED	ALEX R.	8/16/2016	TITLE:	
ENG APPR.			ANGLE-TRI-CENTER	
MFG APPR.			SINGLE-SIDED FRAME	
Q.A.			REV	
COMMENTS:			SIZE DWG. NO.	A
			D ATC-216x96SSF-5inC	
			SCALE: 1:16	



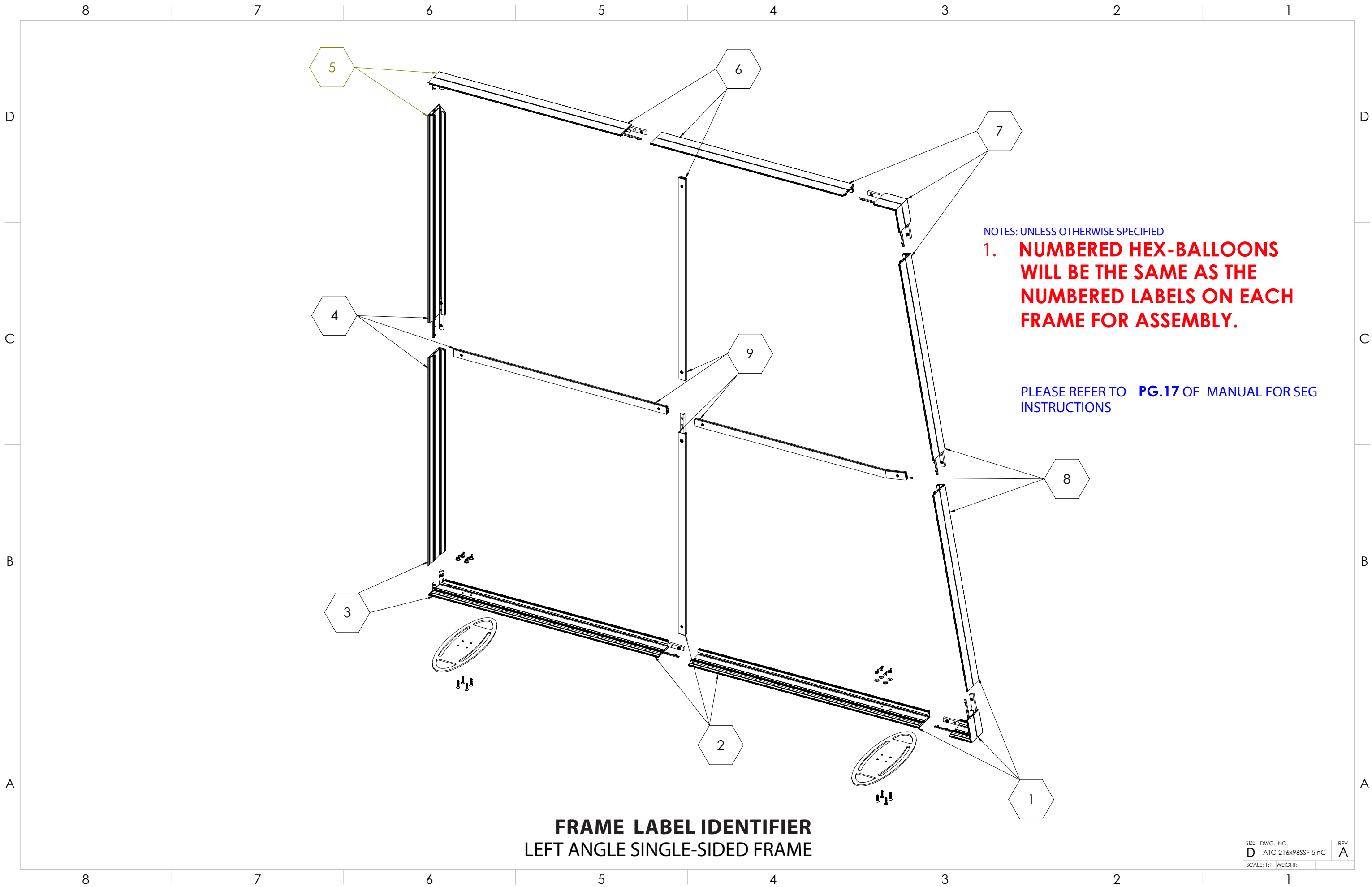
ANGLE-TRI-CENTER SINGLE SIDED FRAMES

SIZE	DWG. NO.	REV
D	ATC-216x96SSF-5inC	A
SCALE: 1:1		



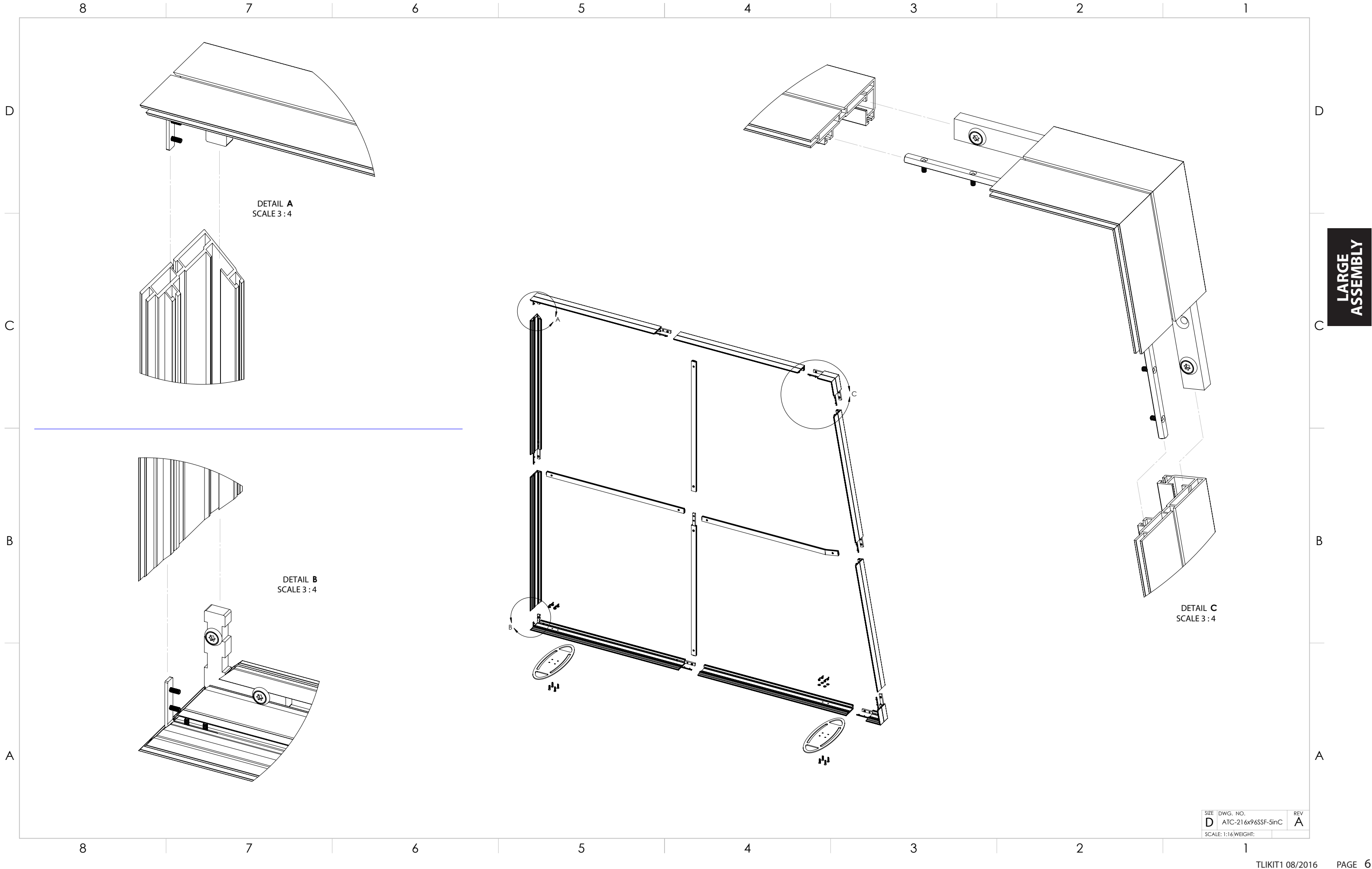
ITEM NO.	PART NUMBER	DESCRIPTION	QTY.
1	TL1023	TL1023 - 46.57in Long - FRT1	2
2	TL1023	TL1023 - 46.57in Long - FRT2	2
3	TL1023	TL1023 - 45.00in Long - FRT1	2
4	TL1023	TL1023 - 45.00in Long - FRT2	2
5	TL1023	TL1023 - 43.74in Long - 90 Deg	4
6	TL1023	TL1023 - 48.00in Long - FRT1	2
7	TL1023	TL1023 - 48.00in Long - FRT2	2
8	TL1023	TL1023 - 43.04in Long - 90 Deg	1
9	TL1023	TL1023 - 43.04in Long - FRT	1
10	TL1023	TL1023 - 51.50in Long - 90x45 Deg	1
11	TL1023	TL1023 - 51.50in Long - 90 Deg	1
12	TL1023	TL1023 - 32.67in Long - FRT4	1
13	TL1023	TL1023 - 49.60in Long - FRT4	1
14	TL1023	TL1023 - 5in x 80 Deg CORNER	2
15	TL1023	TL1023 - 5in x 100 Deg CORNER	2
16	TLZ4400	TLZ4400 - 25.60in Long	2
17	TLZ4400	TLZ4400 - 35.63in Long	3
18	TLZ4400	TLZ4400 - 43.42in Long	4
19	TLZ4400	TLZ4400 - 46.42in Long	2
20	TLZ4400	TLZ4400 - 47.62in Long	1
21	TLZ4400-AW	TLZ4400-Angle Widmt 47.32 Long	1
22	TLZ4400-AW	TLZ4400-Angle Widmt 43.14 Long	1
23	EBF-SS	ELLIPSE BASE FOOT	6
24	TL1007	TL - LARGE MONITOR MOUNT	1
25	TL-LOCK	13mm TENSION LOCK	22
26	H1005	FLAT ALUM CAST L-BRACKET	8
27	H1011	CONNECTOR for Z4400 Horiz-Splice	3
28	H1011	CONNECTOR for TL1023 Frames	18
29	H1014	T-Channel Lock Connector 200mm	18
30	H1001	L-BRACKET 45mm x 45 mm	8
31	.	SPACER .75 Dia x 1.25in Long	6
32	.	SPACER .75 Dia x 2.00in Long	6
33	.	BOLTS 5/16-18	6
34	.	WASHER 5/16	6
35	.	NUT 5/16-18	6
36	.	SCREW FLAT HD	24
37	.	WASHER FLAT	24
38	.	WING NUT	24
39	.	SCREW FLAT HD TORX	42
40	H0003	WASHER LOCATING	42

PARTS LIST



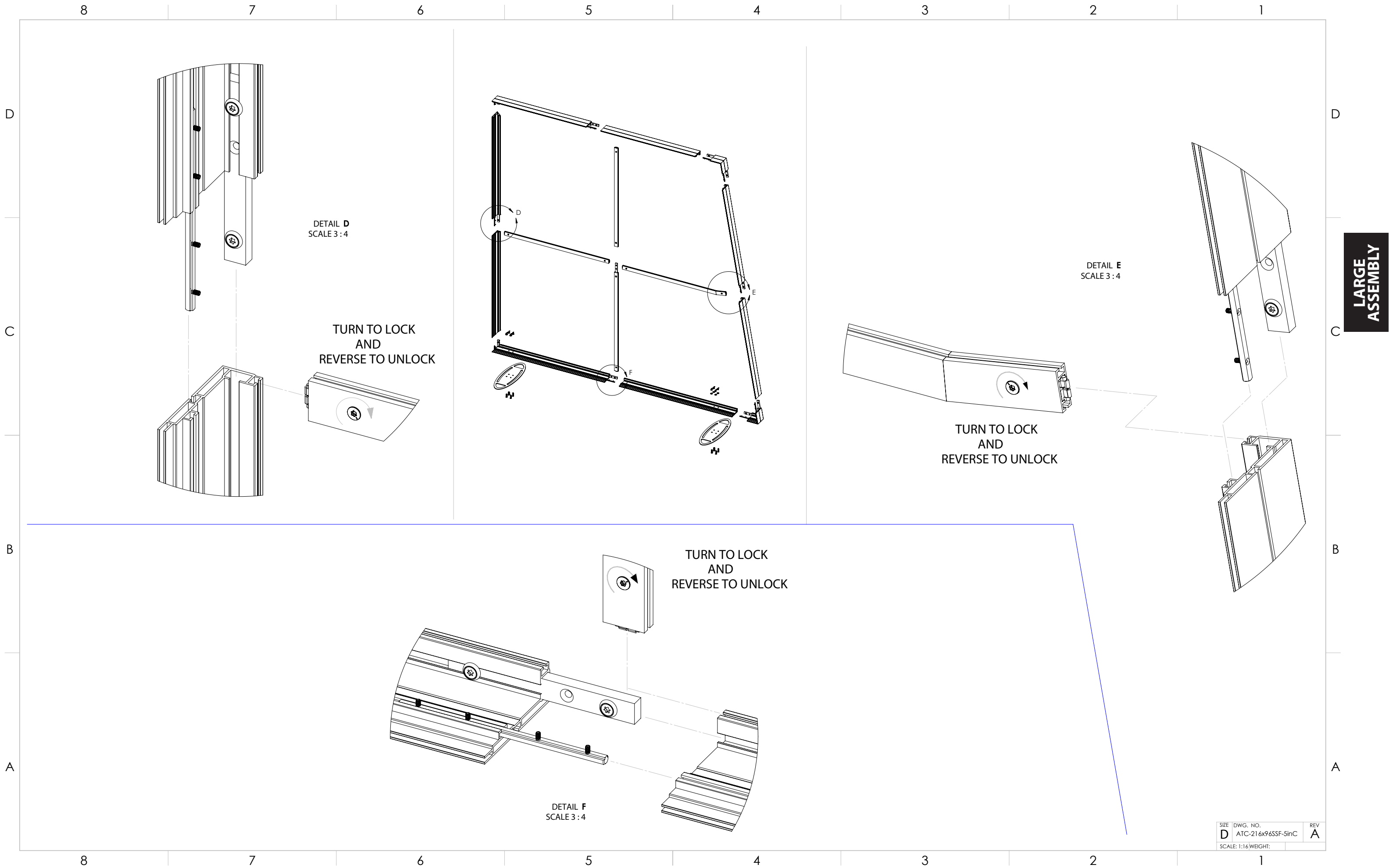
LARGE
ASSEMBLY

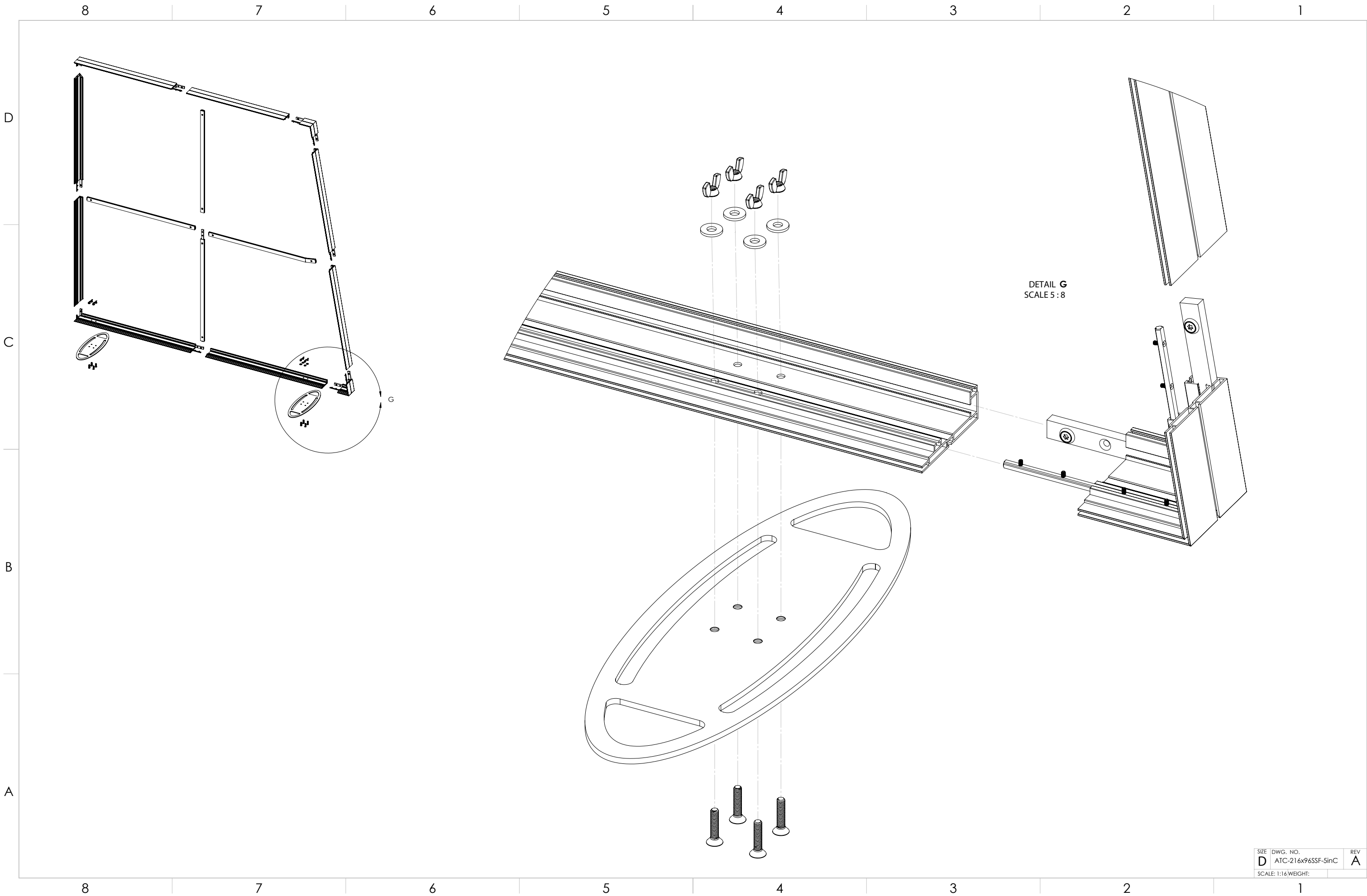
SIZE	DWG. NO.	REV
D	ATC-216x96SSF-5inC	A
SCALE: 1:1	WEIGHT:	



LARGE
ASSEMBLY

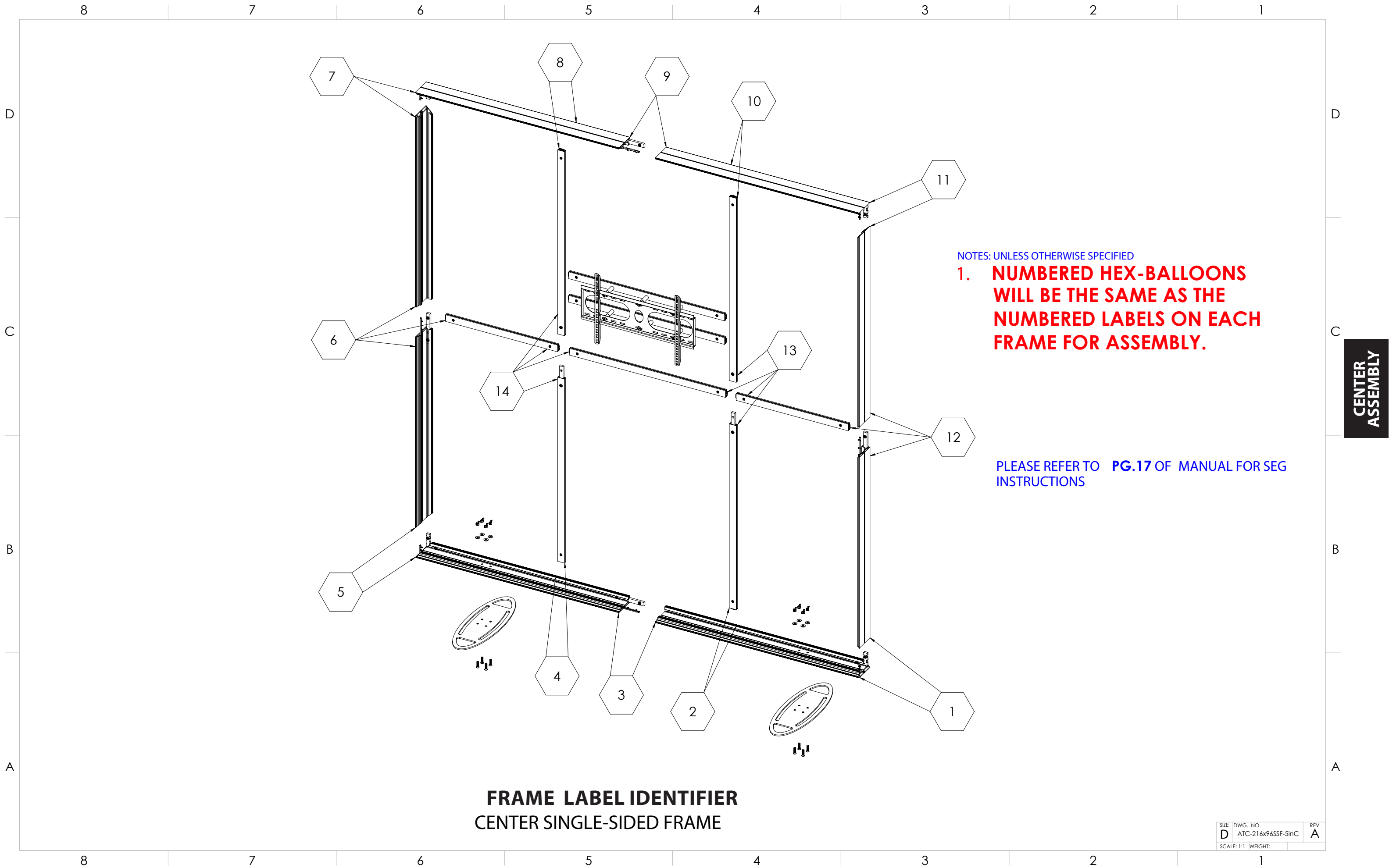
SIZE	DWG. NO.	REV
D	ATC-216x96SSF-5inC	A
SCALE: 1:16/WEIGHT:		





LARGE
ASSEMBLY

SIZE	DWG. NO.	REV
D	ATC-216x96SSF-5inC	A
SCALE: 1:16/WEIGHT:		



NOTES: UNLESS OTHERWISE SPECIFIED

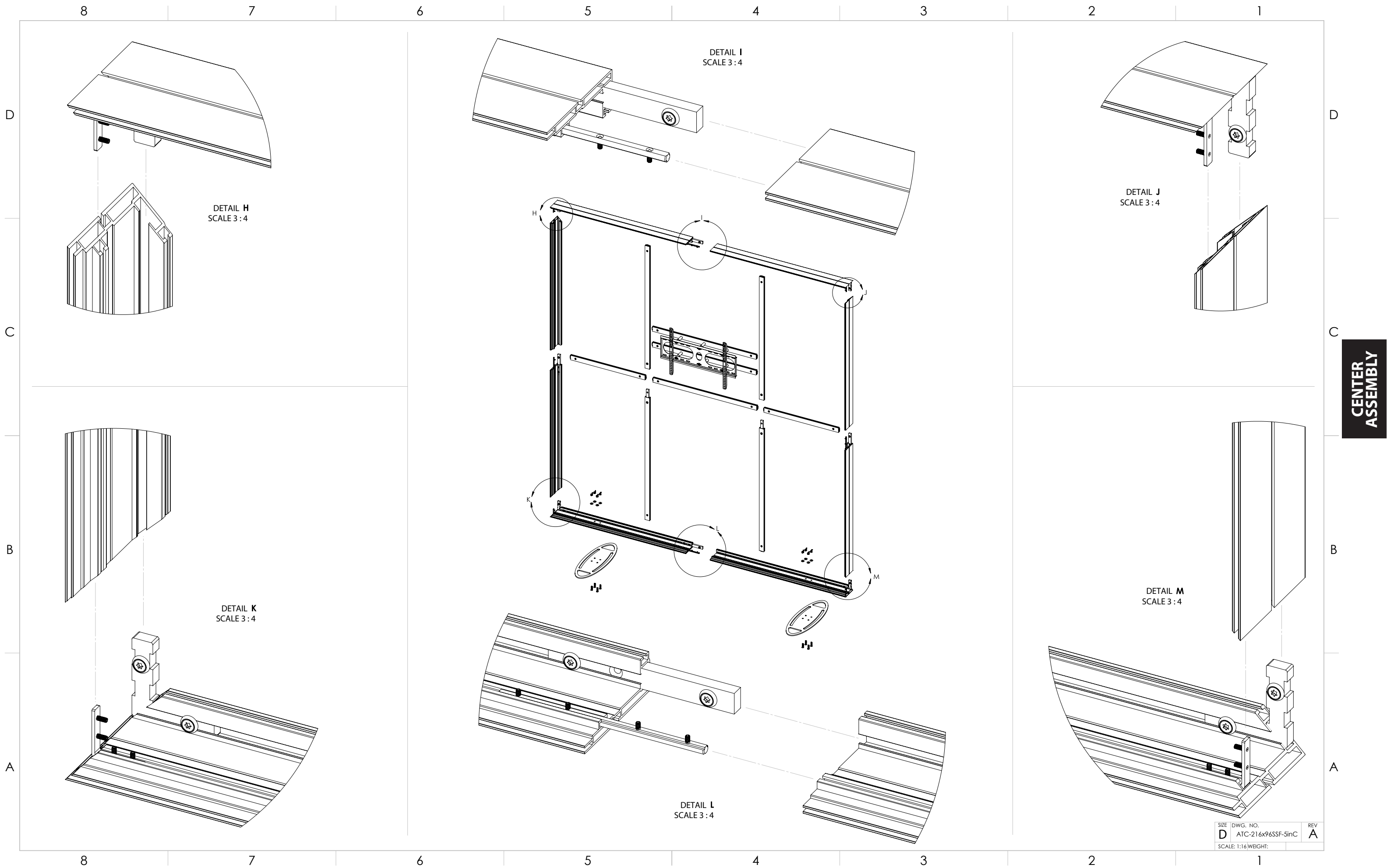
1. **NUMBERED HEX-BALLOONS
WILL BE THE SAME AS THE
NUMBERED LABELS ON EACH
FRAME FOR ASSEMBLY.**

PLEASE REFER TO **PG.17** OF MANUAL FOR SEG
INSTRUCTIONS

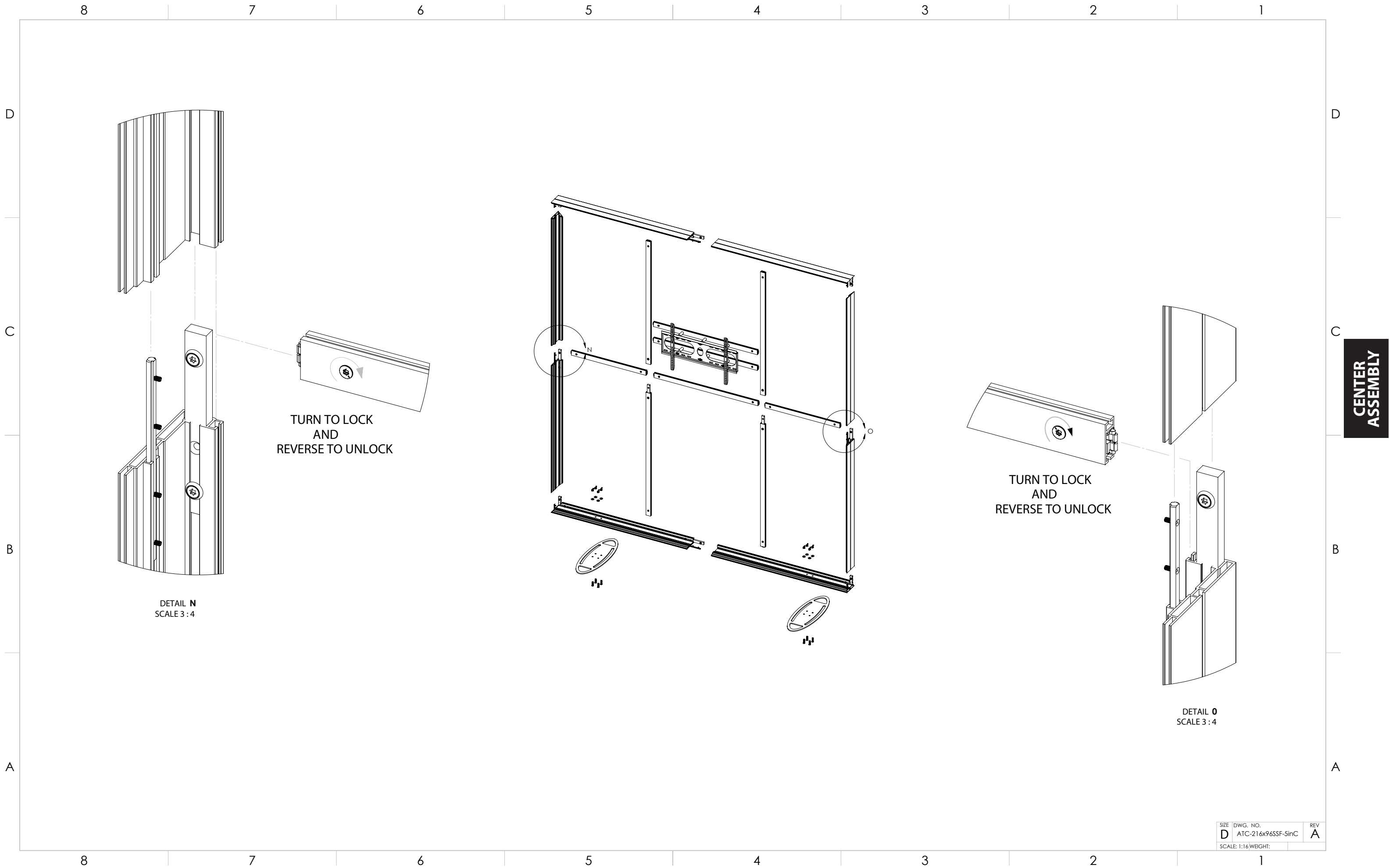
CENTER
ASSEMBLY

FRAME LABEL IDENTIFIER
CENTER SINGLE-SIDED FRAME

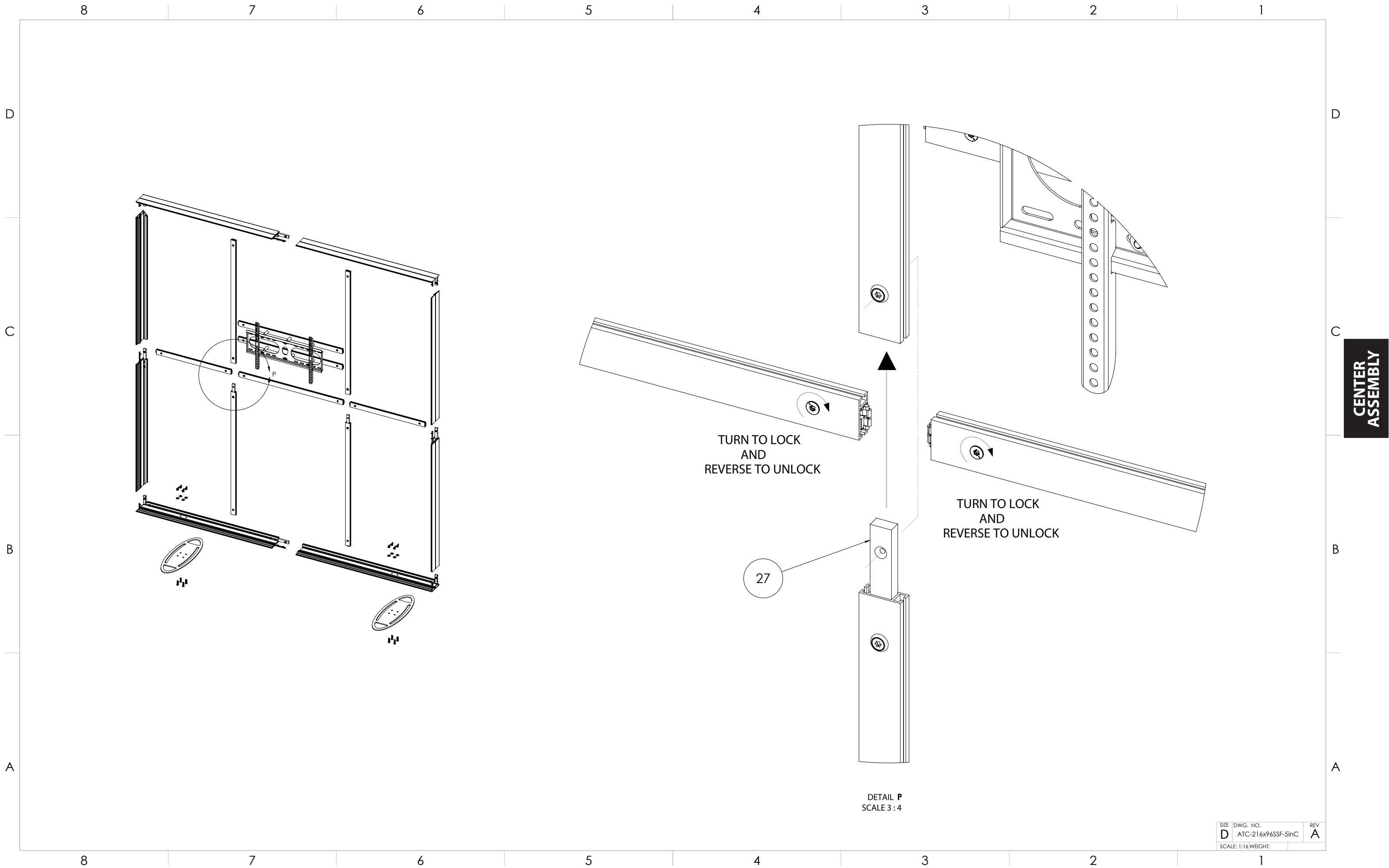
SIZE	DWG. NO.	REV
D	ATC-216x96SSF-5inC	A
SCALE: 1:1	WEIGHT:	



CENTER
ASSEMBLY

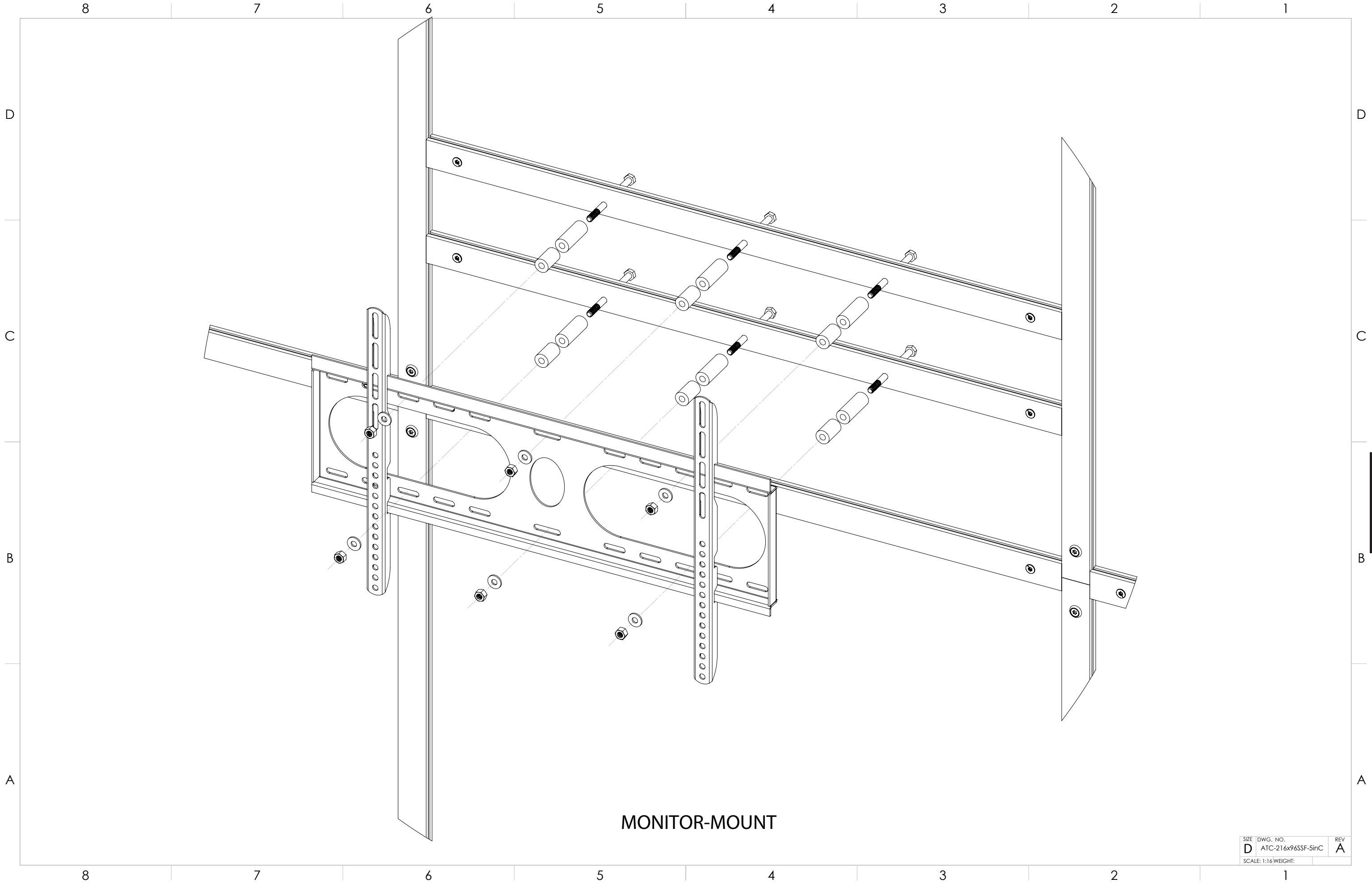


CENTER
ASSEMBLY



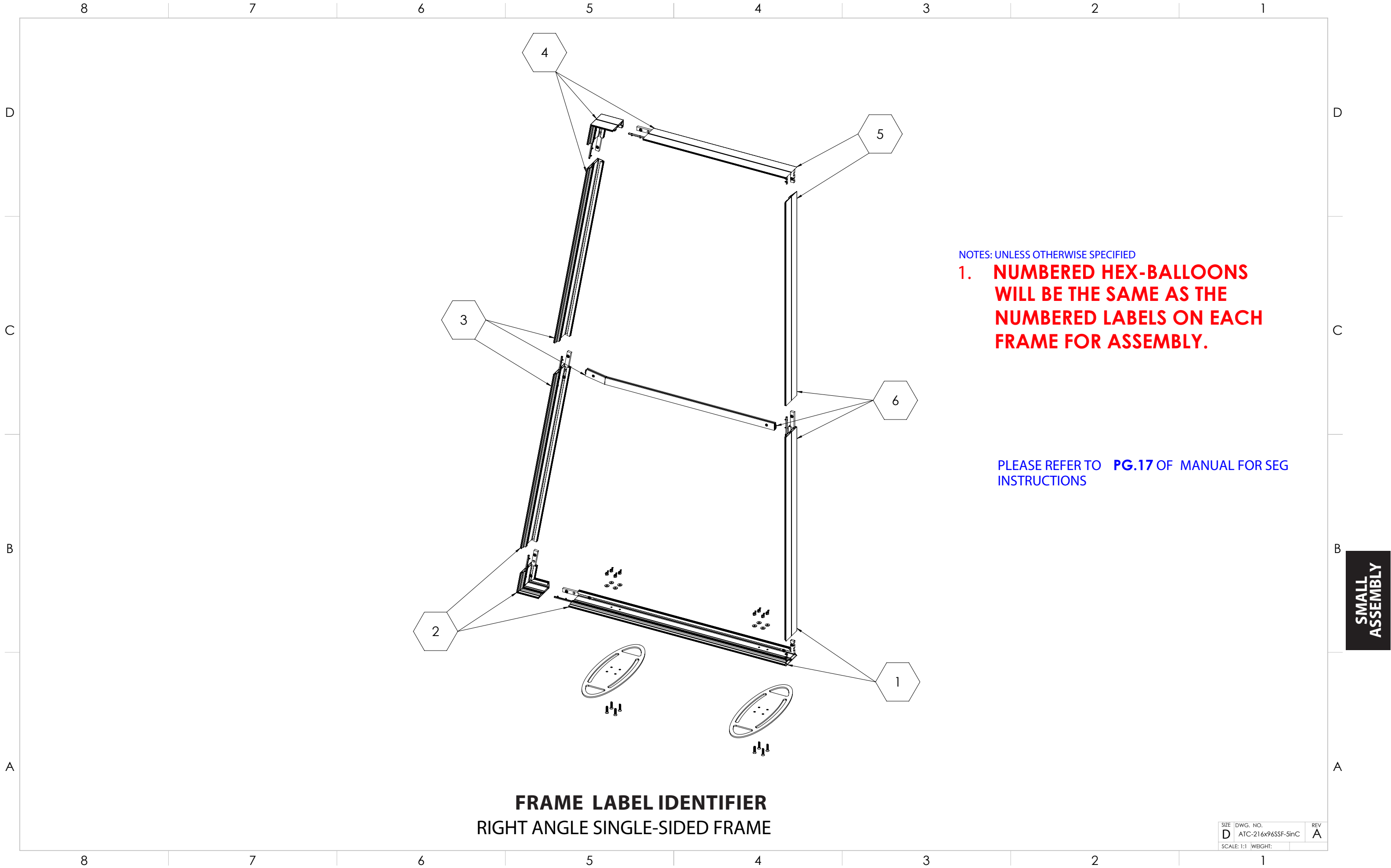
CENTER
ASSEMBLY

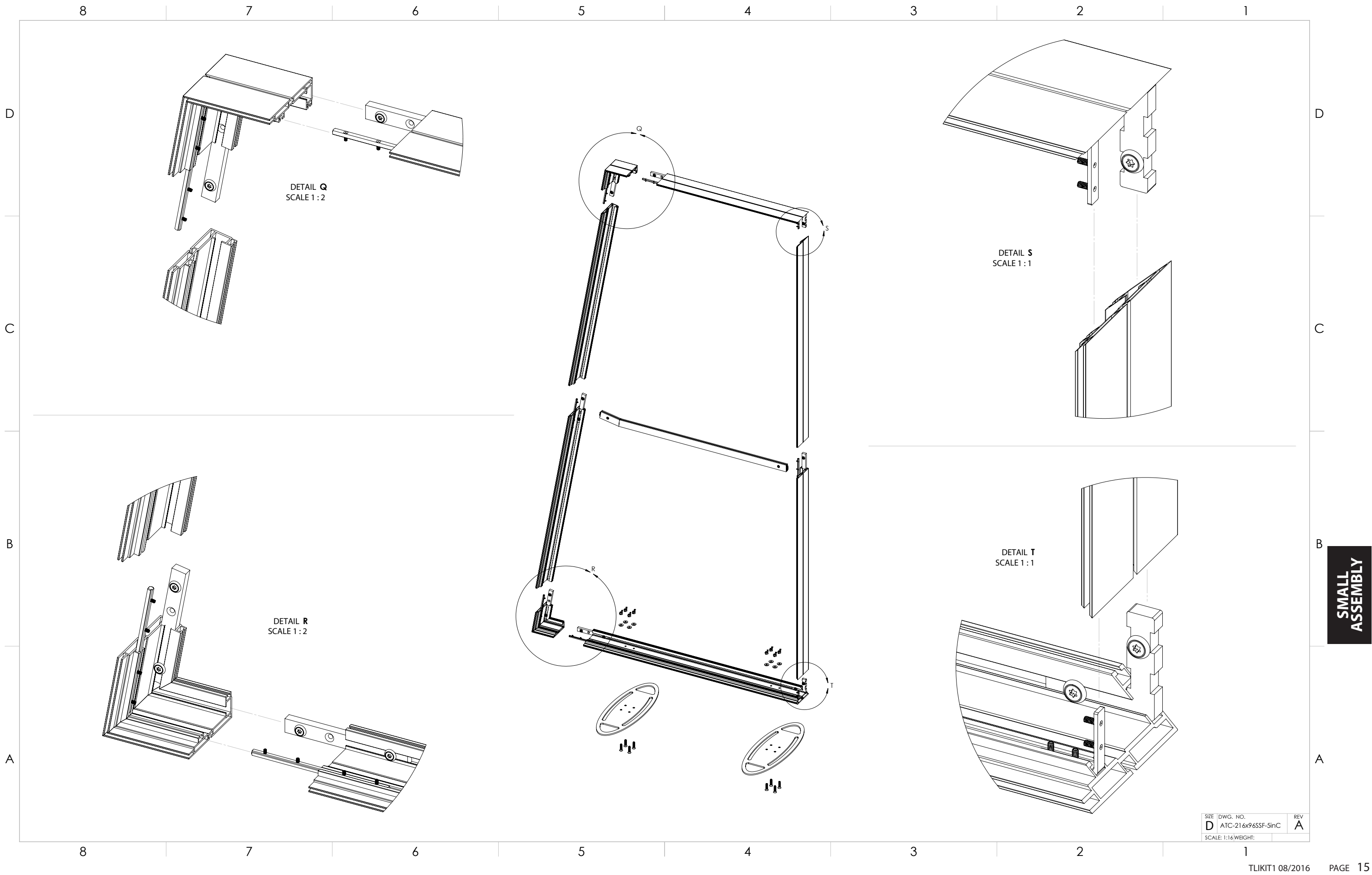
SIZE	DWG. NO.	REV
D	ATC-216x96SSF-5inC	A
SCALE: 1:16/WEIGHT:		



MONITOR
MOUNT

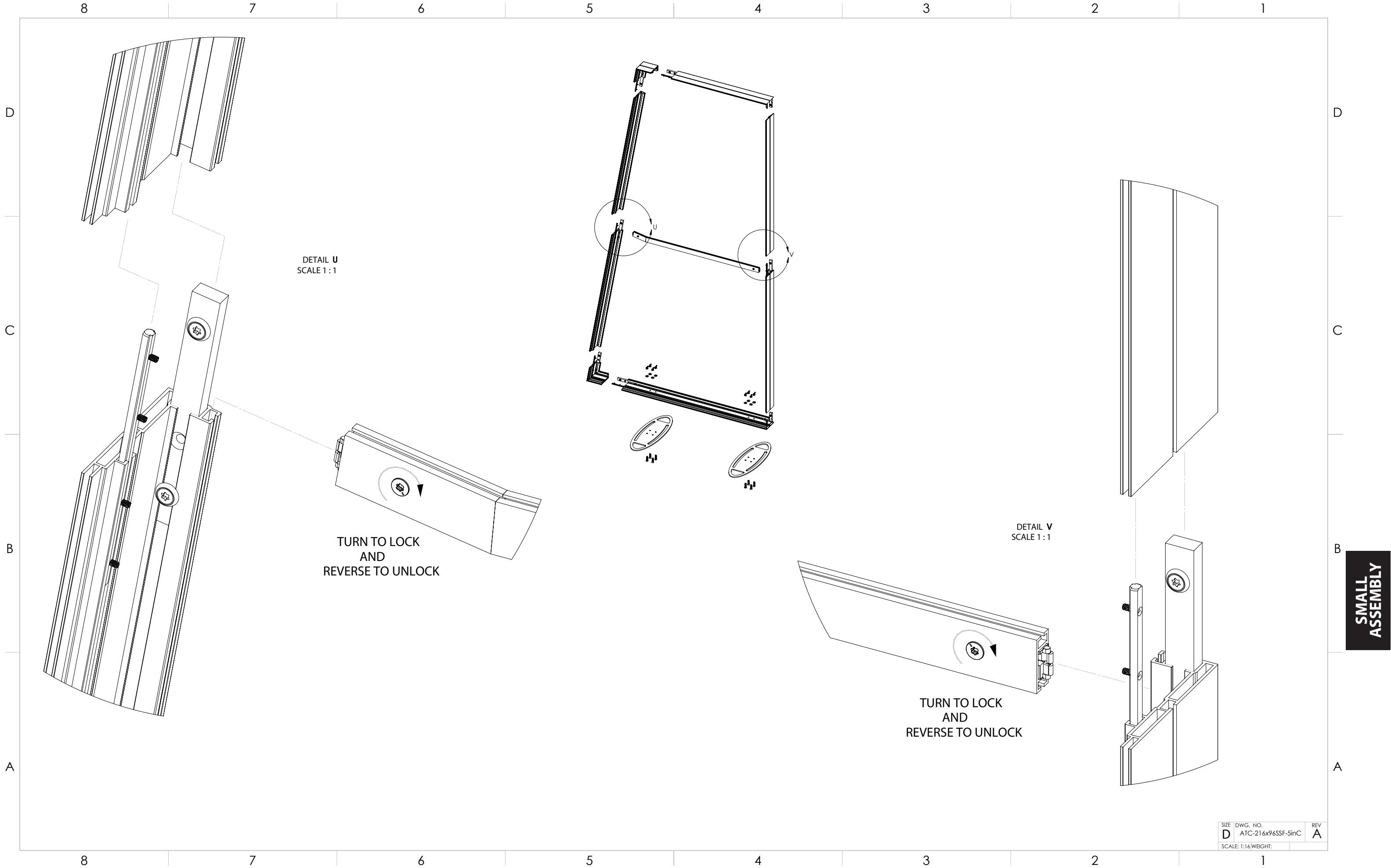
SIZE	DWG. NO.	REV
D	ATC-216x96SSF-5inC	A
SCALE: 1:16/WEIGHT:		





SMALL
ASSEMBLY

SIZE	DWG. NO.	REV
D	ATC-216x96SSF-SinC	A
SCALE: 1:16/WEIGHT:		



SIZE	DWG. NO.	REV
D	ATC-216x96SSF-5inC	A
SCALE: 1:16/WEIGHT:		

Silicone Edge Graphics (SEG)

Installation Instructions into hardware

What are Silicone Edge Graphics (SEG)?

SEG are dye-sublimation fabric graphics with silicone strips sewn along the underside of the fabric's edge. SEG frames have grooves along their perimeter designed to snugly hold the silicone strips so the fabric can be stretched across the frame for a drum-tight fit.



We recommend laying the frame on the floor, then draping the fabric graphic on top.

The following procedure ensures the silicone edge will be placed evenly over the entire frame and NOT STRETCH or GROW at the corners. **Once all the edges have been secured, you should have a taut fit with a smooth flat finish.**

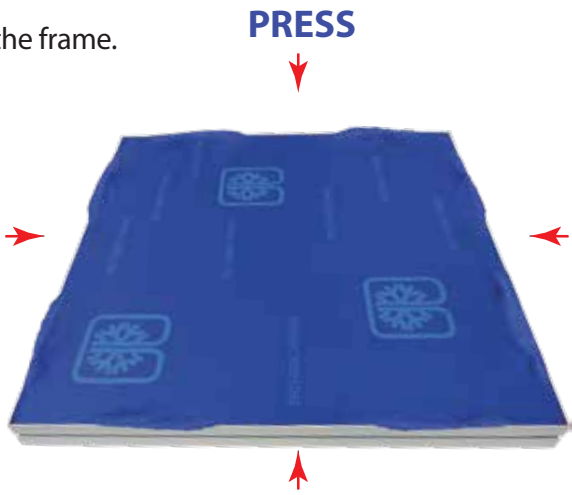
1: With Clean Hands,

Press SEG silicone edge first, into the corners of the frame.



2: Working in Centers.

Go back and press the silicone edge into the center - on each side of the frame.
EXAMPLE: A 20"x20" fabric/frame would be pressed in 8 locations.



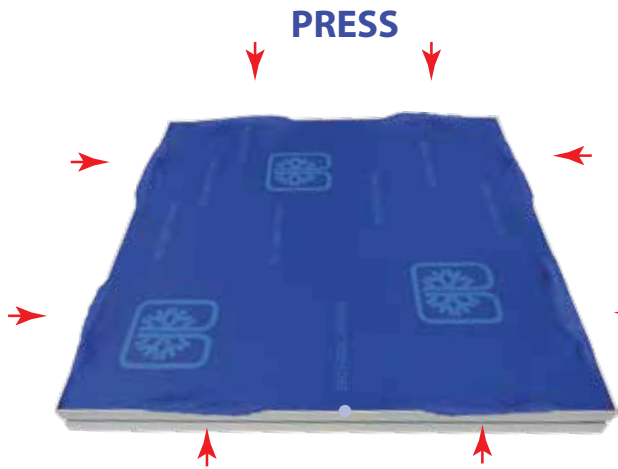
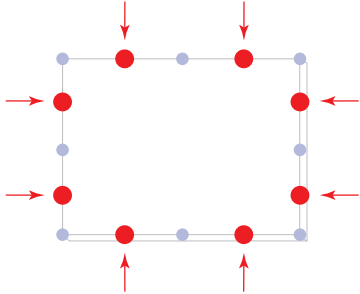
Cont'd.

3: Working in Centers again,

Go back and press the silicone edge once again on each side previous center, on all 4 sides.

Repeat this process, (WORKING IN CENTERS) until the SEG fabric's edge is pressed approximately every 6 inches apart.

EXAMPLE: A 8' x 8' frame (using this procedure) will have been pressed/tucked 15 times (not including corners) on each side of the frame.



4: After all has been pressed into your frame using

this procedure, lightly tap your forefinger to smooth fabric between the tucks.



FABRIC CARE INSTRUCTIONS

FOLDING:

Due to the fine quality, smoothness and weave of the fabric, great care must be taken to extend the life of your SEG fabric graphics.

We recommend **very loosely** folding your graphic, making sure there are **no hard creases or folds or that the fabric doesn't catch on sharp objects.**

STORING:

Store in a clean bag. A plastic bag or pillowcase is ideal. Graphics can also be spot cleaned with a damp cloth.

WASHING:

To wash entire graphic, use a commercial size front loading washing machine on gentle cycle with cool water. **DRY GENTLE-LOW HEAT DO NOT DRY CLEAN.**

IRONING:

You can also gently iron the back side using the Polyester setting of your iron.



RETAIN ALL PACKING MATERIAL

will make re-packing easier and reduce the likelihood of shipping damage.

TIGHTEN ALL SET SCREWS AND LOCKS

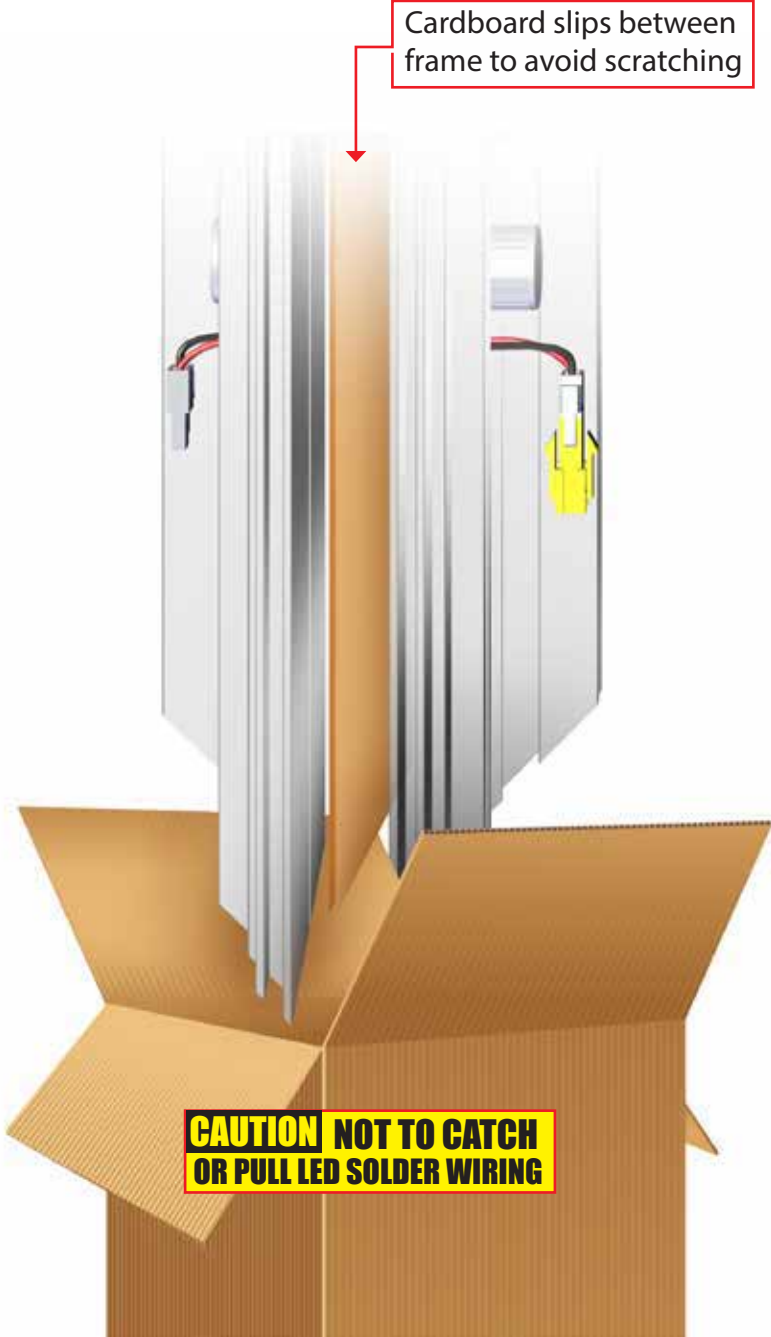
when disassembling aluminum extrusions, to prevent loss during shipping.



CASE 1 - 108" X 96" FRAME
Description
(5) Boxes with frame and parts
(1) Dye-Sub Graphic (1) Fabric Backer
LIGHTLY FOLD GRAPHICS - DO NOT CREASE

CASE 2 - 94" X 90" FRAME
Description
(5) Boxes with frame and parts
Monitor Mount
(1) Dye-Sub Graphic (1) Fabric Backer
LIGHTLY FOLD GRAPHICS - DO NOT CREASE

CASE 3 - 55" X 96" FRAME
Description
(5) Boxes with frame and parts
(1) Dye-Sub Graphic (1) Fabric Backer
LIGHTLY FOLD GRAPHICS - DO NOT CREASE



STEP 1



Feed strap thru strap divider

STEP 2



Pull strap up and backwards

STEP 3



Smooth strap down and snugly fasten strap via hook & loop

CLEANING / CARE INSTRUCTIONS

Use care when cleaning aluminum extrusion.
Use only non-abrasive cleaners.

When cleaning laminate, metal fusion or counter tops
use mild cleansers and a soft material such as cotton.

Keep all display components away from extreme heat and
long exposure to sunlight to avoid warping and fading.