

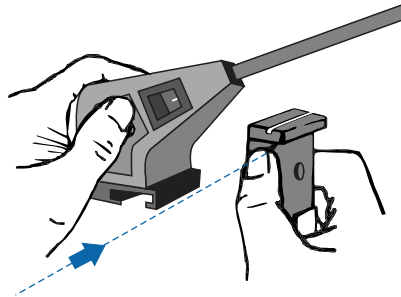
Contents of Case



- Frame
 - Channel Bars in Bag
 - Center Panels
 - Endcaps
 - Halogen Light(s)
 - Emergency Repair Kit
 - Fabric or Graphic Case Wrap*
- *Not always included

Installing Lights

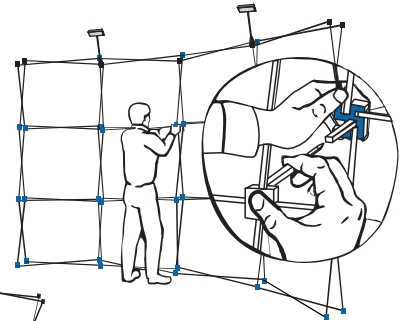
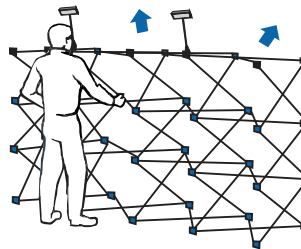
Position frame in front of you with the Black hubs at the top, and facing you.



STEP 1

Expanding the Frame

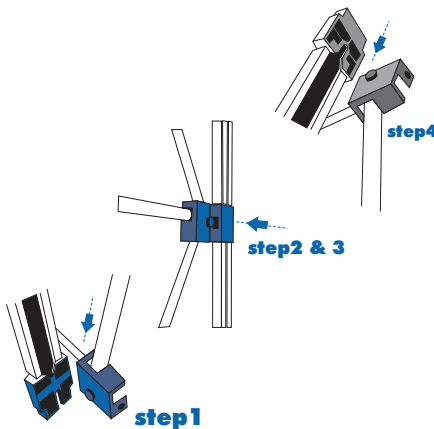
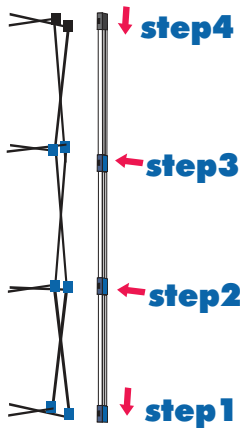
Pull the frame upwards extending in all directions.



Lock ALL the connectors

STEP 2

Channel Bars

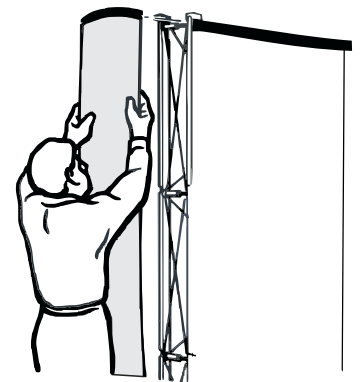
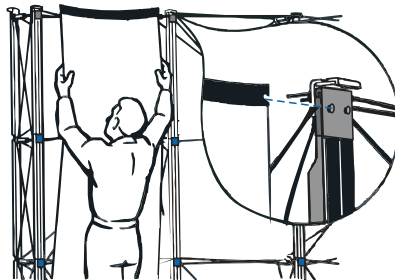


STEP 3

Attaching Panels

Attach panels in order, left to right or right to left, and finish with the end caps.

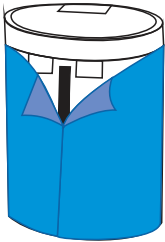
It may be necessary to adjust panels for improved alignment.



STEP 4

Case to counter conversion

Wrap fabric/graphics around the case as shown.



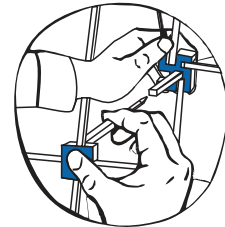
Place top piece into grooves on the case lid.



Disassembly & Repacking

- 1 Remove panels starting at the bottom and carefully pulling upward, then unhooking from the hubs at the top. Roll all the panels together with the graphic/fabric facing outward.
- 2 Starting at the top, remove the channel bars and pack in their carry bag.

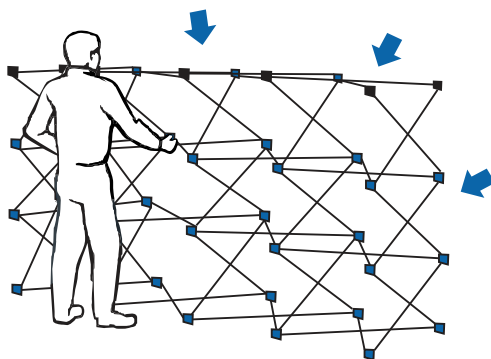
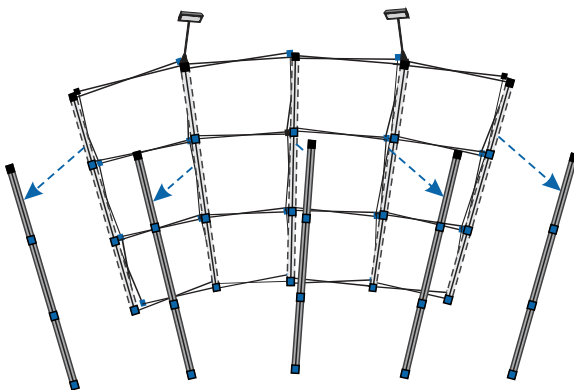
Before collapsing frame, release ALL connectors by depressing lever.



- 3 Stand in front of the frame and collapse it by gently pulling the left and right sides together as shown. The display will collapse with minimal effort.
- 4 Pack components as shown.



Note: When stored, panels must be rolled with fabric/print outside.



LIMITED WARRANTY

Camelback Displays extends warranties to all its product lines to ensure customer satisfaction.

The pop up frame is backed by a limited lifetime warranty against manufacturer's physical defects in materials or workmanship under normal use by the original owner.

For other pop up components – channel bars, cases, light fixtures, shelving, and accessories – the warranty period is one year.