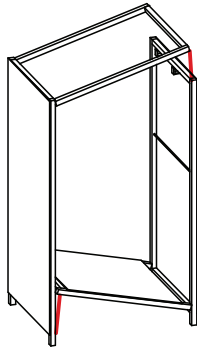
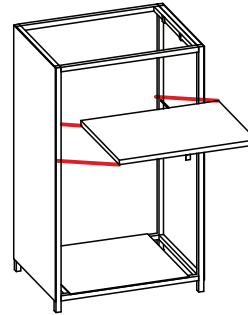


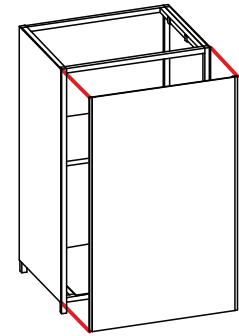
Stand the 2 side units apart as shown



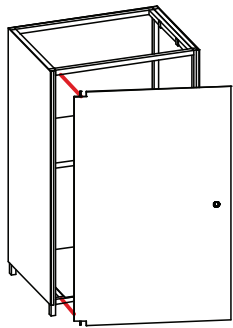
Swivel the cross braces into place and secure them as shown



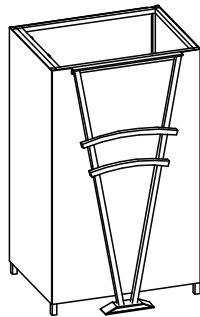
Insert the shelf



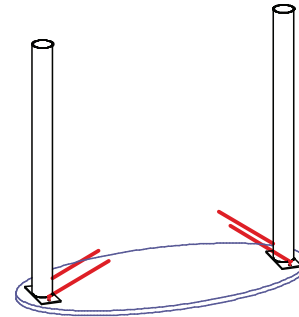
Attach the rear panel to the back side of the counter (the side with the velcro strips top & bottom)



The door has pins located top and bottom, the pin on top is longer than the bottom one, to install tilt the door and insert the top pin into the frame, then align the bottom pin and gently lower the door into position.



Apply front accessory trim by standing it in front of the counter and then pressing the top edge with the velcro against the front of the counter



Place the counter top upside down on a clean surface and attach the leg posts by lining up the holes in the as shown and fastening in place with 4 wingnuts



Carefully flip the counter top over and place over the main unit making sure to line up the velcro strips on the underside on the counter top

*Please note: Accessory trim and counter top shape may differ depending on which model you purchased*