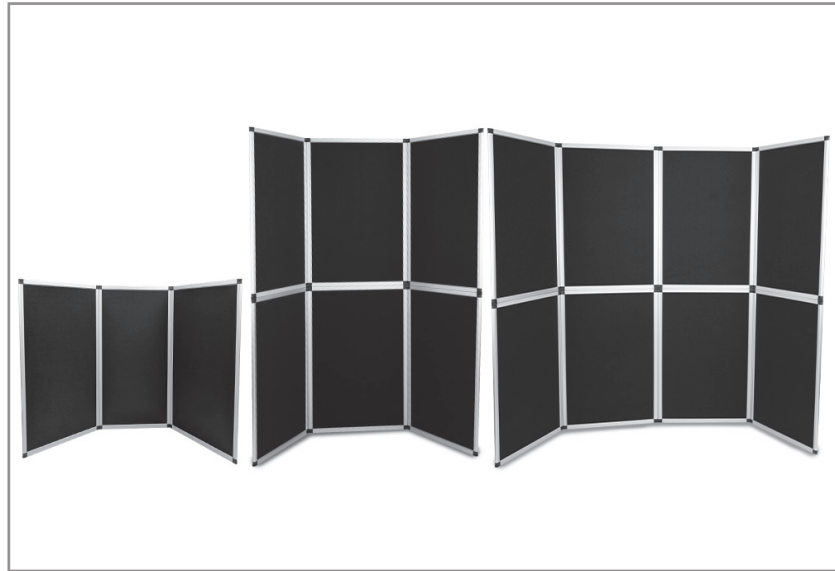
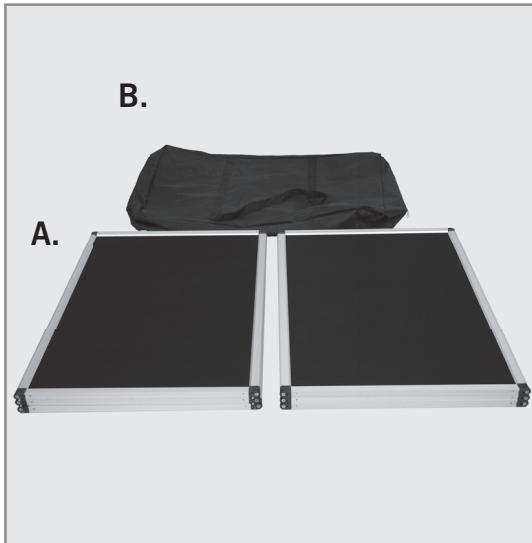
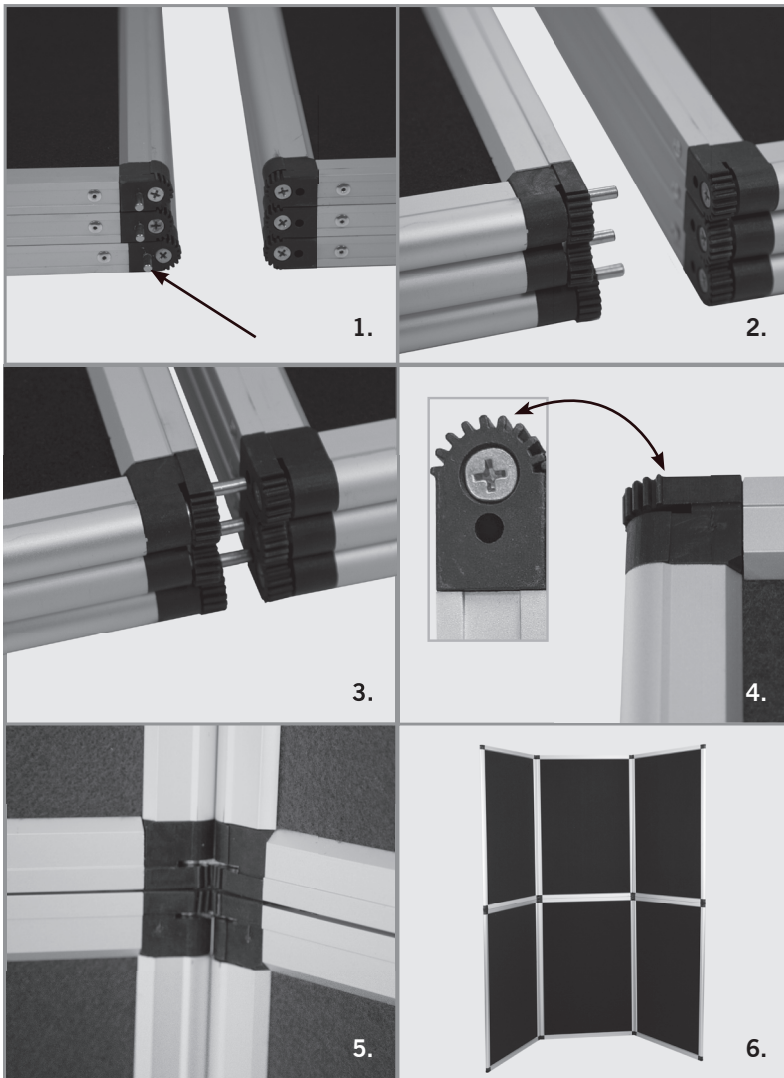


ASSEMBLY HARDWARE



ASSEMBLY



NOTE: 3-panel displays do not require assembly. Follow the instructions below if you purchased a 6- or 8-panel display. Additional people may be required for larger displays.

1. Take the display out of the carrying case and determine which set of panels has the removable pegs attached.
2. Line up the pegs with the holes on the other panels.
3. Slowly push the panels together. This can be done with the panels lying flat on the ground or standing up.
4. If the pegs do not line up with the holes, check the black nylon tab and look to see if it is pinched down. This could be due to the screw being screwed on too tight. Use a Philips head screwdriver to loosen up the screw slightly. This should realign the hole.
5. The two sets of panels will sit flush against each other when they are connected.
6. The folding panel display is now ready to be used.