

# LIGHTBOX DISPLAYS

ONE CHOICE - 8 FT SEG POP UP DISPLAYS

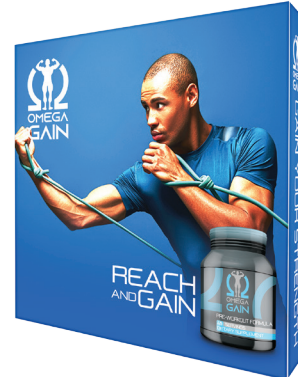
PRODUCT CODE: OC-SEG3X3



Non-Lit Front View



Front View



Back View

## PRODUCT DESCRIPTION

Portable and affordable One Choice SEG Pop Up is a quality LED backlit display. Geometric frame expands to set up and shrinks down to put away for convenient storage, shipping or toting. Use step-and-repeat or any edge-to-edge custom design. Silicone-edge, dye sub fabric graphics cover front, sides and rear of backwall.

## FEATURES

### DISPLAY DIMENSIONS

- 88 1/2" W x 89" H x 15" D

### GRAPHIC DIMENSIONS

- 117 3/4" W x 88 3/4" H (Front - Includes End Caps)
- 88 1/2" W x 88 3/4" H (Backside)

### GRAPHIC MATERIAL

- Dye-Sub Fabric

### GRAPHIC FINISHING

- Silicone beading is sewn around the perimeter of the fabric graphic. Silicone beading is hidden from view once installed.

### DISPLAY CONSTRUCTION

- Aluminum frame

## WEIGHTS & DIMENSIONS (WITH STAND & GRAPHICS)

### SHIPPING WEIGHTS

- (Qty 1): 66 lbs

### PACKAGE DIMENSIONS

- (Single Box):  
16" L x 16" W x 38" H

## TURNAROUND TIME

### GRAPHIC PACKAGE

- 2 business days after proof approval\*

### AVAILABILITY

- WEST COAST FULFILLMENT CENTER

\*After proof approval, for **up to 4 sets**. Reply with approval via e-mail by 4:00pm PT the day prior to the assigned ship date.



# LIGHTBOX DISPLAYS

ONE CHOICE - 8 FT SEG POP UP DISPLAYS

PRODUCT CODE: OC-SEG3X3

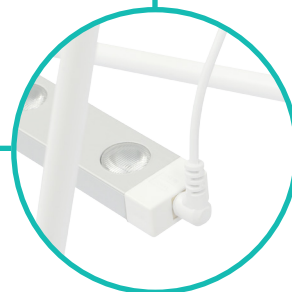


## LED FEATURES

### EDGE LIGHTS



### JUMPER CORDS



### LED STRIP FEATURES

**POWER PER LED PEARL**  
• 4.5 W

**LM / W**  
• 104

**VOLTAGE INPUT**  
• 24V

**POWER PER LED BAR**  
• 90 W

**AVG LM / m<sup>2</sup>**  
• 4100 - 5400

**CORRELATED COLOR TEMPERATURE (CCT)**  
• 7236K

### TRANSFORMER FEATURES

**INPUT (AC)**  
• 100 / 120V

**POWER RATE**  
• 95W

**OUTPUT (DC)**  
• 24V

# LIGHTBOX DISPLAYS

ONE CHOICE - 8 FT SEG POP UP DISPLAYS

PRODUCT CODE: OC-SEG3X3



## PARTS LIST



**QTY 1:**  
**Travel Bag with Wheels**

**Outside Dimensions:**  
• 35" L x 13" W x 10" H  
**Inside Dimensions:**  
• 35" L x 13" W x 10" H



**QTY 1:**  
**3x3 Pop Up Frame**

• 34 1/8" L x 6 1/2" W x 7 1/4" H  
(Collapse Frame)



**QTY 8:**  
**3 Sectional Channel Bars**

• 85 7/8" L x 1 1/16" W  
(When assembled)



**QTY 1:**  
**Channel Bar Bag**

**Outside Dimensions:**  
• 32" L x 6" W x 3 1/2" H  
**Inside Dimensions:**  
• 31 1/2" L x 6" W x 2" H



**QTY 2:**  
**Stabilization Feet**

• 23 1/4" L x 2 3/8" W x 3/8" H

# LIGHTBOX DISPLAYS

ONE CHOICE - 8 FT SEG POP UP DISPLAYS

PRODUCT CODE: OC-SEG3X3



## PARTS LIST



**QTY 1:**  
**Edge Light Travel Bag**

**Outside Dimensions:**  
• 28" L x 6" W x 7 1/4" H  
**Inside Dimensions:**  
• 28 1/4" L x 6 1/8" W x 6 3/4" H



**QTY 6:**  
**Edge Lights**

• 26 3/8" L x 13/8" W x 13/4" H



**QTY 3:**  
**Edge Light Jumper Cords**

• 82" H



**QTY 3:**  
**Transformers**

• 5 1/8" L x 2 1/4" W x 1 1/4" H  
(Transformer)  
• 58" L  
(Cord Length)



**QTY 3:**  
**Power Cords**

• 40" L

# LIGHTBOX DISPLAYS

ONE CHOICE - 8 FT SEG POP UP DISPLAYS

PRODUCT CODE: OC-SEG3X3



## CARE SHEET - DYE-SUB FABRIC

### HANDLING TIPS

1. If your exhibit fabric has a zipper, please keep zipper closed for storage.
2. Wrinkles can be removed with cool iron or fabric steamer.
3. Fabric should NOT be stored when damp or wet. Store in cool, dry area.
4. For storing graphics please remove from plastic packaging that was provided and keep fabric in cool/dry place.

### WASHING

1. Your fabric graphic can be machine washed. Remove any hardware attached to the fabric prior to cleaning. Use MILD soap and cool water. Air dry fabric, dry on frame if frame is available.
2. Fabric must be COMPLETELY dry prior to storing.
3. DO NOT DRY CLEAN

### STAIN TREATMENT

1. Treat stain from backside of fabric.
2. Remove as much debris as possible with a soft bristle brush (do NOT rub too hard).
3. Use a clean, lint-free white cloth. Lightly pat the stain from the outside moving in (to keep stain from spreading).
4. If a cleaning solution is used, rinse the area well with water to ensure NO solution is left on fabric.
5. Most stains can be treated with household fabric stain removers. It is ALWAYS important to test how the solution will react to the fabric. This can be tested by dabbing solution to a small corner of the fabric. Most household cleaners will provide treatment instructions depending on the type of stain.



- Wrinkles can be removed from fabric with a cool iron or steamer.



- Fabric can be machine washed - use cold water, delicate cycle.



- Do NOT bleach fabric



- Do NOT tumble dry. Fabric must be air dried on the frame to prevent shrinking.