

# LIGHTBOX DISPLAYS

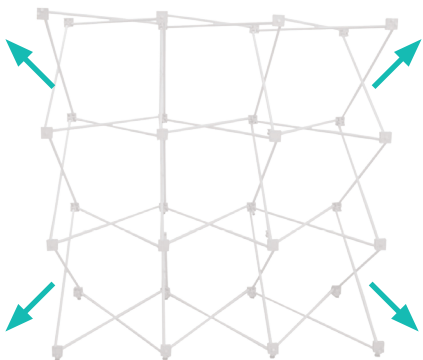
ONE CHOICE - 8 FT SEG POP UP DISPLAYS

PRODUCT CODE: OC-SEG3X3



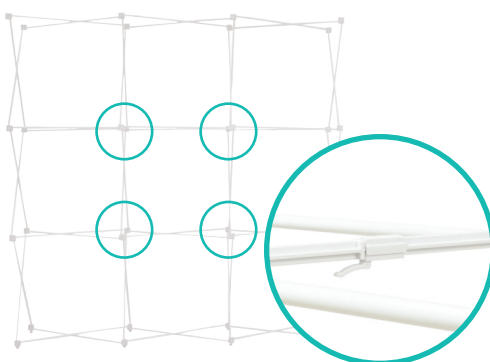
## INSTRUCTIONS

1



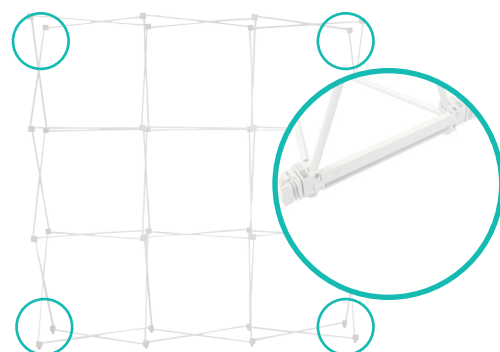
- Place frame with the adjustable feet facing down. Expand the frame.

2



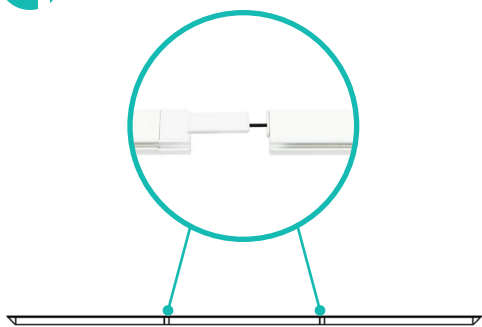
- Close frame by pushing the outside of the frame until male and female ends connect. Repeat for all connectors.

3



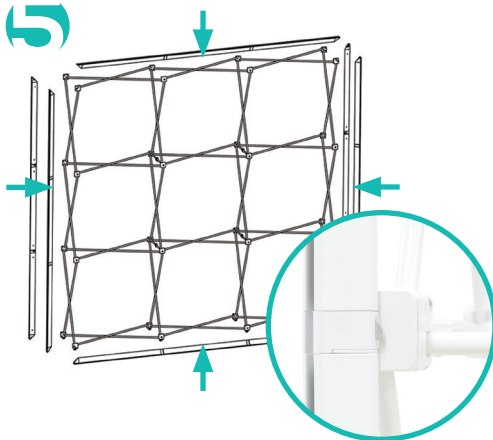
- Connect the top and bottom End Caps on each side of the frame.

4



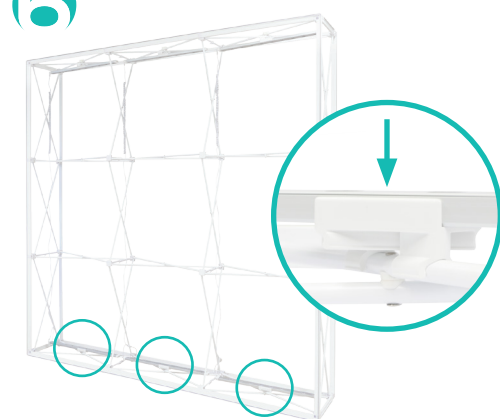
- Expand each Channel Bars. Follow bungee to connect.

5



- Attach channel bars to frame. Slide channels bars onto frame, from top to bottom, then secure onto metal peg.

6



- Snap the Edge Lights on each bottom middle "x" bars.

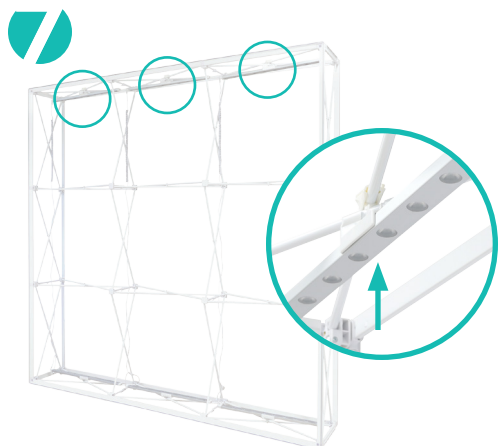
# LIGHTBOX DISPLAYS

ONE CHOICE - 8 FT SEG POP UP DISPLAYS

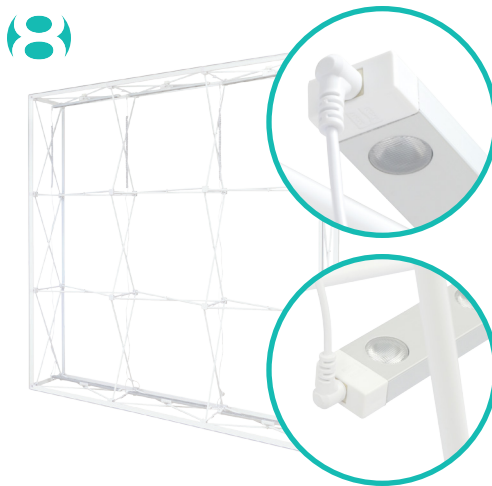
PRODUCT CODE: OC-SEG3X3



## INSTRUCTIONS



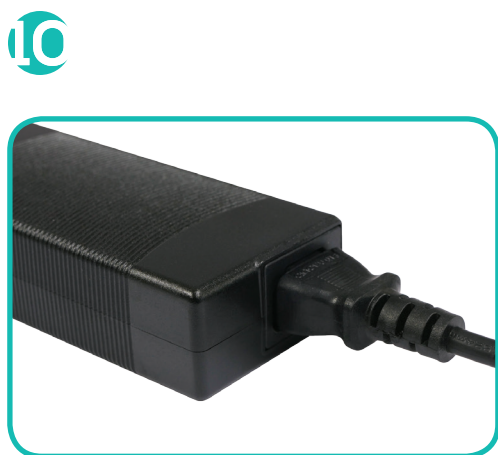
- Then snap the Edge Lights on each top middle "x" bars.



- Plug the Jumper Cords into the top and bottom Edge Lights together.



- Connect the Jumper Cord to the Transformer using the barrel connectors.



- Insert power cord to the Transformer. Plug other side into your main power outlet (Once graphics are installed onto the frame).



- Install one piece graphic on the front side of the frame. Start on each corner of the end caps. Insert the silicone edge beading into the groove corners (top & bottom). Repeat graphic installation on other side the end caps.



- Then insert the remainder of the beading of the one piece graphic. Repeat graphic installation on the back side of the frame.