

# ROLL UP BANNERS

EASY CHOICE - 33.5 IN. BETTER ROLL UP  
BANNER STAND

PRODUCT CODE: OC-STPY33.5X80SFLATG



Front View



Angle View

## PRODUCT DESCRIPTION

A step up from the Good Roll Up is the Better Roll Up. With a sophisticated base, the Better Roll Up is a stylish choice in portable retractable displays. The custom printed graphic banner attaches to the top of the pole by clamp bar and to the base with adhesive tape.

## FEATURES

### DISPLAY DIMENSIONS

- 35" W x 80" H x 9 1/2" D

### GRAPHIC DIMENSIONS

- 33 1/2" W x 80" H

### GRAPHIC MATERIAL

- UV Printed Super Flat Vinyl

### GRAPHIC FINISHING

- Cut to size with 5" leader panel bleed

### DISPLAY CONSTRUCTION

- Sturdy Aluminum Construction

## WEIGHTS & DIMENSIONS (WITH STAND & GRAPHICS)

### SHIPPING WEIGHTS

- (Qty 1): 13 lbs
- (Qty 4): 55 lbs
- (Qty 10): 480 lbs

### PACKAGE DIMENSIONS

- (Single box): 10" L x 5" W x 37" H
- (Master Boxes): 11.5" L x 21" W x 38" H
- (Freight): 48" L x 40" W x 58" H skid

## TURNAROUND TIME

### GRAPHIC PACKAGE

- 2 business days after proof approval\*

### AVAILABILITY

- WEST COAST FULFILLMENT CENTER

\*After proof approval, for **up to 20 sets**. Reply with approval via e-mail by 4:00pm PT the day prior to the assigned ship date.



# ROLL UP BANNERS

EASY CHOICE - 33.5 IN. BETTER ROLL UP  
BANNER STAND

PRODUCT CODE: OC-STPY33.5X80SFLATG



## PARTS LIST



**QTY 1:**  
**Travek Bag**

**Outside Dimensions:**

• 36" L x 10" W x 5" H

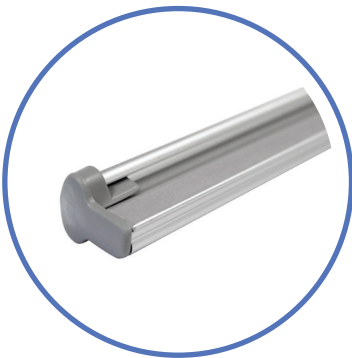
**Inside Dimensions:**

• 36" L x 9" W x 4 1/2" H



**QTY 1:**  
**Best Roll Up Stand**

• 35" L x 9 1/2" W x 3" H



**QTY 1:**  
**Clamp Bar**

• 33 3/4" L x 1 1/2" W x 1" H



**QTY 1:**  
**Telescopic Pole**

• 70 1/8" H (When assembled)  
• 98" H (When Telescopic Pole extends)