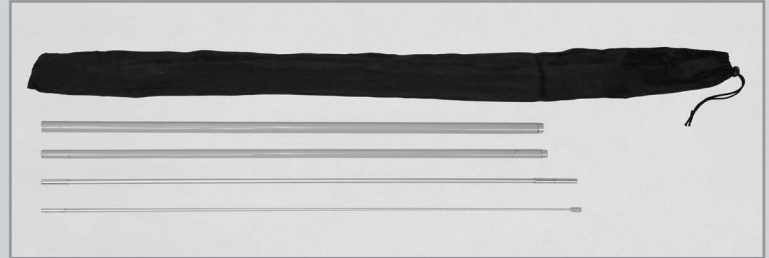


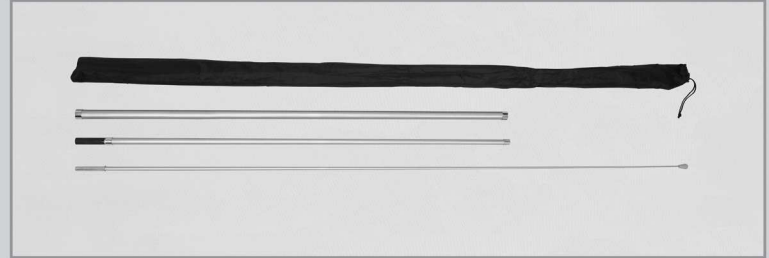
ASSEMBLY HARDWARE



BOWFLAG® BASIC HARDWARE



BOWFLAG® PLUS HARDWARE



Clamp

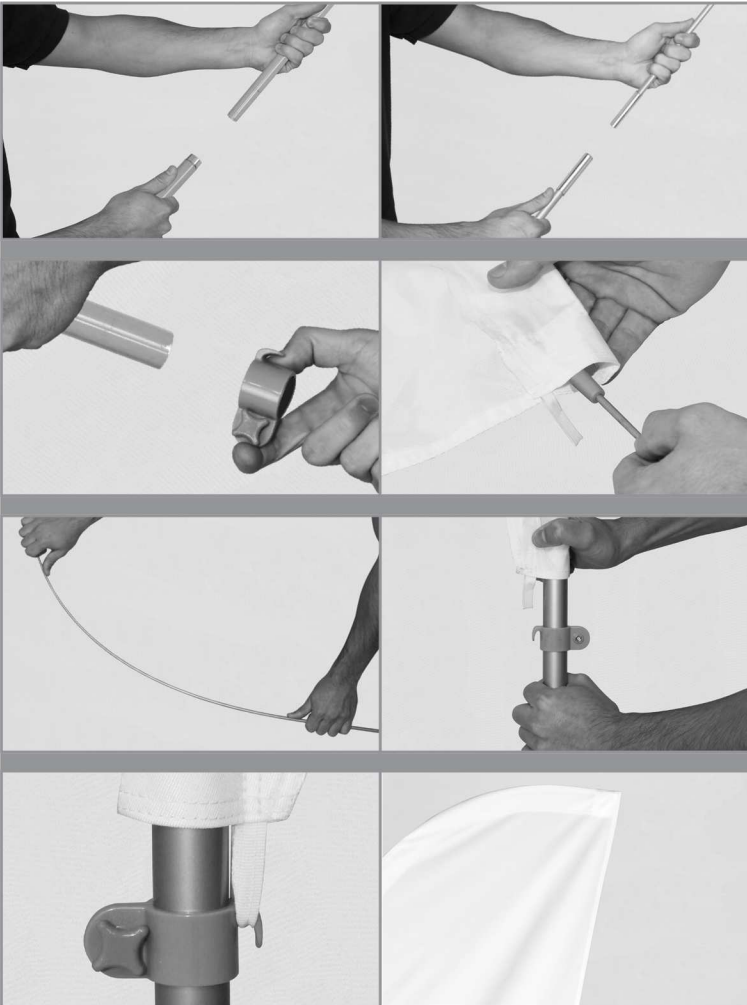


Tip

Wind Speed Recommendations:

- Bowflag® Basic SR:
25-30mph (6bft)
- Bowflag® Plus SR:
55-63mph (10bft)

ASSEMBLY



1. Assemble the pole set. The poles will be assembled from largest diameter pole on the bottom to the smallest diameter pole at the top. There is only one correct order the poles can be assembled.

2. Slide clamp onto the bottom of the pole assembly (clamps are specific to size of product).

3. Insert assembled pole set into the print pole sleeve.

4. The flexible fiberglass pole will curve to the shape when the flag is fully taut. Pull the print and the pole sleeve downwards towards the clamp located on the bottom pole.

5. Tighten clamp at a location where the print will be fully taut. Pull print taut and attach tab to the clamp.

6. Make sure the tip of the pole is fully inserted into the reinforced pole tip on the print. Mount the whole assembly using one of the available bases.



The Bowflag® Basic and Plus have been wind tunnel tested in order to provide our customers with the most durable flag system, even when using double-sided flags. Do not fly your Bowflag® in extreme winds (any wind speed exceeding what is listed above) and/or thunderstorms.

Do not use near overhead wires. User must read and observe construction sheet. If this is not done correctly it may result in damage to the unit, injury, or death, and all warranties will be void.

