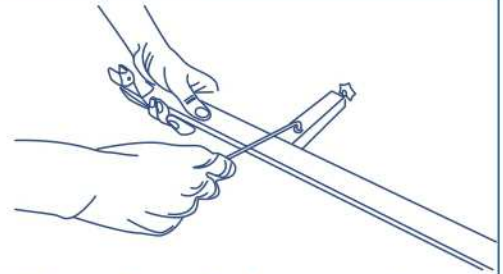
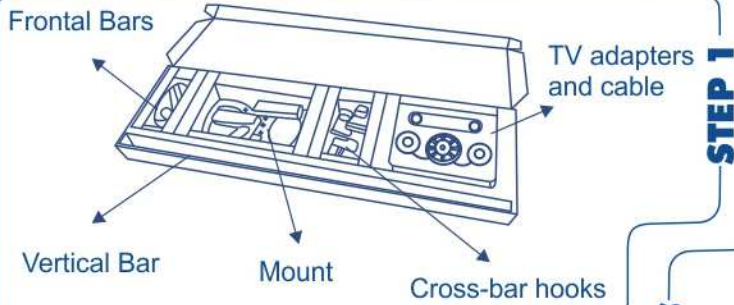
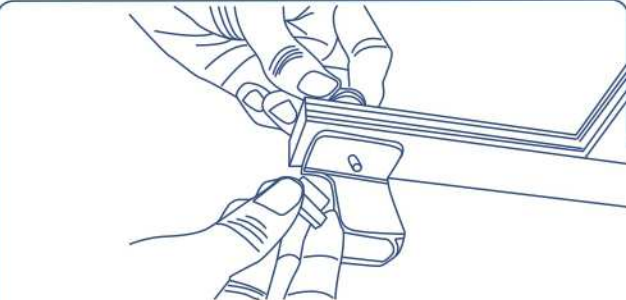


# XL Monitor Mount

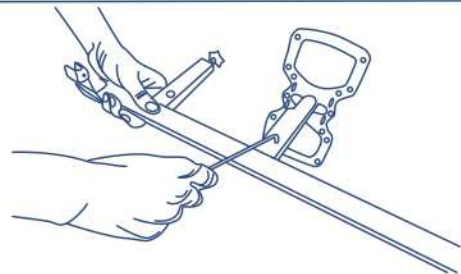


Install the frontal bar on the vertical bar by inserting in the selected position and tightening the screw with the Allen key.

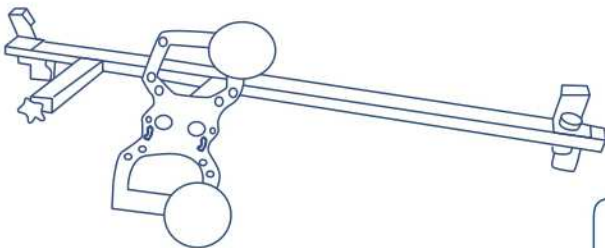


Attach the cross-bar hooks to the vertical bar, securing them with thumb screws as shown.

**STEP 2**  
**STEP 3**  
**STEP 4**



Attach the mount to the vertical bar, by inserting the metallic bar in the selected position and tightening the screw with the Allen key.



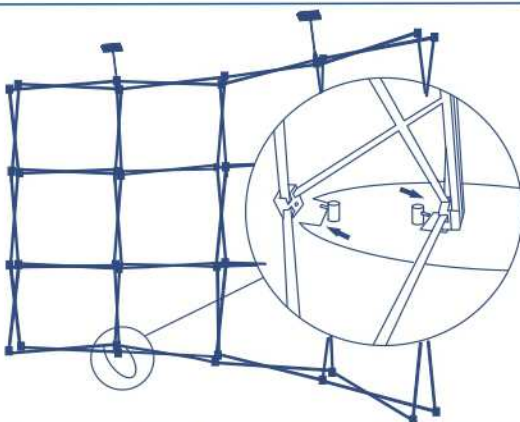
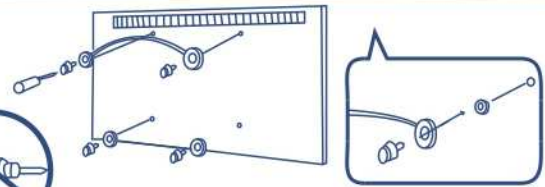
The completed XL Mount should look like this.

**STEP 5**



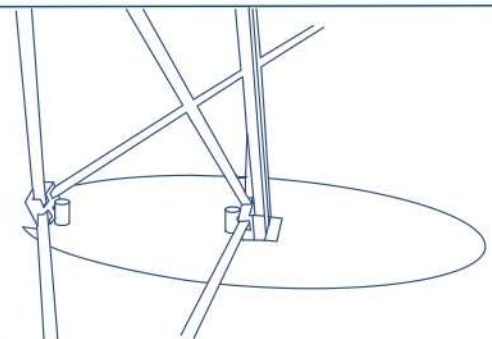
**STEP 6**

Attach the hanging cable by securing the round adapters to the back of your screen. Every TV will use a different type of screw, make sure to consult your TV manual.



Select location of the base plates and place the frame on top of them. Expand the bottom hubs to align with the pins on the base.

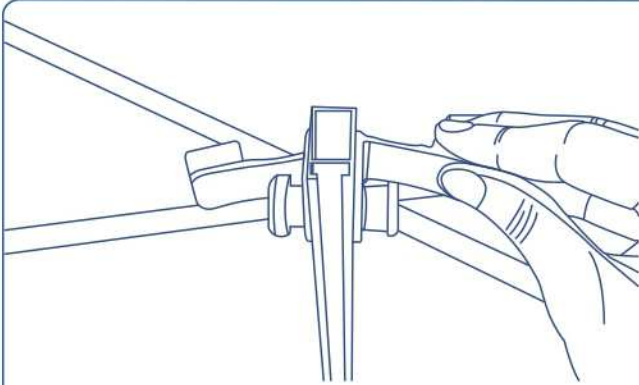
**STEP 7**  
**STEP 8**



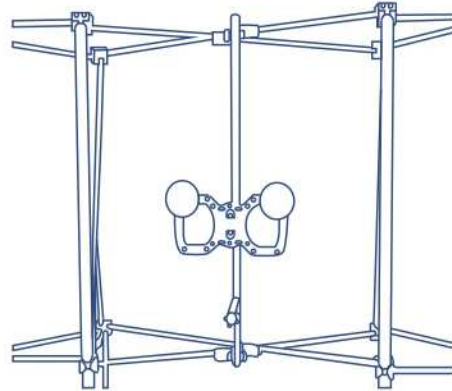
Insert the pins on the base into the internal side of the hubs on the bottom of the popup frame.

## XL Monitor Mount

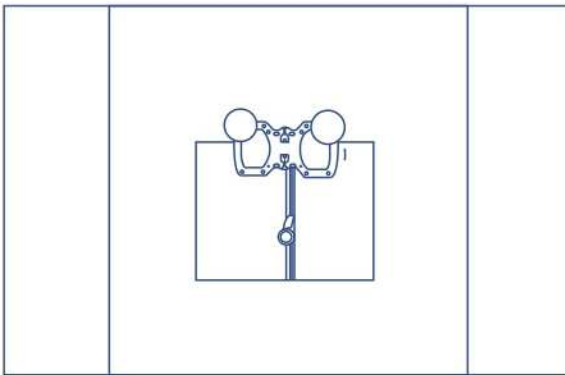
**STEP 9**



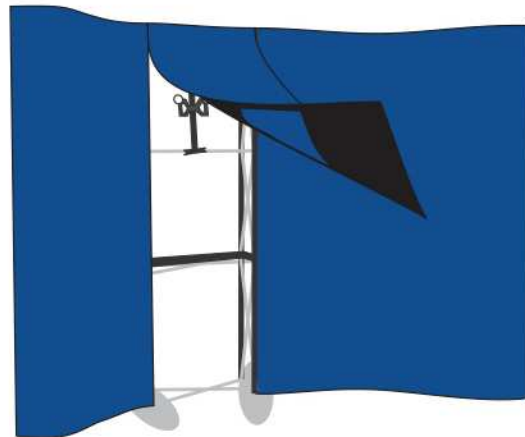
Lift the XL mount above the cross-bars of your desired location, and hang on top and bottom cross-bars at the same time.



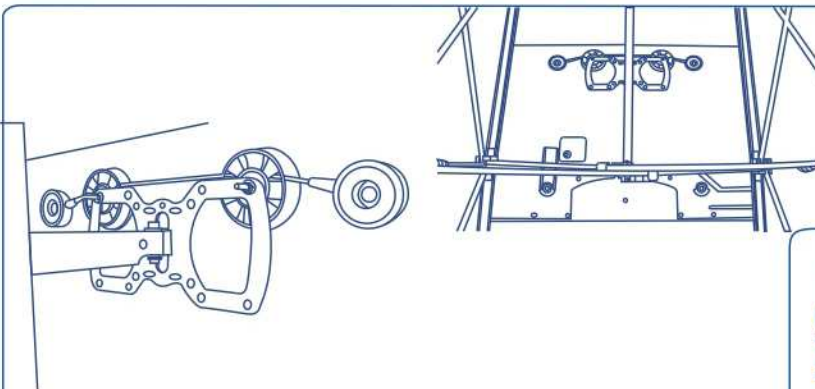
**STEP 10**



Install fabric/graphic panels on the channel bars. Make sure to have the XL mount go through the opening on the panel.

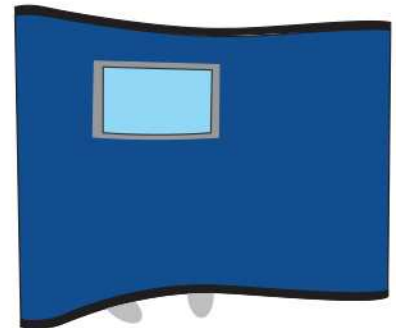


**STEP 11**



Hang the screen on the mount, by aligning the cable on the round silver discs.

**STEP 12**



Connect power cables. You are ready to use your Energy Popup with XL Mount.