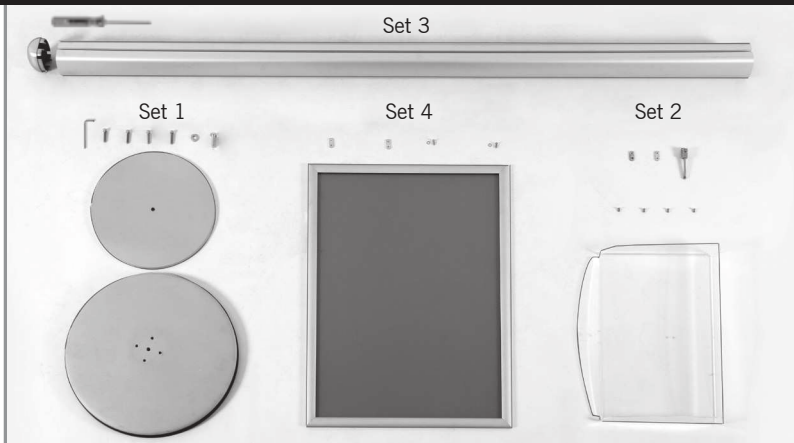


Snap Frame Info Board

R2.011911



SET 1

- Base plate
- Weight plate
- 4 socket screws (6mm)
- Hexagonal screw (10mm)
- Washer
- Allen wrench

SET 2

- Literature Holder
- 4 screws
- 2 flat connectors (one with a threaded hole)
- Plastic support bracket

SET 3

- Pole
- End cap
- Screwdriver

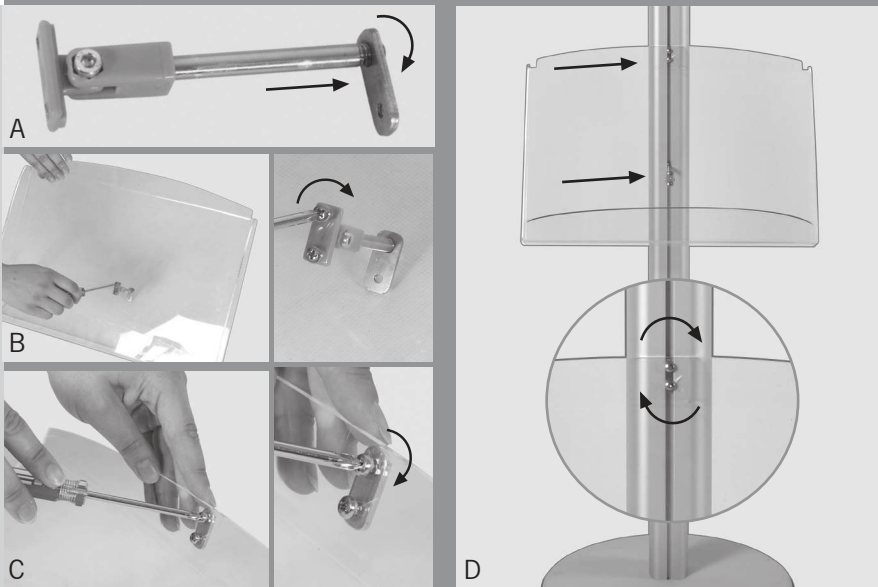
SET 4

- Snap frame
- 2 flat connectors
- 2 screws
- 2 washers



ADJUSTABLE WRENCH IS NEEDED FOR BASE ASSEMBLY. THIS IS NOT INCLUDED.

1. Use the socket screws from Set 1 to install the base plate onto the pole using the allen wrench.
2. Under the base, screw the weight plate along with the hexagonal screw and washer using an adjustable wrench.



FOLLOW STEP 3 FOR INFO BOARDS WITH OPTIONAL LITERATURE HOLDER; OTHERWISE CONTINUE TO STEP 4.

- 3A. From Set 2, find the flat connector with the threaded hole. Secure the flat connector by gently tightening it to the rod of the plastic support bracket.
- 3B. Screw the plastic support bracket to the literature holder using the screwdriver and two screws.
- 3C. Install the second flat connector with two screws onto the holder (leave a sizable gap between the literature holder and the flat connector).
- 3D. To install the literature holder, insert both flat connectors into the slot of the pole. Adjust to the desired height and tighten screws.



4. Open the snap frame on opposite sides (decide whether it will be in portrait or landscape format). Locate the center of the frame perimeter and install the flat connectors with the screws and washers from Set 4.
5. Insert the snap frame with the flat connectors into the slot of the pole. Adjust to the desired height and tighten screws.
6. Install the end cap from Set 3 onto the top of the pole.

PRINT INSTALL

Open all snap frame sides. Remove clear protective cover. Insert the advertising graphic. Replace the clear protective cover over the advertising graphic. Snap sides of the frame closed.



Do not set up your Snap Frame Info Board in extreme winds (24-31 mph or higher) and/or severe storms. User must read and observe construction sheet. If this is done incorrectly it may result in damage to the unit, injury or death, and all warranties will be void.

