

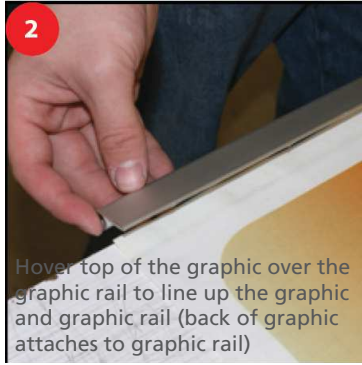
## Graphic Application

1



Remove paper backing from the tape on the graphic rail

2



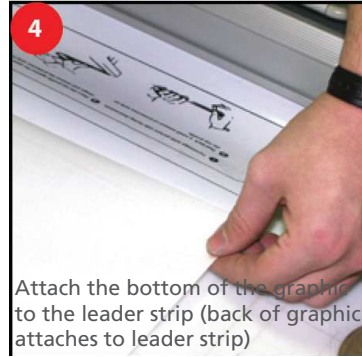
Hover top of the graphic over the graphic rail to line up the graphic and graphic rail (back of graphic attaches to graphic rail)

3



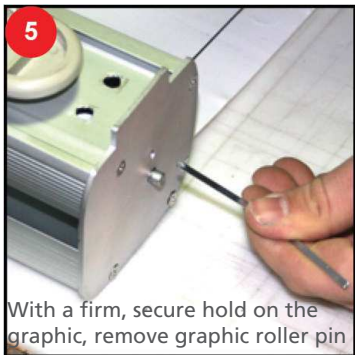
Remove paper backing from the tape on the leader strip

4



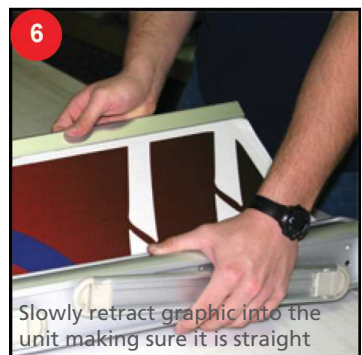
Attach the bottom of the graphic to the leader strip (back of graphic attaches to leader strip)

5



With a firm, secure hold on the graphic, remove graphic roller pin

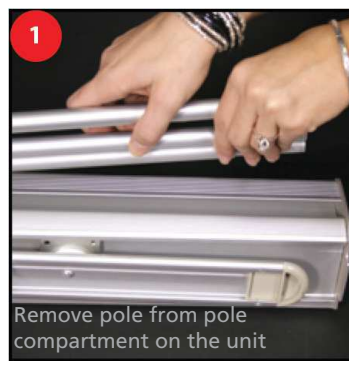
6



Slowly retract graphic into the unit making sure it is straight

## Unit Instructions

1



Remove pole from pole compartment on the unit

2



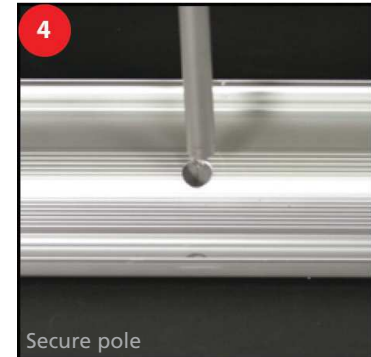
Secure the stabilizing feet at 90 degree position to the unit

3



Assemble poles

4



Secure pole

5



Gently un-retract graphic from unit

6



Secure the graphic rail to the top of the pole