

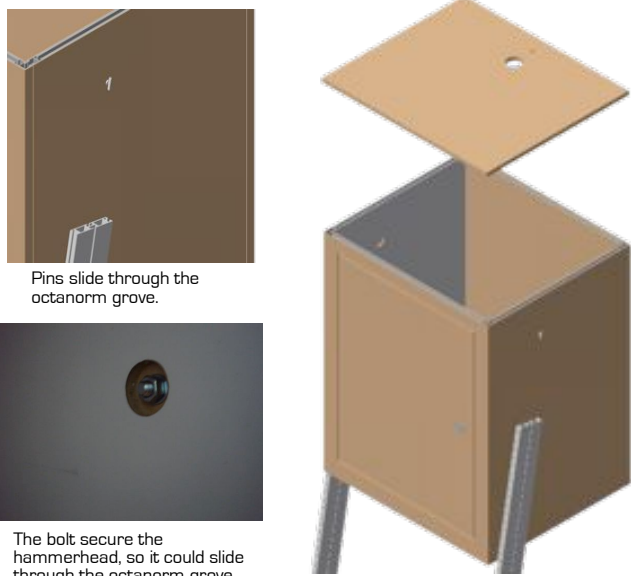
Attach the octanorm to the base by screwing it using the hardware and tools provided.



Assembled the octanorm as seen above. Each panel has button that allows to be assembled.



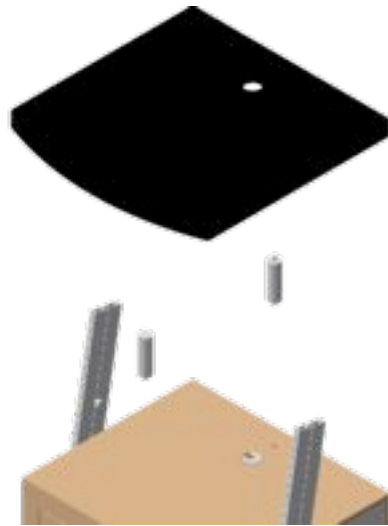
Place the pins into the groove of the octanorm. Also place the standoff barrels into the base of the kiosk. Slide the bottom of the counter until it the counter base rest on the pins that are on the octanorm. (See picture above for pins detail).



Pins slide through the octanorm groove.

The bolt secure the hammerhead, so it could slide through the octanorm groove.

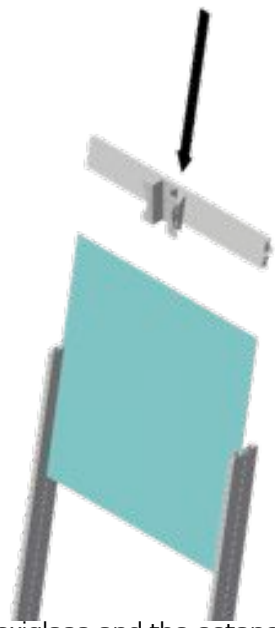
Take the assembled counter and using the hammerheads slide it into the octanorm groove until it rest on the counter base that is resting on the pins. The hammerhead goes through the inside of the counter and is secure with a bolt as seen above.



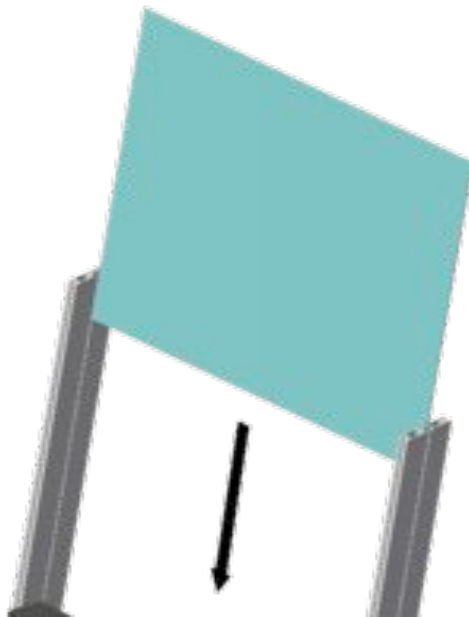
Place the standoff on the counter and using a cap secure to the counter base. The standoff in the front will screw into the top of the base, but there is no cap for the front. The counter rest on the standoff. Take the counter and the other cap and slide it in between the octanorm use the hammerheads on the side of the counter to slide in the octanorm groove. Use the cap to keep secure.



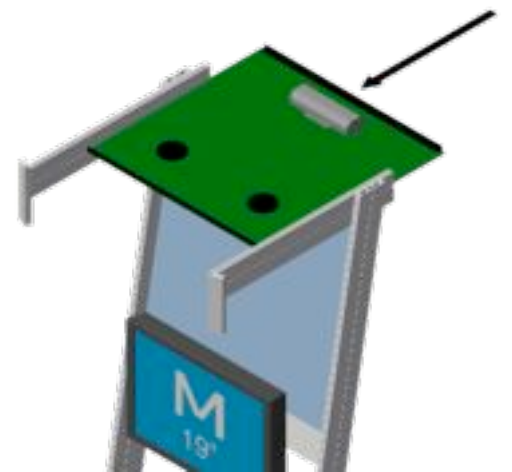
Place the top section of the octanorm into the bottom section of the octanorm. Use hardware that is provided.



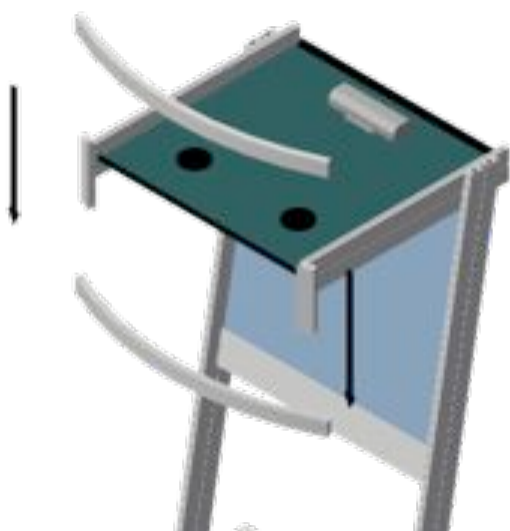
Slide the plexiglass and the octanorm with the monitor bracket attach in between the octanorm uprights. Once the octanorm is goes into the plexiglass lock in place using the tools provided.



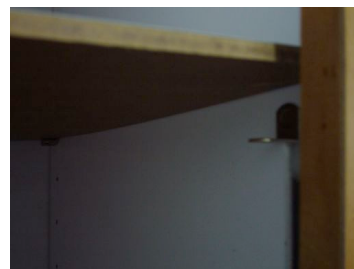
Slide the plexiglass in between the octanorm using the groove of the octanorm as a guide.



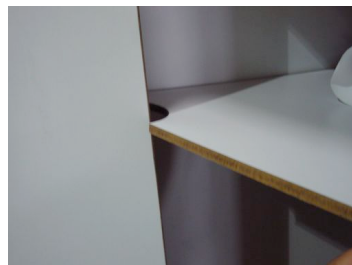
Slide the ceiling in between the octanorm using the groove of the octanorm as a guide.



Assembled the header by putting the pieces by placing the last two pieces together as seen above. Lock using the green tool provided.



Shelf supports attached to the counter base.



Notch facing towards the door.

Using the shelf support on the side of the counter base place the inner shelf and let it rest on the shelf support. Make sure that the notch on the shelf is facing the towards the door.



Assembled kiosk.