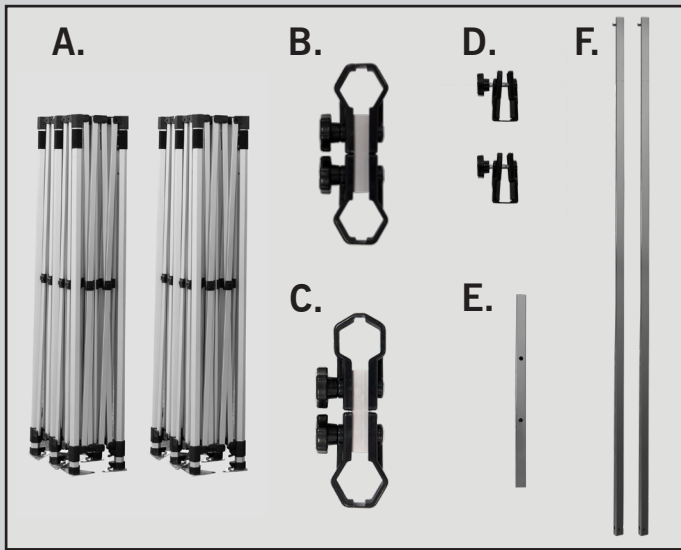


ADVERTISING TENT PLUS 20X20

Assembly Instructions | R1.092418

ASSEMBLY HARDWARE



- A. (2) 10x20 Frames
- B. (2) Flat-Flat Clamps
- C. (4) Pointed-Flat Clamps
- D. (2) Support Bar Clamps
- E. Middle Support Pole
- F. (2) Support Poles



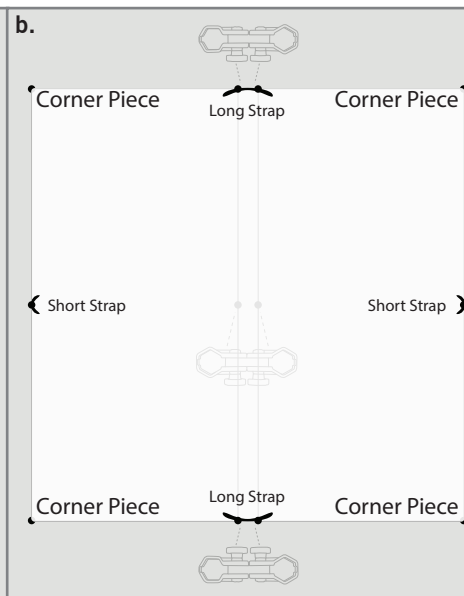
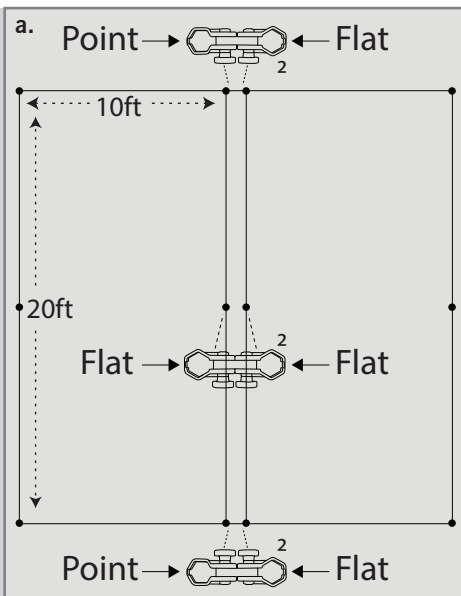
ASSEMBLY



NOTE: Six or more people are required for assembly.

1. Set the two 10x20 frames down on a clean, dry surface.
2. Expand both tent frames so they are about a quarter of the way open. Place the frames next to each other along the 20ft side. Ensure the inner legs of both frames are lined up next to each other.

CLAMP AND CANOPY INSTALLATION



3. Using the overhead diagram (a) as a guide, clamp together the three pairs of legs where the two 10x20 tent frames meet. Place one clamp at the bottom of the frame, right above the foot, and the other on the top of the frame, right below the hook adhesive strip.

A. The **Pointed-Flat** clamps connect to the two pairs of outer legs. Make sure the screw knob is facing towards the inside of the tent frame.

B. The **Flat-Flat** clamps connect to the center pair of legs. The screw knob can face either direction.

4. Place the canopy over the frame with the print facing upwards. Match the **Long Strap** with the two pairs of legs, followed by the **Short Strap** with the single legs. **Do not attach the loop straps during this step.** Attach only the **Corner Pieces** of loop adhesive to the tent frame's hook adhesive, located on the corners.

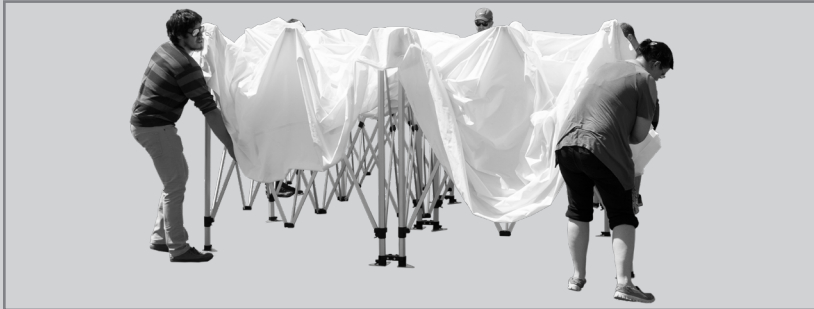
DISCLAIMER: Tents should always be staked down with Premium Tent Stake Kit and weighed down. Tent should be completely deflated before folding it up. Tents should not be used in inclement weather, including thunderstorms, heavy rains, lightening, and high winds. No grill or any type of open flame is to be used under or near the tent. User must read and observe assembly instructions. If this is not done correctly, it may result in damage to the unit, injury, or death, and all warranties will be void. All warranties will be void if hardware is used with any print not produced by us. Properly care for prints to keep them in great condition. Prints should never be dragged along the ground or stored without being properly folded and free from moisture. Make sure print is completely dried from any weather, and fold and store in a clean, dry place. We don't recommend storing print on frame.



ADVERTISING TENT PLUS 20X20

Assembly Instructions | R1.082718

EXPANDING, CLAMPING, & FASTENING



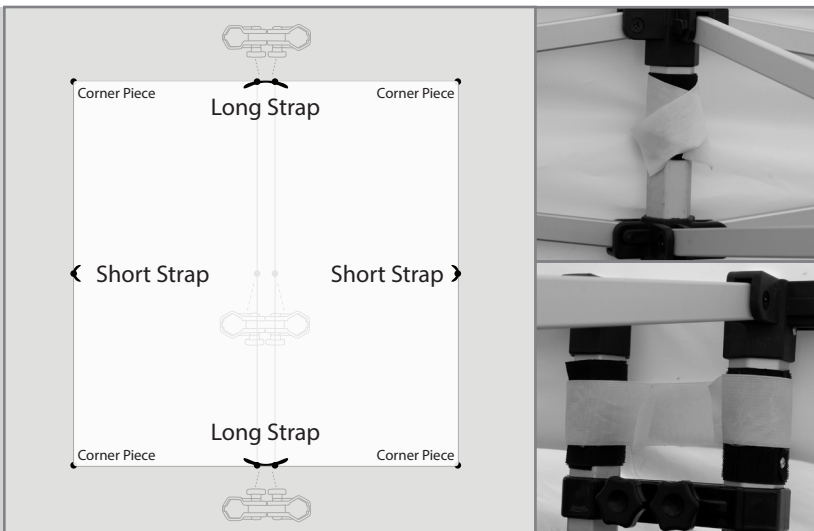
5. Expand the four corners of the tent frame outward.



6. When the frame is almost done expanding, push the sliding leg brackets up towards the top of the frame.



7. Continue pushing the sliding brackets up toward the top of the frame until they lock into place. There may be some resistance due to the tension of both tent frames being connected. The leg bracket will lock into place once it is fully connected. Ensure that all twelve tent leg brackets lock into place.



8. Connect the **Long & Short Straps** to the tent frame. Attach the **Short Strap** loop fastener to the single legs. Attach the **Long Strap** loop fastener to the pairs of legs.

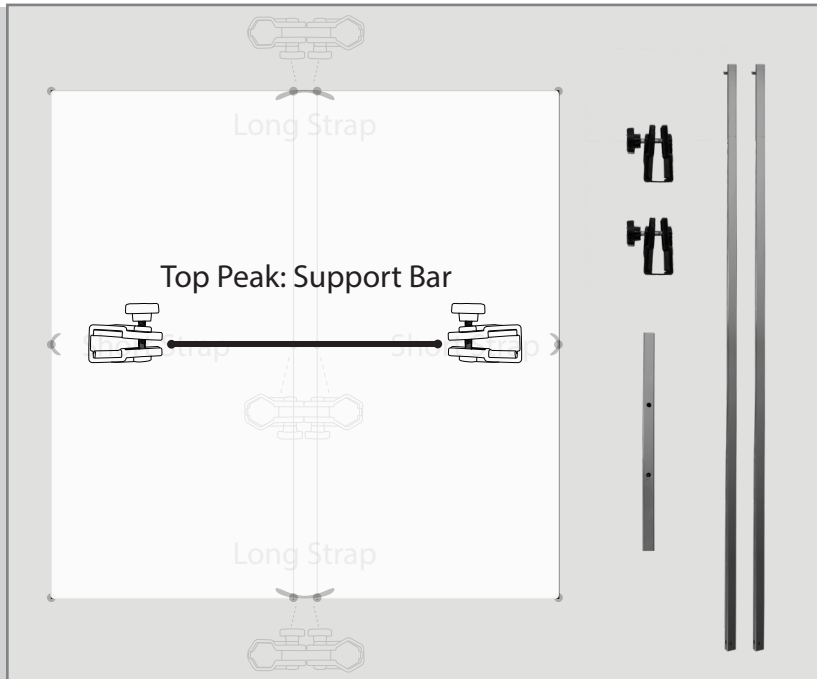
DISCLAIMER: Tents should always be staked down with Premium Tent Stake Kit and weighed down. Tent should be completely deflated before folding it up. Tents should not be used in inclement weather, including thunderstorms, heavy rains, lightening, and high winds. No grill or any type of open flame is to be used under or near the tent. User must read and observe assembly instructions. If this is not done correctly, it may result in damage to the unit, injury, or death, and all warranties will be void. All warranties will be void if hardware is used with any print not produced by us. Properly care for prints to keep them in great condition. Prints should never be dragged along the ground or stored without being properly folded and free from moisture. Make sure print is completely dried from any weather, and fold and store in a clean, dry place. We don't recommend storing print on frame.



ADVERTISING TENT PLUS 20X20

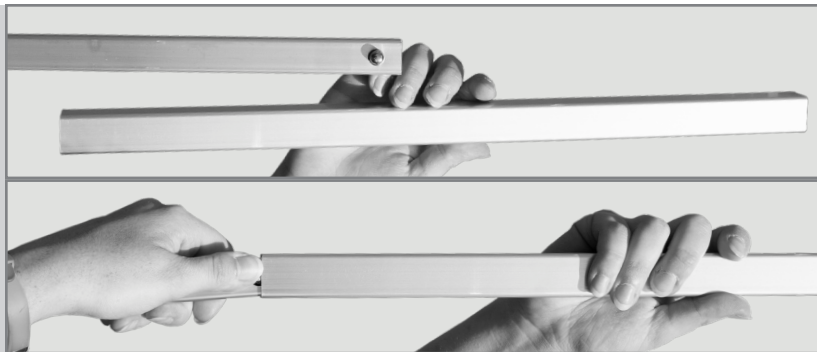
Assembly Instructions | R1.082718

TOP PEAK BAR INSTALLATION



NOTE: Two step ladders are required for steps 11-12.

To give support to the peak of your canopy use the Top Peak Support Bar: 2 clamps, 2 long bars, 1 short bar.



9. Before assembling the support bar, make sure the short pole is turned on its side so the long poles' buttons do not snap into the holes on the short pole.

10. Glide the poles together to form one long pole.



11. Place a clamp around the peak post as high as possible. Insert the support bar and tighten the clamp with the tightening screw. With help, have someone hold up the opposite end of the support bar.

12. When the first clamp is secured, repeat the process for the opposite side.



13. Once the Top Peak Support Bar is fully assembled, adjust the tent legs to the desired height. Make sure the locking clips snap into place. Standing on the tent foot makes this step easier.

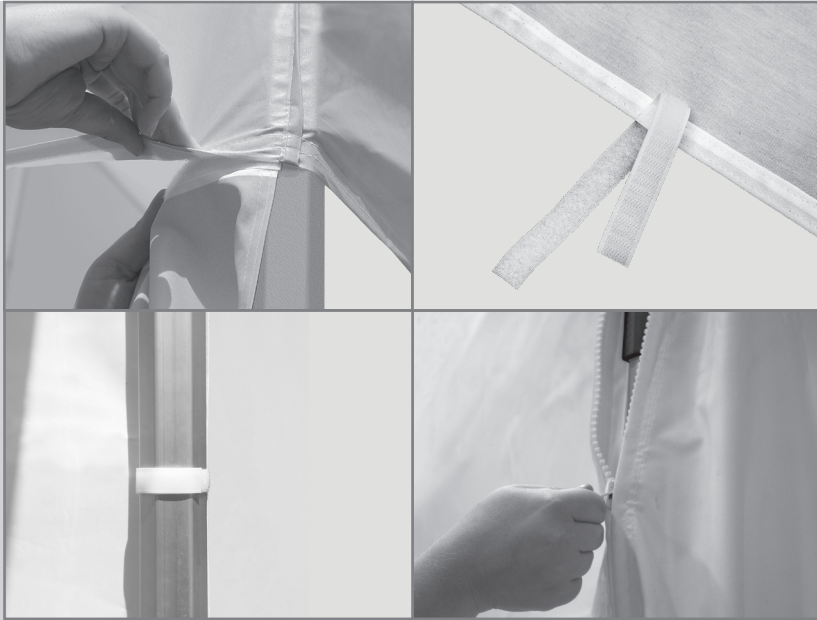
DISCLAIMER: Tents should always be staked down with Premium Tent Stake Kit and weighed down. Tent should be completely deflated before folding it up. Tents should not be used in inclement weather, including thunderstorms, heavy rains, lightening, and high winds. No grill or any type of open flame is to be used under or near the tent. User must read and observe assembly instructions. If this is not done correctly, it may result in damage to the unit, injury, or death, and all warranties will be void. All warranties will be void if hardware is used with any print not produced by us. Properly care for prints to keep them in great condition. Prints should never be dragged along the ground or stored without being properly folded and free from moisture. Make sure print is completely dried from any weather, and fold and store in a clean, dry place. We don't recommend storing print on frame.



ADVERTISING TENT PLUS 20X20

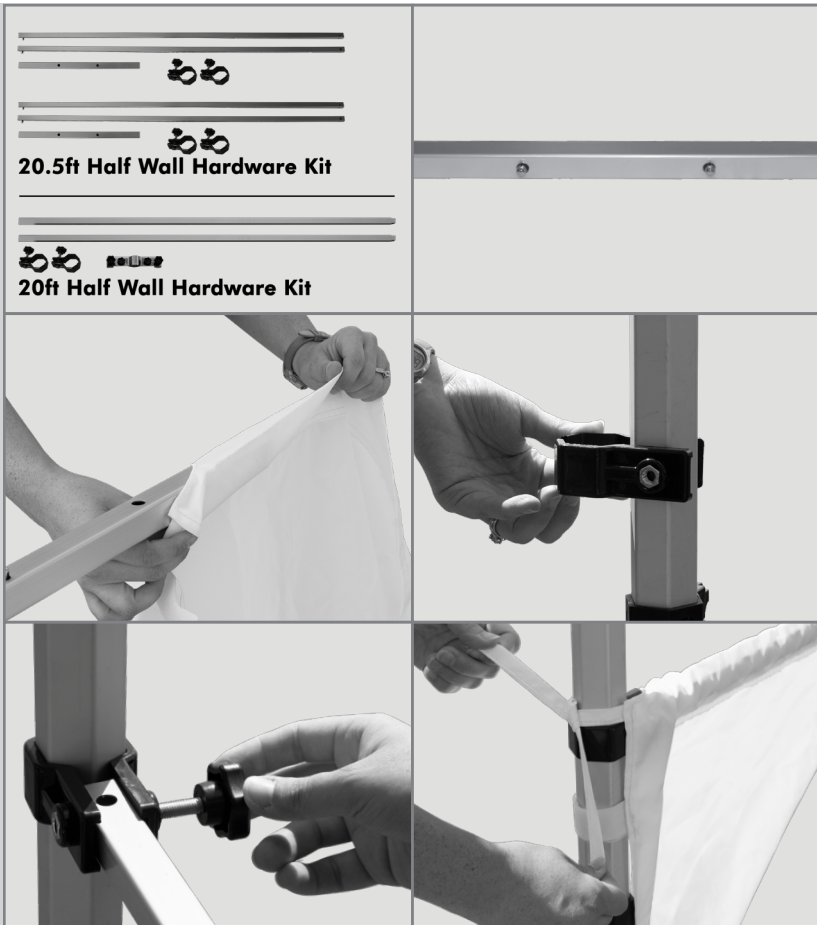
Assembly Instructions | R1.082718

ATTACHING FULL WALLS



1. When adding tent wall(s), the legs of the frame must be at their maximum extension height. Attach the wall's loop fastener to the hook fastener on the bottom tent valance.
2. Secure the sides of the wall by wrapping the hook-and-loop tabs around the tent legs.
3. If the tent wall features zippers, walls can be connected by closing the zipper from bottom to the top.

ATTACHING HALF WALLS



NOTE: If attaching two or more half walls, you must stagger the height of the adjoining half walls or use a 90° corner clamp.

1. Slide one support pole with the click button into the center support pole. Once the button snaps through the first hole, repeat this step with the second pole.
2. Slide the half wall support bar through the print's pole sleeve. The support bar should go through the entire pole sleeve, with both ends of the pole sticking out from either end of the half wall.
3. Attach the half wall clamps to the tent legs. Unscrew the knobs completely from the clamps and slip the clamps around the tent legs.
4. Place the appropriate end of the half wall support bar through the opening of the clamp. Place the tightening knob into the open holes and hand tighten the knob. Repeat this step with the second clamp and support pole.
5. Secure the hook-and-loop fastener tabs of the half wall around the tent legs. On stock walls only, tie the half walls around the tent legs.

*****For the 20ft side, there is a 180° center connector included in the hardware set, which will allow for even wall installation.*****

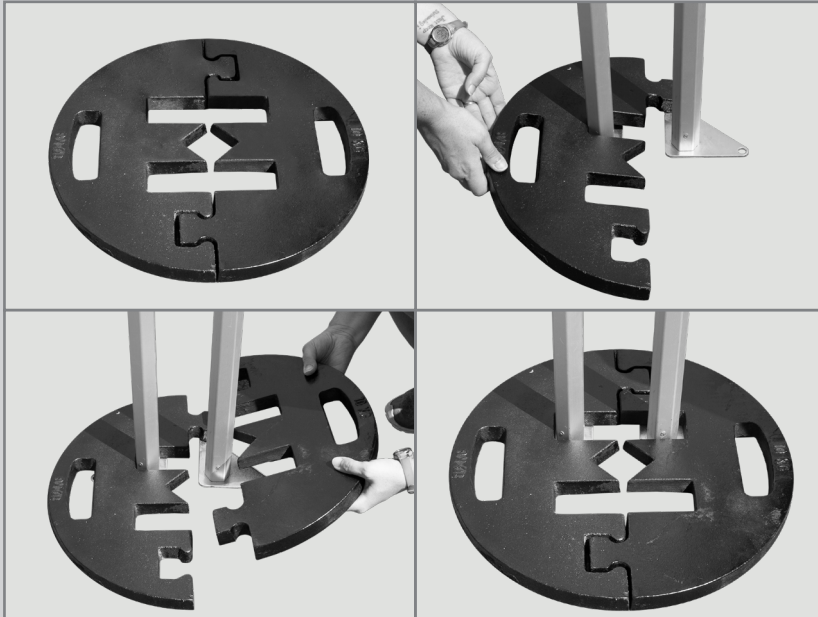
DISCLAIMER: Tents should always be staked down with Premium Tent Stake Kit and weighed down. Tent should be completely deflated before folding it up. Tents should not be used in inclement weather, including thunderstorms, heavy rains, lightening, and high winds. No grill or any type of open flame is to be used under or near the tent. User must read and observe assembly instructions. If this is not done correctly, it may result in damage to the unit, injury, or death, and all warranties will be void. All warranties will be void if hardware is used with any print not produced by us. Properly care for prints to keep them in great condition. Prints should never be dragged along the ground or stored without being properly folded and free from moisture. Make sure print is completely dried from any weather, and fold and store in a clean, dry place. We don't recommend storing print on frame.



ADVERTISING TENT PLUS 20X20

Assembly Instructions | R1.082718

BASE PLATE INSTALLATION



1. Ensure you have both halves of the base plate.
2. Slide one of the half-rectangle cutouts of the base plate over one of the tent legs.
3. Slide the other base plate with the half-rectangle cutout over the second tent leg.
4. Make sure the two base plate halves are locked together.

*****For corners with one tent leg only, place the tent leg into the center, square cutout.*****

DISCLAIMER: Tents should always be staked down with Premium Tent Stake Kit and weighed down. Tent should be completely deflated before folding it up. Tents should not be used in inclement weather, including thunderstorms, heavy rains, lightening, and high winds. No grill or any type of open flame is to be used under or near the tent. User must read and observe assembly instructions. If this is not done correctly, it may result in damage to the unit, injury, or death, and all warranties will be void. All warranties will be void if hardware is used with any print not produced by us. Properly care for prints to keep them in great condition. Prints should never be dragged along the ground or stored without being properly folded and free from moisture. Make sure print is completely dried from any weather, and fold and store in a clean, dry place. We don't recommend storing print on frame.

