

Tilting Base Set-up

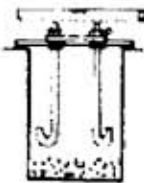
These instructions assume normally packed soil. In case of lightly packed, sandy, humid, or other conditions where concrete block could potentially shift, increase the hole size to create a wider base for greater stability.



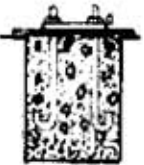
1
Dig a hole in the ground according to measurements indicated in **Drawing A**.



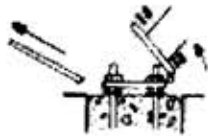
2
Secure anchor rods to base plate using nuts (3) and (4). **Set-up according to measurement M** (see Drawing B) and install hinge plate above hole in the ground on top of a cross bar to maintain plate at proper level. Position hinge part of the tilting base toward the side where the flagpole will be tilted. Ensure that enough space is available when tilting flagpole to the ground.



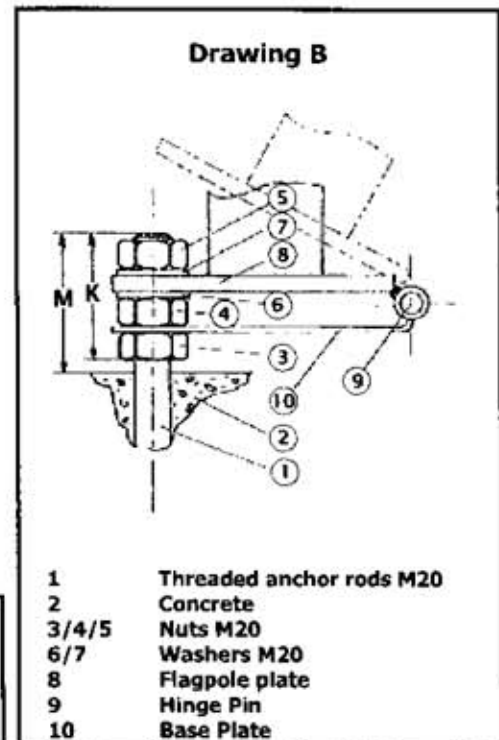
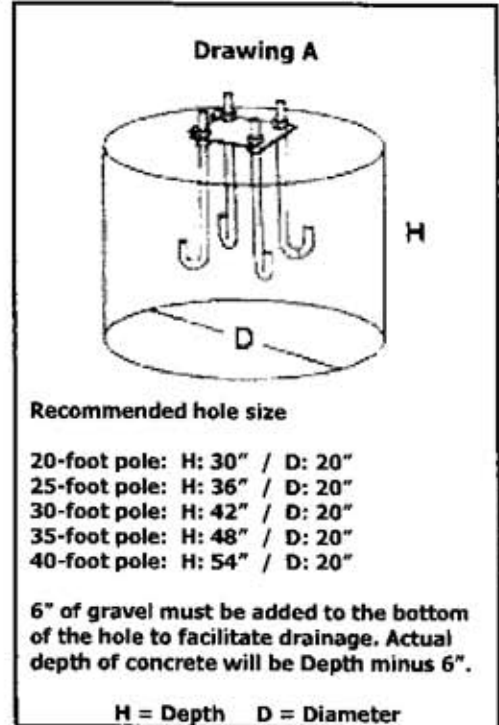
3
Fill hole with concrete up to a level below the lower nuts (3) and ensure correct positioning of the plate.
Drying time varies with weather and cement type. Allow one day for quick setting concrete and a full week for standard concrete.



4
Once concrete is hard, remove crossbar, keep nuts (3), (4), and washers (6) in place. Washers (7) and nuts (5) will be used later to secure flagpole in vertical position.



5
Connect flagpole's plate to base plate using hinge pin (9). Lift flagpole vertically, fit washers (7) and nuts (5) on anchor rods. Check that flagpole is vertical; if not, adjust position by raising/lowering nuts (3/4/5), then tighten nuts (5)



M = Distance between concrete level and top of anchor rods
 = 3.1/4"
K = Distance between bottom of nut (3) and top of anchor rod
 = 2.3/4"