

Front Load Frame

292010, 292020, 191110, 292015, 292025, 292011, 292021, 191111, 292016, 292026, 292012, 292022, 191112, 292017, 292027, 292013, 292023, 191113
7F1117*, 7F1722, 7F2228, 7F2436

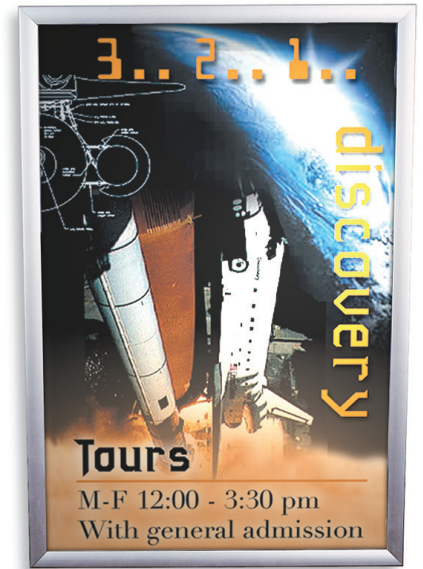
Product Specifications

Colors: Black, Silver

*Available in Black Only

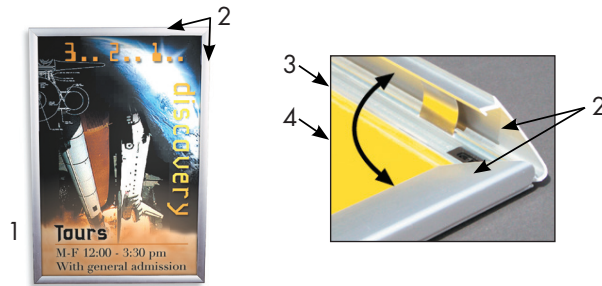
Graphic Templates Available

SKU	Graphic Size	Frame Dimensions
7F1117*, 292010, 292020, 191110	11" x 17"	12.75" W x 18.75" H x .5" D
7F1722, 292015, 292025, 292011, 292021, 191111	17" x 22"	18.5" W x 24" H x .5" D
7F2228, 292016, 292026, 292012, 292022, 191112	22" x 28"	23" W x 29.5" H x .5" D
7F2436, 292017, 292027, 292013, 292023, 191113	24" x 36"	25.5" W x 37.5" H x .5" D



Product Parts

- 1 - Frame
- 2 - Snap Edge
- 3 - Graphic Edge
- 4 - Protective Graphic Film



Display Set-Up

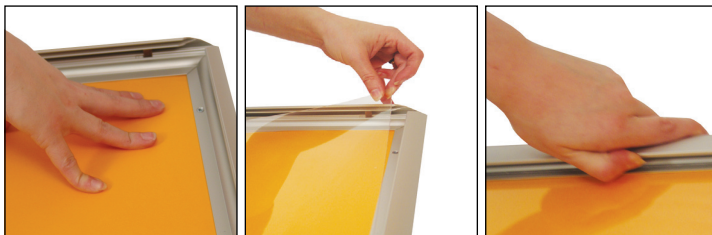
Step 1

Take all parts out of the box.

Lay the Frame (1) on a clean, flat surface.

Step 3

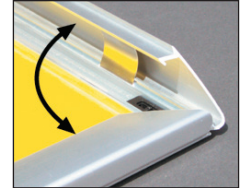
Lay the Graphic evenly between the Graphics Edges (3). Place the Protective Graphic Film (4) on top of the Graphic. Close all 4 Snap Edges (2).



Step 2

Open all 4 Snap Edges (2).

Remove the Protective Graphic Film (4) and peel off the protective sheeting on the Protective Graphic Film (4).



Step 4

Attach Wall Mounting Hardware (not included) to the back of the Frame (1). Hang the Frame on the wall as desired.



Storage

Place all product parts into Carry Case and store in a cool dry location.

Care

To clean, wipe with damp cloth.

Warranty Information: All products are designed to provide the user with a cost-effective and durable product. Standard warranty is a 'one year parts and labor' warranty which warrants product against defects in material and workmanship. It does not cover damage due to accidents, abuse, or normal wear and tear. Products found to be defective will be replaced or repaired at factory's discretion.