

Frame Assembly

SET UP INSTRUCTIONS:

- 1. CONNECT RAILS FOLLOWING THE LABELS
- 2. CLEAN THE FRAME AND PLACE THEM ON CLEAN PLACE
- 3. CAREFULLY REMOVE FABRIC COVER FROM BAG
- 4. PLACE COVER AROUND THE BOTTOM OF THE FRAME
- 5. PULL COVER CAREFULLY UP TO THE TOP MAKING SURE HOLES ARE ALIGNED WITH EYEBOLTS
- 6. CLOSE ALL ZIPPERS
- 7. ADJUST FABRIC AROUND THE FRAME
- 8. CONNECT EYEBOLTS TO THE FRAME
- 9. CONNECT CABLE HARNESS TO THE EYEBOLTS
- 10. COMPLETELY TIGHTEN THREADED CONNECTORS

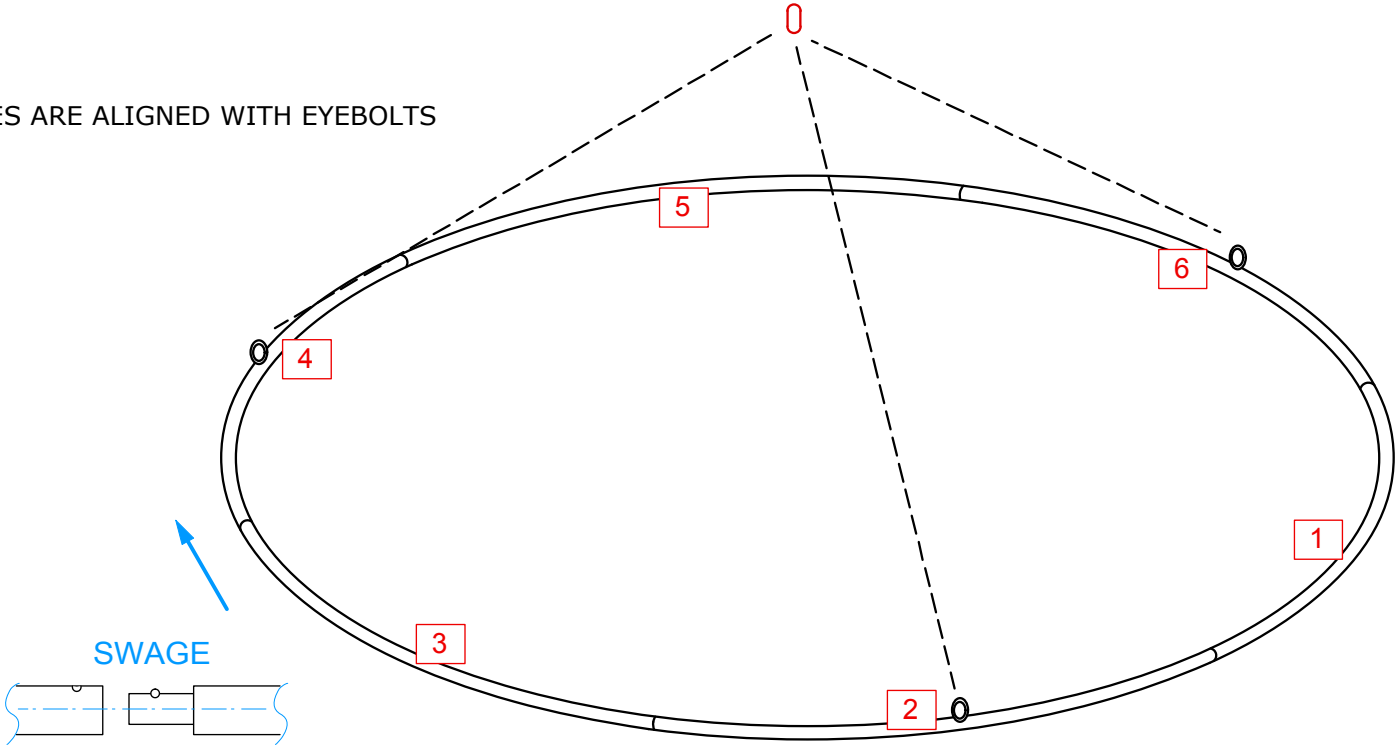
BREAK DOWN INSTRUCTIONS:

REVERSE SET-UP STEPS TO BREAKDOWN FRAME

FABRIC CARE INSTRUCTIONS:

- 1. UNZIP COVER ZIPPERS
- 2. CAREFULLY REMOVE FABRIC COVER
- 3. CLOSE ALL ZIPPERS
- 4. FOLD OR ROLL NEATLY
- 5. PLACE FABRIC IN COVER BAG

Assemble frame as shown
*Curves with eyebolts used every other section



Frame parts

