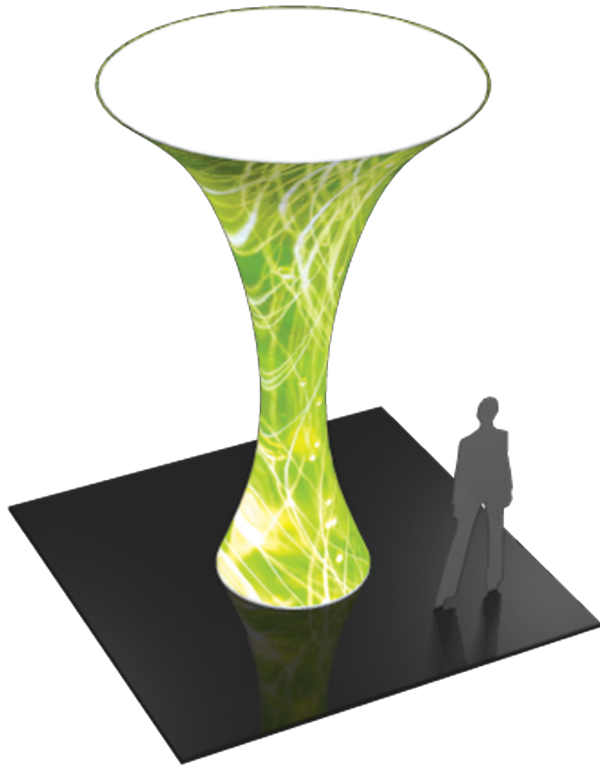


# Formulate 12' Funnel

## FUN-03

Formulate™ Funnels transform any environment through form, fabric and lighting. Funnels feature a heavy-duty, wooden base and silver powder coated truss interior to create a dynamic, towering structure that commands attention. Fabric graphics feature a zipper at the top and a silicone edge at the bottom for easy assembly. Accent LED light kits are not included, but can be purchased a la carte to add a glow within the funnel structures.



## features and benefits:

- State-of-the-art 30mm curved aluminum tube frame with expanding spigots
- Easy to store and ship
- Quick to set up
- Kit includes: one frame, one dye-sublimated zipper pillowcase graphic, and one wheeled molded OCH2 storage case (base packs separately).
- Lifetime hardware warranty against manufacturer defects

## dimensions:

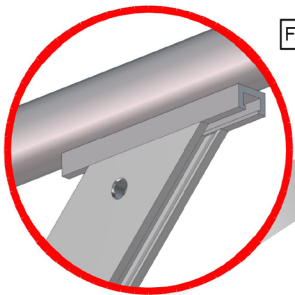
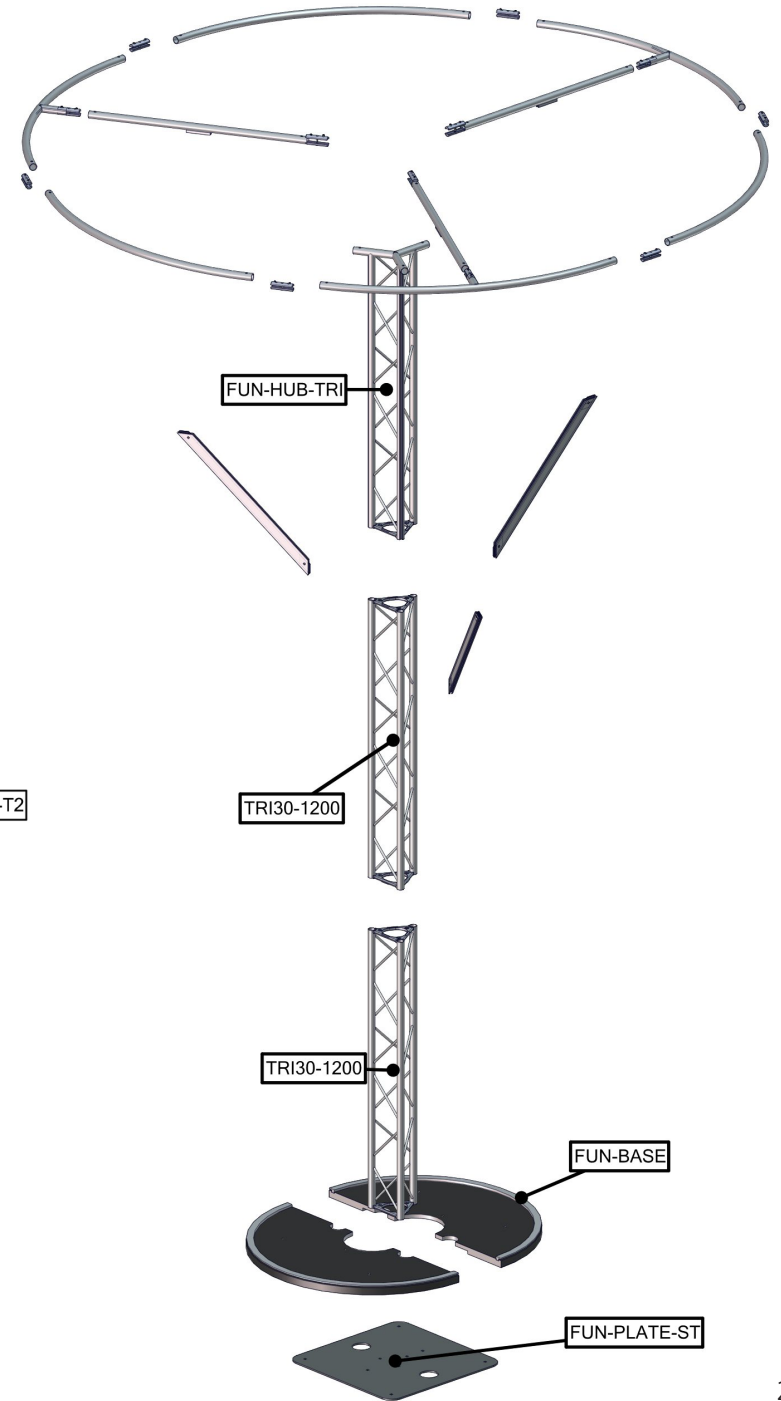
Hardware	Graphic
<p>Assembled unit: 140.974" h x 42" dia.(base) x 98.5" dia.(top) 3581mm(h) x 1067mm(dia) x 2502mm(dia)</p> <p>Approximate weight (includes graphic): 96.3 lbs / 43.68 kg</p>	<p>Total visual area: 94.67" w x 155" h, three prints 2405mm(w) x 3937mm(h)</p> <p>Please be sure to include 5" bleed around the perimeter.</p> <p>Refer to related graphic template for more information.</p>
<p>Shipping</p> <p>Shipping dimensions: One OCH2 case: 52" l x 30" w x 15" h 1321mm(l) x 762mm(w) x 381mm(h)</p> <p>Approximate shipping weight (with cases): 126 lbs / 57 kg</p>	

## additional information:

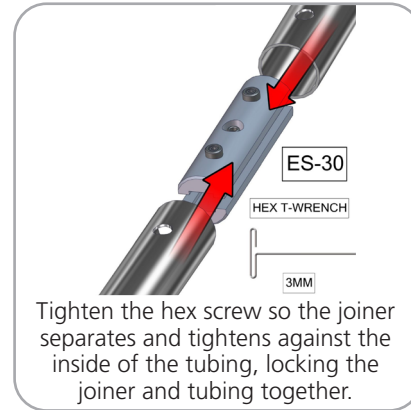
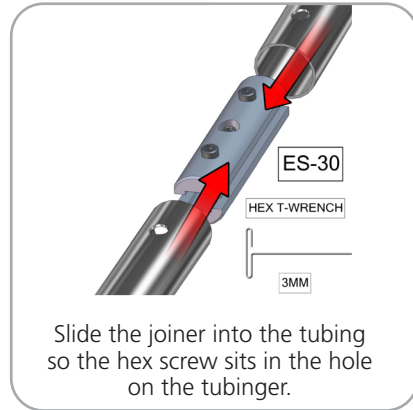
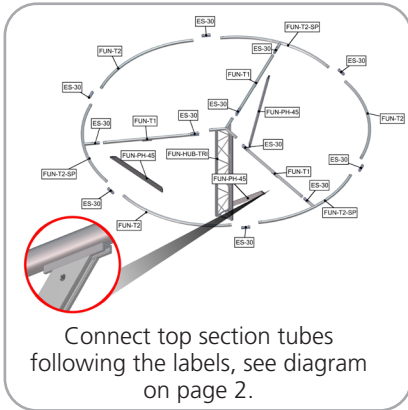
Graphic material:  
dye-sublimated zipper pillowcase graphic with opaque liner

## Parts Included

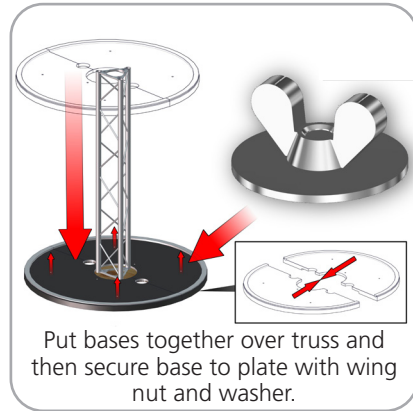
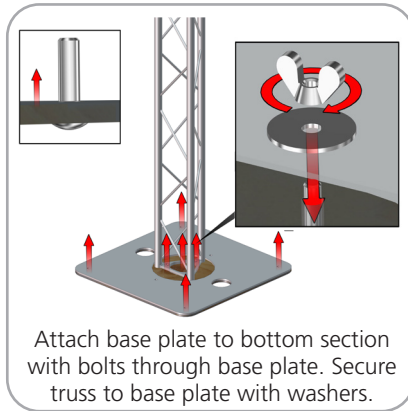
Part Label	Qty	Part Code
EXPANDING SPIGOT FOR 30MM TUBE	x12	ES-30
(2) PCS BASE WITH FC RING	x1	FUN-BASE
24" X 24" X 1/4" STEEL BASE PLATE	x2	FUN-PLATE-ST
775MM PH 45 DEG. LOCKS BOTH ENDS	x3	FUN-PH-45
30MM X 916MM SPREADER TUBE WITH PE	x3	FUN-T1
30MM X 5' CURVED TUBE WITH SPREADER	x3	FUN-T2-SP
30MM X 5' CURVED TUBE	x3	FUN-T2
1200MM LENGTH OF TRILOCK TRUSS HUB WITH CHANNELS	x1	FUN-HUB-TRI
1200MM LENGTH OF TRILOK TRUSS	x2	TRI30-1200



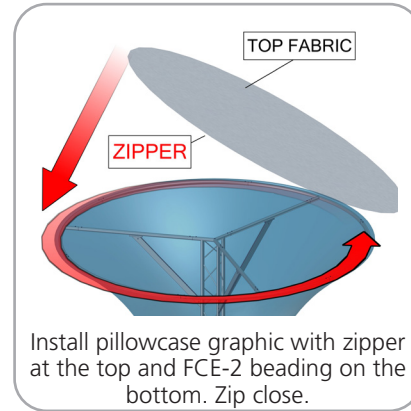
## STEP 1: ASSEMBLE FRAME



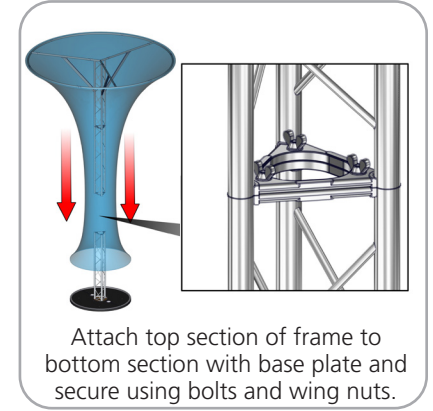
## STEP 2: ATTACH BASE



## STEP 3: ATTACH GRAPHIC



## STEP 4: ATTACH TRUSS



## STEP 5: ATTACH GRAPHIC

