

All templates are at 1:10 scale.

Please delete the templates not used.

# Bowflag® 100 XXS BF060

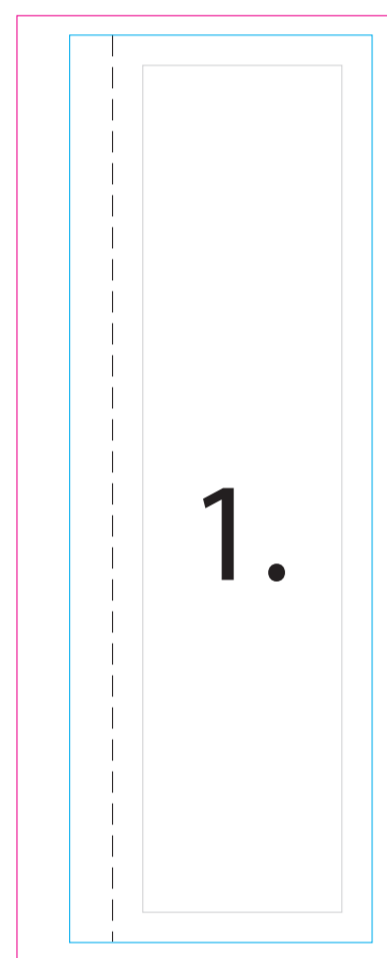
1. Rectangle
2. Concave
3. Convex
4. Angled
5. Straight
6. Drop

— = Text/Image Safety Line

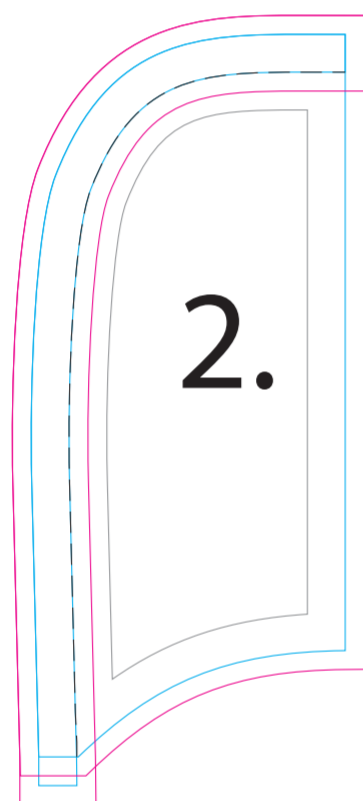
— = Bleed Line

— = Finished Size

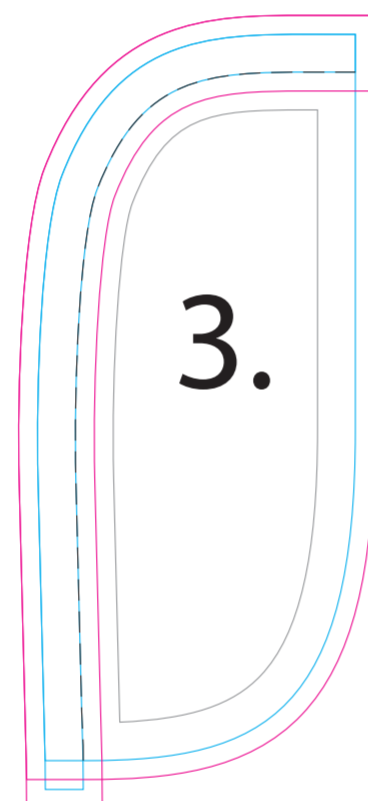
----- = Stitching Line



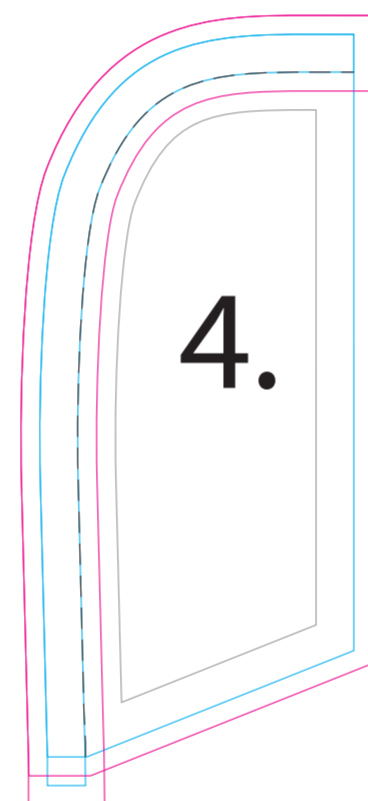
1.



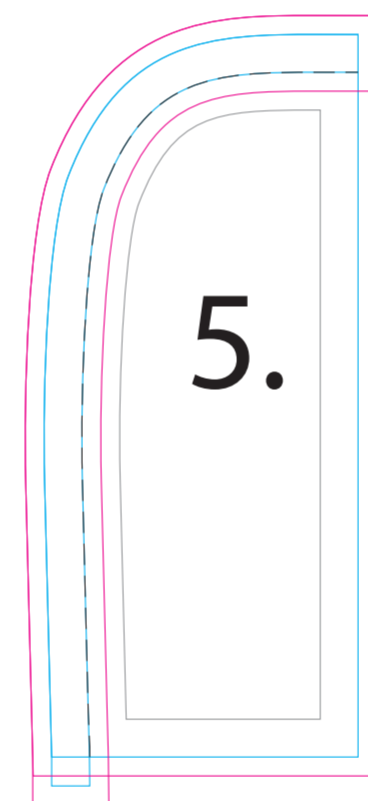
2.



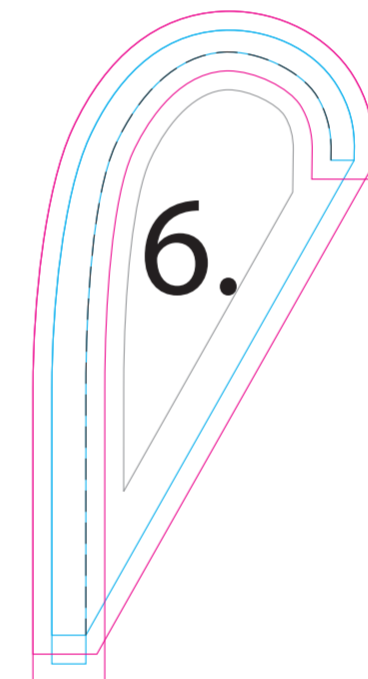
3.



4.



5.



6.

Rectangle  
1.3ft (40cm) x 3.9ft (120cm)

Flying Shapes  
1.3ft (40cm) x 3.1ft (95cm)

Drop  
1.3ft (40cm) x 2.6ft (80cm)

All artwork needs to be:

- Images: 360 dpi @ 1:10 ratio
- Text: completely vectorized
- CMYK color mode
- Spot colors (PANTONE) defined
- Appropriate bleed



Due to the inability to accurately reproduce some PANTONE® colors with CMYK inks, please reference a PANTONE® Color Bridge® book. This will provide a process color simulation for you to review.