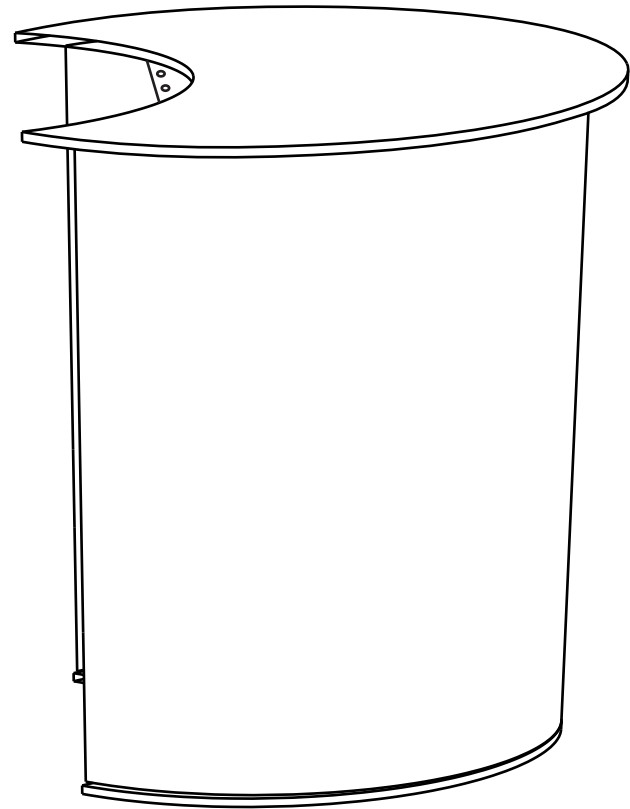
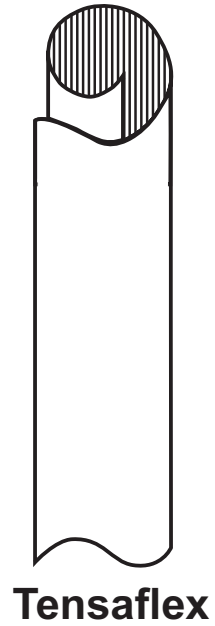
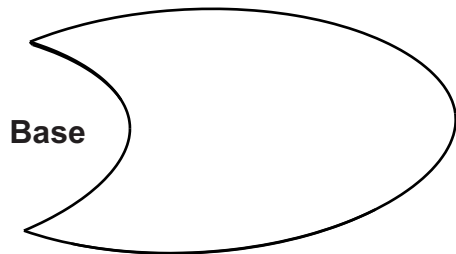
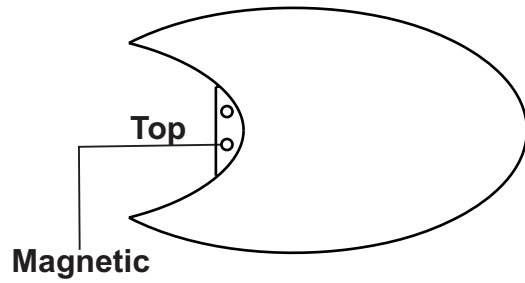


SOLO EVOLUTION WING

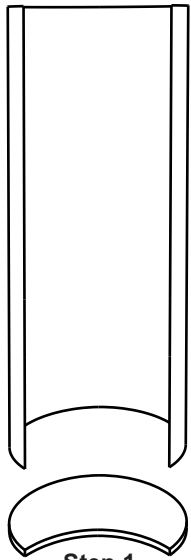
Extensor



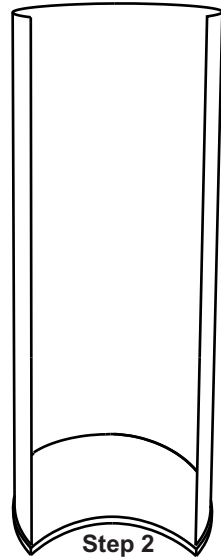
Parts

SOLO EVOLUTION WING

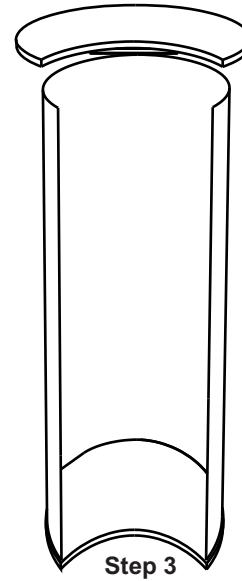
Extensor



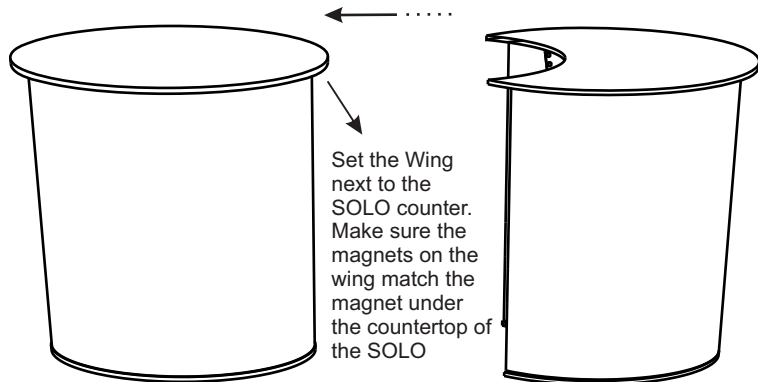
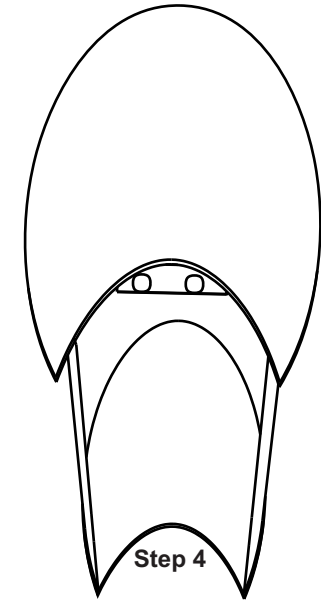
Place the base on the floor and spread the Tensaflex



Pair the Tensaflex with the hook and loop base

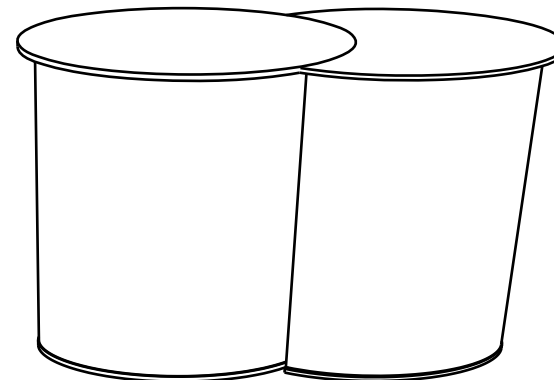


Set the top base on the Tensaflex and push it down and make sure it is tight



Step 5

Put the SOLO and the extensor together.



Assembly