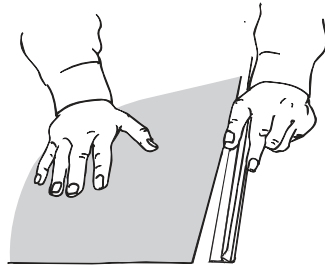
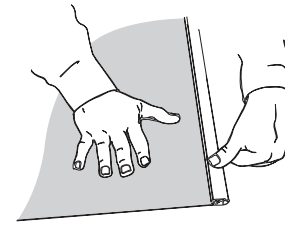


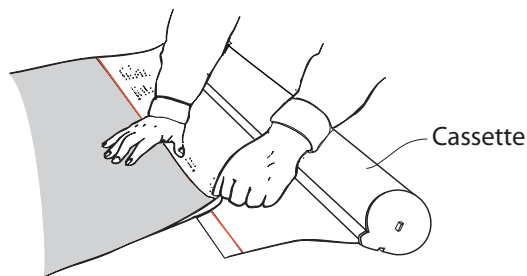
Graphic Installation QuickScreen 3



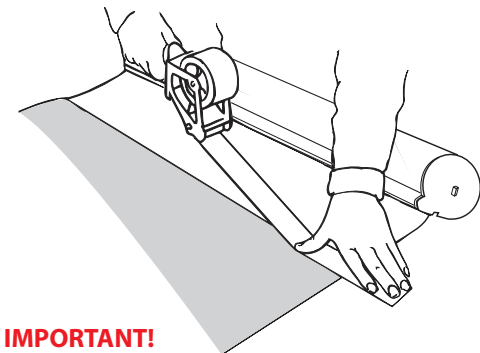
1. Open the snap top profile and insert the image.
(Top profile with adhesive can also be used).



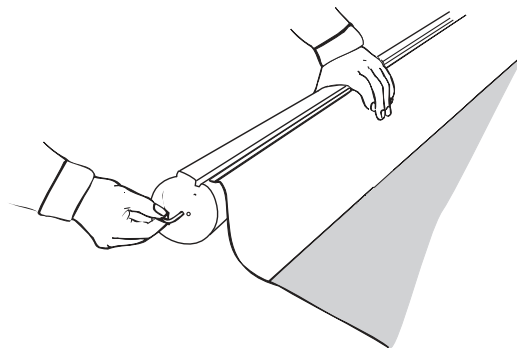
2. Press down and secure the image to the snap top profile.
Snap from the sides and into the middle.



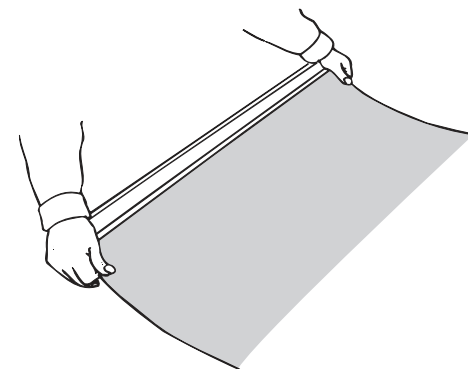
3. Remove the protective film.
Apply the image with picture side upwards and position along the red line.



4. Apply packing tape over the joint.



5. Grip the image and the cassette with the left hand. Remove the locking pin with the right hand.
The mechanism is now activated!



6. Let the image roll carefully into the unit.

**CAMELBACK
DISPLAYS**

Office: 1-877-268-7469
Fax: 281-288-2870
www.camelbackdisplays.com
1922 Willow Wisp Lane • Spring, TX • 77388