

Congratulations on the purchase of your Replacement Graphic Cartridge and Banner.

Owner's Manual

Includes:

Parts List

Assembly Instructions

Care Instructions

Storage Instructions

Warranty Information

Please read all of the information carefully and contact your distributor or supplier with any issues.



Parts List

Important: Before you begin please count and inspect all pieces.

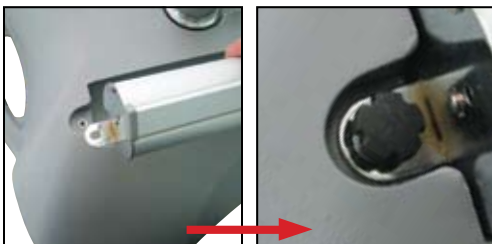
1 - Graphic Cartridge and Banner

Assembly Instructions



Step 1

Unscrew black knobs on both sides of your current graphic cartridge, and remove cartridge from base.



Step 2

Place new graphic cartridge into base, and secure in place with black knobs.

Storage Instructions

Store in a cool, dry place.

Care Instructions

Spot clean with a damp cloth.

Warranty Information

All products are designed to provide the user with a cost-effective and durable product. Standard warranty is a 'one year parts and labor' warranty which warrants product against defects in material and workmanship. It does not cover damage due to accidents, abuse, or normal wear and tear. Products found to be defective will be replaced or repaired at factory's discretion.