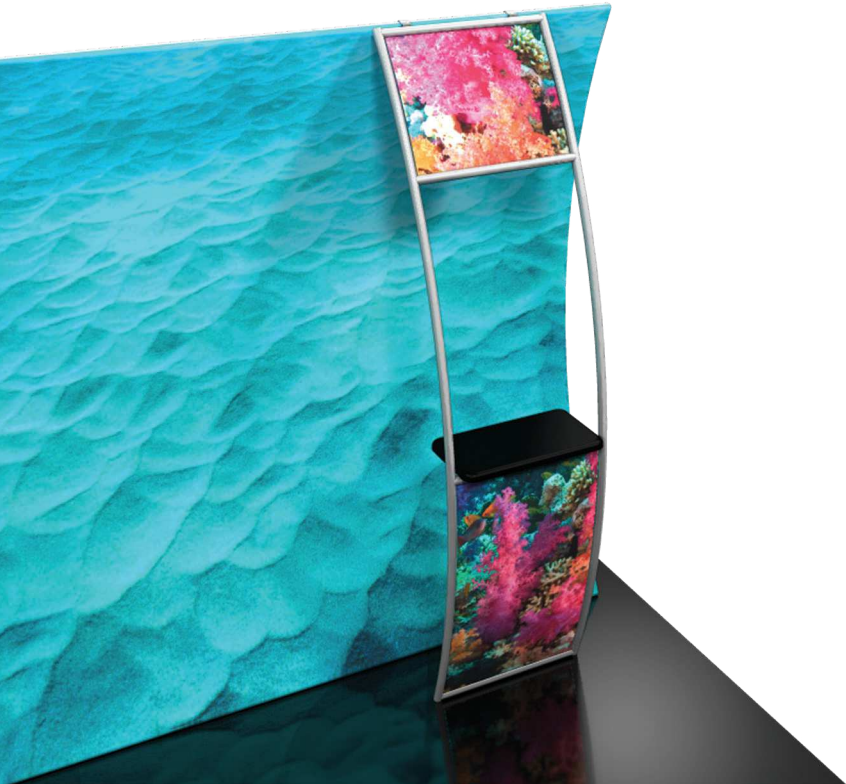


Formulate Accent Counter

FMLT-WLC

Formulate™ accents enhance the functionality of any 10ft or 20ft backwall and add more real estate for messaging too! With monitor supports, literature pockets, shelves, tables, counters and more, you are sure to find the accent that best suits your needs. Right side table and graphic headers also available.



We are continually improving and modifying our product range and reserve the right to vary the specifications without prior notice. All dimensions and weights quoted are approximate and we accept no responsibility for variance. E&OE. See Graphic Templates for graphic bleed specifications.

features and benefits:

- State-of-the-art brushed 30mm aluminum tube frame with snap button assembly
- Features 20" wide counter
- Top and bottom printed infill panels
- Kit includes: one frame, two panel graphics, counter, and one wheeled molded OCH storage case
- Lifetime hardware warranty against manufacturer defects

dimensions:

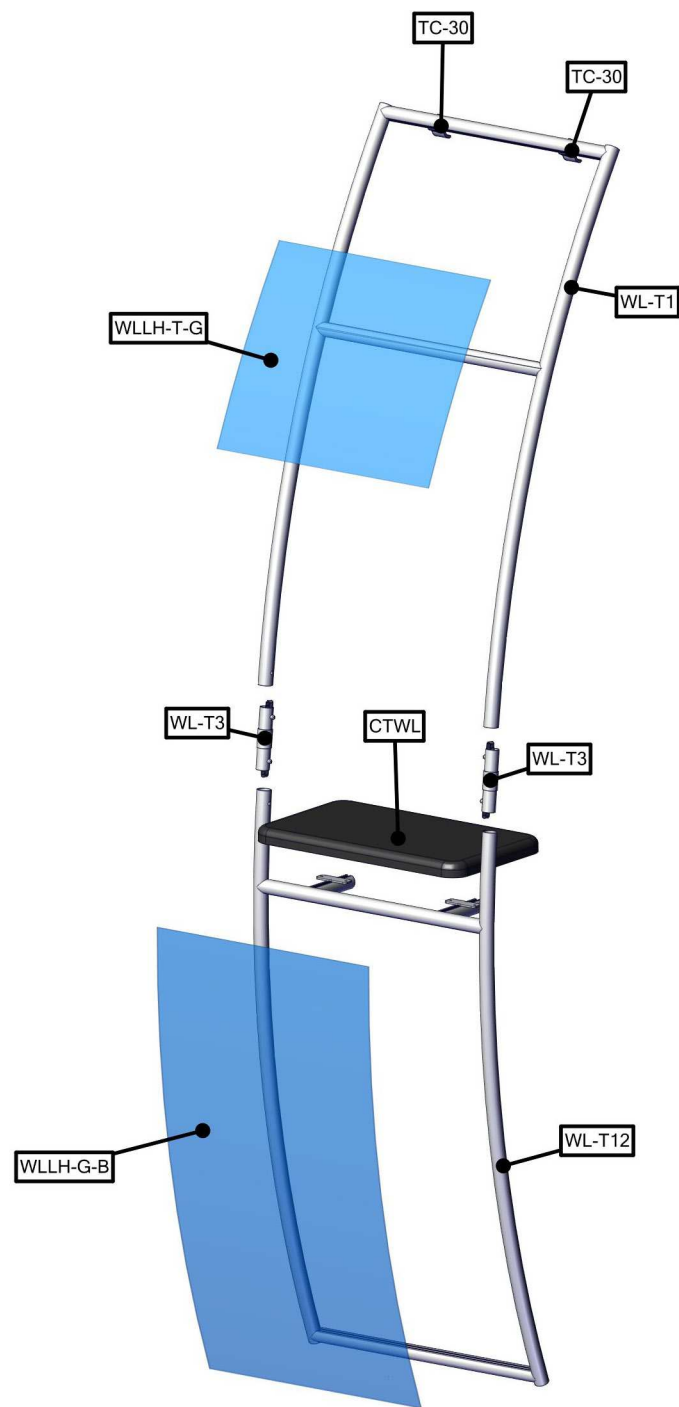
| Hardware | Graphic |
|--|--|
| Assembled unit: 23.6"w x 92.7"h x 21.2"d 668mm(w) x 2355mm(h) x 538mm(d) | Total visual area: Top: 21" w x 17.5" h Bottom: 21" w x 38.6875" h |
| Counter dimensions: 20.47" w x 11.81" d | Please be sure to include 1/2" bleed around the perimeter. |
| Approximate weight (includes graphics): 21 lbs / 9.5 kg | Refer to related graphic template for more information. |
| Shipping | |
| Shipping dimensions: One OCH case: 50"l x 29"w x 12"h | |
| Approximate shipping weight (with case): 51 lbs / 23 kg | |

additional information:

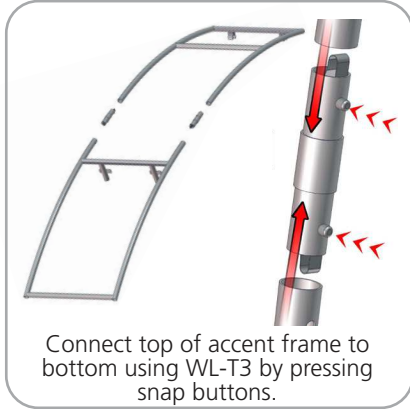
| | |
|---|--|
| Graphic material: 3mm / 6mm white pvc | |
| Counter holds max 10 lbs / 4.5 kg | |
| Table colors: | |
| <div><div>silver</div><div>black</div><div>mahogany</div><div>natural</div></div> | |

Parts Included

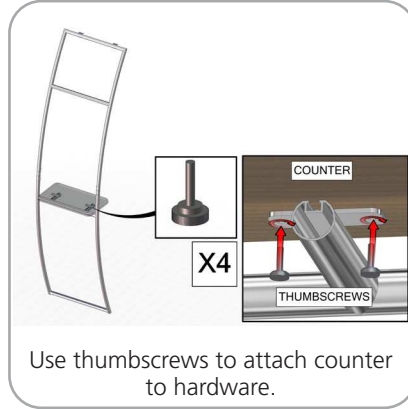
| Part Label | Qty | Part Code |
|---------------------------------------|-----|-----------|
| 520 X 300 X 30 COUNTER | x1 | CTWL03 |
| SILVER ANOXIZE FINISH 30MM TUBE CLAMP | x2 | TC-30 |
| 30MM TUBE SECTION | x2 | WL-T3 |
| 30MM TUBE SECTION | x1 | WL-T12 |
| 30MM TUBE SECTION | x1 | WL-T1 |
| TOP SINTRA GRAPHIC | x1 | WLLH-T-G |
| BOTTOM SINTRA GRAPHIC | x1 | WLLH-G-B |



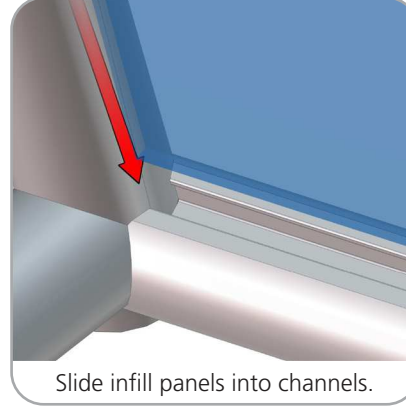
STEP 1: ASSEMBLE FRAME



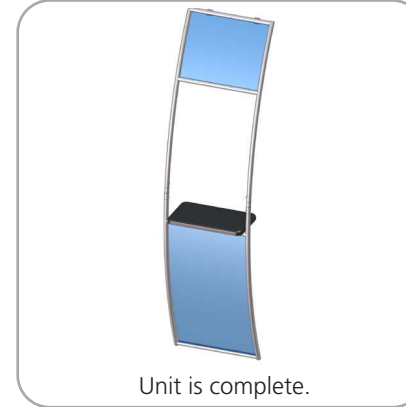
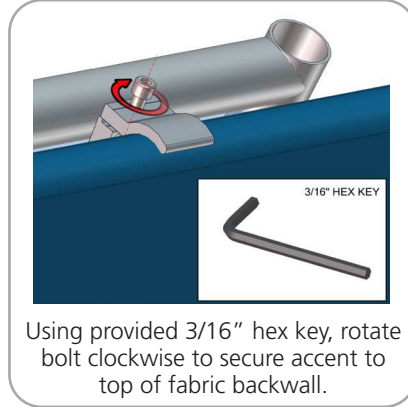
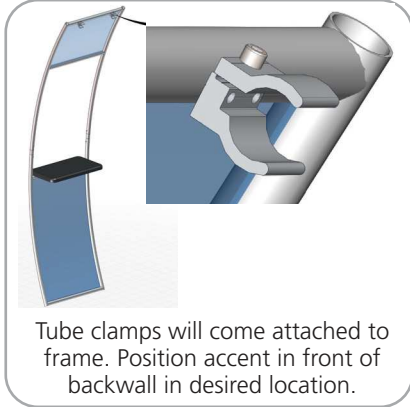
STEP 2: ATTACH COUNTER



STEP 3: ATTACH GRAPHICS

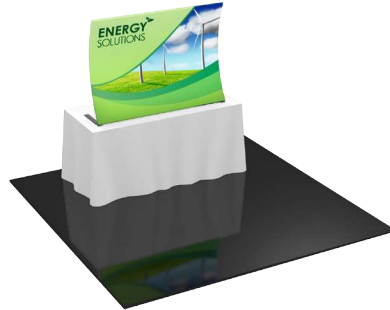


STEP 4: ATTACH TO BACKWALL WITH CLAMPS



Check out these related products:

The Formulate line is a collection of stylish, ergonomically designed tabletop, 8ft, 10ft, 20ft exhibits, hanging structures, and display accessories. Formulate combines state-of-the-art zipper pillowcase dye-sublimated fabric coverings with a premium lightweight aluminum structure. Formulate is efficient, easy to assemble and disassemble, and offers remarkable style options and choices.



Formulate Tabletops



Formulate 8ft Kits



Formulate 10ft Kits
(Horizontal Curve)



Formulate 10ft Kits
(Vertical Curve)



Formulate 10ft Kits
(Straight)



Formulate 20ft Kits



Formulate Hanging Structures