

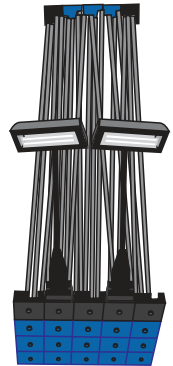
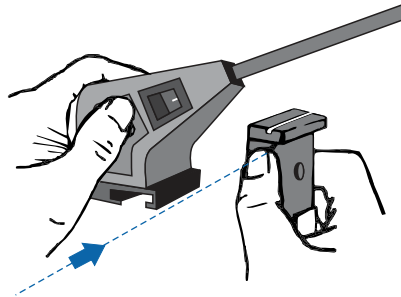
Contents of Case



- Frame
 - Channel Bars in Bag
 - Center Panels
 - Endcaps
 - Halogen Light(s)
 - Emergency Repair Kit
 - Fabric or Graphic Case Wrap*
- *Not always included

Installing Lights

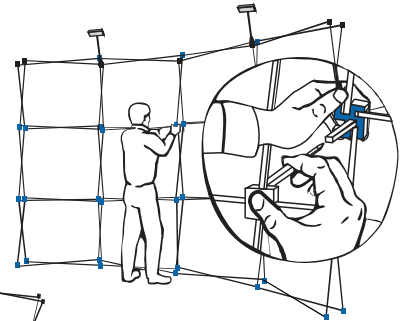
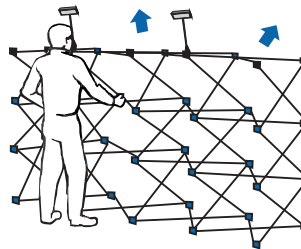
Position frame in front of you with the Black hubs at the top, and facing you.



STEP 1

Expanding the Frame

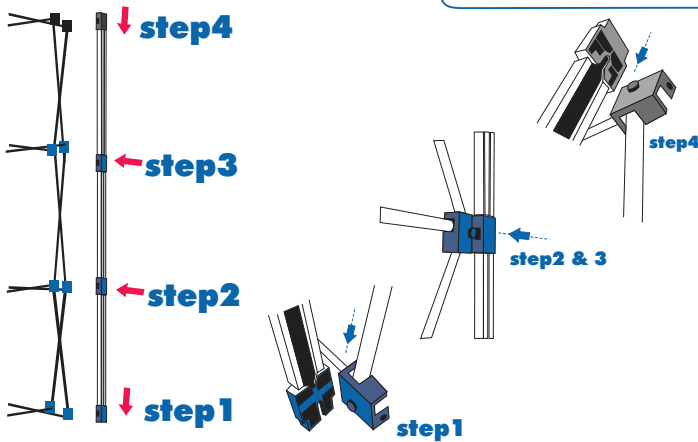
Pull the frame upwards extending in all directions.



Lock ALL the connectors

STEP 2

Channel Bars

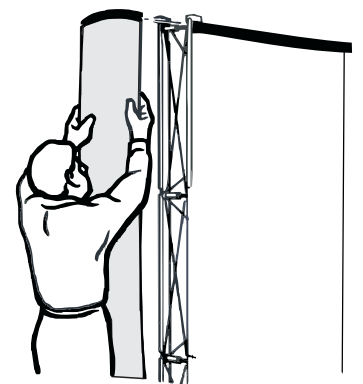
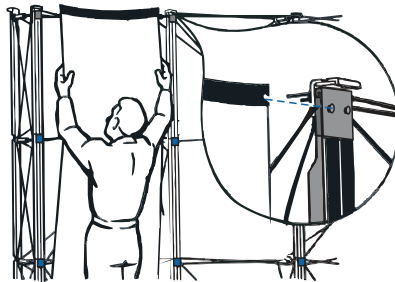


STEP 3

Attaching Panels

Attach panels in order, left to right or right to left, and finish with the end caps.

It may be necessary to adjust panels for improved alignment.



STEP 4