

All templates are at 1:10 scale.

Please delete the templates not used.

All templates are at 1:10 scale.

Please delete the templates not used.

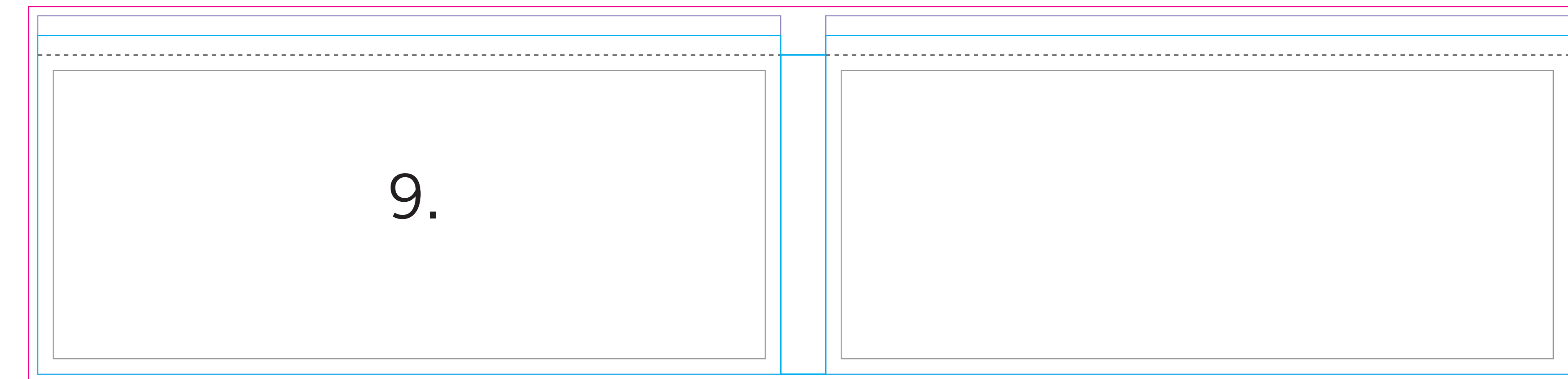
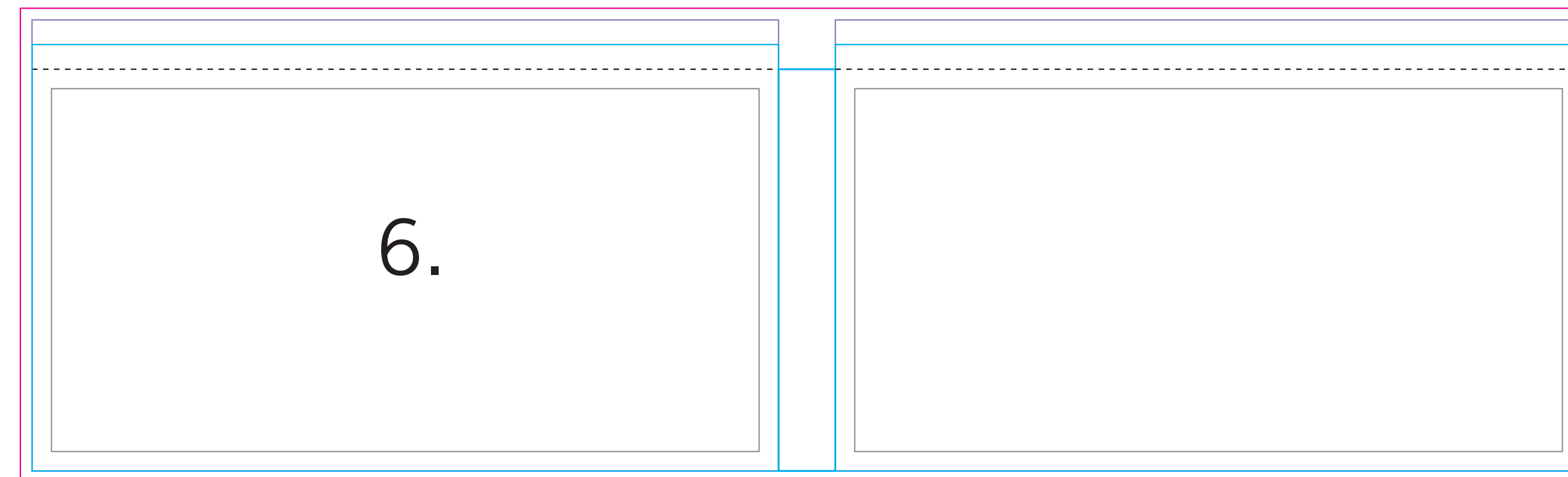
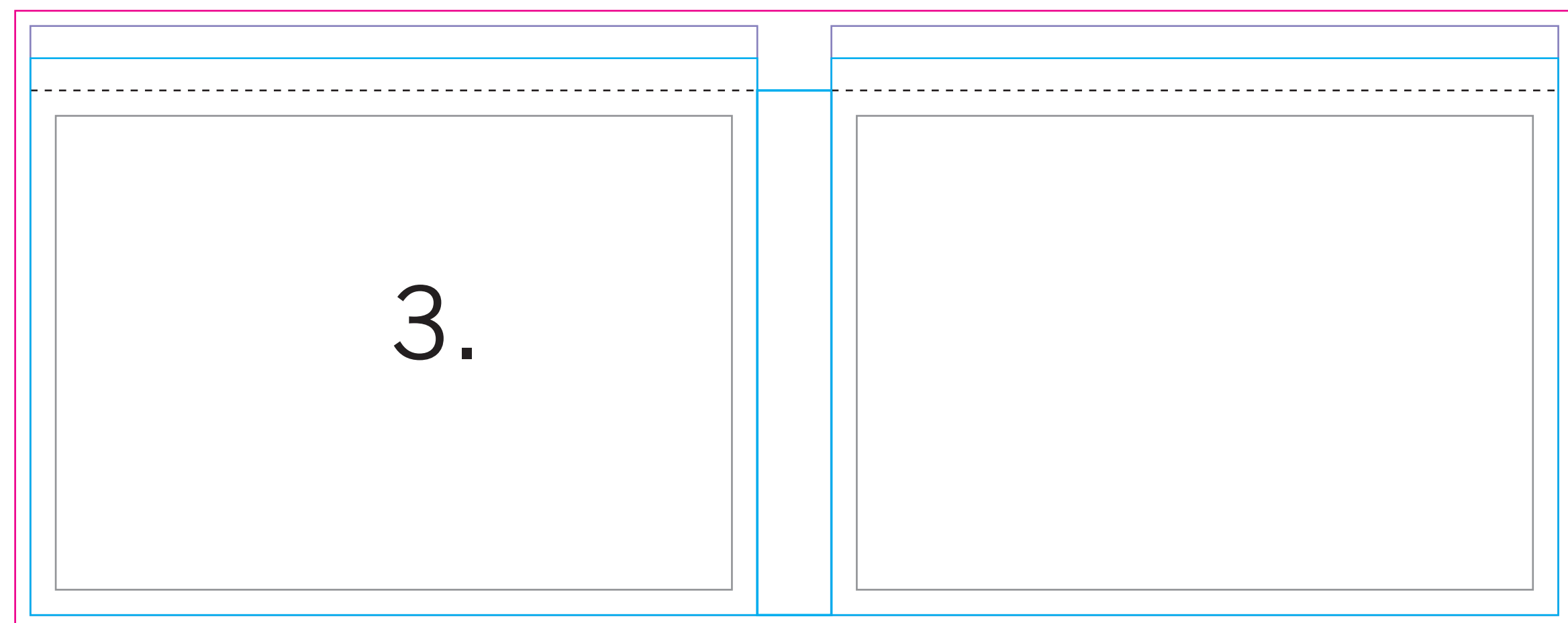
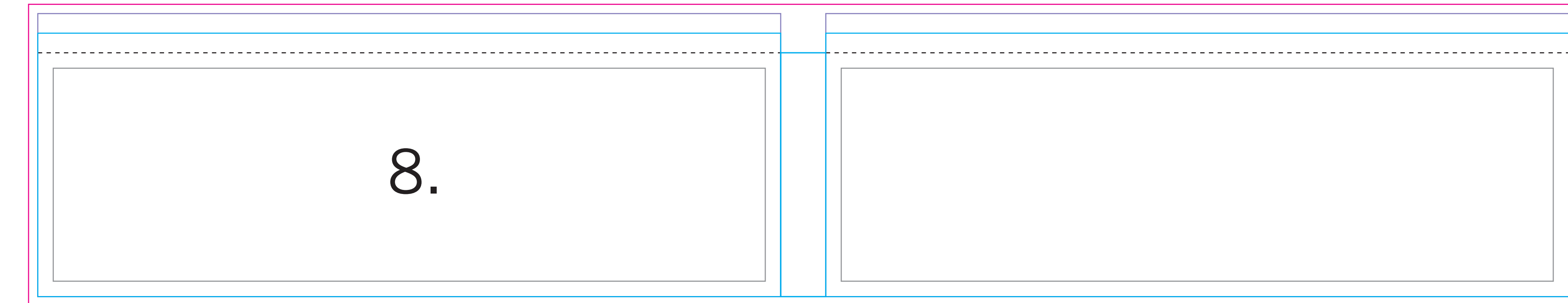
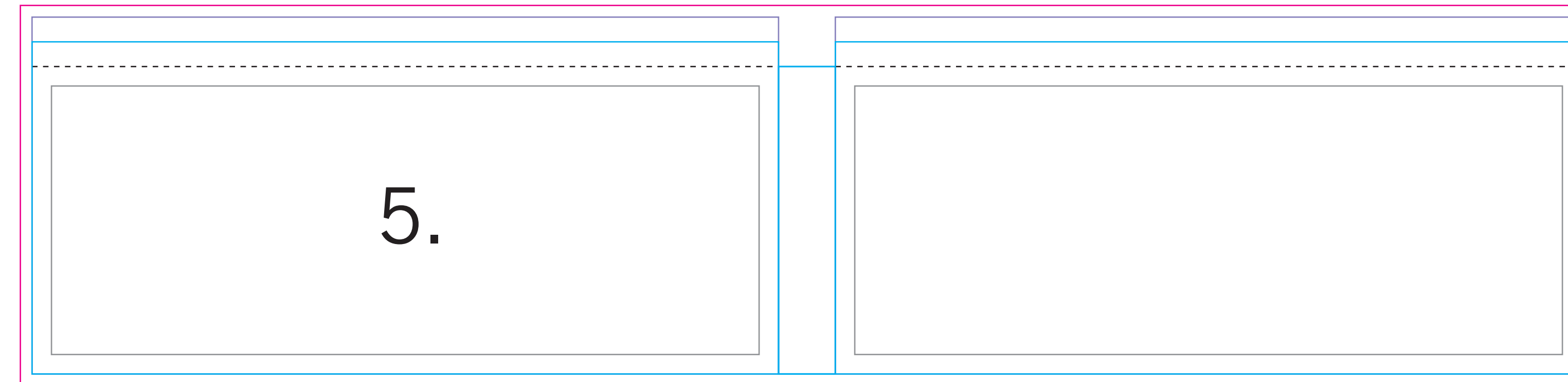
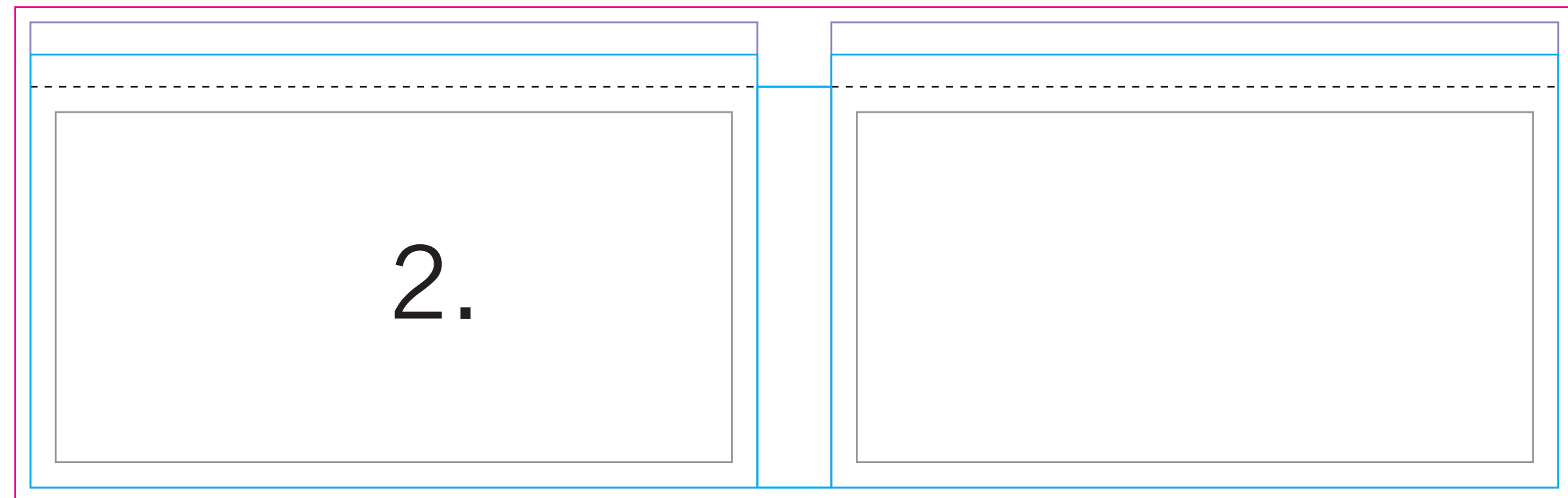
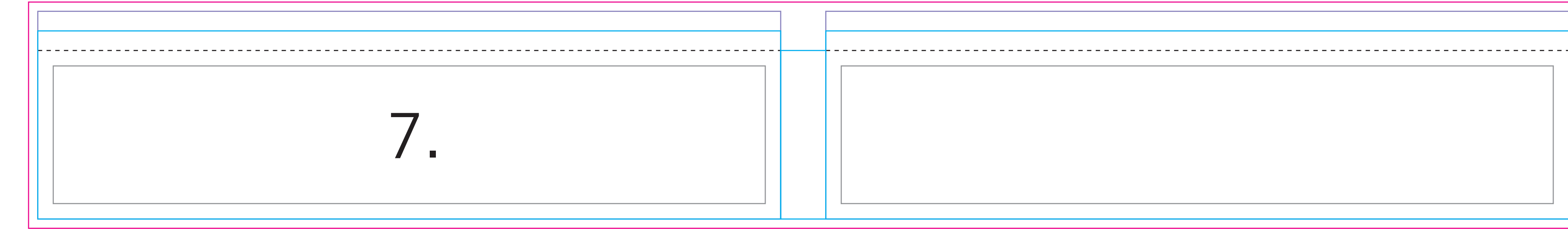
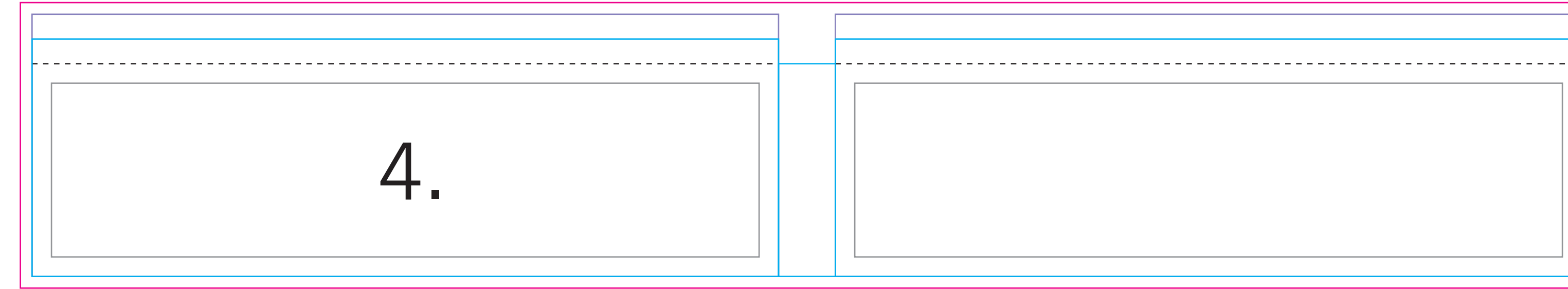
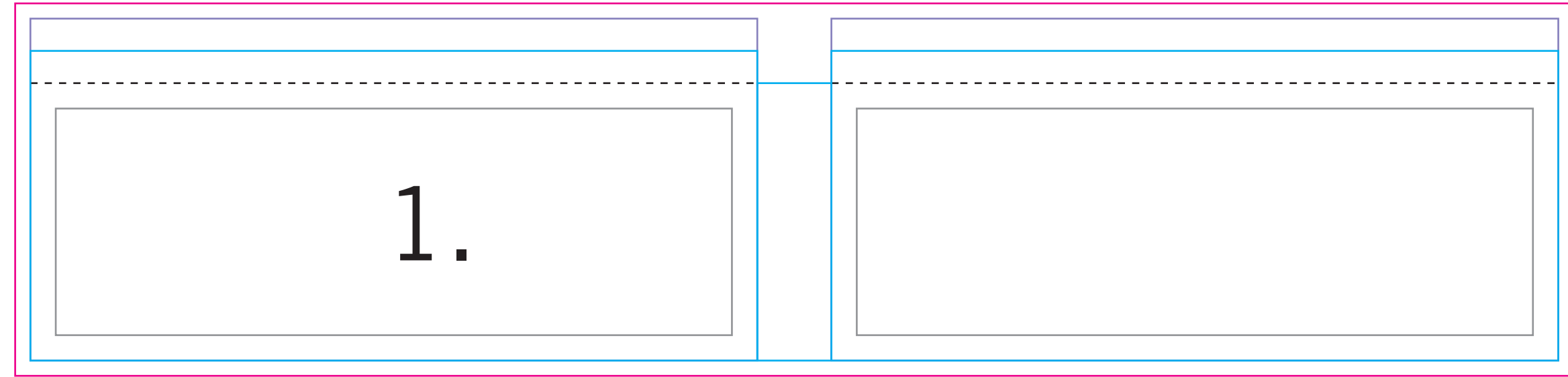
All templates are at 1:10 scale.

Please delete the templates not used.

All templates are at 1:10 scale.

Please delete the templates not used.

# Barrier System BS200 Continuous Print S/R



- 1. 9.9ft (302cm) x 2.0ft (60cm)
- 2. 9.9ft (302cm) x 2.8ft (85cm)
- 3. 9.9ft (303cm) x 3.6ft (110cm)

- 4. 13ft (396cm) x 2.0ft (60cm)
- 5. 13ft (396cm) x 2.8ft (85cm)
- 6. 13ft (396cm) x 3.6ft (110cm)

- 7. 16.3ft (497cm) x 2.0ft (60cm)
- 8. 16.3ft (497cm) x 2.8ft (85cm)
- 9. 16.3ft (497cm) x 3.6ft (110cm)

- = Text / Image Safety Line
- = Bleed Line
- = Finished Size
- = Pole Sleeve Line
- = Stitching Line

- All artwork needs to be:
- Images: 360 dpi @ 1:10 ratio
  - Text: completely vectorized
  - CMYK color mode
  - Spot colors (PANTONE) defined
  - Appropriate bleed